

Annual Weather Summary over Thailand in 2016

In 2016, the majority of Thailand was warmest and much wetter than usual. Annual rainfall averaged over the country of 1,718.1 mm was 130.4 mm (8%) above the 1981-2010 normal while annual mean temperature of 28.0 °C, about 1 °C above normal, was the warmest year in Thailand on 66 years record same as 1998. The mean temperature was above normal for all months especially April and May which was 2.2 and 1.8 °C above normal, respectively. The maximum temperature reached the new highest record in several areas. Moreover rainfall of Thailand were affected by 6 tropical cyclones with 2 tropical cyclones hit Thailand when they were depressions namely the tropical storm “Rai (1615)” that moved into Ubon Ratchathani and Amnat Charoen provinces on 13 September and the tropical storm “Aere (1619)” that moved into Mukdahan and Nakhon Phanom provinces on 14 October. Besides, rainfall in Thailand was increasing by the indirect affected of the tropical depression in middle Vietnam in late June, the tropical storm “MIRENAE (1603)” in late July, the tropical storm “DIANMU (1608)” in middle August and the tropical depression in Cambodia in early November.

The monthly rainfall during January, June, July, September, October and December was above the 1981-2010 normal especially during January and December, which was 34.1mm (201%) and 53.7 mm (111 %) above normal over the whole areas, respectively. By the way, Thailand was drier than usual during February to May and November especially in March and April which was 39.1 mm (79%) and 56.7 mm (64%) below normal rainfall over Thailand, respectively. The maximum daily rainfall in this year occurred in lately winter season of the year was 330.5 mm at Hua Sai in Nakhon Si Thammarat province on December 2.

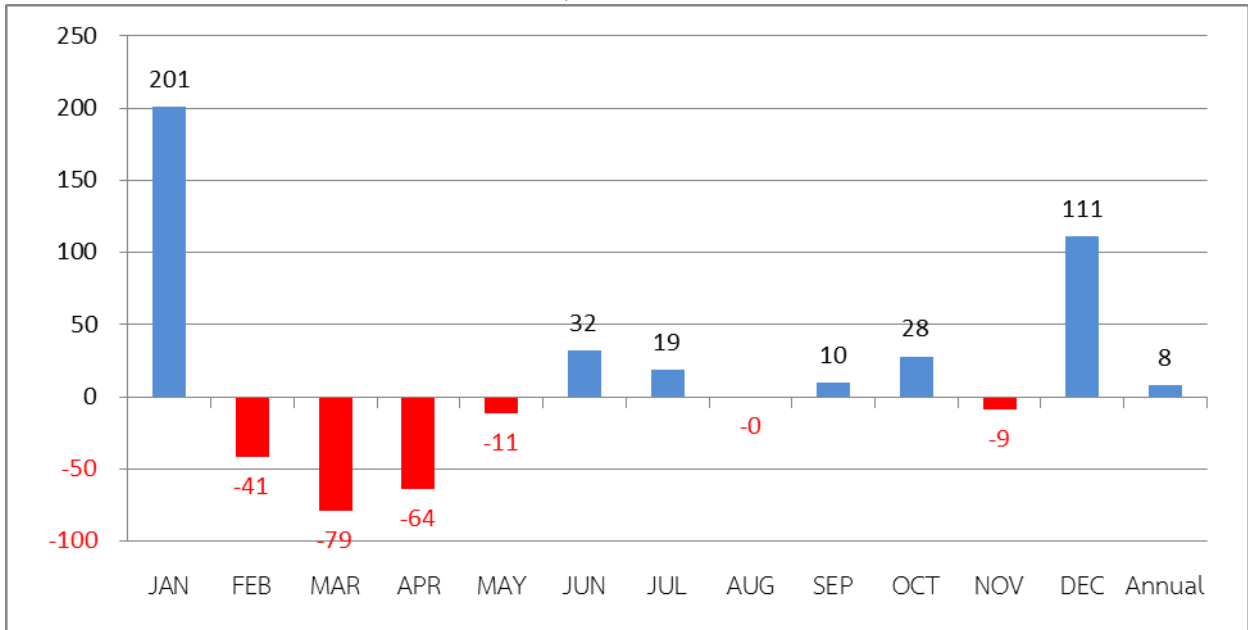
Monthly temperatures of Thailand during February 2016 were dominated by cool conditions in most of the regions. Mean temperature over Thailand was 0.6 °C below the 1981-2010 normal. These were the resulted from the high pressure area from China occasionally extended its ridge to cover upper Thailand coupled with the northeast monsoon prevailing over Thailand and the Gulf of Thailand. During the rest period Thailand still experienced warmer conditions in all regions. The 44.6 °C highest temperature of Thailand over 66 years (1951-2016) was recorded in this year at Mueang in Mae Hong Son Province on 28 April. For the minimum temperature reached the new lowest record in some areas especially during early 2016 with the lowest temperature was 2.3 °C at Umphang in Tak province on 9 February.

Note: Rainfall amount, temperatures and natural disasters are the preliminary information.

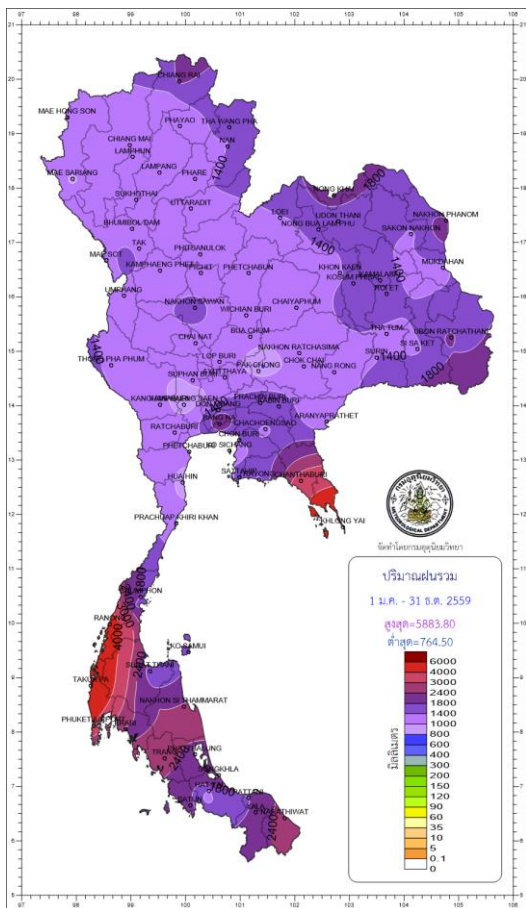
Climatological Center, Meteorological Development Bureau

17 February 2017

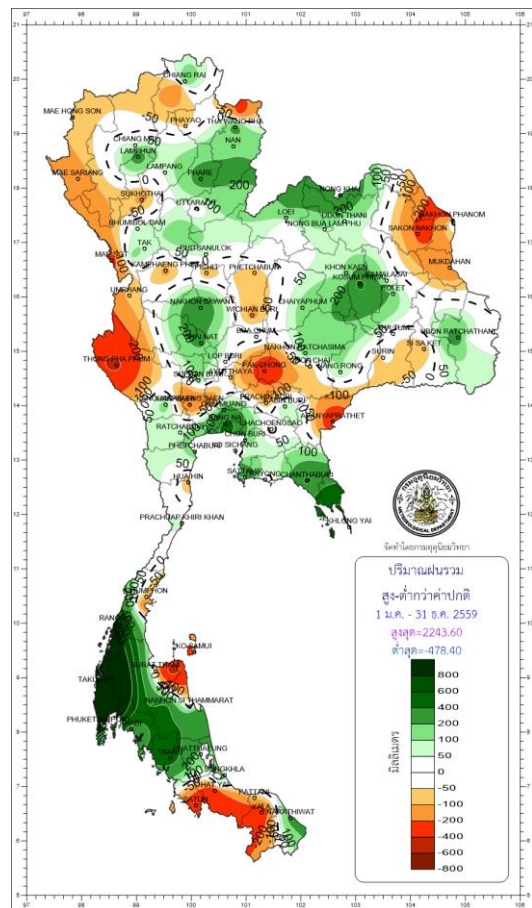
Thailand's Monthly Rainfall Anomalies (%) in 2016



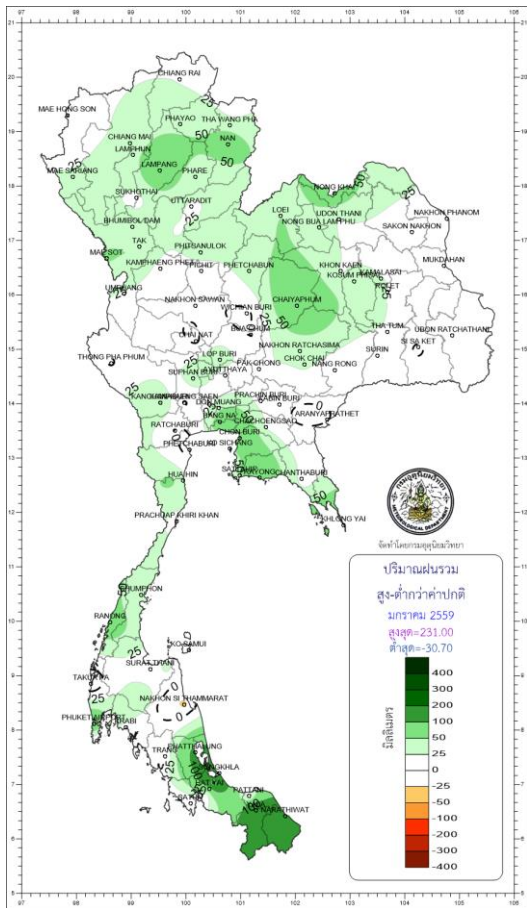
■ Above Normal ■ Below Normal



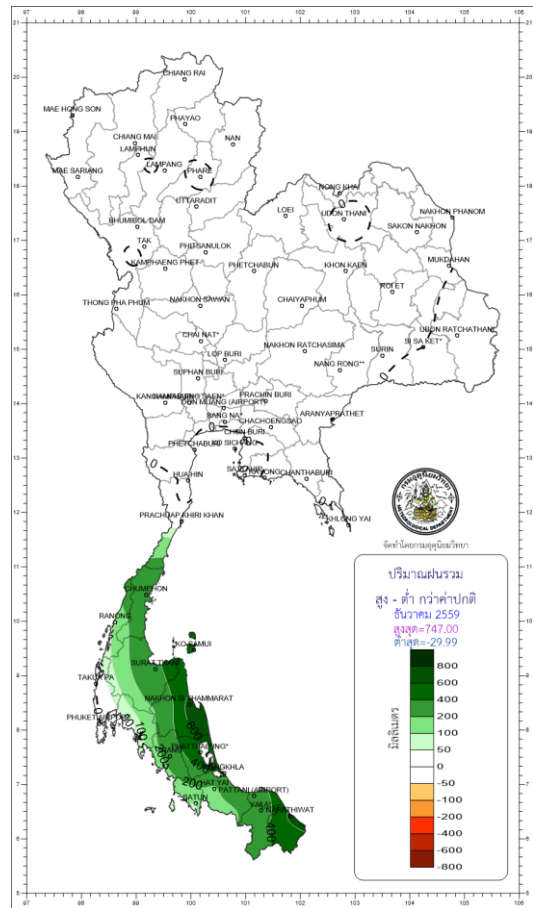
Annual Rainfall (mm.) in 2016



Annual Rainfall Anomalies(mm.) in 2016

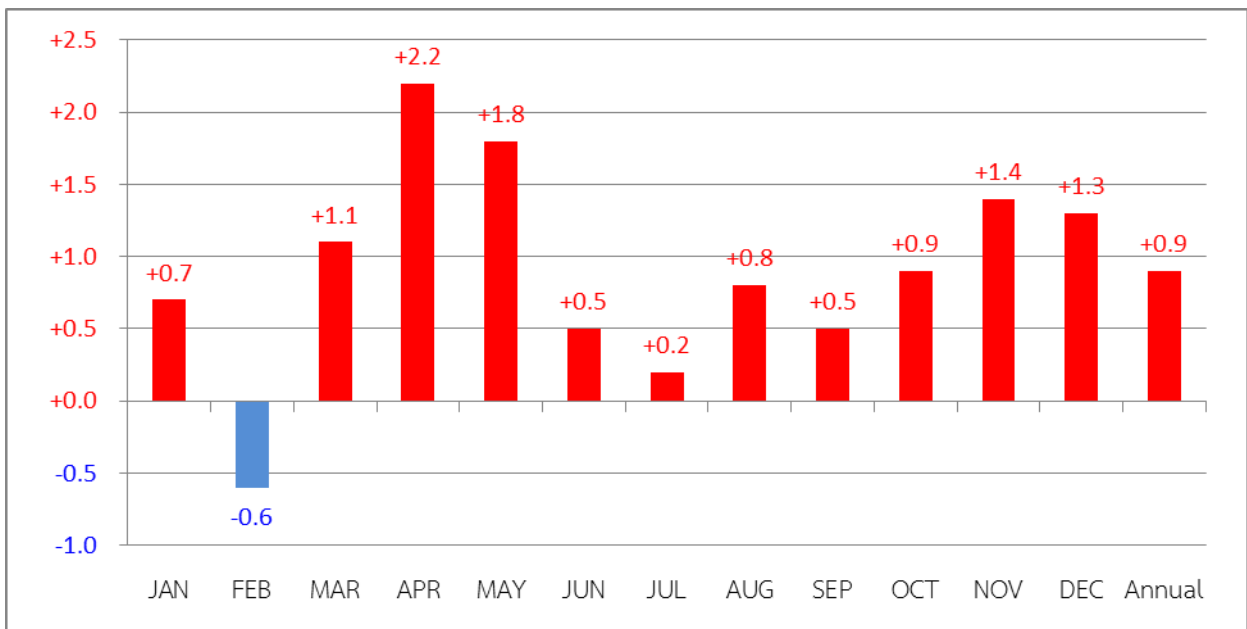


Rainfall Anomalies(mm.) in January 2016

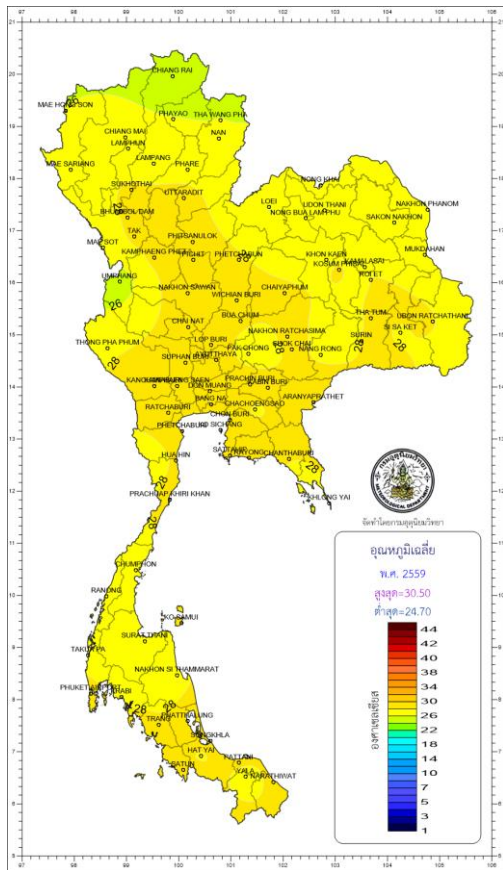


Rainfall Anomalies(mm.) in December 2016

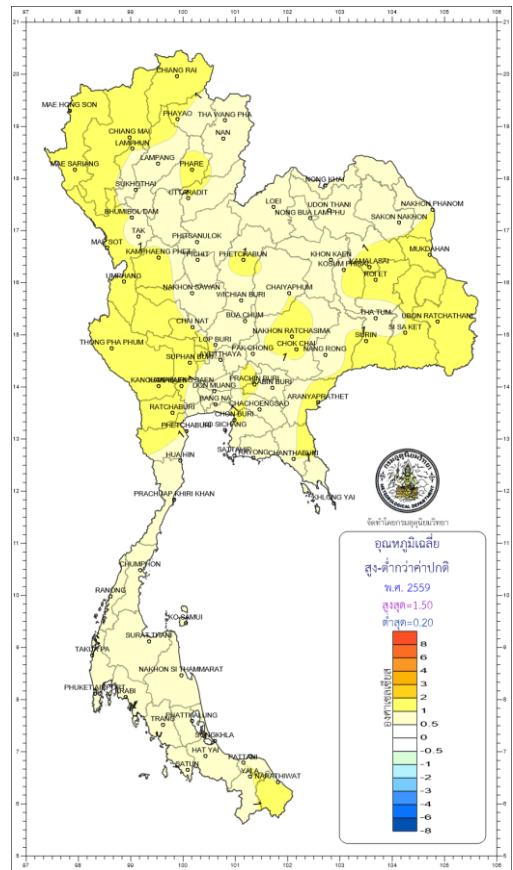
Thailand's Monthly Mean temperature Anomalies (°C) in 2016



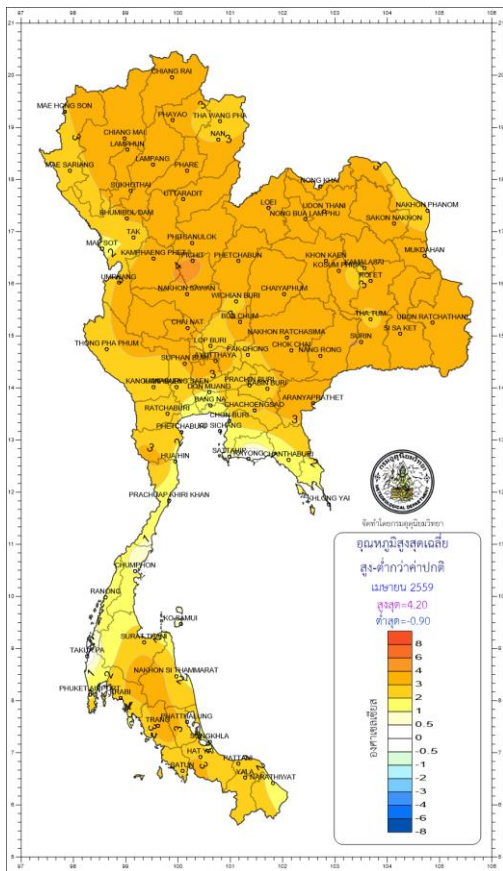
■ Above Normal ■ Below Normal



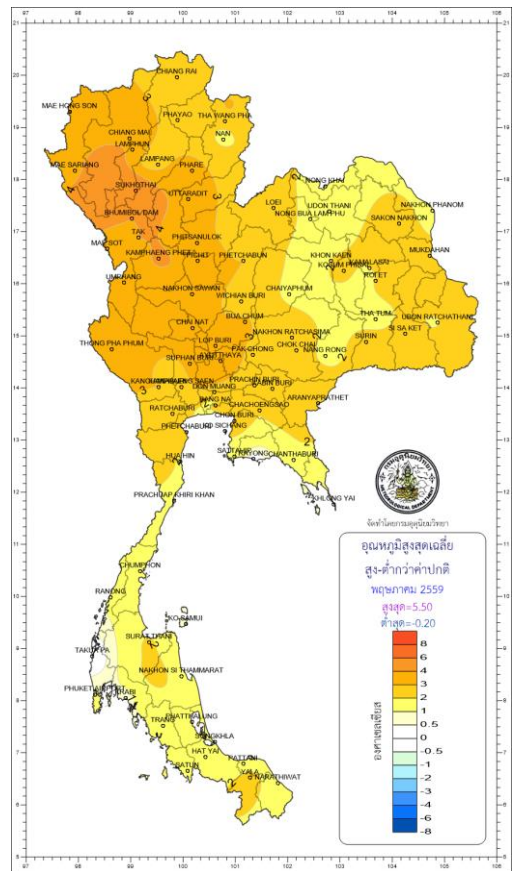
Annual Mean Temperature (°C) in 2016



Annual Mean Temperature anomalies (°C) in 2016



Mean Maximum Temperature Anomalies (°C) in April 2016



Mean Maximum Temperature Anomalies (°C) in May 2016

Breaking records of daily rainfall in Thailand

Station	New Record 2016		Previous Record		Start since
	Rainfall (mm.)	Date	Rainfall (mm.)	Date / Year	
January					
Nan	47.9	26	43.4	25/1951	1951
Nan Agromet. Stn.	54.6	26	41.6	2/1977	1969
Lampang	75.4	26	55.1	9/2015	1951
Lom Sak	26.6	21	26.1	11/1975	1970
Loei Agromet. Stn.	26.1	21	20.3	11/1975	1970
Chaiyaphum	55.7	19	41.3	27/2013	1957
Ubon Ratchathani	25.5	18	22.5	20/2010	1951
Bang Na Agromet. Stn.	76.1	19	74.4	27/2013	1969
Pilot Station	36.2	8	32.3	26/2013	1981
Phuket Airport	95.2	28	94.4	14/2001	1952
February					
Doi Ang Kang	46.4	25	18.4	3/2013	2004
March					
Khlong Yai	138.2	6	115.2	2/1976	1952
May					
Lom Sak	102.6	29	93.2	8/1990	1970
Nong Khai	149.2	29	124.2	25/1971	1968
Buriram	106.7	13	103.9	16/2013	2001
June					
Sukhothai	60.6	2	58.2	16/2014	2000
Umphang	74.0	29	62.1	28/1998	1978
Nakhon Si Thammarat Agromet.Stn.	75.9	13	62.0	26/2002	1984
Yala Agromet. Stn.	106.0	11	79.0	12/1982	1982
July					
Uttaradit	128.6	10	99.4	7/1954	1951
Chainat Agromet. Stn.	87.7	24	75.0	26/1992	1969
Chawang	83.3	28	70.4	17/2004	1998
Krabi	121.5	6	99.2	3/2013	1994
August					
Nan	136.6	14	135.6	15/1994	1951
Nan Agromet.Stn.	161.3	14	128.5	15/1994	1969
Roi Et	150.3	23	140.2	25/1963	1955
Chainat Agromet. Stn.	104.2	28	91.9	29/1999	1969
Songkhla	99.3	31	96.3	12/1972	1951
September					
Chiang Rai Agromet.Stn.	139.2	6	105.1	10/2003	1979
October					
Bangkok Port	131.0	24	118.2	3/1999	1994
November					
Doi Mu Soe Agromet.Stn.	58.9	10	36.4	21/1998	1993
Pichit Agromet.Stn.	99.5	9	75.4	9/2014	1992
Loei Agromet.Stn.	72.6	7	53.5	5/1974	1970
Buriram	77	7	51.3	17/2012	2001

Breaking records of daily rainfall in Thailand (Continue)

Station	New Record 2016		Previous Record		Start since
	Rainfall (mm.)	Date	Rainfall (mm.)	Date / Year	
December					
Laem Chabang	51.5	14	37.2	1/2002	1994
Surat Thani	274.1	2	183.3	9/1996	1988
Phatthalung Agromet.Stn.	302.4	3	253.8	15/1993	1981
Kho Hong Agromet.Stn.	223.4	1	218.3	9/2003	1969
Sa Dao	120.2	1	108.5	9/2003	1999
Satun	71.2	1	69.9	4/1983	1978

Breaking records of monthly rainfall in Thailand

Station	New Record 2016		Previous Record		Start since
	Rainfall (mm.)		Rainfall (mm.)	Year	
January					
Lampang	99.0		79.5	2015	1951
Nong Khai	81.8		71.3	2010	1968
Loei Agromet.Stn. จ.เลย	57.4		43.9	1983	1970
Chaiyaphum	105.7		46.9	2013	1957
Ubon Ratchathani	25.5		22.5	2010	1951
Bang Na Agromet.Stn.	116		77.9	2013	1969
Chon Buri	102.9		90.2	1975	1951
February					
Doi Ang Kang	66.1		21.1	2008	2004
May					
Takua Pa	875.8		831.3	1990	1981
Phuket Airport	652.4		641.3	1964	1952
Ko Lanta	523.4		481.0	1985	1981
Krabi	425.3		320.2	2013	1994
June					
Lamphun	277.2		261.7	1988	1981
Bangkok Metropolis	464.4		459.0	2015	1951
Takua Pa	911.8		825.8	2013	1981
Krabi	343.8		330.8	1998	1994

Breaking records of monthly rainfall in Thailand (Continue)

Station	New Record 2016	Previous Record		Start since
	Rainfall (mm.)	Rainfall (mm.)	Year	
July				
Phare	305.8	293.0	1971	1952
Si Samrong Agromet.Stn.	407.8	365.5	1978	1969
Sukhothai	282.6	249.6	2013	2000
Nang Rong	311.1	278.0	1985	1970
Pilot Station	253.6	201.4	1992	1981
Phra Sang	314.7	309.3	2005	1998
Chawang	601.6	330.7	2004	1998
September				
Kamalasai	430.6	388.3	2011	1998
October				
Nong Khai	189.4	186.9	1997	1968
Chawang	332.0	329.1	2000	1998
Ranong	872.8	868.1	1998	1951
Takua Pa	1156.7	784.0	1989	1981
November				
Pichit Agromet.Stn.	103.3	99.5	1996	1993
Nong Khai	99.5	91.6	2008	1968
loei	130.0	112.7	1996	1955
Loei Agromet.Stn.	135.8	123.2	1996	1970
Khon Kaen	142.8	109.3	1996	1951
Buriram	83.5	71.6	2012	2003
December				
Sawi Agromet.Stn.	464.8	441.7	2002	1969
Surat Thani	503.6	439.7	1951	1951
Surat Thani Agromet.Stn.	657.3	639.3	1996	1993
Phra Sang	321.9	227.9	2010	1998
Chawang	368.2	352.2	2005	1998
Nakhon Si Thammarat Agromet.Stn.	1130.2	1051.0	2005	1984

Breaking records of Maximum Temperature in Thailand

Station	New Record 2016		Previous Record		Start since
	Temperature (°C.)	Date	Temperature (°C.)	Date / Year	
February					
Thong Pha Phum	39.2	15	39.2	23/1975,17/1996and24,25/1998	1970
Khlung Yai	35.9	25	35.7	9/2006	1983
March					
Pichit Agromet.Stn.	39.9	24	38.8	15/2015	1993
Sakon Nakhon Agromet.Stn.	41.0	18	41.0	29/2013	1969
Tha Phra Agromet.Stn.	41.6	10	41.2	29/1993	1970
Kosum Phisai	41.7	24	41.5	21/1996	1970
Roi Et	40.7	18	40.5	26/1958	1955
Si Sa Ket Agromet.Stn.	40.5	20,22	40.2	31/2007	1983
Surin Agromet.Stn.	41.3	22	41.1	18/1986,31/2007	1969
Chok Chai	41.2	18	40.5	31/1986,16 and 22/1998	1970
Burirum	41.5	18,22	41.2	29/2013	2003
Nakhon Sawan	41.8	19	41.4	20/1986	1951
Takfa Agromet.Stn.	40.2	19,22,24	40.0	29 and 30/1987,29/1993	1969
Chainat Agromet.Stn.	40.5	22	39.7	11/1980	1970
Ayutthaya Agromet.Stn.	40.0	22	39.1	27/2013	1994
Suphan Buri	41.0	24	41.0	26/1958	1951
U Thong Agromet.Stn.	41.8	24	41.8	26/1983	1969
Kanchanaburi	42.3	22	42.1	18/1998	1952
Ratchaburi	40.0	24	39.5	16/2007	1993
Sa Kaeo	40.9	17	40.0	28/2013	1998
Aranyaprathet	40.7	18	40.3	30/2007,31/2013	1952
Chawang	39.5	17	39.1	11/1998	1998
Phatthalung Agromet.Stn.	36.3	23	35.8	8/1999	1981
Hat Yai	38.6	23	38.3	24/1982	1973
Krabi	39.2	20	39.1	6/1998	1994
April					
Mae Hong Son	44.6	28	43.4	23/2010	1955
Chiang Rai Agromet.Stn.	41.2	28	40.8	23/1990	1979
Chiang Mai	41.6	15,28	41.5	29/1960	1952
Doi Ang Kang	35.1	28	32.0	12/2010	2004
Nan Agromet.Stn.	42.8	14	41.6	11/1983	1969
Tha Wang Pha	42.5	14	42.5	22/2010	1970

Breaking records of Maximum Temperature in Thailand (Continue)

Station	New Record 2016		Previous Record		Start since
	Temperature (°C.)	Date	Temperature (°C.)	Date / Year	
April (Cont.)					
Thung Chang	41.6	27	40.3	22/2010	1998
Lamphun	43.6	12	42.6	29/1983	1981
Lampang	43.5	15	43.5	18/1983	1951
Lampang Agromet.Stn.	43.5	12	42.7	21/1992	1982
Thoen	43.8	11	43.1	6/2010	2004
Sukhothai	44.3	12	43.1	20/2015	2000
Bhumibol Dam	43.9	27	43.7	26/1998	1960
Mae Sot	41.2	19	41.1	8/2010	1951
Doi Musoe Agromet.Stn.	36.5	19	36.2	1/2005	1993
Lom Sak	42.0	18	41.5	29/1975	1970
Phetchabun	43.3	26	43.0	25/1958	1951
Kamphaeng Phet	44.0	26	43.0	14,15/1983	1981
Pichit Agromet.Stn.	42.2	26	41.7	21/2015	1993
Sakon Nakhon Agromet.Stn.	42.5	12,15,17	42.3	14/1983	1969
Tha Phra Agromet.Stn.	42.7	11,18	42.6	5/2013	1970
Kosum Phisai	42.5	11	42.4	14/1983	1970
Kamalasai	41.9	17	41.8	5/2013	1998
Roi Et	42.3	11	42.2	21/2015	1955
Roi Et Agromet.Stn.	41.2	15,17	41.2	6/2013	1983
Chaiyaphum	42.6	11,18	42.6	14/1983	1957
Ubon Ratchathani Agromet.Stn.	42.6	15	42.0	14/1998	1951
Surin	42.0	11	41.6	28/1960,14/1983	1951
Surin Agromet.Stn.	43.3	16	41.8	14/1983,21/1989	1969
Nakhon Ratchasima	43.2	11	42.7	7/1979	1951
Chok Chai	42.5	11	41.1	14/1998	1970
Buriram	43.2	16	42.5	21/2015	2003
Nang Rong	43.0	12	41.8	12/1985	1970
Nakhon Sawan	43.4	19	42.5	25/1969	1951
Tak Fa Agromet.Stn.	41.7	22,26	41.5	23/1990	1969
Chainat	41.8	11	41.6	5/2013	1970
Ayutthaya Agromet.Stn.	42.1	10	40.6	24/1998	1994
Bua Chum	43.2	10	42.7	14/1983	1970
Suphan Buri	42.2	10	42.2	24/1960	1955
Kanchanaburi	43.5	11	43.5	29/1958,14/1983,and14,20/1992	1952

Breaking records of Maximum Temperature in Thailand (Continue)

Station	New Record 2016		Previous Record		Start since
	Temperature (°C.)	Date	Temperature (°C.)	Date / Year	
April (Cont.)					
Ratchaburi	41.5	12	40.9	24/1998	1993
Kamphaeng Saen Agromet.Stn.	41.4	11	40.8	23/1973,13/1983	1973
Pathum Thani Agromet.Stn.	40.7	10	40.5	15/2004	1998
Sa Kaeo	42.2	11	40.8	21/2015	1998
Aranyaprathet	42.2	11	41.7	14/2003	1952
Chachoengsao Agromet.Stn.	41.0	11	40.2	15/2004	1989
Khlong Yai	35.7	18	35.6	25/1983	1952
Nong Phlub Agromet.Stn.	42.0	11	41.8	21/2015	1974
Sawi Agromet.Stn.	38.6	27	38.6	13/1983,7/1996,13/1998	1969
Surat Thani	41.3	11	39.7	13/1992	1951
Surat Thani Agromet.Stn.	39.2	12	37.8	13/1998	1993
Ko Samui	38.0	11	36.6	21/2015	1969
Chawang	41.0	10,16	41.0	15/1998	1998
Phatthalung Agromet.Stn.	39.4	12	37.3	23/1990	1981
Hat Yai	39.7	28	39.2	15/1998	1973
Kho Hong Agromet.Stn.	39.9	11	37.5	14/2010	1969
Sa Dao	40.3	27	37.7	5/2015	1999
Pattani	38.7	21	37.9	23/1998	1964
Yala Agromet.Stn.	40.1	14,28	40.0	14/1998	1982
Phuket	37.8	20	37.8	9/1979,1/1998	1952
Krabi	39.2	20	38.9	3/1998	1994
Trang	40.3	16	40.3	24/1992,17/1998	1951
Satun	39.6	20	38.9	18/1983	1978
May					
Mae Sariang	43.0	15	42.7	8/1967,6/1998	1952
Chiang Rai	41.2	12	41.2	2/1966	1951
Chiang Rai Agromet.Stn.	41.8	12	40.3	2/2010	1979
Phayao	41.5	12	40.7	10/1992	1981
Chiang Mai	42.5	11	42.4	1/2005	1952
Doi Ang Kang	34.0	11	32.1	9/2010	2004
Tha Wang Pha	41.8	12	41.4	9/1992	1970
Lamphun	44.0	12	42.3	6/1992	1981
Thoen	43.4	10	41.6	7/2010	2004
Phare	43.2	11	43.0	10/2010	1952

Breaking records of Maximum Temperature in Thailand (Continue)

Station	New Record 2016		Previous Record		Start since
	Temperature (°C.)	Date	Temperature (°C.)	Date / Year	
May (Cont.)					
Uttaradit	43.6	11	43.3	15/1963	1951
Si Samrong Agromet.Stn.	43.0	11	42.2	22,23/1983,9/1992	1969
Sukhothai	44.5	11	42.8	10/2010	2000
Bhumibol Dam	43.9	11	43.0	2/1998	1960
Tak	43.8	7,11	43.0	5/1969	1954
Mae Sot	41.8	7	41.6	9,11/1998	1951
Umphang	40.0	7	39.5	4/1998	1993
Doi Musoe Agromet.Stn.	36.9	7	35.7	9/1998	1993
Phitsanulok	42.7	11	42.0	2/1980	1951
Phetchabun	42.4	6	42.4	17/1957	1951
Kamphaeng Phet	43.6	12	41.8	22/1983	1981
Pichit Agromet.Stn.	42.3	6	40.7	2/2013	1993
Surin Agromet.Stn.	41.2	13	41.0	6/2010	1969
Nakhon Ratchasima	41.8	11	41.4	12/1970	1951
Pak Chong Agromet.Stn.	39.0	11	38.5	7/1997	1969
Chok Chai	40.7	11	40.2	1,4/1998	1970
Nakhon Sawan	43.7	7	42.7	16/1963	1951
Tak Fa Agromet.Stn.	41.5	6	41.2	10/2010	1969
Chainat	41.7	13	41.4	10/2010	1970
Ayutthaya Agromet.Stn.	41.7	13	40.4	1/1998	1994
Bua Chum	42.6	7	41.8	10/2010	1970
Thong Pha Phum	42.3	7	41.5	1/1983	1970
Kamphaeng Saen Agromet.Stn.	41.0	13	41.0	3,8/1980	1973
Pathum Thani Agromet.Stn.	41.0	13	39.8	9/2010	1998
Sa Kaeo	40.9	5	40.3	6/2005	1998
Chon Buri	39.3	6	39.0	10/2010	1951
Ko Sichang	38.0	16	36.2	5/1960	1959
Phatthaya	36.3	12	36.0	8/1992	1981
Chanthaburi	37.0	5,7,12	36.8	1/1960	1951
Phliu Agromet.Stn.	37.2	14	36.1	4/1998	1969
Phetchaburi	38.7	25	38.5	18/2010	1981
Nong Phlub Agromet.Stn.	40.2	12	40.2	10/2010	1974
Hua Hin	38.7	22,26	38.0	14/2012	1951
Surat Thani	41.4	11	39.8	11/2010	1994

Breaking records of Maximum Temperature in Thailand (Continue)

Station	New Record 2016		Previous Record		Start since
	Temperature (°C.)	Date	Temperature (°C.)	Date / Year	
May (Cont.)					
Phra Sang	39.8	5	38.6	2/2005	1998
Chawang	40.6	13	39.5	2/2005	1998
Nakhon Si Thammarat	38.1	12	38.1	1/1998	1952
Nakhon Si Thammarat Agromet.Stn.	38.1	12	37.7	11/2016	1984
Phatthalung Agromet.Stn.	37.7	12	37.3	27/2010	1981
Hat Yai	38.5	4	38.3	7/2010	1973
Sa Dao	38.6	5	38.0	10/2010	1999
Pattani	38.0	5	38.0	6/2005	1964
Yala Agromet.Stn.	39.8	2	38.8	4,5/1998	1982
Phuket	37.9	5	37.8	11/1998	1952
Trang Airport	39.0	9,10	39.0	2,3/2005	1951
Satun	38.1	3	37.8	5/1998	1978
June					
Surat Thani Agromet.Stn.	36.5	13	36.4	1/1998	1993
Ko Samui	36.9	12	36.3	11/2016	1969
Sa Dao	37.7	25	37.0	5/2016	1999
Yala Agromet.Stn.	37.8	2,10	37.7	18/1995	1982
July					
Chumphon	35.6	19	35.4	28/1987	1951
Phra Sang	35.0	4,	35.0	3,23/2015	1998
Hat Yai	37.3	3	37.3	8/2005	1973
Kho Hong Agromet.Stn.	37.0	2	36.5	22,26/2002	1969
Sa Dao	37.8	3	36.4	10/2005	1999
Phuket Airport	37.0	6	34.4	21/2014	1952
August					
Pichit Agromet.Stn.	36.0	21	36.0	11/2015	1993
Kamalasai	35.9	21	35.6	16/2003,10/2016	1998
Burirum	36.3	21	36.0	24/2008, 18/2014	2003
Ratcha Buri	36.9	22	36.9	24/2006	1993
Klong Yai	35.0	17	34.2	9/1987	1952
September					
Thoen	37.0	17,28	36.5	29/2015	2004
Udon Thani	36.0	28	35.8	12/1951,2/1954,4/2006	1951
Sa Kaew	37.9	9	36.1	5/2014	1998

Breaking records of Maximum Temperature in Thailand (Continue)

Station	New Record 2016		Previous Record		Start since
	Temperature (°C.)	Date	Temperature (°C.)	Date / Year	
September (Cont.)					
Ko Samui	35.5	15	35.4	1/1990	1969
Phatthalung Agromet.Stn.	36.8	25	36.6	20/2014,15/2016	1981
Songkhla	35.9	14	35.9	11/1975	1951
October					
Thoen	36.6	10	35.8	4/2014,16,19,29/2015	2004
Roi Et	35.0	22	34.9	12/2003	1955
Kamphaeng Saen Agromet.Stn.	35.8	16	35.5	20/2015	1973
Ko Samui	34.6	7	34.5	2/2015	1969
Nakhon Si Thammarat Agromet.Stn.	35.4	11	35.3	1/2013	1984
Phatthalung Agromet.Stn.	36.4	1	36.1	2/2009,23/2010	1981
Kho Hong Agromet.Stn.	36.2	4	36.0	1/2016	1969
Yala Agromet.Stn.	36.3	1	35.5	17/2008	1982
November					
Hua Hin	34.0	21	34.0	22/2006	1951
Yala Agromet.Stn.	36.8	7	34.6	17/2002,7/2003	1982
December					
Ubon Ratchathani	36.7	21	35.9	5,7/2002	1951
Ayutthaya Agromet.Stn.	36.5	26	36.0	7/1997,20/2007,21/2016	1994
Pathum Thani Agromet.Stn.	37.0	21	36.9	1/2015	1998
Nakhon Si Thammarat	33.5	14	33.5	2/2014	1952
Phatthalung Agromet.Stn.	32.8	13	32.8	11/2015	1981
Songkhla	33.4	15	33.3	8/1961,27/1965	1951
Kho Hong Agromet.Stn.	33.8	29	33.4	30/1977,5/2006	1969
Narathiwat	33.5	15	33.3	6/1995	1956

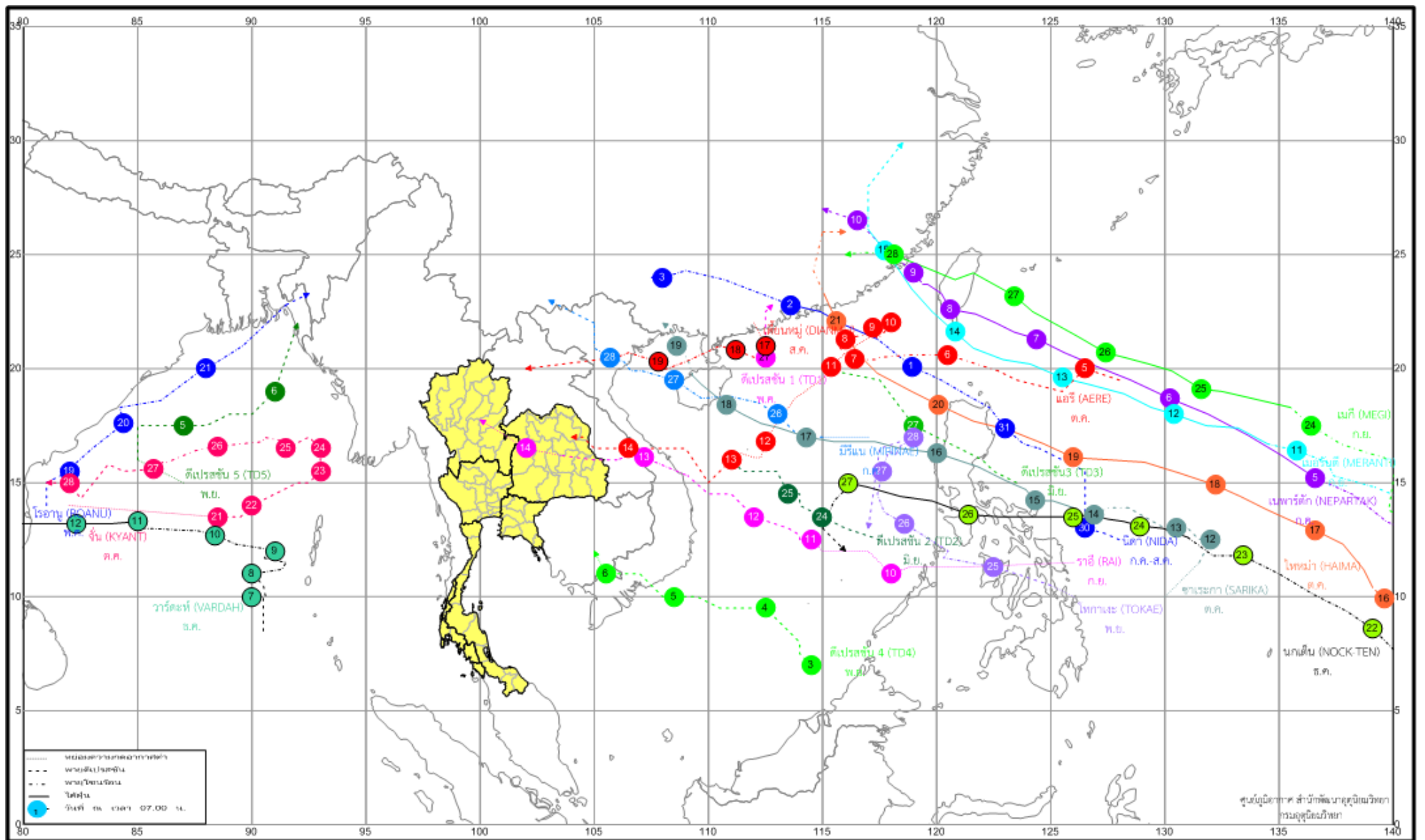
Breaking records of Minimum Temperature in Thailand

Station	New Record 2016		Previous Record		Start since
	Temperature (°C.)	Date	Temperature (°C.)	Date / Year	
January					
Doi Ang Kang	1.4	26	6.0	29/2007	2006
Pathum Thani Agromet.Stn.	13.5	25	13.8	23/2014	1998
Pilot Station	16.5	27	17.5	25/1983	1981
February					
Doi Ang Kang	6.7	7	7.5	3/2007	2006
Thung Chang	6.4	9	8.6	16/1998	1997
Thoen	8.8	9	10.8	3,4/2007	2004
Sukhothai	11.1	9	12.8	2/2007	2000
Bhumibol Dam	9.6	9	11.0	12,13/1974	1960
Tak	9.2	9	10.5	14/1974	1954
Mae Sot	8.5	9	9.2	21/1957	1951
Umphang	2.3	9	3.9	13/1992	1977
Doi Mu Soe Agromet.Stn.	5.9	9	6.0	3/2007	1992
Phitsanulok	10.0	9	13.0	1/1993	1951
Lom Sak	9.8	9	10.6	13/1974	1970
Wichian Buri	10.1	9	10.9	13/1974	1970
Kamphaeng Phet	10.5	9	12.2	1/1993	1981
Pichit Agromet.Stn.	10.7	9	11.7	1/1993	1992
Nong Khai	9.1	8	9.6	13/1993	1968
Udon Thani	7.8	8	9.4	28/1963	1954
Nakhon Phanom Agromet.Stn.	4.2	8	6.5	3/2007	1983
Khon Kaen	10.3	8	10.4	11/1974	1951
Tha Phra Agromet.Stn.	8.0	8	9.7	12/1974	1969
Kamalasai	8.2	8	10.2	2/2000	1998
Roi Et Agromet.Stn.	10.4	8	11.1	4/2007	1983
Ubon Ratchathani	11.5	8	11.7	11/1977	1951
Surin	8.0	8	11.0	5/1967	1951
Surin Agromet.Stn.	9.5	9	10.2	13/1974	1969
Burirum	8.5	10	10.5	4/2007	2003
Nakhon Sawan	10.4	9	12.0	1/1993	1951
Chainat Agromet.Stn.	12.2	9	14.0	13/1974	1970
Bua Chum	9.8	9	11.6	4/2007	1970
Don Muang Airport	14.9	8	16.0	11/1974	1951
Sa Kaew	13.0	8	13.7	5/2007	1998
Phliu Agromet.Stn.	14.0	10	14.5	18/1981	1969
March					
Kamalasai	12.5	1	13.3	6/2005	1998
Burirum	13.7	1	14.3	30/2011	2003
Ko Samui	20.7	10	21.0	4/1992	1969

Breaking records of Minimum Temperature in Thailand (Continue)

Station	New Record 2016		Previous Record		Start since
	Temperature (°C.)	Date	Temperature (°C.)	Date / Year	
April Hat Yai	20.0	8	20.0	5/1983	1973
May Ko Samui	21.3	25	21.7	28/2015	1969
June Ayutthaya Agromet.Stn.	21.7	21	21.8	11/2004,6/2007	1994
Phliu Agromet.Stn.	21.0	7	21.2	5/1976	1969
Kho Hong Agromet.Stn.	21.0	9	21.4	25/1981	1969
July Umphang	17.6	26	17.6	16/1985	1977
Pilot Station	22.0	19	22.0	4/1988	1981
Chachoengsao Agromet.Stn.	21.0	15	21.2	30/2012	1989
August Ayutthaya Agromet.Stn.	21.6	29	21.7	29/1993	1994
Ko Samui	20.3	4	21.6	4/1976	1969
September Bhumibol Dam	19.4	28	20.1	23/1986	1960

Climatological Center, Meteorological Development Bureau



TRACKS OF TROPICAL CYCLONE AFFECTING THAILAND IN 2016

Monthly and Annual Rainfall of Thailand in 2016

Part	JAN	FEB	MAR	APR	MAY	JUN	JUL	AUG	SEP	OCT	NOV	DEC	Annual
North													
Rainfall amount (mm)	39.9	4.5	1.5	27.6	124.8	208.1	213.7	194.7	231.1	161.2	47.0	2.3	1256.4
Normal	4.6	10.4	28.1	71.3	177.8	156.2	176.0	223.0	218.3	124.1	32.9	8.2	1230.9
Departure from normal (mm)	35.3	-5.9	-26.6	-43.7	-53.0	51.9	37.7	-28.3	12.8	37.1	14.1	-5.9	25.5
Departure from normal (%)	767	-57	-95	-61	-30	33	21	-13	6	30	43	-72	2
Northeast													
Rainfall amount (mm)	34.8	0.3	2.1	71.3	167.9	259.0	237.1	266.2	288.4	119.3	52.9	1.5	1500.8
Normal	4.8	18.5	44.7	86.3	187.1	203.4	211.4	266.2	242.0	117.1	19.5	3.5	1404.5
Departure from normal (mm)	30.0	-18.2	-42.6	-15.0	-19.2	55.6	25.7	0.0	46.4	2.2	33.4	-2.0	96.3
Departure from normal (%)	625	-98	-95	-17	-10	27	12	0	19	2	171	-57	7
Central													
Rainfall amount (mm)	37.7	0.0	19.4	13.3	119.2	214.6	178.7	230.6	269.3	256.4	51.2	0.4	1390.8
Normal	6.7	12.3	36.0	79.5	172.1	145.2	155.5	181.1	257.3	187.1	37.2	5.2	1275.2
Departure from normal (mm)	31.0	-12.3	-16.6	-66.2	-52.9	69.4	23.2	49.5	12.0	69.3	14.0	-4.8	115.6
Departure from normal (%)	463	-100	-46	-83	-31	48	15	27	5	37	38	-92	9
East													
Rainfall amount (mm)	60.4	10.3	26.9	25.3	147.8	356.0	342.9	273.3	383.2	304.3	90.6	4.4	2025.4
Normal	16.1	29.1	62.1	98.9	223.9	261.5	277.5	302.5	330.1	225.1	53.3	8.1	1888.2
Departure from normal (mm)	44.3	-18.8	-35.2	-73.6	-76.1	94.5	65.4	-29.2	53.1	79.2	37.3	-3.7	137.2
Departure from normal (%)	275	-65	-57	-74	-34	36	24	-10	16	35	70	-46	7
South (East coast)													
Rainfall amount (mm)	96.1	40.0	17.6	7.2	91.5	119.1	139.5	100.1	93.8	269.2	162.8	565.7	1702.6
Normal	59.7	34.5	68.4	75.4	143.7	113.0	118.9	124.1	149.8	255.3	357.2	236.9	1736.9
Departure from normal (mm)	36.4	5.5	-50.8	-68.2	-52.2	6.1	20.6	-24.0	-56.0	13.9	-194.4	328.8	-34.3
Departure from normal (%)	61	16	-74	-91	-36	5	17	-19	-37	5	-54	139	-2
South (West coast)													
Rainfall amount (mm)	51.3	32.0	8.8	24.9	534.1	442.9	412.6	495.7	540.4	581.9	226.7	142.6	3493.9
Normal	26.4	27.5	88.8	160.6	310.1	312.4	336.5	398.5	423.7	366.5	193.3	75.0	2719.3
Departure from normal (mm)	24.9	4.5	-80.0	-135.7	224.0	130.5	76.1	97.2	116.7	215.4	33.4	67.6	774.6
Departure from normal (%)	94	16	-90	-85	72	42	23	24	28	59	17	90	29
Over Country													
Rainfall amount (mm)	51.1	12.0	10.3	32.0	171.6	249.9	240.9	240.3	278.3	239.8	90.0	101.9	1718.1
Normal	17.0	20.4	49.4	88.7	193.3	188.7	202.6	240.9	252.9	187.2	98.4	48.2	1587.7
Departure from normal (mm)	34.1	-8.4	-39.1	-56.7	-21.7	61.2	38.3	-0.6	25.4	52.6	-8.4	53.7	130.4
Departure from normal (%)	201	-41	-79	-64	-11	32	19	-0	10	28	-9	111	8

Remark : Based on 1981-2010 normal

Climatological Center, Meteorological Development Bureau

Monthly and Annual Mean Temperature of Thailand in 2016

Part	JAN	FEB	MAR	APR	MAY	JUN	JUL	AUG	SEP	OCT	NOV	DEC	Annual
North													
Mean Temperature (°C)	22.2	24.0	28.9	32.3	30.9	28.3	27.6	27.6	27.5	27.4	26.2	23.9	27.2
Normal	22.4	24.6	27.6	29.5	28.6	27.9	27.4	27.1	27.0	26.4	24.4	22.0	26.2
Departure from normal (°C)	-0.2	-0.6	1.3	2.8	2.3	0.4	0.2	0.5	0.5	1.0	1.8	1.9	1.0
Northeast													
Mean Temperature (°C)	24.8	23.8	29.4	32.5	30.4	29.2	28.2	28.5	27.8	27.9	26.5	24.4	27.8
Normal	23.4	25.7	28.2	29.7	28.8	28.5	28.0	27.7	27.3	26.6	24.9	22.9	26.8
Departure from normal (°C)	1.4	-1.9	1.2	2.8	1.6	0.7	0.2	0.8	0.5	1.3	1.6	1.5	1.0
Central													
Mean Temperature (°C)	26.5	27.3	30.4	32.7	31.9	29.5	28.8	29.1	28.4	28.4	28.1	26.6	29.0
Normal	25.9	27.8	29.5	30.5	29.5	28.9	28.5	28.2	27.9	27.6	26.7	25.2	28.0
Departure from normal (°C)	0.6	-0.5	0.9	2.2	2.4	0.6	0.3	0.9	0.5	0.8	1.4	1.4	1.0
East													
Mean Temperature (°C)	27.2	27.4	29.7	31.1	30.9	29.1	28.5	29.2	28.3	28.0	28.2	27.1	28.7
Normal	26.4	27.7	28.8	29.6	29.2	28.8	28.4	28.2	27.8	27.4	27.1	26.1	28.0
Departure from normal (°C)	0.8	-0.3	0.9	1.5	1.7	0.3	0.1	1.0	0.5	0.6	1.1	1.0	0.7
South (East coast)													
Mean Temperature (°C)	27.4	27.2	28.5	30.1	29.9	28.6	28.3	28.7	28.2	27.6	27.5	26.5	28.2
Normal	26.0	26.8	27.8	28.8	28.5	28.2	27.9	27.8	27.4	27.0	26.4	25.8	27.4
Departure from normal (°C)	1.4	0.4	0.7	1.3	1.4	0.4	0.4	0.9	0.8	0.6	1.1	0.7	0.8
South (West coast)													
Mean Temperature (°C)	28.6	28.6	29.7	30.5	29.1	27.9	27.9	28.1	27.3	27.2	27.6	27.1	28.3
Normal	27.2	27.8	28.4	28.7	28.2	28.0	27.6	27.6	27.0	26.8	26.8	26.7	27.6
Departure from normal (°C)	1.4	0.8	1.3	1.8	0.9	-0.1	0.3	0.5	0.3	0.4	0.8	0.4	0.7
Over Country													
Mean Temperature (°C)	25.3	25.7	29.3	31.7	30.6	28.8	28.1	28.4	27.8	27.7	27.1	25.5	28.0
Normal	24.6	26.3	28.2	29.5	28.8	28.3	27.9	27.6	27.3	26.8	25.7	24.2	27.1
Departure from normal (°C)	0.7	-0.6	1.1	2.2	1.8	0.5	0.2	0.8	0.5	0.9	1.4	1.3	0.9

Remark : Based on 1981-2010 normal

Climatological Center, Meteorological Development Bureau