

Monthly Weather Summary in Thailand September 2015

September 2015 was dominated by the monsoon trough which occasionally lay across the northern, upper central and upper northeastern parts coupled with the prevailing of southwest monsoon over the Andaman Sea, southern part and the Gulf of Thailand throughout the month. Besides, there was the tropical storm “VAMCO (1519)” which was the first tropical storm entering Thailand this year at Khong Chiam in Ubon Ratchathani province as the tropical depression in the morning of September 15. It later moved through Sri Sa Ket, Surin and Buriram provinces and downgraded into the low pressure cell in the afternoon of the same day covering the lower northeastern, central and eastern parts for few days before moved further to cover Myanmar in the morning of September 18. These conditions caused plentiful of rainfall in much of Thailand during the middle of the month especially in the central, eastern and along the southern Thailand west coast that experienced heavy to very heavy rainfall in several areas with flash flooding in some areas during that time. However, with the weakening of the southwest monsoon and periodic shift of the monsoon trough northwards to lie over Myanmar and Laos and sometime disappeared, less rainfall was observed in majority areas. Monthly rainfall was above normal in most parts of Thailand i.e. central part 36.3 mm (14%), eastern part 47.4 mm (14%), southern part (east coast) 10.1 mm (7%) and southern part (west coast) 158.9 mm (38%) except for below normal in northern part 49.1 mm (22%) and northeastern part 21.9 mm (9%). The average rainfall over the whole area of Thailand was 4 percent higher than normal. Mean temperatures were above normal in all parts.

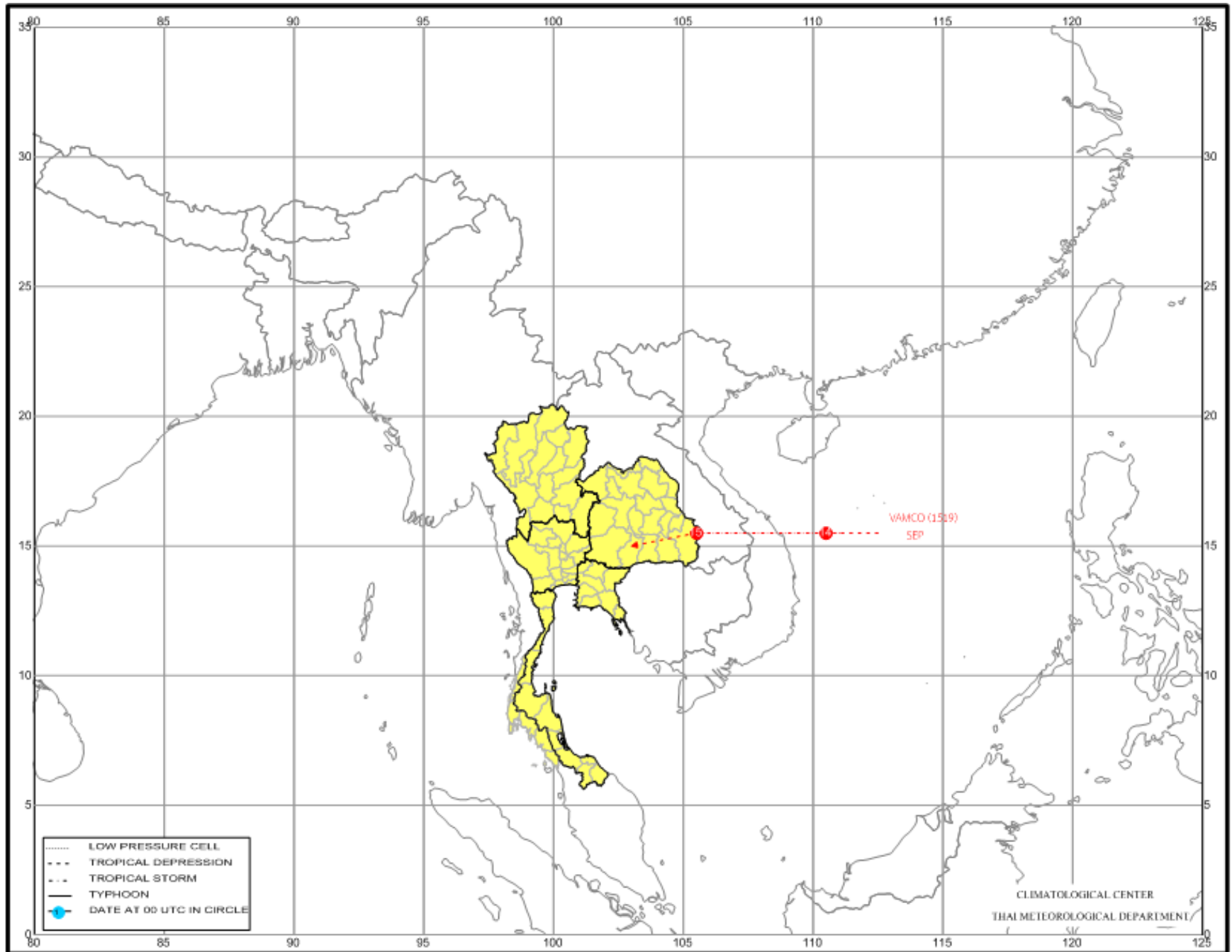
1 – 10 September: During the first half of the period, the monsoon trough lying across the northern and northeastern parts toward the low pressure cell in the Gulf of Tonkin before shifting northwards to lie over Myanmar and Laos during September 6-8 and moving back to lie across the northern and northeastern parts to the low pressure cell in the South China Sea during late period accompanied with the moderate southwest monsoon blowing across the Andaman Sea, Thailand and the Gulf of Thailand nearly the whole period. These resulted in abundant rainfall over upper Thailand almost the whole period with heavy to very heavy rainfall in some areas mainly during early and late period. The highest daily rainfall was 178.2 millimeter at Kaeng Khro in Chaiyaphum province on September 2. Flash floods occurred at Nan province on September 3 and Chiang Rai province on September 4. However, the areas of the central and eastern parts received less rainfall during September 6-8. In southern Thailand, widely scattered to scattered rain with heavy rainfall in some areas was observed along the east coast while widely scattered rain was found along the west coast during early period then increasing in rainfall to scattered to fairly widespread with isolated heavy rainfall mainly during late period. The maximum daily rainfall of 88.9 millimeter was measured at Amphoe Mueang in Satun province on September 9. Flash flood occurred at Phattalung province on the same day.

11 – 20 September: The monsoon trough lay across the northern, upper central and northeastern parts toward the active low pressure cell in the middle South China Sea during the middle of the period and it later intensified into the tropical depression and tropical storm “VAMCO (1519)” before making landfall in the south of Danang, Vietnam on September 14. It moved across Laos and

downgraded into tropical depression before entering Thailand at Khong Chiam, Ubon Ratchathani province in the morning of September 15. It moved west-southwestwards pass Si Sa Ket, Surin and Buriram provinces and weakening into low pressure cell covering in the areas of lower northeastern, central, eastern parts of Thailand and Cambodia before moved further to Myanmar and the Gulf of Bengal in the morning of September 18. In addition with the southwest monsoon which prevailing over the Andaman Sea, southern Thailand and the Gulf of Thailand was strengthened during mid-period. These conditions brought abundant rainfall in upper Thailand especially in the areas of the lower northeastern, central and eastern parts that obtained widespread rain during the middle of the period with heavy to very heavy rainfall in many areas. The heaviest daily rainfall was 170.9 millimeter at Khemarat in Ubon Ratchathani province on September 11. Flash flooding occurred at Chon Buri province on September 14, Si Sa Ket, Surin, Saraburi and Chanthaburi provinces on September 15, Saraburi and Trat provinces on September 16 and also at Rayong and Nakhon Nayok provinces on September 17. However, decreasing rainfall in most areas occurred during September 19-20, because of the disappearance of monsoon trough and the weakening of southwest monsoon. For southern Thailand, scattered to fairly widespread rain with isolated heavy to very heavy rainfall was observed along the east coast while widespread rain with heavy to very heavy rainfall in several places occurred along the west coast. The highest daily rainfall was 125.6 mm at Amphoe Mueang, Ranong province on September 17 with the report of flash flooding at Chumphon, Ranong Trang, Satun and Phyang-nga provinces on September 16.

21 – 30 September: Although the low pressure cell covering the eastern side of the northern and northeastern parts during early period, the monsoon trough moving to lie over Myanmar and Laos before migrating back to lie over the central, eastern and lower northeastern parts during late period coupled with the prevailing of the moderate southwest monsoon nearly the whole period. Under these influences, rainfall relatively decreased in upper Thailand with widely scattered to scattered rain and heavy to very heavy rainfall in some areas of the northern and northeastern parts whereas the central and eastern parts obtained scattered to fairly widespread rain with isolated heavy to very heavy rainfall during early and late period. The maximum daily rainfall was 166.0 millimeter at Phu Phiang in Nan province on September 22. In southern part, plentiful of rain was observed along the west coast during the middle of the period while scattered to fairly widespread rain occurred nearly the whole period along the east coast. The heaviest daily rainfall was 138.2 millimeter at Amphoe Mueang in Satun province on September 27.

-
- Note :**
- 1) Rainfall, temperatures and natural disasters in this report were updated up to October 2, 2015.
 - 2) “VAMCO” mean a river in southern Vietnam contributed by Vietnam.



Monthly Current Report
Rainfall and Accumulative Rainfall
September 2015

Northern Thailand

Station	Temperature (°c)		Rainfall (mm)		Accumulative rainfall (mm) Since 1 January	
	Mean	Above or below normal	Actual	Above or below normal	Actual	Above or below normal
Chiang Rai	27.2	1.0	153.8	-130.1	1226.4	-266.0
Mae Hong Son	28.1	1.1	79.7	-119.3	837.5	-285.1
Phayao	27.2	0.9	127.5	-76.1	706.3	-259.9
Chiang Mai	28.2	1.5	139.4	-72.0	654.5	-288.7
Tha Wang Pha	27.8	1.0	210.1	-1.4	1227.7	-58.4
Nan	28.1	0.9	188.6	-14.9	968.4	-168.7
Lamphun	28.0	1.1	176.6	-31.6	902.5	60.3
Lampang	28.3	1.3	154.9	-56.7	801.2	-109.5
Mae Sariang	27.4	0.9	100.3	-76.8	972.7	-18.2
Phrae	28.3	1.1	67.7	-124.0	743.6	-249.0
Uttaradit	29.1	1.1	93.9	-154.4	770.1	-458.8
Bhumibol Dam	28.7	1.2	167.5	-40.1	658.7	-128.4
Tak	29.0	1.3	175.2	-40.3	542.6	-259.6
Mae Sot	26.8	0.6	209.1	23.7	1438.7	102.8
Umphang	25.2	0.8	240.7	-6.9	1173.8	-101.4
Phitsanulok	28.6	0.5	151.5	-95.1	717.2	-392.8
Lom Sak	28.0	0.9	214.1	20.5	636.9	-299.3
Phetchabun	28.0	0.9	218.8	13.1	817.2	-206.4
Wichian Buri	28.3	0.4	259.9	13.8	1027.5	-36.9
Kamphaeng Phet	28.6	1.0	255.4	-13.4	808.9	-255.3
Over the area	27.9	0.9	169.2	-49.1 -22%	881.6	-184.1 -17%

Northeastern Thailand

Station	Temperature (°c)		Rainfall (mm)		Accumulative rainfall (mm) Since 1 January	
	Mean	Above or below normal	Actual	Above or below normal	Actual	Above or below normal
Nong Khai	28.5	1.1	408.8	151.6	1537.5	39.7
Loei	27.3	0.9	188.9	-46.1	784.8	-304.1
Udon Thani	28.2	0.6	237.8	-1.7	1030.9	-284.2
Nakhon Phanom	28.0	0.9	249.7	-40.5	2047.6	-187.7
Sakon Nakhon	28.0	0.8	121.3	-103.5	1318.2	-232.4
Mukdahan	28.4	1.2	134.9	-76.8	1018.8	-344.7
Khon Kaen	27.7	0.5	145.3	-86.7	923.5	-185.6
Kosum Phisai	28.3	0.6	150.9	-89.7	804.1	-327.0
Roi Et	28.3	0.8	126.5	-93.3	883.9	-333.5
Chaiyaphum	28.0	0.7	187.6	-42.4	745.2	-231.9
Ubon Ratchathani	28.5	1.1	210.7	-83.1	1087.7	-347.3
Tha Tum	28.5	0.8	217.7	-45.3	908.6	-331.0
Surin	28.2	0.9	258.5	3.1	1209.9	-63.5
Nakhon Ratchasima	28.2	0.8	284.2	55.9	1063.5	164.9
Chok Chai	28.0	0.7	274.8	63.2	846.5	-31.4
Nang Rong	27.7	0.5	324.6	85.0	985.6	-33.8
Over the area	28.1	0.8	220.1	-21.9 -9%	1074.8	-189.6 -15%

- NOTES :
- 1) Mean temperature is the average of daily dry-bulb temperature
 - 2) "T" is trace, rainfall amount less than 0.1 mm.
 - 3) "blank" is incomplete data.
 - 4) Temperature and rainfall are preliminary data.

Monthly Current Report
Rainfall and Accumulative Rainfall
September 2015

Central Thailand

Station	Temperature (°c)		Rainfall (mm)		Accumulative rainfall (mm) Since 1 January	
	Mean	Above or below normal	Actual	Above or below normal	Actual	Above or below normal
Nakhon Sawan	28.7	0.7	257.8	20.8	610.8	-353.5
Bua Chum	28.2	0.6	223.0	-28.7	772.6	-160.8
Lop Buri	28.5	0.5	296.9	31.4	786.9	-146.9
Suphan Buri	29.0	0.7	320.4	97.0	778.9	51.0
Thong Pha Phum	27.3	0.6	247.4	6.2	1334.4	-249.5
Kanchanaburi	29.0	1.0	246.3	25.8	689.6	-92.8
Bangkok Airport	28.9	0.5	404.6	119.7	985.2	-154.7
Bangkok Metropolis	28.9	0.6	352.4	18.1	1498.3	198.0
Over the area	28.6	0.7	293.6	36.3 14%	932.1	-113.6 -11%

Eastern Thailand

Station	Temperature (°c)		Rainfall (mm)		Accumulative rainfall (mm) Since 1 January	
	Mean	Above or below normal	Actual	Above or below normal	Actual	Above or below normal
Prachin Buri	28.8	0.7	190.6	-158.8	1442.8	-182.9
Kabin Buri	28.0	0.3	248.2	-55.1	1136.6	-272.7
Aranyaprathet	28.2	0.5	236.1	-16.2	827.4	-302.9
Chon Buri	29.2	0.9	315.8	46.9	819.1	-213.3
Ko Sichang	28.7	0.6	208.9	-60.3	603.4	-339.3
Pattaya	28.5	0.8	291.5	86.8	762.9	-51.3
Sattahip	28.5	0.4	448.3	229.3	804.8	-115.4
Rayong	28.5	0.3	407.3	152.1	1071.0	-61.1
Chanthaburi	27.8	0.6	517.4	19.8	2311.7	-323.6
Khlong Yai	27.4	0.5	910.8	229.8	3923.3	-450.2
Over the area	28.4	0.6	377.5	47.4 14%	1370.3	-231.4 -14%

- NOTES :
- 1) Mean temperature is the average of daily dry-bulb temperature
 - 2) "T" is trace, rainfall amount less than 0.1 mm.
 - 3) "blank" is incomplete data.
 - 4) Temperature and rainfall are preliminary data.

Monthly Current Report
Rainfall and Accumulative Rainfall
September 2015

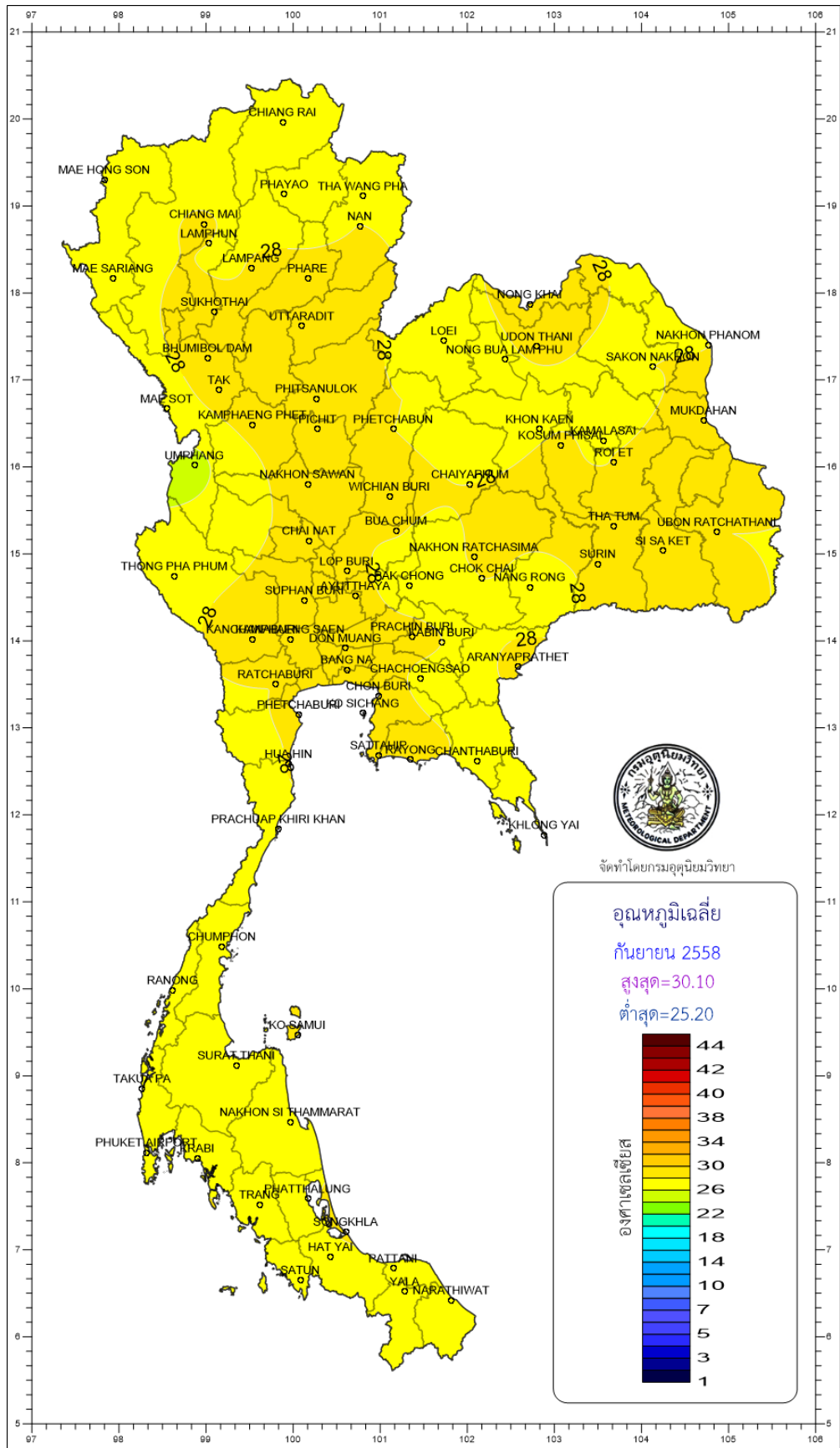
Southern Thailand, east coast

Station	Temperature (°c)		Rainfall (mm)		Accumulative rainfall (mm) Since 1 January	
	Mean	Above or below normal	Actual	Above or below normal	Actual	Above or below normal
Phetchaburi	28.7	0.5	164.1	10.5	535.8	-67.7
Hua Hin	28.3	0.3	189.4	69.0	502.2	-97.6
Prachuap Khiri Khan	27.7	0.0	212.0	112.5	723.7	29.2
Chumphon	27.3	0.4	223.7	45.4	1158.0	-51.9
Surat Thani	27.2	0.6	266.6	78.2	924.5	-1.8
Ko Samui	28.5	0.6	94.0	-27.7	554.9	-378.5
Nakhon Si Thammarat	27.4	0.1	145.3	-16.3	791.1	-319.5
Songkhla	28.4	0.5	75.3	-61.6	653.9	-165.1
Hat Yai Airport	27.1	0.2	130.0	-27.3	875.0	-38.7
Pattani Airport	27.9	0.7	103.5	-43.6	719.4	-144.6
Narathiwat	27.8	0.6	154.5	-28.2	991.6	-94.2
Over the area	27.8	0.4	159.9	10.1 7%	766.4	-121.1 -14%

Southern Thailand, west coast

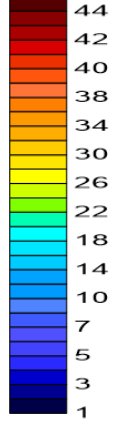
Station	Temperature (°c)		Rainfall (mm)		Accumulative rainfall (mm) Since 1 January	
	Mean	Above or below normal	Actual	Above or below normal	Actual	Above or below normal
Ranong	26.7	0.3	939.8	293.3	3382.9	-63.2
Takua Pa	26.7	0.0	717.3	121.8	2866.0	28.8
Phuket	27.6	0.1	572.8	211.6	2042.9	393.3
Phuket Airport	27.8	0.5	473.8	74.7	2157.3	310.9
Ko Lanta	28.2	0.6	347.6	17.3	1808.8	160.3
Trang Airport	27.3	0.7	439.0	133.9	1764.7	231.0
Satun	27.4	0.5	587.9	259.5	2063.9	433.8
Over the area	27.4	0.4	582.6	158.9 38%	2298.1	213.6 10%

- NOTES :
- 1) Mean temperature is the average of daily dry-bulb temperature
 - 2) "T" is trace, rainfall amount less than 0.1 mm.
 - 3) "blank" is incomplete data.
 - 4) Temperature and rainfall are preliminary data.

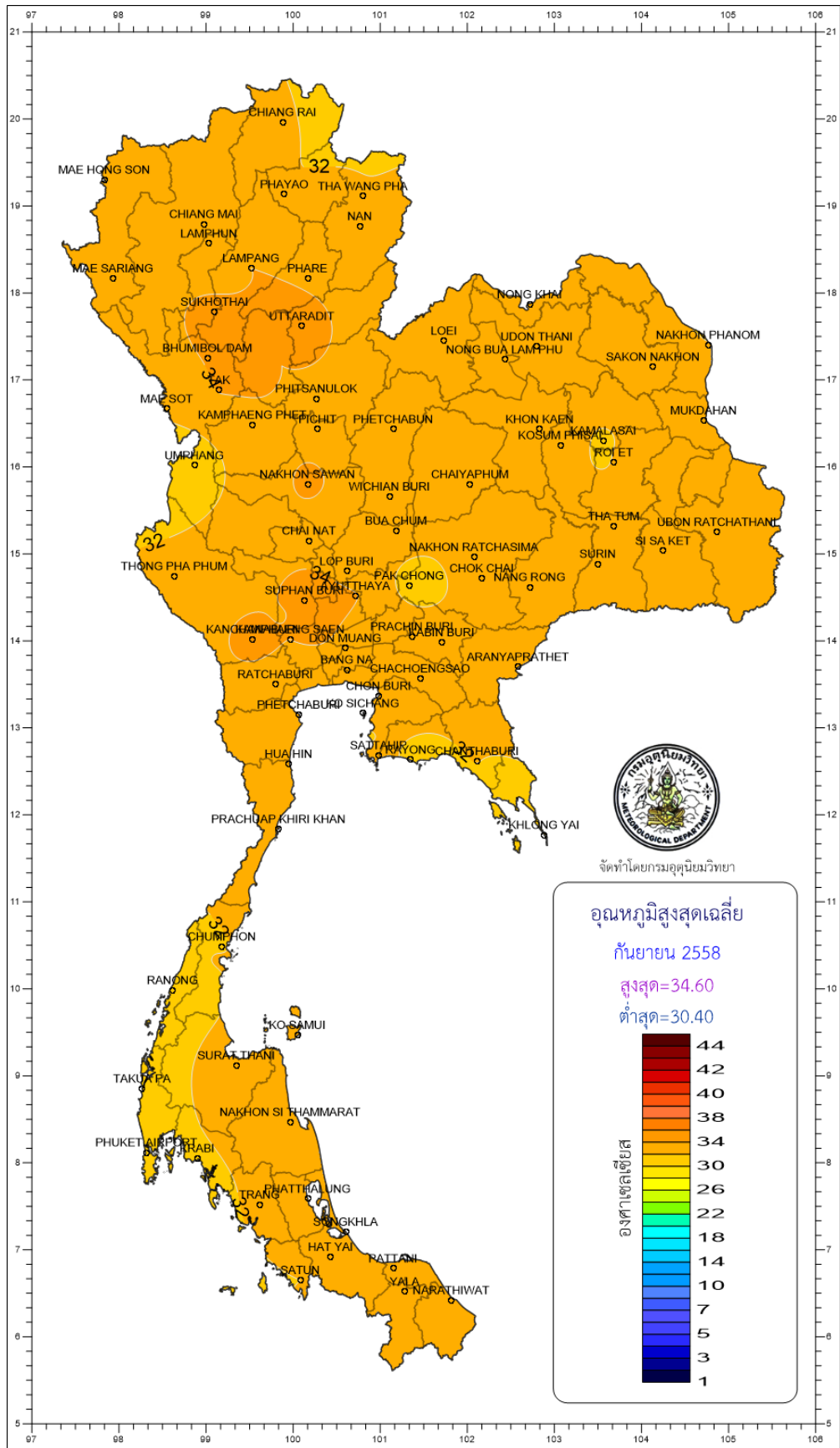


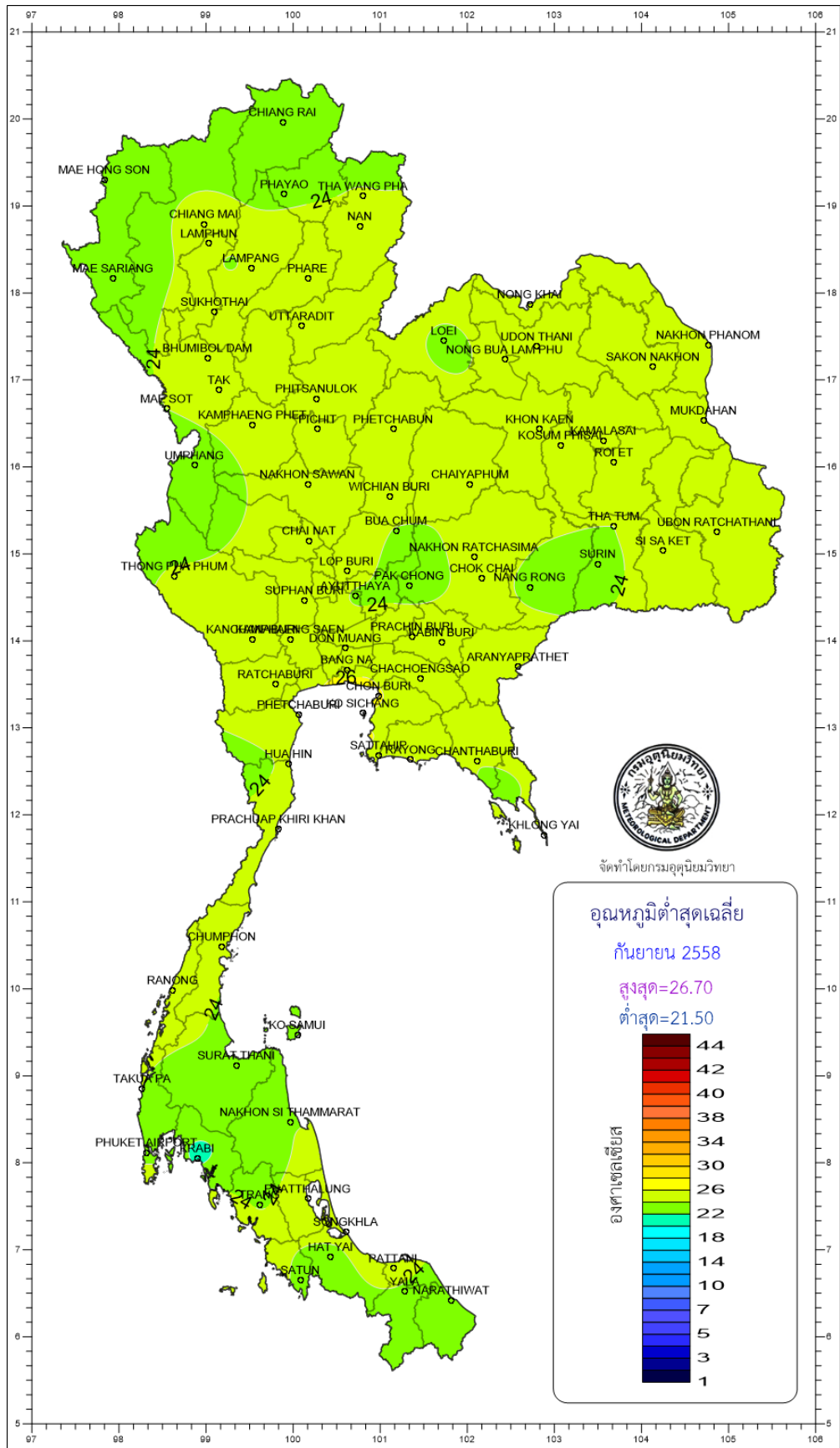
จัดทำโดยกรมอุตุนิยมวิทยา

อุณหภูมิเฉลี่ย
 กันยายน 2558
 สูงสุด=30.10
 ต่ำสุด=25.20



องค์การอุตุนิยมวิทยา





จัดทำโดยกรมอุตุนิยมวิทยา

