

# Monthly Weather Summary in Thailand

## September 2012

The weather was mainly influenced by the active monsoon trough which lay across upper Thailand almost the whole month and the moderate to rather active southwest monsoon prevailed over the Andaman Sea, Thailand and the Gulf of Thailand, bringing wet condition and periods of heavy rain on many days especially in central and eastern parts. In addition with a ridge of high pressure area from China reached upper Thailand during mid month causing the monsoon trough strengthened and moved southward to lie over the central, eastern and lower northeastern parts. In late September, the active monsoon trough shifted southward to lie over the central, eastern and upper southern parts to the tropical depression in the middle South China Sea. The total rainfall over Thailand was 20 percent higher than normal with above normal in most parts of Thailand i.e. northern part 32.3 mm (15%), central part 144.9 mm (56%), eastern part 179.8 mm (54%) and southern part (west coast) 129.6 mm (29%) except for below normal in northeastern part 50.2 mm (21%) and southern part (east coast) 11.3 mm (8%). Mean temperatures were above normal in northern part, northeastern part and southern part (east coast). For the rest areas of the country mean temperature were considered to be normal.

**1 – 10 September:** Under the influences of the intense monsoon trough associated with the active low pressure cell during mid period and the moderate to rather active southwest monsoon, abundant rainfall was observed in upper Thailand throughout this period with isolated heavy to very heavy rainfall in some areas. The maximum daily rainfall of 150.0 mm was reported at Phu Kradung Nation Park in Loei province on September 8 and flash flooding at Nan, Phitsanulok, Lampang, Phichit, Chiang Mai, Phetchabun, Mae Hong Son, Lamphun, Chiang Rai, Kamphaeng Phet, Uttaradit, Sukhothai, Loei, Suphan Buri, Nakhon Sawan, Chai Nat, Saraburi, Nonthaburi, Bangkok and Sa kaeo provinces during the second half of the period. The river overflowed its bank at Phra Nakhon Si Ayutthaya province on September 9. In southern Thailand, widely scattered rain and heavy rainfall occurred in some areas mainly in upper portion during early period then rainfall was relatively increased with scattered to fairly widespread rain and heavy rainfall in several areas and very heavy rainfall in some areas especially in mid period. The highest amount of rainfall was 208.0 mm with flash flood at Ranong province on September 5.

**11 – 20 September:** The moderate monsoon trough lay over upper Thailand during early period after that the high pressure area from China extend its ridge to cover upper Thailand causing the monsoon trough was intensified and moved southwards to lie across the central, eastern and lower northeastern parts. In addition, the moderate to active southwest monsoon prevailed over the Andaman Sea, Thailand and The Gulf of Thailand almost the whole period. These reduced rainfalls in northern and northeastern parts while abundant rainfall still occurred in central and eastern parts with heavy rainfall in several areas and very heavy rainfall in some areas especially during mid and late periods. The maximum daily rainfall of 190.8 mm was at Nong Khaem District Office, Khet Nong Khaem in Bangkok Metropolis on September 14. Flash floods occurred at Uttaradit, Lampang and Phrae provinces on September 15 and Sa Kaeo province on September 18, overflowing river at Ang Thong province on September 11, at Phayao, Nakhon Pathom and Prachin Buri provinces on September 15, at Sukhothai province on September 16 and Pathum Thani province on September 19. Trat, Chonburi, Rayong and Bangkok experienced flashflood in mid period as well. In southern Thailand, widespread rain almost the whole period with heavy rainfall in several areas and very heavy rainfall in some areas particular along the west coast in the first half of the period. There was heaviest daily rainfall of 93.8 mm at Amphoe Muang in Ranong province on September 13.

**21 – 30 September:** The monsoon through has weaken during the first half of the period after that it strengthen and shifted southward to lie across Central, Eastern and upper southern parts towards tropical depression in the South China Sea on the last day of the period coupled with more active southwest monsoon since mid period. These caused widely scattered to scattered rain in northern and northeastern parts almost the whole period with heavy to very heavy rainfall in some areas. Abundant rainfalls continuously occurred in central and eastern parts. The maximum daily rainfall of 144.5 mm was at Nong Chok District Office, Khet Nong Chok in Bangkok Metropolis on September 27. There were reports of flash flood at Prachin Buri province on September 23, Kanchanaburi, Ratchaburi, Prachin Buri and Rayong provinces on September 29. Gusty winds occurred at Chai Nat and Chanthaburi provinces on September 26. For southern Thailand, scattered to fairly widespread rain and isolated heavy to very heavy rainfall mainly in the area of west coast. The maximum daily rainfall was 140.0 mm and flash flooding at Amphoe Mueang, Phuket province on September 26. Flash floods also occurred at Krabi and Phang-nga provinces and gusty wind at Trang province on September 27.

\*\*\*\*\*

**Note :** Rainfall, temperatures and natural disasters in this report were updated up to October 2, 2012.

Climatological Center

Meteorological Development Bureau

Meteorological Department

Monthly Current Report  
Rainfall and Accumulative Rainfall  
September 2012

Northern Thailand

Station	Temperature ( °c)		Rainfall (mm)		Accumulative rainfall (mm) Since 1 January	
	Mean	Above or below normal	Actual	Above or below normal	Actual	Above or below normal
Chiang Rai	26.5	0.6	165.5	-105.7	1643.4	147.0
Mae Hong Son	27.6	0.9	158.8	-45.9	1404.9	289.0
Phayao	26.6	0.2	311.3	117.8	924.9	-2.5
Chiang Mai	27.7	1.1	179.6	-22.8	838.5	-109.4
Tha Wang Pha	27.4	0.6	124.6	-58.4	1060.8	-219.2
Nan	27.7	0.7	169.5	-27.0	1088.1	-43.4
Lamphun	27.3	0.4	237.7	46.4	811.3	14.7
Lampang	27.4	0.6	236.4	26.1	1103.6	191.9
Mae Sariang	27.3	0.7	139.1	-37.8	1082.8	79.6
Phrae	27.7	0.7	277.3	91.9	1264.1	301.3
Uttaradit	28.5	0.6	274.0	10.5	1391.6	131.7
Bhumibol Dam	27.6	0.1	362.3	143.7	816.8	43.3
Tak	28.1	0.7	243.2	34.3	903.2	119.3
Mae Sot	27.0	1.0	163.2	3.3	1832.5	564.9
Umphang	24.9	0.6	394.1	146.1	1616.0	377.5
Phitsanulok	28.0	-0.1	381.8	151.2	1155.3	18.9
Lom Sak	27.8	0.7	184.2	-4.0	862.4	-83.6
Phetchabun	27.8	0.7	266.4	65.6	997.2	22.1
Wichian Buri	28.1	0.3	241.5	-2.8	992.1	-72.6
Kamphaeng Phet	27.9	0.2	381.5	113.0	1149.5	115.4
Over the area	27.4	0.5	244.6	32.3 15%	1147.0	94.5 9%

Northeastern Thailand

Station	Temperature ( °c)		Rainfall (mm)		Accumulative rainfall (mm) Since 1 January	
	Mean	Above or below normal	Actual	Above or below normal	Actual	Above or below normal
Nong Khai	28.6	1.3	144.8	-90.6	1360.8	-79.8
Loei	27.2	0.9	208.8	-11.1	987.0	-111.1
Udon Thani	28.2	0.7	117.6	-106.7	806.9	-490.4
Nakhon Phanom	27.8	0.8	90.3	-186.2	1997.4	-163.1
Sakon Nakhon	27.7	0.5	163.8	-47.5	1706.1	192.1
Mukdahan	28.1	0.8	90.0	-145.5	998.3	-402.1
Khon Kaen	27.5	0.4	134.8	-101.3	970.0	-110.5
Kosum Phisai	28.2	0.6	190.1	-37.4	1379.0	290.6
Roi Et	27.7	0.3	201.4	-48.2	1087.0	-146.6
Chaiyaphum	27.5	0.3	290.8	61.5	995.8	31.6
Ubon Ratchathani	27.6	0.4	428.3	138.6	1493.0	43.6
Tha Tum	28.3	0.7	178.0	-98.3	1163.7	-79.0
Surin	27.4	0.2	169.5	-89.7	929.6	-259.9
Nakhon Ratchasima	27.4	0.2	149.0	-77.6	843.2	-20.3
Chok Chai	27.4	0.3	161.1	-70.0	763.4	-138.6
Nang Rong	27.1	-0.1	348.4	107.0	1123.1	107.8
Over the area	27.7	0.5	191.7	-50.2 -21%	1162.8	-83.6 -7%

- NOTES :
- 1) Mean temperature is the average of daily dry-bulb temperature
  - 2) "T" is trace, rainfall amount less than 0.1 mm.
  - 3) "blank" is incomplete data.
  - 4) Temperature and rainfall are preliminary data.

Monthly Current Report  
Rainfall and Accumulative Rainfall  
September 2012

Central Thailand

Station	Temperature ( °c)		Rainfall (mm)		Accumulative rainfall (mm) Since 1 January	
	Mean	Above or below normal	Actual	Above or below normal	Actual	Above or below normal
Nakhon Sawan	28.1	0.2	318.3	100.1	894.5	-14.9
Bua Chum	27.7	0.2	234.6	-28.5	1065.2	119.0
Lop Buri	28.0	0.2	300.1	36.4	931.2	-2.2
Suphan Buri	28.1	0.0	411.8	157.9	941.1	142.0
Thong Pha Phum	26.7	0.1	489.7	247.2	2024.9	465.5
Kanchanaburi	28.0	0.1	442.7	214.9	906.4	129.3
Bangkok Airport	28.3	0.2	449.1	175.7	1332.6	322.8
Bangkok Metropolis	27.8	-0.2	601.1	255.8	1430.1	206.8
Over the area	27.8	0.1	405.9	144.9 56%	1190.8	171.1 17%

Eastern Thailand

Station	Temperature ( °c)		Rainfall (mm)		Accumulative rainfall (mm) Since 1 January	
	Mean	Above or below normal	Actual	Above or below normal	Actual	Above or below normal
Prachin Buri	28.1	0.1	447.6	91.9	1735.2	62.8
Kabin Buri	27.2	-0.4	417.6	114.4	1596.9	132.4
Aranyaprathet	27.7	0.4	482.0	223.8	1189.1	33.9
Chon Buri	28.4	0.5	347.7	66.0	1012.8	-13.1
Ko Sichang	27.8	-0.1	451.7	162.3	1083.0	135.1
Pattaya	27.4	-0.2	430.9	216.2	894.7	101.8
Sattahip	27.7	-0.1	357.1	125.7	1096.2	179.7
Rayong	27.5	-0.5	504.7	241.6	1311.5	185.2
Chanthaburi	27.0	0.1	379.5	-120.6	2247.9	-263.0
Khlong Yai	26.4	-0.5	1311.0	676.4	4847.9	573.4
Over the area	27.5	-0.1	513.0	179.8 54%	1701.5	112.7 7%

- NOTES :
- 1) Mean temperature is the average of daily dry-bulb temperature
  - 2) "T" is trace, rainfall amount less than 0.1 mm.
  - 3) "blank" is incomplete data.
  - 4) Temperature and rainfall are preliminary data.

Monthly Current Report  
Rainfall and Accumulative Rainfall  
September 2012

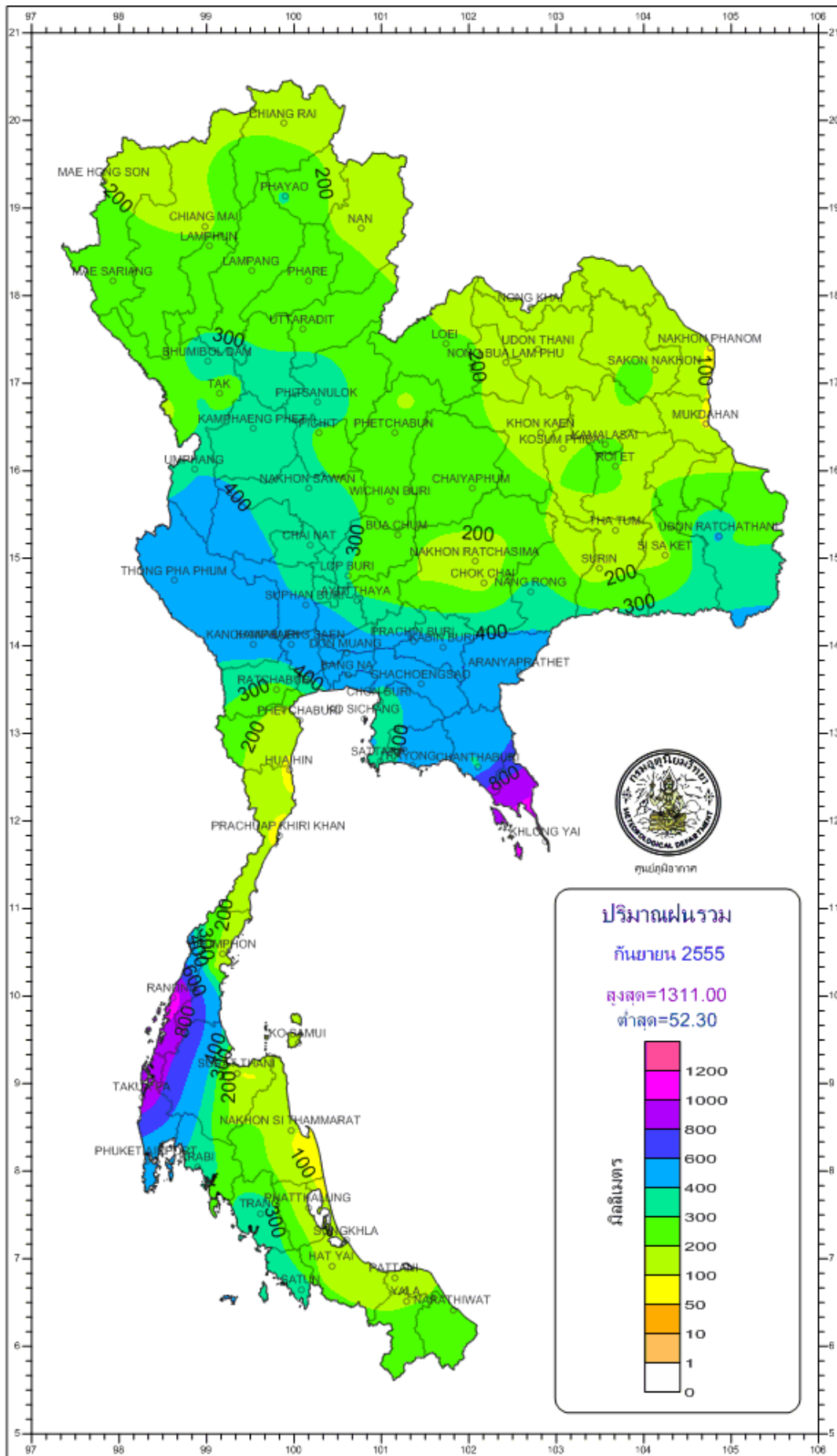
Southern Thailand, east coast

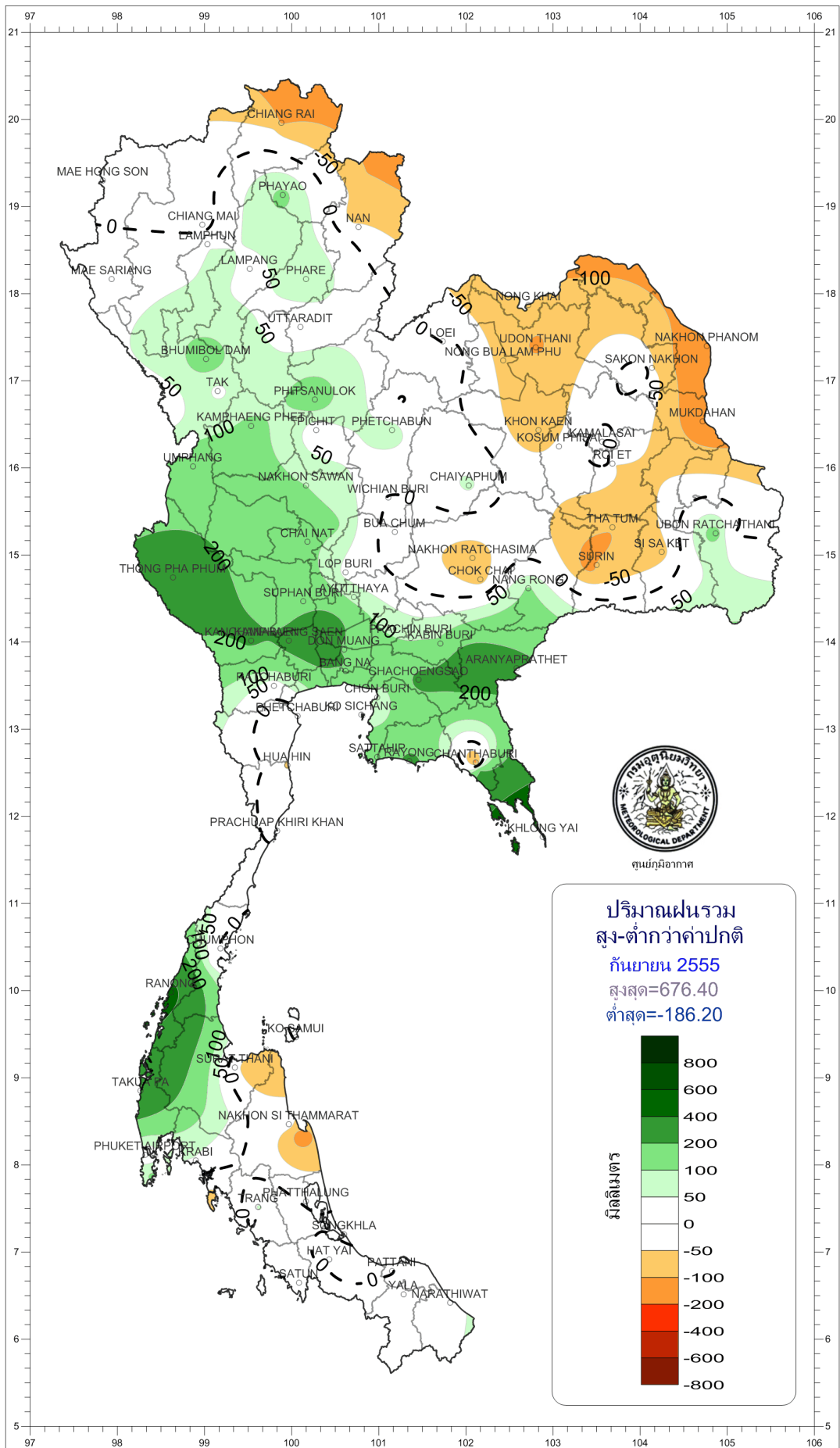
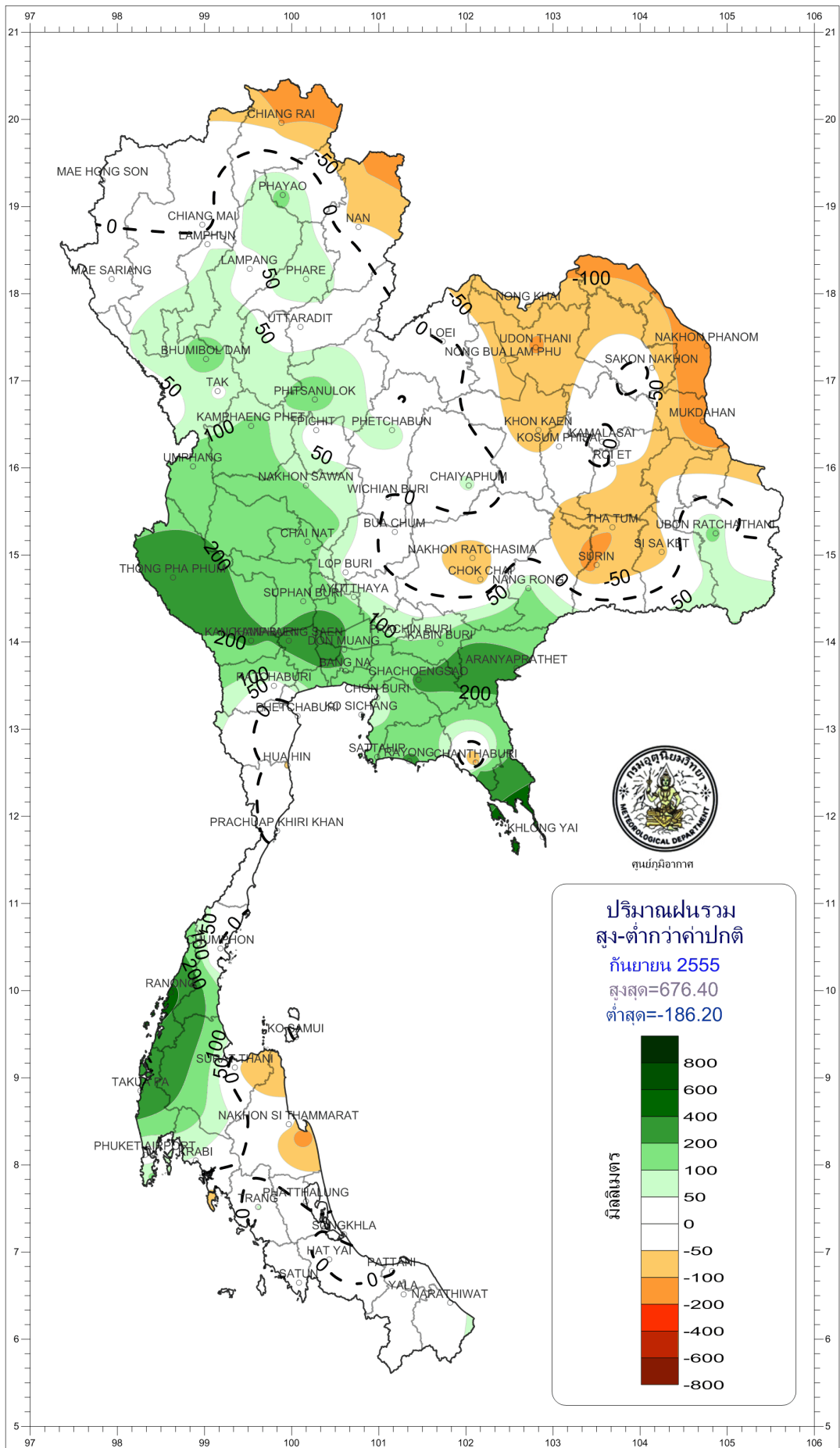
Station	Temperature ( °c)		Rainfall (mm)		Accumulative rainfall (mm) Since 1 January	
	Mean	Above or below normal	Actual	Above or below normal	Actual	Above or below normal
Phetchaburi	28.1	0.0	123.1	-33.6	705.5	124.6
Hua Hin	27.8	0.0	63.7	-58.0	547.1	-28.0
Prachuap Khiri Khan	27.8	0.3	82.2	-6.2	605.4	-53.8
Chumphon	26.8	0.0	158.4	-9.6	1190.1	-2.5
Surat Thani	26.9	0.4	101.2	-36.8	1261.6	423.0
Ko Samui	28.1	0.4	123.5	6.5	990.4	49.1
Nakhon Si Thammarat	27.4	0.3	133.5	-26.6	1699.1	665.6
Songkhla	27.9	-0.1	151.5	21.5	1256.8	501.7
Hat Yai Airport	27.0	0.3	141.0	-18.4	900.4	14.7
Pattani Airport	27.3	0.3	149.4	-1.9	1129.1	286.6
Narathiwat	27.1	-0.1	227.9	39.0	1543.1	485.2
Over the area	27.5	0.2	132.3	-11.3 -8%	1075.3	224.1 26%

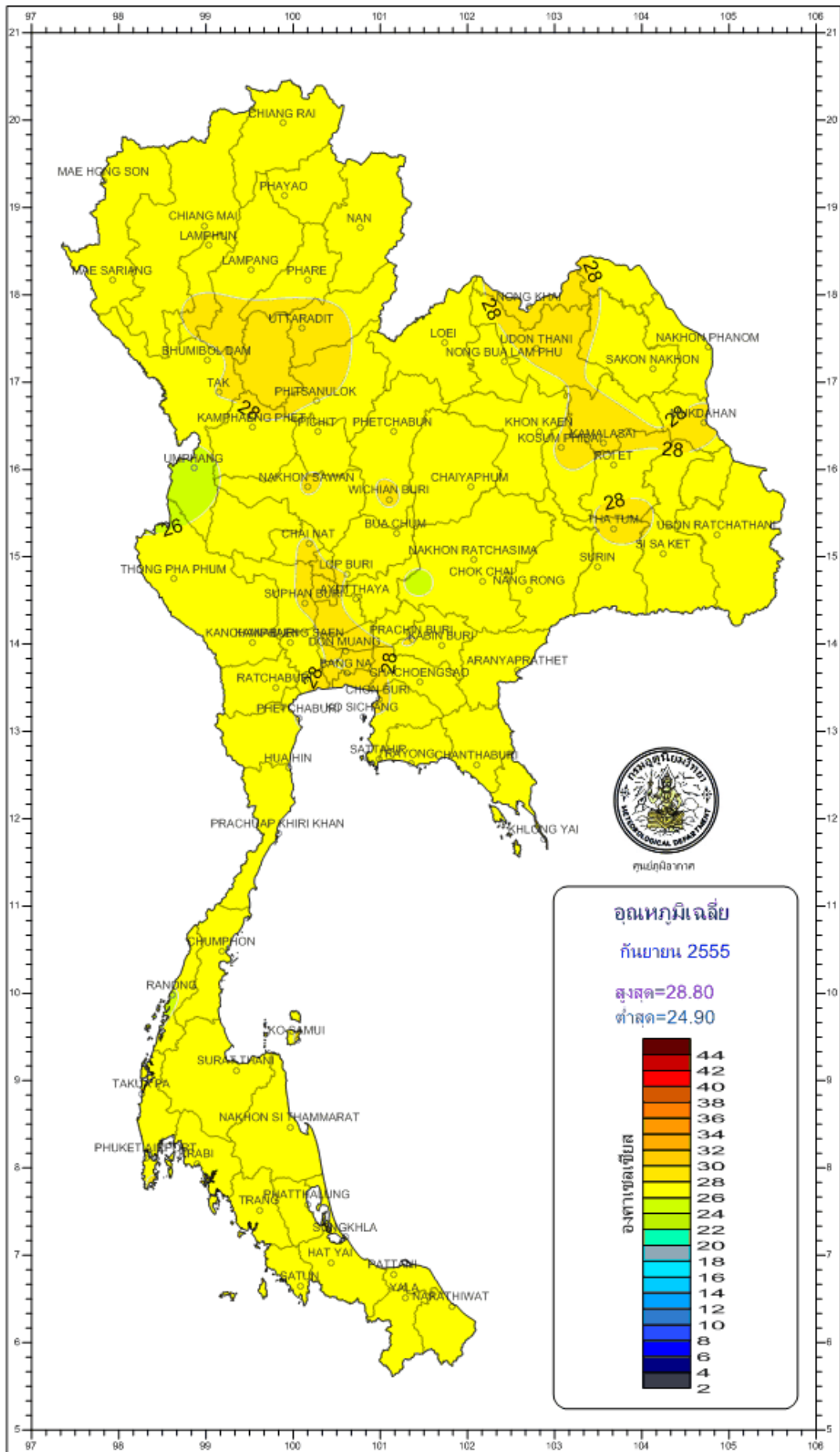
Southern Thailand, west coast

Station	Temperature ( °c)		Rainfall (mm)		Accumulative rainfall (mm) Since 1 January	
	Mean	Above or below normal	Actual	Above or below normal	Actual	Above or below normal
Ranong	25.9	-0.3	1126.1	464.8	5064.0	1568.5
Takua Pa	26.1	-0.5	954.9	356.7	3913.6	1112.3
Phuket	28.1	0.8	493.8	111.0	2334.5	601.5
Phuket Airport	27.4	0.3	410.5	1.6	2585.5	718.1
Ko Lanta	27.4	-0.1	244.1	-107.2	1954.9	306.8
Trang Airport	26.7	0.2	385.0	54.8	2016.7	419.4
Satun	27.0	0.2	374.3	25.9	1988.6	325.8
Over the area	26.9	0.0	569.8	129.6 29%	2836.8	721.8 34%

- NOTES :
- 1) Mean temperature is the average of daily dry-bulb temperature
  - 2) "T" is trace, rainfall amount less than 0.1 mm.
  - 3) "blank" is incomplete data.
  - 4) Temperature and rainfall are preliminary data.







กรมอุตุนิยมวิทยา



