

Monthly Weather Summary in Thailand September 2017

Thailand's weather in September 2017 was dominated by the monsoon trough which lay across the upper northern, Myanmar and upper Laos during early month and moved southwards to lie over the northern, central, eastern and northeastern parts during late month coupled with the prevailing of active southwest monsoon over the Andaman Sea, southern part and the Gulf of Thailand during the middle and the end of the month. These conditions brought intermittent abundant rainfall over Thailand especially plentiful of rain in most regions of Thailand with heavy to very heavy rainfall in several areas mainly in the northern and northeastern parts with flash flooding in some places during September 14-17 associated with typhoon "DOKSURI" (1719) entering Thailand at Bueng Kan province in the evening of September 15 as the tropical storm and heading to Laos before downgraded into the tropical depression entering Thailand again at Nan province in the morning on the next day. It moved pass upper northern Thailand and later downgraded into the active low pressure cell covering the coastal areas of Myanmar and upper Bay of Bengal on September 17. For southern Thailand, with the prevailing of the southwest monsoon throughout the month, abundant rainfall was observed nearly the whole month especially along the west coast. However, with the weakening of the southwest monsoon and periodic shift of the monsoon trough northwards to lie over Myanmar, Laos and upper Vietnam and sometime disappeared, less rainfall was observed in majority areas during that time. Monthly rainfall was below normal in most parts of Thailand i.e. northern part 24.0 mm (11%), northeastern part 27.5 mm (11%), central part 58.8 mm (23%) and eastern part 54.5 mm (17%) except for above normal in southern part (east coast) 16.8 mm (11%) and southern part (west coast) 173.7 mm (4%). The average total rainfall over Thailand in this month was 3 percent lower than normal. The accumulative rainfall this year up to September was 28 percent higher than normal. Mean temperatures were above normal in all parts.

1 – 10 September: The monsoon trough lay across Myanmar, Laos and upper Vietnam during early period then shifted southwards to lie over upper northern, Laos and upper Vietnam for few days before moving back to lie over Myanmar, Laos and upper Vietnam during late period accompanied with the weak southwest monsoon blowing across the Andaman Sea and the Gulf of Thailand during the middle and the end of the period. These resulted in isolated to scattered rainfall over upper Thailand except for fairly widespread to widespread rain with heavy to very heavy rainfall in some areas during mid-period. The highest daily rainfall was 120.0 millimeter at Mueang in Bueng Kan province on September 3 and at Wang Chin in Phrae province on September 5. In southern Thailand, scattered rain was found along the east coast nearly the whole period with heavy to very heavy rainfall in some areas while scattered to fairly widespread rain occurred along the west coast during early and middle period then increasing in rainfall to widespread rain with heavy rainfall in some areas. The maximum daily rainfall of 130.8 millimeter was measured at Su-ngai Kolok in Narathiwat province on September 10.

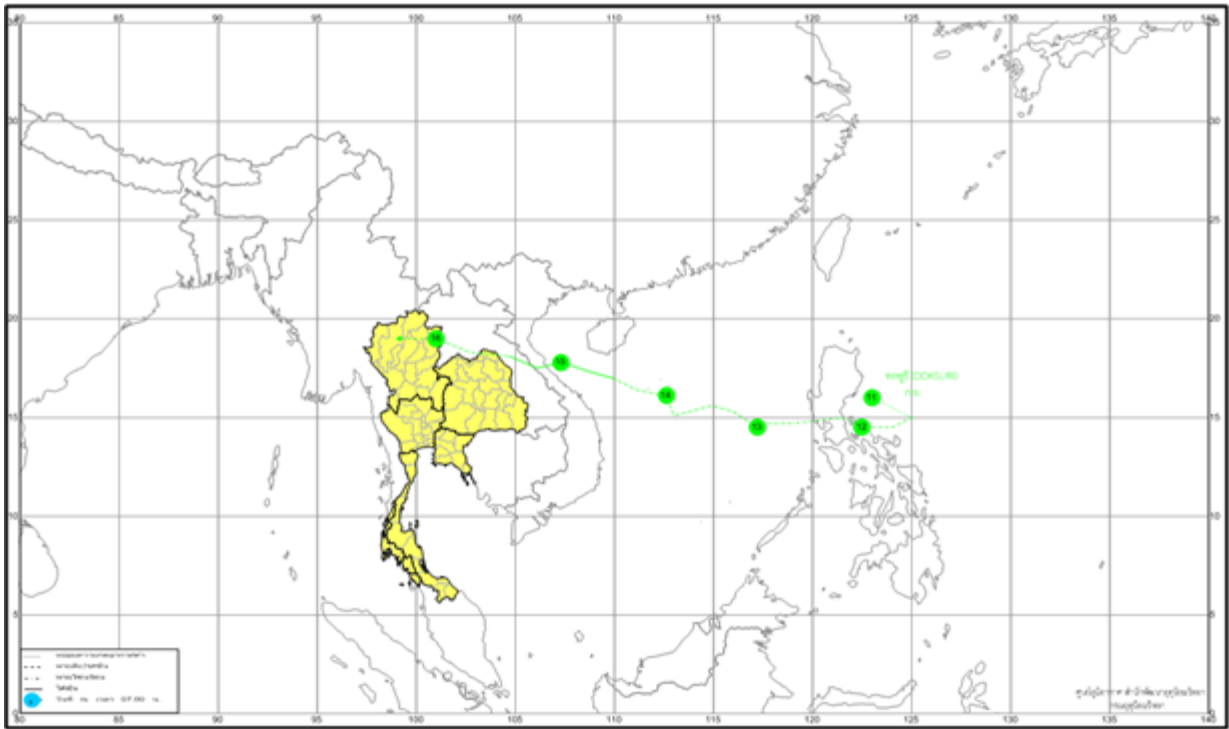
11 – 20 September: Both amount and distribution of rain in Thailand was mainly observed during middle period with widespread rain in upper Thailand and heavy to very heavy rainfall in many areas of the northern and northeastern parts affected by typhoon "DOKSURI" in the upper South China Sea that made landfall at southern of Vinh in Vietnam at 10.00 a.m. on September 15 then moving

across Laos and weakening into the tropical storm before entering Thailand at Bueng Kan province at 10 p.m. on the same day. It later moved through Laos and downgraded into tropical depression and moved further into Nan province in the morning of September 16. After weakening into the active low pressure cell, the remnant of “DOKSURI” persisted in western side of northern Thailand before moved to covering the coastal Myanmar and upper Bay of Bengal on the following day coupled with more active southwest monsoon during mid-period. The heaviest daily rainfall in upper Thailand was 235.0 millimeter at Kuchinarai Self-Help Settlement in Kalasin province on September 15. Floods were reported at Kalasin provinces on September 15, and at Phrae, Phitsanulok and Phetchabun provinces on September 16 and also at Lampang, Chiang Rai and Chaiyaphum provinces on September 17. During the early and late period, the weak monsoon trough lay over upper Thailand and sometime disappearance causing isolated to scattered rain with heavy to heavy rainfall in some areas in upper Thailand. Southern Thailand experienced plentiful of rain nearly the whole period with heavy to very heavy rainfall in some places during mid-period mainly along the west coast. The highest daily rainfall was 152.9 mm at Takua Pa in Phang - nga province on September 15 with the report of flooding at Satun province on the same day.

21 – 30 September: The monsoon trough lay across lower central, upper southern and eastern parts during early period and shifting northwards to lie across lower northern, upper central and upper northeastern parts towards the active low pressure cell in the Gulf of Tonkin on September 25 and downgraded before moving back to lie across lower central, eastern and lower northeastern parts during late period coupled with the prevailing of the southwest monsoon which strengthened during the first half of the period. These conditions brought abundant rainfall over Thailand nearly the whole period. The maximum daily rainfall in upper Thailand was 119.4 millimeter at Tha Mai in Chanthaburi province on September 24 with flash flooding at Mae Hong Son province on the same day and the occurrence of thunderstorm at Phrae and Lampang provinces on September 29. In southern part, plentiful of rain was observed nearly the whole period with heavy to very heavy rainfall in some areas. The heaviest daily rainfall was 192.6 millimeter at Mueang in Satun province on September 21 with flooding at Phuket and Krabi provinces on September 21 and at Trang and Staun provinces on September 29.

-
- Note :**
- 1) Rainfall, temperatures and natural disasters in this report were updated up to October 5, 2017.
 - 2) “DOKSURI” mean eagle in Korean contributed by Republic of Korea.

Climatological Center
Meteorological Development Bureau
Meteorological Department



Track of tropical storm entering Thailand in September 2017

Monthly Current Report
Rainfall and Accumulative Rainfall
September 2017

Northern Thailand

Station	Temperature (°c)		Rainfall (mm)		Accumulative rainfall (mm) Since 1 January	
	Mean	Above or below normal	Actual	Above or below normal	Actual	Above or below normal
Chiang Rai	27.0	0.8	266.1	-17.8	1925.5	433.1
Mae Hong Son	27.6	0.6	257.3	58.3	949.6	-173.0
Phayao	27.0	0.7	153.3	-50.3	1059.0	92.8
Chiang Mai	27.9	1.2	124.1	-87.3	1187.5	244.3
Tha Wang Pha	27.9	1.1	139.6	-71.9	1301.2	15.1
Nan	27.8	0.6	316.4	112.9	1133.0	-4.1
Lamphun	27.8	0.9	164.1	-44.1	1203.6	361.4
Lampang	27.7	0.7	199.9	-11.7	1306.1	395.4
Mae Sariang	27.3	0.8	189.5	12.4	1014.8	23.9
Phrae	28.0	0.8	300.6	108.9	1306.2	313.6
Uttaradit	28.8	0.8	282.4	34.1	1388.4	159.5
Bhumibol Dam	28.2	0.7	209.0	1.4	1021.3	234.2
Tak	28.8	1.1	218.8	3.3	906.3	104.1
Mae Sot	27.4	1.2	77.4	-108.0	923.4	-412.5
Umphang	25.7	1.3	125.7	-121.9	1211.1	-64.1
Phitsanulok	29.0	0.9	303.5	56.9	1459.4	349.4
Lom Sak	28.1	1.0	144.0	-49.6	1037.9	101.7
Phetchabun	28.3	1.2	98.1	-107.6	1237.6	214.0
Wichian Buri	29.0	1.1	155.3	-90.8	1212.5	148.1
Kamphaeng Phet	28.8	1.2	160.0	-108.8	1640.4	576.2
Over the area	27.9	0.9	194.3	-24.0 -11%	1221.2	155.5 15%

Northeastern Thailand

Station	Temperature (°c)		Rainfall (mm)		Accumulative rainfall (mm) Since 1 January	
	Mean	Above or below normal	Actual	Above or below normal	Actual	Above or below normal
Nong Khai	28.4	1.0	203.6	-53.6	1893.0	395.2
Loei	27.7	1.3	112.7	-122.3	1357.1	268.2
Udon Thani	28.4	0.8	283.3	43.8	1647.5	332.4
Nakhon Phanom	28.0	0.9	401.3	111.1	2508.1	272.8
Sakon Nakhon	28.1	0.9	203.4	-21.4	2303.8	753.2
Mukdahan	28.4	1.2	304.9	93.2	2015.9	652.4
Khon Kaen	28.1	0.9	114.0	-118.0	1205.3	96.2
Kosum Phisai	28.8	1.1	194.7	-45.9	1542.9	411.8
Roi Et	28.6	1.1	340.3	120.5	1588.0	370.6
Chaiyaphum	28.4	1.1	138.1	-91.9	1087.8	110.7
Ubon Ratchathani	28.9	1.5	152.9	-140.9	1681.5	246.5
Tha Tum	28.5	0.8	189.8	-73.2	1167.5	-72.1
Surin	28.4	1.1	152.8	-102.6	1367.2	93.8
Nakhon Ratchasima	28.4	1.0	451.0	222.7	1690.0	791.4
Chok Chai	28.6	1.3	48.2	-163.4	901.6	23.7
Nang Rong	28.2	1.0	141.4	-98.2	1141.2	121.8
Over the area	28.4	1.1	214.5	-27.5 -11%	1568.7	304.3 24%

- NOTES :
- 1) Mean temperature is the average of daily dry-bulb temperature
 - 2) "T" is trace, rainfall amount less than 0.1 mm.
 - 3) "blank" is incomplete data.
 - 4) Temperature and rainfall are preliminary data.

Monthly Current Report
Rainfall and Accumulative Rainfall
September 2017

Central Thailand

Station	Temperature (°c)		Rainfall (mm)		Accumulative rainfall (mm) Since 1 January	
	Mean	Above or below normal	Actual	Above or below normal	Actual	Above or below normal
Nakhon Sawan	29.1	1.1	187.0	-50.0	1470.4	506.1
Bua Chum	28.6	1.0	100.1	-151.6	1057.1	123.7
Lop Buri	29.1	1.1	160.0	-105.5	1089.6	155.8
Suphan Buri	29.7	1.4	55.9	-167.5	995.4	267.5
Thong Pha Phum	27.8	1.1	214.4	-26.8	1323.5	-260.4
Kanchanaburi	29.4	1.4	170.4	-50.1	951.2	168.8
Bangkok Airport	29.2	0.8	255.2	-29.7	1525.8	385.9
Bangkok Metropolis	29.3	1.0	444.8	110.5	2010.5	710.2
Over the area	29.0	1.1	198.5	-58.8 -23%	1302.9	257.2 25%

Eastern Thailand

Station	Temperature (°c)		Rainfall (mm)		Accumulative rainfall (mm) Since 1 January	
	Mean	Above or below normal	Actual	Above or below normal	Actual	Above or below normal
Prachin Buri	29.5	1.4	219.0	-130.4	1684.1	58.4
Kabin Buri	28.3	0.6	186.1	-117.2	1801.0	391.7
Aranyaprathet	28.7	1.0	132.2	-120.1	1316.7	186.4
Chon Buri	29.7	1.4	131.3	-137.6	1226.0	193.6
Ko Sichang	29.0	0.9	192.3	-76.9	963.1	20.4
Pattaya	28.8	1.1	140.8	-63.9	860.3	46.1
Sattahip	28.5	0.4	290.7	71.7	1206.7	286.5
Rayong	28.9	0.7	209.2	-46.0	1326.3	194.2
Chanthaburi	28.3	1.1	576.9	79.3	3419.6	784.3
Khlong Yai	27.6	0.7	677.0	-4.0	4173.8	-199.7
Over the area	28.7	0.9	275.6	-54.5 -17%	1797.8	196.1 12%

- NOTES :
- 1) Mean temperature is the average of daily dry-bulb temperature
 - 2) "T" is trace, rainfall amount less than 0.1 mm.
 - 3) "blank" is incomplete data.
 - 4) Temperature and rainfall are preliminary data.

Monthly Current Report
Rainfall and Accumulative Rainfall
September 2017

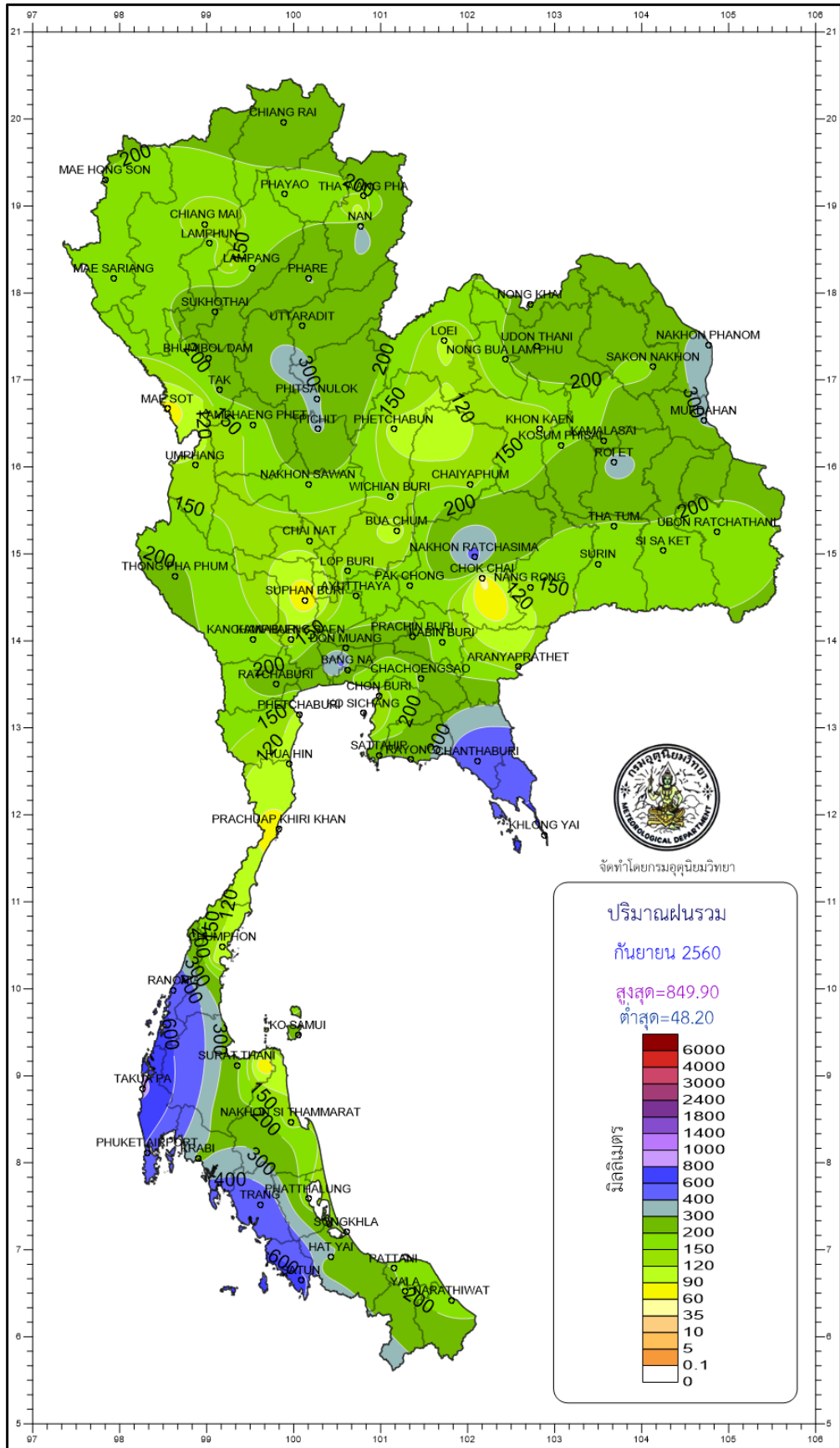
Southern Thailand, east coast

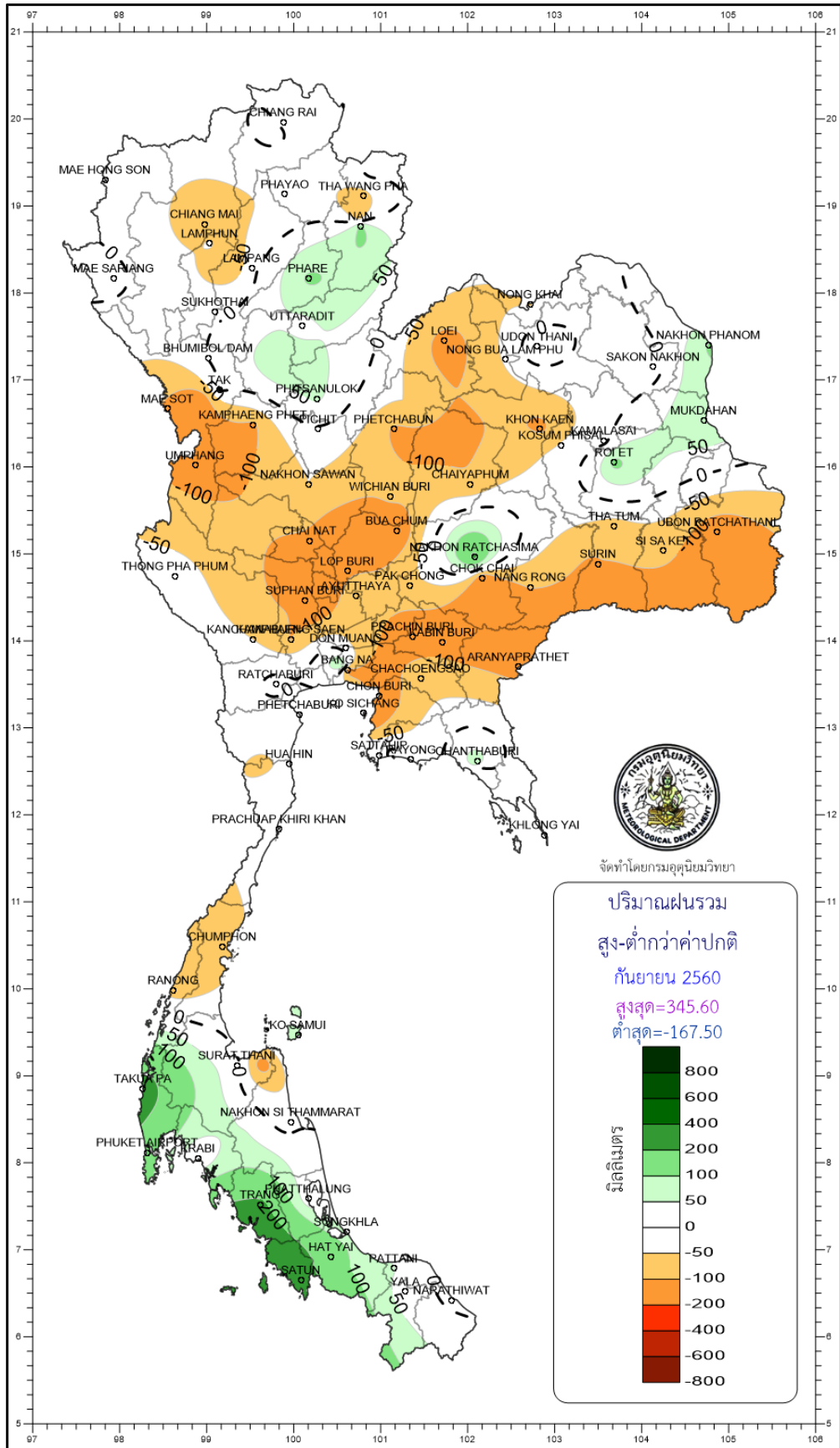
Station	Temperature (°c)		Rainfall (mm)		Accumulative rainfall (mm) Since 1 January	
	Mean	Above or below normal	Actual	Above or below normal	Actual	Above or below normal
Phetchaburi	29.3	1.1	105.6	-48.0	928.2	324.7
Hua Hin	28.9	0.9	119.3	-1.1	892.4	292.6
Prachuap Khiri Khan	29.2	1.5	72.6	-26.9	1184.2	489.7
Chumphon	28.0	1.1	105.4	-72.9	1791.5	581.6
Surat Thani	27.3	0.7	211.8	23.4	1151.1	224.8
Ko Samui	28.4	0.5	228.4	106.7	1814.2	880.8
Nakhon Si Thammarat	27.7	0.4	126.5	-35.1	2712.5	1601.9
Songkhla	28.0	0.1	185.8	48.9	1623.1	804.1
Hat Yai Airport	27.0	0.1	303.4	146.1	1667.8	754.1
Pattani Airport	27.7	0.5	200.1	53.0	1716.5	852.5
Narathiwat	27.6	0.4	173.9	-8.8	2884.4	1798.6
Over the area	28.1	0.7	166.6	16.8 11%	1669.6	782.1 88%

Southern Thailand, west coast

Station	Temperature (°c)		Rainfall (mm)		Accumulative rainfall (mm) Since 1 January	
	Mean	Above or below normal	Actual	Above or below normal	Actual	Above or below normal
Ranong	27.1	0.7	574.7	-71.8	4089.7	643.6
Takua Pa	27.0	0.3	849.9	254.4	3863.3	1026.1
Phuket	27.8	0.3	458.2	97.0	2065.7	416.1
Phuket Airport	28.0	0.7	567.9	168.8	2264.7	418.3
Ko Lanta	28.2	0.6	528.4	198.1	2357.5	709.0
Trang Airport	27.1	0.5	528.5	223.4	2424.6	890.9
Satun	27.3	0.4	674.0	345.6	2230.5	600.4
Over the area	27.5	0.5	597.4	173.7 41%	2756.6	672.1 32%

- NOTES :
- 1) Mean temperature is the average of daily dry-bulb temperature
 - 2) "T" is trace, rainfall amount less than 0.1 mm.
 - 3) "blank" is incomplete data.
 - 4) Temperature and rainfall are preliminary data.





จัดทำโดยกรมการเกษตร มหาวิทยาลัยเกษตรศาสตร์

ปริมาณฝนรวม
 สูง-ต่ำกว่าค่าปกติ
 กันยายน 2560
 สูงสุด=345.60
 ต่ำสุด=-167.50

