

Monthly Weather Summary in Thailand October 2017

Thailand's weather in October 2017 was dominated by the monsoon trough which lay across the upper Thailand during the first half of the month and moved southwards to lie over the southern part coupled with the moderate southwest monsoon prevailed over the Andaman Sea and the southern part during the beginning and the middle of the month. Moreover there were 2 tropical cyclones having some effects of rainfall on Thailand, the first tropical depression in the upper South China Sea moved through upper Vietnam and dissipated over upper Laos during early October and the second was typhoon "KHANUN" (1720) which weakened over the Gulf of Tonkin during middle of the month. These conditions brought abundant rainfall over upper Thailand during the beginning and the middle of the month. After that, decreased in rainfall and temperature especially in northern and northeastern parts affected by the high pressure area from China covering upper Thailand and the replenishment of the southwest monsoon prevailing over the Andaman Sea and southern part changed to the northeast monsoon during the mentioned period that considered as the beginning of the 2017 winter season was October 23. Monthly rainfall was above normal i.e. northern part 66.3 mm (53%), northeastern part 31.8 mm (27%) and central part 89.1 mm (48%) while it was below normal eastern part 3.8 mm (2%), southern part (east coast) 132.4 mm (52%) and southern part (west coast) 55.4 mm (15%). The average total rainfall over Thailand in this month was 5 percent higher than normal. The accumulated rainfall this year up to October was 25 percent higher than normal. Mean temperatures were above normal in all parts. More details on the weather are as follow:

1 – 10 October: The monsoon trough lay across central, eastern and lower northeastern parts during the first half of the period then weakened and shifted southwards to lie over the lower central, upper southern and eastern parts. It lay towards the tropical depression in the upper South China Sea on October 9 and made landfall over southern of Vinh in the morning on the next day. It moved to Laos and downgraded to the active low pressure cell in the afternoon before moving to cover the upper northeastern and northern part. In addition, the southwest monsoon which prevailed over the Andaman Sea and southern part became moderate during the first half of the period. Moreover, the easterly wind prevailed over the northeastern and northern parts on October 7 and 8. These resulted in fairly widespread to widespread rainfall over upper Thailand nearly the whole areas with heavy to very heavy rainfall in some areas. The highest daily rainfall was 176.0 millimeter at Phluang Wildlife Sanctuary in Loei province on October 4 with flash floods at Buriram province on October 3, Nakhon Ratchasima province on October 4, Lop Buri province on October 6, Chainat and Uthai Thani provinces on October 7, Kamphaeng Phet and Lampang provinces on October 8 and also Nakhon Sawan, Sing Buri, Ang Thong and Phra Nakhon Si Ayutthaya provinces on October 10 and Land-slide at Chiang Rai province on October 8. In southern Thailand, scattered to fairly widespread rain was found along the east coast with heavy to very heavy rainfall in some areas while fairly widespread to widespread rain occurred along the west coast with heavy to very heavy rainfall in some areas. The maximum daily rainfall of 148.9 millimeter was measured at Su-ngai Kolok in Narathiwat province on October 9.

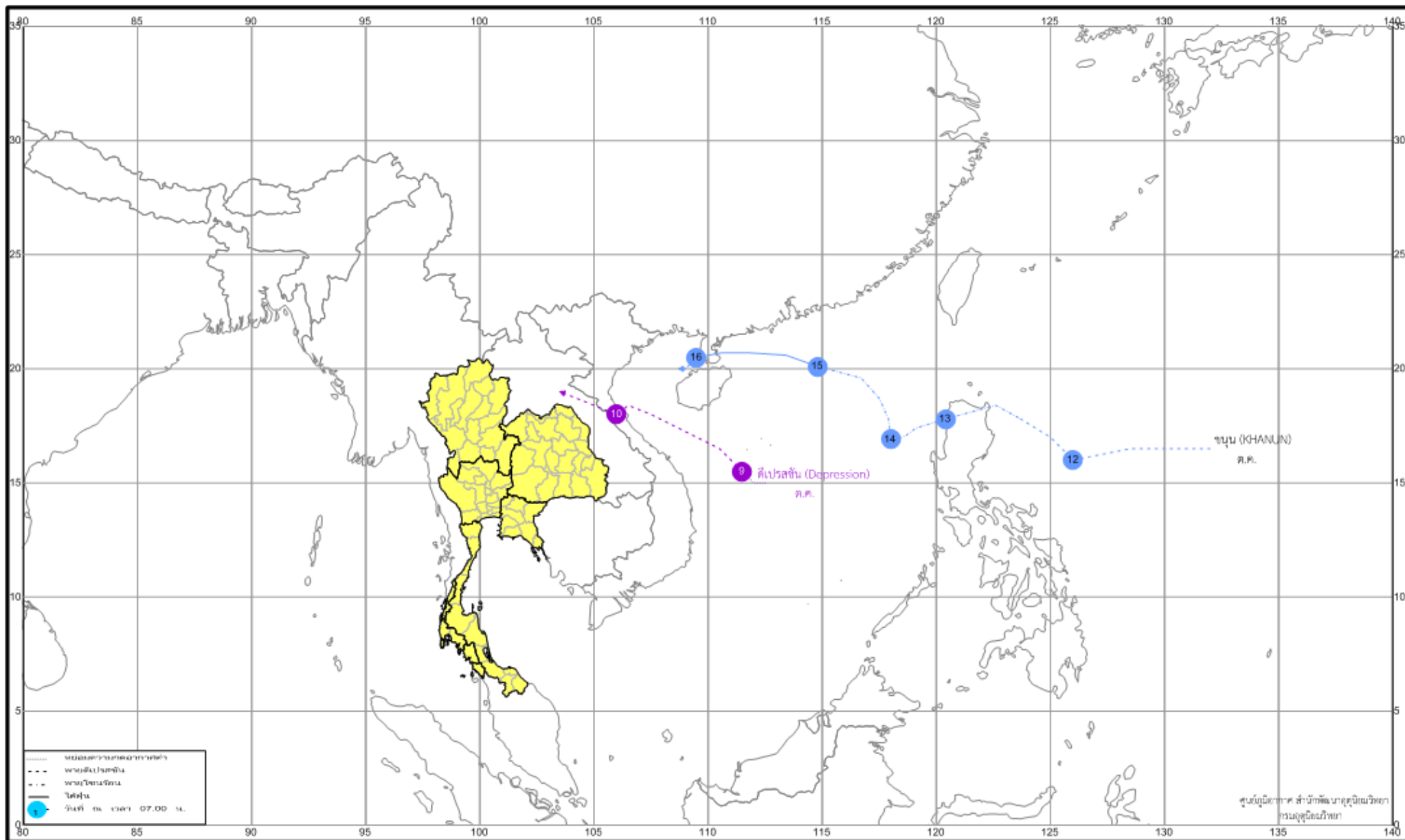
11 – 20 October: The monsoon trough lay across the lower central, upper southern and eastern parts nearly the whole period and lay toward the tropical storm "KHANUN" (1720) in the upper

South China Sea during middle of the period. KHANUN intensified into typhoon in the morning of October 15 before moving pass southern of Guangdong in China to the Gulf of Tonkin. After that it was respectively downgraded and finally degenerated into and areas of low pressure cell over the Gulf of Tonkin on the next day. Besides, the moderate southwest monsoon prevailing over the Andaman Sea and southern part was weakened during late period. These conditions caused scattered to fairly widespread rain over upper Thailand nearly the whole period with heavy to very heavy rainfall in some areas. The heaviest daily rainfall in upper Thailand was 215.2 millimeter at The War Veterans Organization of Thailand in Bangkok on October 13. Flash floods were reported at Suphanburi province on October 15 and Chiang Mai province on October 17 and also occurred with land-slide at Tak province on October 18. Flooding continued from last period at Nakhon Sawan, Sing Buri, Phra Nakhon Si Ayutthaya, Ang Thong, Lop Buri and Chai Nat provinces. Southern Thailand experienced plentiful rain especially widespread rain with heavy rainfall in several along west coast while scattered to fairly widespread rain occurred along the east coast with heavy rainfall in some places during the first half of the period then decreased in rainfall to be isolated rain. The highest daily rainfall was 89.6 mm at Southern Meteorological Center (West Coast) in Phuket province on October 12 with flood and land-slide was reported at Chumphon province on October 15.

21 – 31 October: The monsoon trough which lay across the southern parts was strengthened since middle of the period towards the low pressure cell in the lower South China Sea on October 25. It intensified to tropical depression on the last day of the period associated with the southwest monsoon prevailed over the Andaman Sea and southern part during the first half of the period. These caused abundant rainfall remained over upper Thailand with scattered rain and heavy to very heavy rainfall in some areas of central and eastern parts. The maximum daily rainfall in upper Thailand was 110.0 millimeter at Phanom Sarakham in Chachoengsao province on October 21. In southern part, plentiful rain was observed during middle and late of the period with heavy to very heavy rainfall in some areas. The heaviest daily rainfall was 173.0 millimeter at Bang Klam in Song Khla province on October 29. However, the rather active high pressure area from China extended to cover upper Thailand since the middle of the period and the northeast monsoon prevailed over Thailand during mentioned period. Morning cool weather was found over upper Thailand mainly in northern and northeastern parts with decreasing rainfall from October 23 onwards, which ended the rainy season and started this winter.

Note : 1) Rainfall, temperatures and natural disasters in this report were updated up to November 6, 2017.

Climatological Center
Meteorological Development Bureau
Meteorological Department



เส้นทางเดินพายุหมุนเขตร้อนที่มีผลกระทบต่อสภาวะอากาศของประเทศไทยเดือนตุลาคม พ.ศ.2560

Monthly Current Report
Rainfall and Accumulative Rainfall
October 2017

Northern Thailand

Station	Temperature (°c)		Rainfall (mm)		Accumulative rainfall (mm) Since 1 January	
	Mean	Above or below normal	Actual	Above or below normal	Actual	Above or below normal
Chiang Rai	26.1	1.0	183.3	58.4	2108.8	491.5
Mae Hong Son	26.9	0.5	262.9	148.4	1212.5	-24.6
Phayao	26.1	0.8	178.1	55.5	1237.1	148.3
Chiang Mai	27.0	0.9	192.8	75.2	1380.3	319.5
Tha Wang Pha	26.7	0.9	82.9	-0.5	1384.1	14.6
Nan	27.0	0.6	72.7	2.4	1205.7	-1.7
Lamphun	26.7	0.6	254.6	144.5	1458.2	505.9
Lampang	26.7	0.4	183.4	85.1	1489.5	480.5
Mae Sariang	26.6	0.5	207.0	91.8	1221.8	115.7
Phrae	27.1	0.6	79.2	-9.6	1385.4	304.0
Uttaradit	27.9	0.2	133.3	22.3	1521.7	181.8
Bhumibol Dam	26.7	0.3	370.9	166.6	1392.2	400.8
Tak	27.4	0.6	465.0	265.8	1371.3	369.9
Mae Sot	26.9	0.8	151.5	49.4	1074.9	-363.1
Umphang	25.0	1.1	146.2	-9.6	1357.3	-73.7
Phitsanulok	28.0	0.2	128.4	-34.1	1587.8	315.3
Lom Sak	27.3	0.5	248.4	159.9	1286.3	261.6
Phetchabun	27.5	0.7	117.8	27.4	1355.4	241.4
Wichian Buri	28.0	0.3	167.4	35.8	1379.9	183.9
Kamphaeng Phet	27.8	0.6	182.9	-8.8	1823.3	567.4
Over the area	27.0	0.6	190.4	66.3 53%	1411.7	221.9 19%

Northeastern Thailand

Station	Temperature (°c)		Rainfall (mm)		Accumulative rainfall (mm) Since 1 January	
	Mean	Above or below normal	Actual	Above or below normal	Actual	Above or below normal
Nong Khai	27.2	0.5	178.4	87.5	2071.4	482.7
Loei	26.0	0.4	162.0	38.7	1519.1	306.9
Udon Thani	27.1	0.2	249.6	159.5	1897.1	491.9
Nakhon Phanom	26.9	0.5	150.1	53.1	2658.2	325.9
Sakon Nakhon	26.7	0.3	108.7	31.8	2412.5	785.0
Mukdahan	27.1	0.8	34.9	-65.7	2050.8	586.7
Khon Kaen	26.6	0.1	214.1	96.4	1419.4	192.6
Kosum Phisai	27.3	0.2	343.1	231.7	1886.0	643.5
Roi Et	27.4	0.7	166.3	59.0	1754.3	429.6
Chaiyaphum	27.1	0.1	144.6	7.6	1232.4	118.3
Ubon Ratchathani	27.5	0.7	101.3	-21.8	1782.8	224.7
Tha Tum	27.8	0.8	74.9	-51.4	1242.4	-123.5
Surin	27.2	0.5	119.6	-8.6	1486.8	85.2
Nakhon Ratchasima	27.4	0.7	97.8	-48.5	1787.8	742.9
Chok Chai	27.4	0.8	156.9	-7.4	1058.5	16.3
Nang Rong	26.9	0.4	80.1	-53.8	1221.3	68.0
Over the area	27.1	0.5	148.9	31.8 27%	1717.6	336.1 24%

- NOTES :
- 1) Mean temperature is the average of daily dry-bulb temperature
 - 2) "T" is trace, rainfall amount less than 0.1 mm.
 - 3) "blank" is incomplete data.
 - 4) Temperature and rainfall are preliminary data.

Monthly Current Report
Rainfall and Accumulative Rainfall
October 2017

Central Thailand

Station	Temperature (°c)		Rainfall (mm)		Accumulative rainfall (mm) Since 1 January	
	Mean	Above or below normal	Actual	Above or below normal	Actual	Above or below normal
Nakhon Sawan	28.2	0.5	199.1	45.7	1669.5	551.8
Bua Chum	27.5	0.3	203.8	76.5	1260.9	200.2
Lop Buri	28.5	0.7	147.1	-6.6	1236.7	149.2
Suphan Buri	28.6	0.6	304.5	107.8	1299.9	375.3
Thong Pha Phum	27.0	0.4	320.0	147.7	1643.5	-112.7
Kanchanaburi	28.3	1.0	142.0	-67.2	1093.2	101.6
Bangkok Airport	28.2	0.0	331.7	139.8	1857.5	525.7
Bangkok Metropolis	28.2	0.1	561.3	269.2	2571.8	979.4
Over the area	28.1	0.5	276.2	89.1 48%	1579.1	346.3 28%

Eastern Thailand

Station	Temperature (°c)		Rainfall (mm)		Accumulative rainfall (mm) Since 1 January	
	Mean	Above or below normal	Actual	Above or below normal	Actual	Above or below normal
Prachin Buri	28.7	0.6	189.3	28.4	1873.4	86.8
Kabin Buri	27.8	0.3	191.4	36.9	1992.4	428.6
Aranyaprathet	28.3	0.8	137.9	-36.3	1454.6	150.1
Chon Buri	28.8	0.9	183.2	-25.7	1409.2	167.9
Ko Sichang	28.1	0.6	209.0	1.9	1172.1	22.3
Pattaya	27.8	0.8	347.4	131.3	1207.7	177.4
Sattahip	27.5	0.2	302.1	42.3	1508.8	328.8
Rayong	27.9	0.3	222.5	28.1	1548.8	222.3
Chanthaburi	28.1	1.1	163.4	-134.2	3583.0	650.1
Khlong Ya	27.4	0.6	267.1	-110.3	4440.9	-310.0
Over the area	28.0	0.6	221.3	-3.8 -2%	2019.1	192.3 11%

- NOTES :
- 1) Mean temperature is the average of daily dry-bulb temperature
 - 2) "T" is trace, rainfall amount less than 0.1 mm.
 - 3) "blank" is incomplete data.
 - 4) Temperature and rainfall are preliminary data.

Monthly Current Report
Rainfall and Accumulative Rainfall
October 2017

Southern Thailand, east coast

Station	Temperature (°c)		Rainfall (mm)		Accumulative rainfall (mm) Since 1 January	
	Mean	Above or below normal	Actual	Above or below normal	Actual	Above or below normal
Phetchaburi	28.5	0.8	227.2	-51.2	1155.4	273.5
Hua Hin	28.4	1.0	146.5	-99.7	1038.9	192.9
Prachuap Khiri Khan	28.2	1.1	57.2	-170.6	1241.4	319.1
Chumphon	27.6	1.0	116.0	-135.6	1907.5	446.0
Surat Thani	27.4	1.0	66.5	-169.9	1217.6	54.9
Ko Samui	28.3	1.1	38.7	-271.1	1852.9	609.7
Nakhon Si Thammarat	27.7	1.0	123.3	-179.7	2835.8	1422.2
Songkhla	28.0	0.7	205.0	-52.1	1828.1	752.0
Hat Yai Airport	27.3	0.8	71.6	-156.2	1739.4	597.9
Pattani Airport	27.8	0.9	94.0	-122.2	1810.5	730.3
Narathiwat	27.7	0.8	206.3	-48.1	3090.7	1750.5
Over the area	27.9	0.9	122.9	-132.4 -52%	1792.6	649.8 57%

Southern Thailand, west coast

Station	Temperature (°c)		Rainfall (mm)		Accumulative rainfall (mm) Since 1 January	
	Mean	Above or below normal	Actual	Above or below normal	Actual	Above or below normal
Ranong	27.1	0.7	440.5	16.0	4530.2	659.6
Takua Pa	27.2	0.7	375.6	-142.2	4238.9	883.9
Phuket	28.3	0.9	324.6	4.5	2390.3	420.6
Phuket Airport	28.0	1.0	434.3	80.9	2699.0	499.2
Ko Lanta	28.1	0.8	169.0	-156.4	2526.5	552.6
Trang Airport	27.6	1.2	122.0	-163.5	2546.6	727.4
Satun	27.6	0.8	311.8	-27.2	2542.3	573.2
Over the area	27.7	0.9	311.1	-55.4 -15%	3067.7	616.7 25%

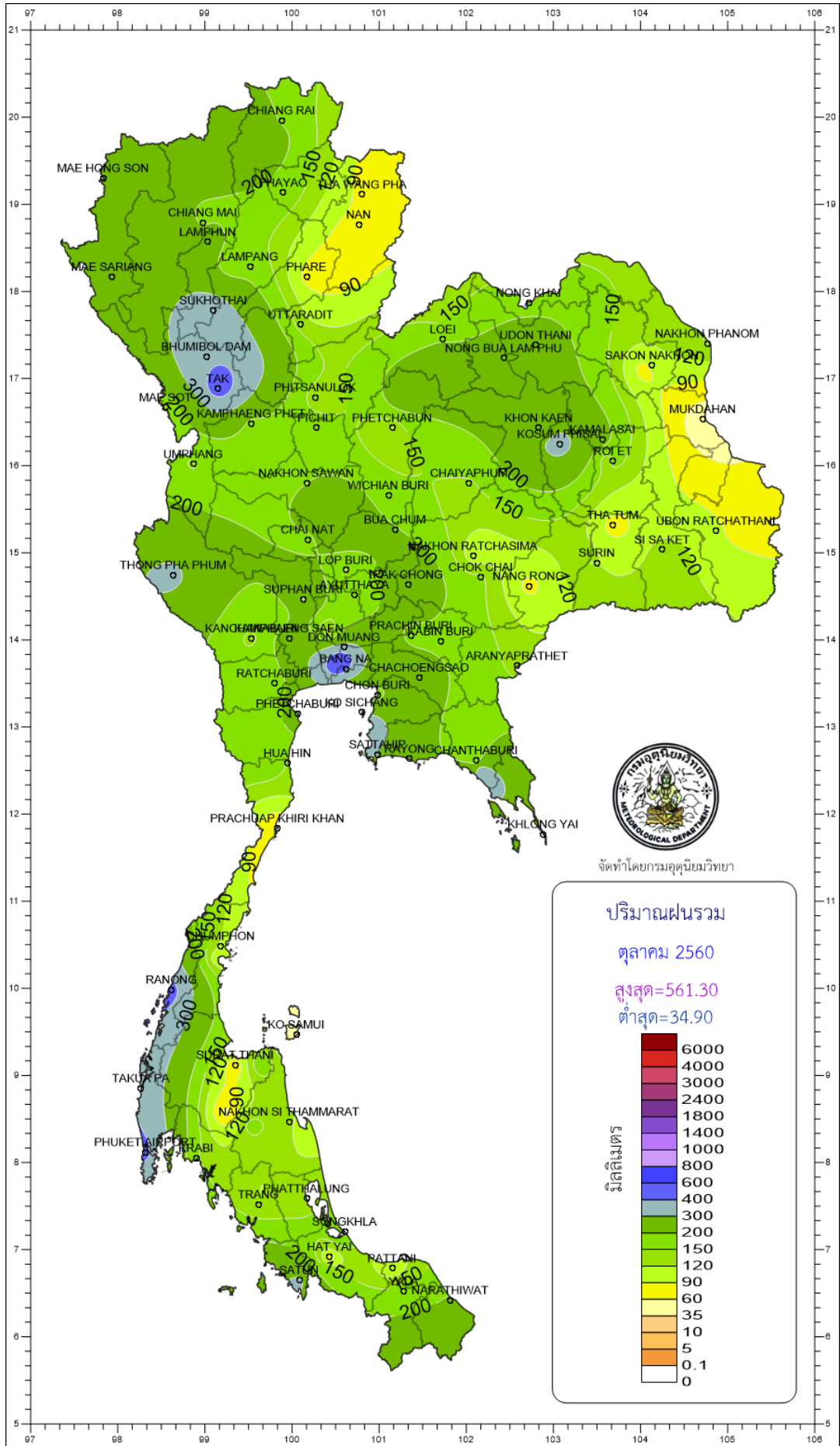
- NOTES :
- 1) Mean temperature is the average of daily dry-bulb temperature
 - 2) "T" is trace, rainfall amount less than 0.1 mm.
 - 3) "blank" is incomplete data.
 - 4) Temperature and rainfall are preliminary data.

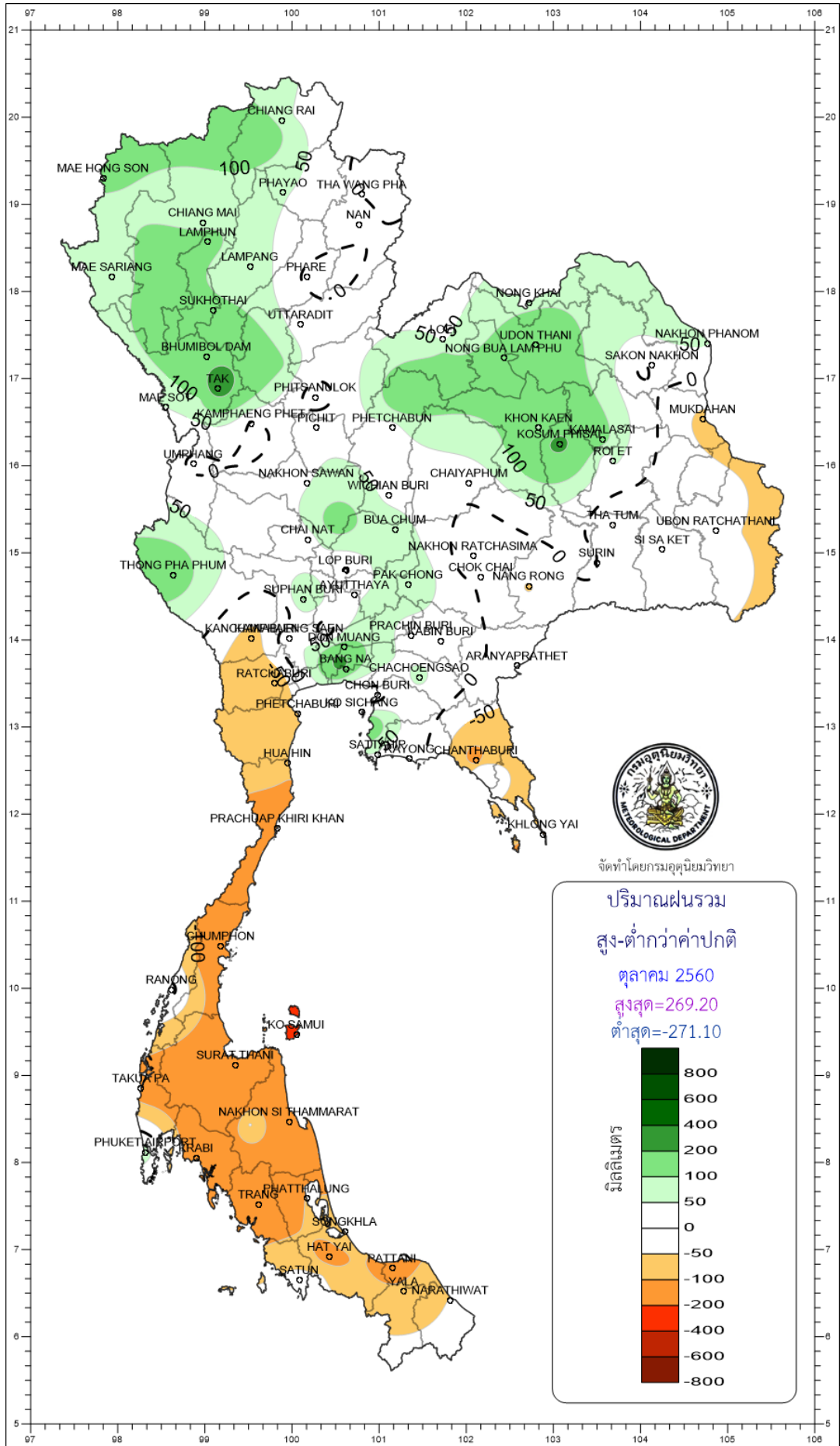
Monthly Current Report

October 2017

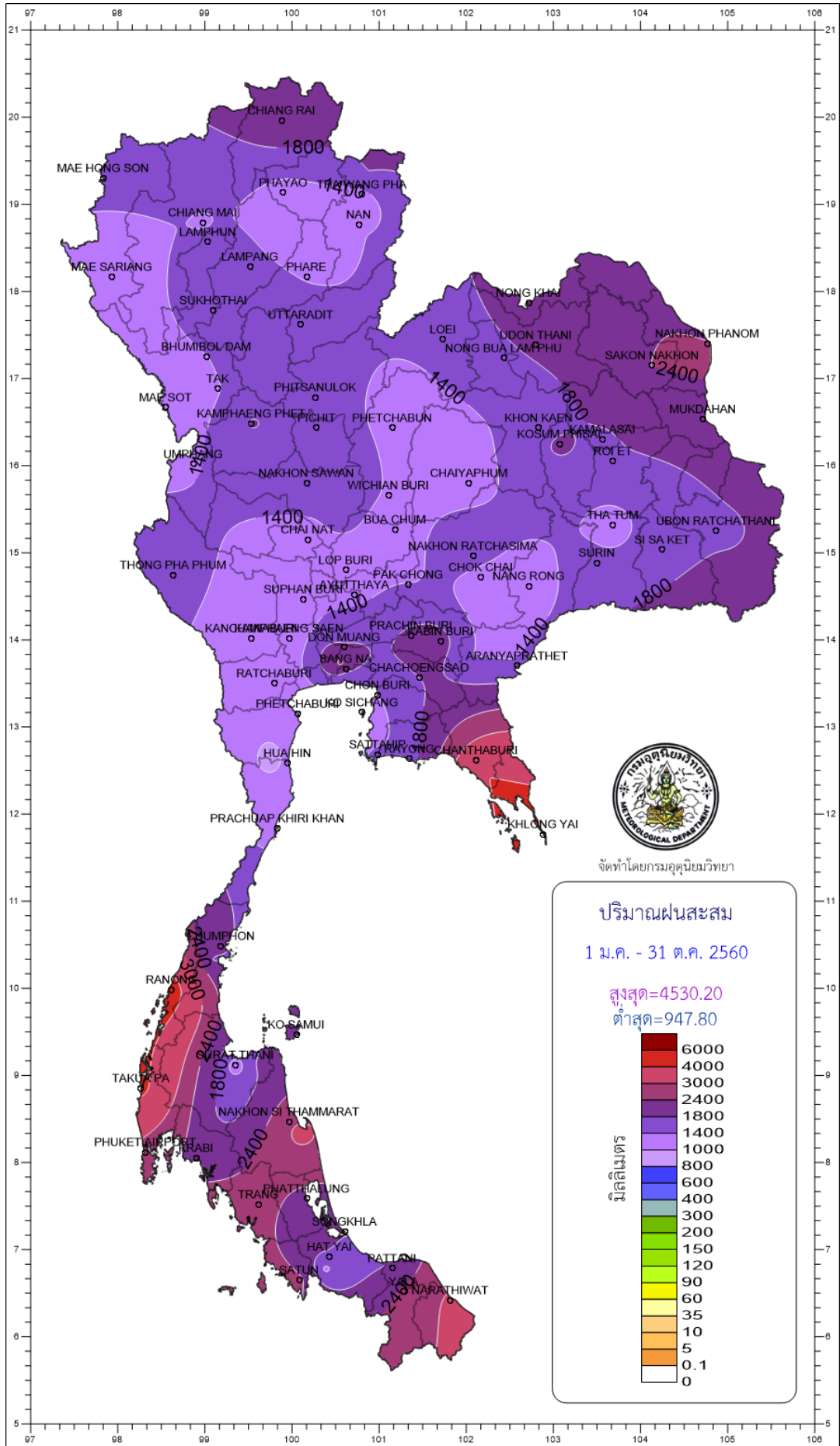
Region	Station	Temperature (°c)		Rainfall (mm)		Accumulative rainfall (mm) Since 1 January	
		Mean	Above or below normal	Actual	Above or below normal	Actual	Above or below normal
North	Chiang Rai	26.1	1.0	183.3	58.4	2108.8	491.5
	Mae Hong Son	26.9	0.5	262.9	148.4	1212.5	-24.6
	Phayao	26.1	0.8	178.1	55.5	1237.1	148.3
	Chiang Mai	27.0	0.9	192.8	75.2	1380.3	319.5
	Tha Wang Pha	26.7	0.9	82.9	-0.5	1384.1	14.6
	Nan	27.0	0.6	72.7	2.4	1205.7	-1.7
	Lamphun	26.7	0.6	254.6	144.5	1458.2	505.9
	Lampang	26.7	0.4	183.4	85.1	1489.5	480.5
	Mae Sariang	26.6	0.5	207.0	91.8	1221.8	115.7
	Phrae	27.1	0.6	79.2	-9.6	1385.4	304.0
	Uttaradit	27.9	0.2	133.3	22.3	1521.7	181.8
	Bhumibol Dam	26.7	0.3	370.9	166.6	1392.2	400.8
	Tak	27.4	0.6	465.0	265.8	1371.3	369.9
	Mae Sot	26.9	0.8	151.5	49.4	1074.9	-363.1
	Umphang	25.0	1.1	146.2	-9.6	1357.3	-73.7
	Phitsanulok	28.0	0.2	128.4	-34.1	1587.8	315.3
	Lom Sak	27.3	0.5	248.4	159.9	1286.3	261.6
	Phetchabun	27.5	0.7	117.8	27.4	1355.4	241.4
	Wichian Buri	28.0	0.3	167.4	35.8	1379.9	183.9
Kamphaeng Phet	27.8	0.6	182.9	-8.8	1823.3	567.4	
Northeast	Nong Khai	27.2	0.5	178.4	87.5	2071.4	482.7
	Loei	26.0	0.4	162.0	38.7	1519.1	306.9
	Udon Thani	27.1	0.2	249.6	159.5	1897.1	491.9
	Nakhon Phanom	26.9	0.5	150.1	53.1	2658.2	325.9
	Sakon Nakhon	26.7	0.3	108.7	31.8	2412.5	785.0
	Mukdahan	27.1	0.8	34.9	-65.7	2050.8	586.7
	Khon Kaen	26.6	0.1	214.1	96.4	1419.4	192.6
	Kosum Phisai	27.3	0.2	343.1	231.7	1886.0	643.5
	Roi Et	27.4	0.7	166.3	59.0	1754.3	429.6
	Chaiyaphum	27.1	0.1	144.6	7.6	1232.4	118.3
	Ubon Ratchathani	27.5	0.7	101.3	-21.8	1782.8	224.7
	Tha Tum	27.8	0.8	74.9	-51.4	1242.4	-123.5
	Surin	27.2	0.5	119.6	-8.6	1486.8	85.2
	Nakhon Ratchasima	27.4	0.7	97.8	-48.5	1787.8	742.9
Chok Chai	27.4	0.8	156.9	-7.4	1058.5	16.3	
Nang Rong	26.9	0.4	80.1	-53.8	1221.3	68.0	
Central	Nakhon Sawan	28.2	0.5	199.1	45.7	1669.5	551.8
	Bua Chum	27.5	0.3	203.8	76.5	1260.9	200.2
	Lop Buri	28.5	0.7	147.1	-6.6	1236.7	149.2
	Suphan Buri	28.6	0.6	304.5	107.8	1299.9	375.3
	Thong Pha Phum	27.0	0.4	320.0	147.7	1643.5	-112.7
	Kanchanaburi	28.3	1.0	142.0	-67.2	1093.2	101.6
	Bangkok Airport	28.2	0.0	331.7	139.8	1857.5	525.7
	Bangkok Metropolis	28.2	0.1	561.3	269.2	2571.8	979.4
East	Prachin Buri	28.7	0.6	189.3	28.4	1873.4	86.8
	Kabin Buri	27.8	0.3	191.4	36.9	1992.4	428.6
	Aranyaprathet	28.3	0.8	137.9	-36.3	1454.6	150.1
	Chon Buri	28.8	0.9	183.2	-25.7	1409.2	167.9
	Ko Sichang	28.1	0.6	209.0	1.9	1172.1	22.3
	Pattaya	27.8	0.8	347.4	131.3	1207.7	177.4
	Sattahip	27.5	0.2	302.1	42.3	1508.8	328.8
	Rayong	27.9	0.3	222.5	28.1	1548.8	222.3
	Chanthaburi	28.1	1.1	163.4	-134.2	3583.0	650.1
	Khlong Yai	27.4	0.6	267.1	-110.3	4440.9	-310.0
South (East Coast)	Phetchaburi	28.5	0.8	227.2	-51.2	1155.4	273.5
	Hua Hin	28.4	1.0	146.5	-99.7	1038.9	192.9
	Prachuap Khiri Khan	28.2	1.1	57.2	-170.6	1241.4	319.1
	Chumphon	27.6	1.0	116.0	-135.6	1907.5	446.0
	Surat Thani	27.4	1.0	66.5	-169.9	1217.6	54.9
	Ko Samui	28.3	1.1	38.7	-271.1	1852.9	609.7
	Nakhon Si Thammarat	27.7	1.0	123.3	-179.7	2835.8	1422.2
	Songkhla	28.0	0.7	205.0	-52.1	1828.1	752.0
	Hat Yai Airport	27.3	0.8	71.6	-156.2	1739.4	597.9
	Pattani Airport	27.8	0.9	94.0	-122.2	1810.5	730.3
Narathiwat	27.7	0.8	206.3	-48.1	3090.7	1750.5	
South (West Coast)	Ranong	27.1	0.7	440.5	16.0	4530.2	659.6
	Takua Pa	27.2	0.7	375.6	-142.2	4238.9	883.9
	Phuket	28.3	0.9	324.6	4.5	2390.3	420.6
	Phuket Airport	28.0	1.0	434.3	80.9	2699.0	499.2
	Ko Lanta	28.1	0.8	169.0	-156.4	2526.5	552.6
	Trang Airport	27.6	1.2	122.0	-163.5	2546.6	727.4
Satun	27.6	0.8	311.8	-27.2	2542.3	573.2	
	Over the area	27.5	0.7	196.4	9.2	1801.8	360.7
					5%		25%

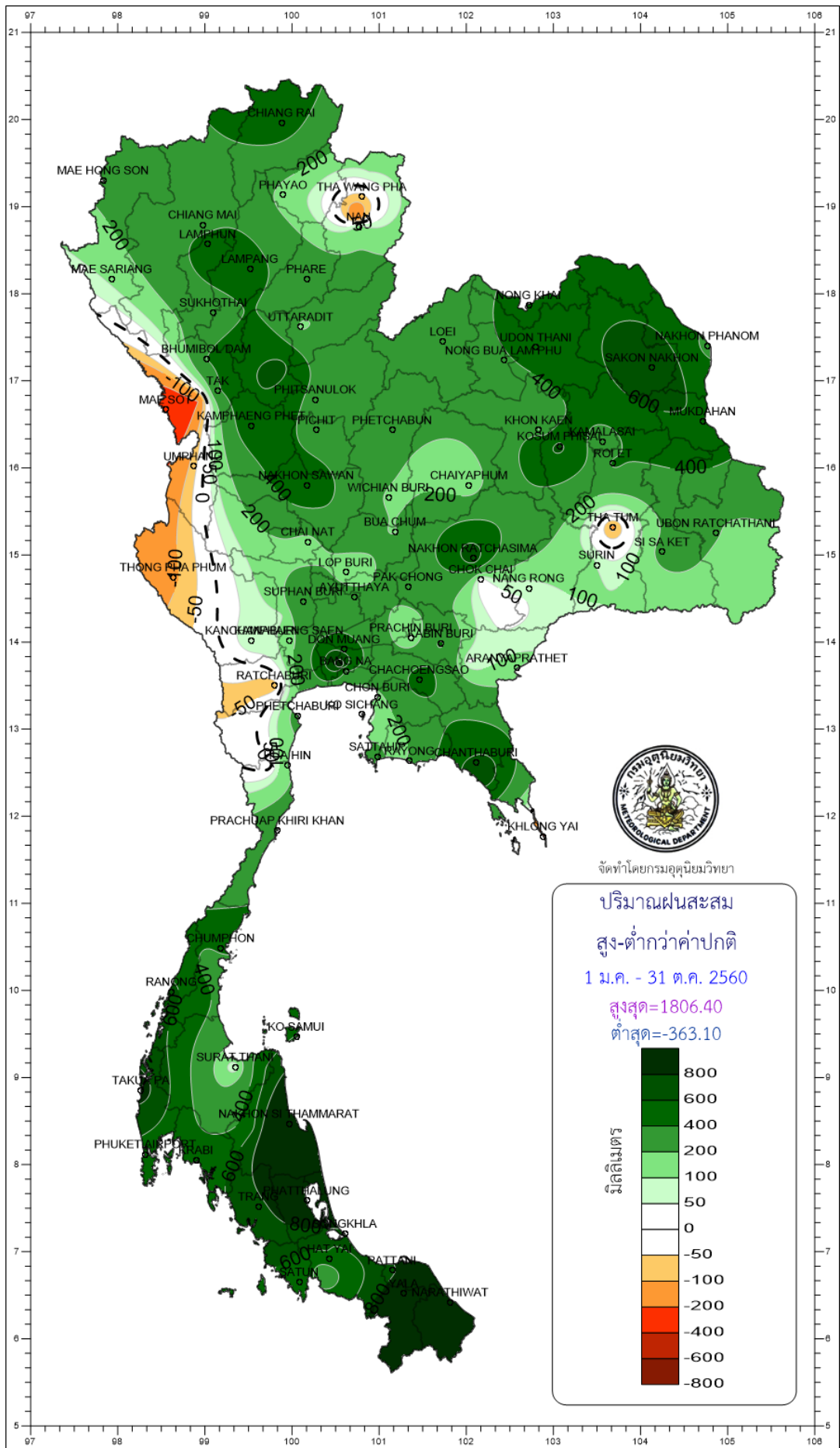
- NOTES :
- 1) Mean temperature is the average of daily dry-bulb temperature
 - 2) "T" is trace, rainfall amount less than 0.1 mm.
 - 3) "blank" is incomplete data
 - 4) Temperature and rainfall are preliminary data

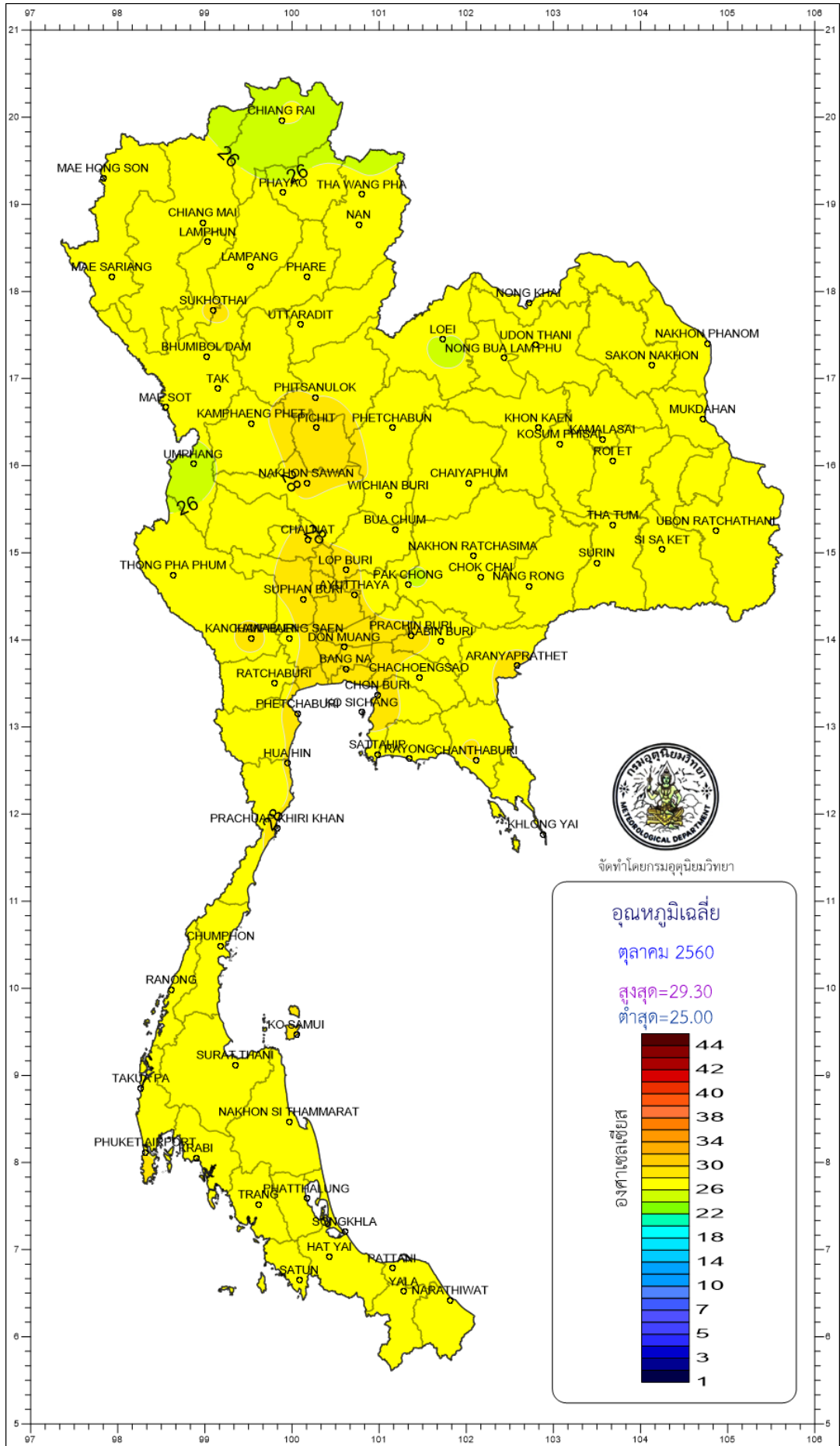


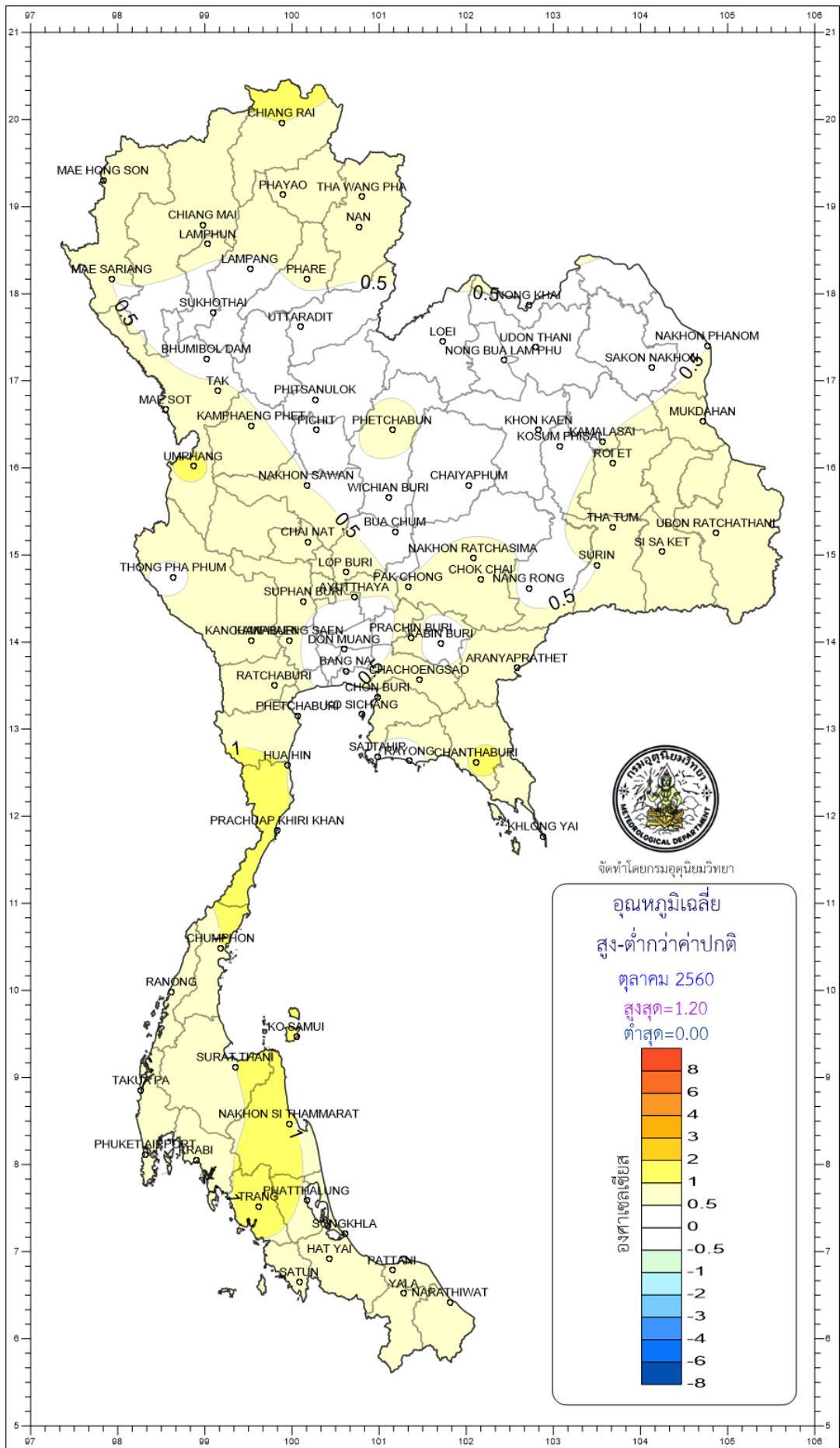


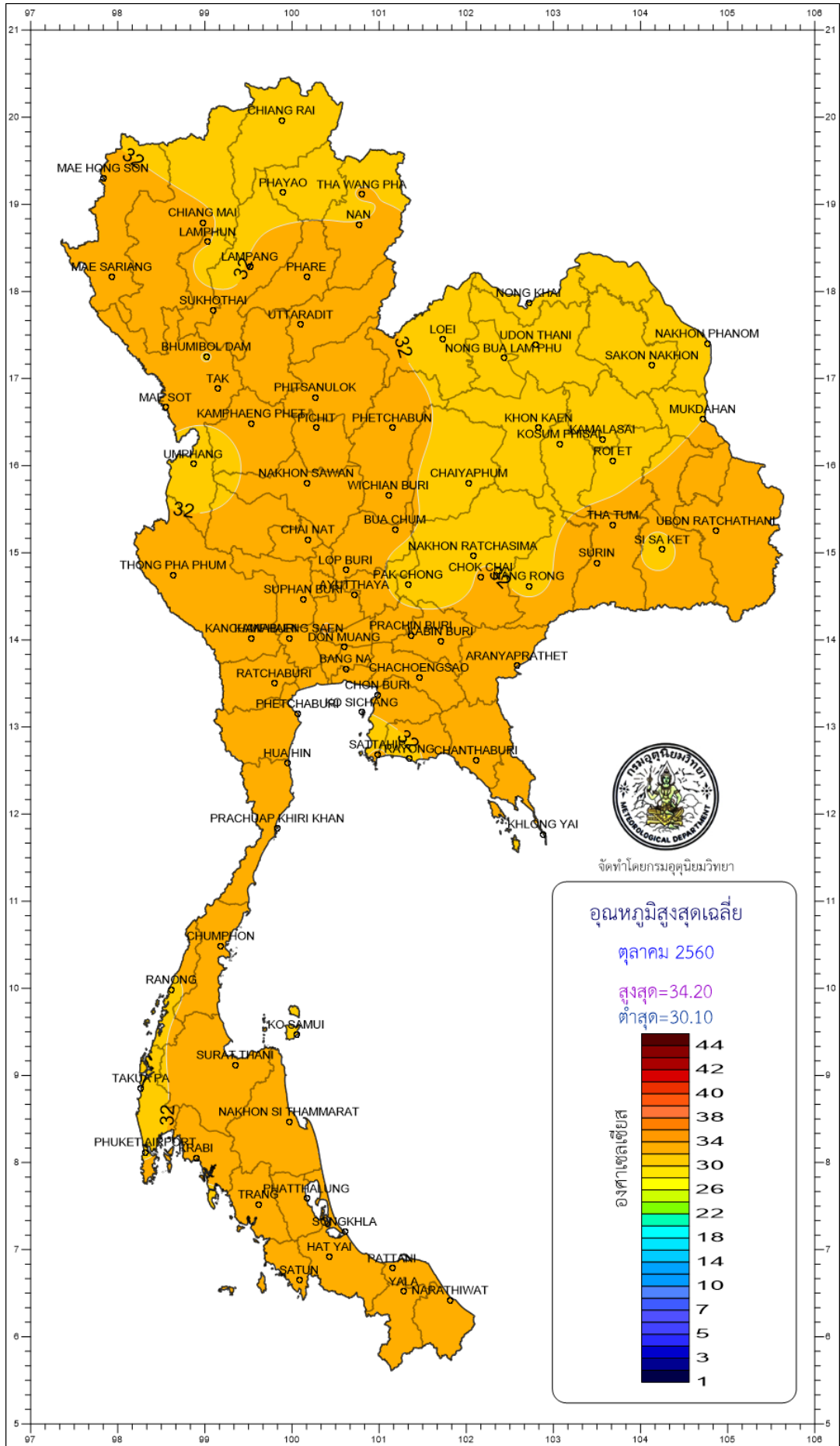
จัดทำโดยกรมอุตุนิยมวิทยา











CHIANG RAI
 MAE HONG SON
 MAE SARIANG
 CHIANG MAI
 LAMPHUN
 PHAYAO
 THA WANG PHA
 NAN
 LAMPANG
 PHARE
 SUKHOThAI
 UTTARADIT
 BHUMBOL DAM
 TAK
 PHITSANULOK
 KAMPHAENG PHET
 PICHIT
 PHETCHABUN
 NONG KHAI
 LOEI
 UDON THANI
 NONG BUA LAMPHU
 NAKHON PHANOM
 SAKON NAKHON
 MAI SOT
 KHAMPHANG PHET
 PHICHIT
 PHETCHABUN
 KHON KAEN
 KAMALASAI
 ROE ET
 UMRHANG
 NAKHON SAWAN
 WICHIAN BURI
 CHAIYAPHUM
 MU KDAHAN
 CHAI NAT
 BUA CHUM
 THA TUM
 UBON RATCHATHANI
 THONG PHA PHUM
 LOP BURI
 PAK CHONG
 CHOK CHAI
 SURIN
 SI SA KET
 SUPHAN BURI
 BANGKOK
 NAKHON RATCHASIMA
 CHANG RONG
 KANGUANG
 PHIBANG
 SAEN
 DON MUANG
 PRACHIN BURI
 BABIN BURI
 RATCHABURI
 BANG NA
 CHACHOENGSAO
 ARANYAPRATHET
 PHETCHABURI
 CHON BURI
 PHETCHABURI
 SICHANG
 HUAHIN
 SATTAHIP
 YONGCHANTHABURI
 PRACHUAP KHIRI KHAN
 KHLONG YAI
 CHUMPHON
 RANONG
 KO SAMUI
 SURAT THANI
 TAKU PA
 NAKHON SI THAMMARAT
 PHUKET AIRPORT
 PHUKET THABI
 PHATTHALUNG
 TRANG
 SONGKHLA
 HAT YAI
 SATUN
 NATTANI
 YALA
 NARATHIWAT

