

Monthly Weather Summary in Thailand October 2016

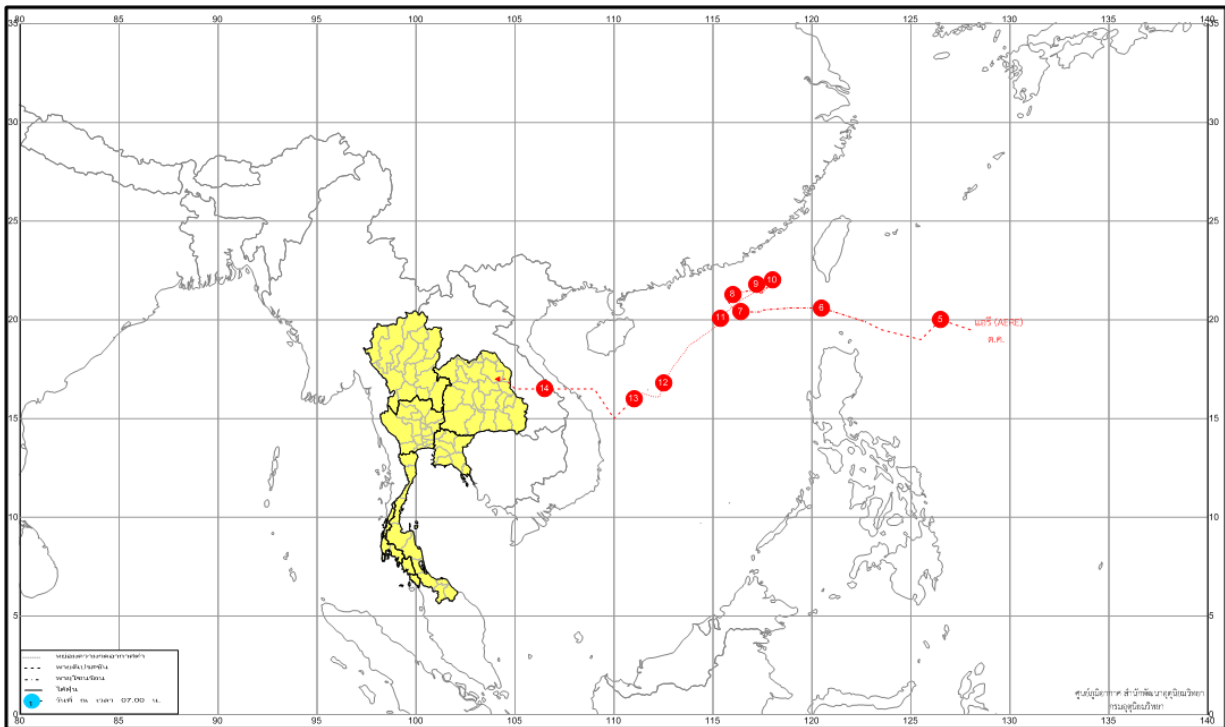
The monsoon trough mostly lay across upper Thailand coupled with southwest monsoon prevailed over the Andaman Sea, southern part and the Gulf of Thailand throughout the month, moreover the remnant of tropical storm “AERE (1619)” in the middle South China Sea re-intensified into a tropical depression on October 13 and made landfall over the central part of Vietnam then moved through middle Laos before entering Thailand around the adjacent area of Mukdahan and Nakhon Phanom provinces on October 14 and the low pressure cell covered the lower southern part and the lower Gulf of Thailand during the end of the month. These caused Thailand weather in October 2016 was much warmer and wetter than usual especially the first highest on 30 years’ monthly rainfall record for October in the west coast of southern part. The average rainfall over the whole area of Thailand was 28 % higher than 1981-2010 normal and monthly rainfall in all regions were above the normal i.e. northern part 37.1 mm (30%), northeastern part 2.2 mm (2%), central part 69.3 mm (37%), eastern part 79.2 mm (35%) southern part (east coast) 13.9 mm (5%) and southern part (west coast) 215.4 mm (59%). Meanwhile the high pressure area from China extended its ridge to cover northern, northeastern and central parts in the end of the month, upper Thailand weather was decreasing in temperature and rainfall especially northern and northeastern parts that considered as the beginning of the 2016 winter season was on October 30.

1 – 10 October: The monsoon trough lay across the lower northern, central and northeastern parts during beginning and middle of the period after that moved southward to lie across the lower northeastern, central and eastern parts accompanied with the southwest monsoon blew across the Andaman Sea, southern part and the Gulf of Thailand throughout the period. These resulted in scattered to widespread rain over upper Thailand nearly the whole period with heavy to very heavy rainfall in some areas especially in Bangkok. The highest daily rainfall was 121.0 millimeter at Ko Kut in Trat province on October 8. In southern Thailand, plentiful rain was observed nearly the whole period with heavy to very heavy rainfall in some areas mainly along the west coast. The maximum daily rainfall of 113.4 millimeter was measured at Takua Pa in Phang-nga province on October 2.

11 – 20 October: The monsoon trough shifted southwards to lay across the lower central, upper southern and northeastern parts nearly the whole period coupled with the southwest monsoon prevailed over the Andaman Sea, Thailand and the Gulf of Thailand throughout the period. The active low pressure cell in the middle South China Sea which downgraded from the tropical storm “AERE (1619)” was re-intensified into the tropical depression on October 13 then moved westwards and made landfall over Da-Nang, Vietnam on the same day. After that, it moved through middle Laos before entering Thailand around the adjacent area of Mukdahan and Nakhon Phanom province in the evening of October 14 and downgraded into the low pressure cell over Sakhon Nakhon province and later dissipated on that day. These conditions brought isolated to scattered rain over upper Thailand nearly the whole period with heavy rainfall in some areas. The highest daily rainfall was 86.3 millimeter at Laem Ngop in Trat province on October 19. For southern Thailand, fairly widespread to widespread rain nearly the whole period with heavy to very heavy rainfall in some areas mainly along the west coast. The heaviest daily rainfall was 168.2 mm at Amphoe Mueang in Ranong province on October 18.

21 – 31 October: Under the influence of the monsoon trough lying across lower central, upper southern and eastern parts during early period accompanied with the active southwest monsoon prevailing over the Andaman Sea, southern part and the Gulf of Thailand. Besides, the

active low pressure cell covered tip of Indochina and lower Gulf of Thailand during October 25 - 26 and the low pressure cell covered lower southern part of Thailand and Malaysia during late period. These conditions caused increasing in rainfall over Thailand since the middle of the period. The maximum daily rainfall was 131.0 millimeter at Bangkok Port, Khlong Toei in Bangkok on October 24. Flash flooding was reported at Kanchanaburi province on October 27 and 30. Meanwhile the heaviest daily rainfall in southern Thailand was 144.3 millimeter at Mueang in Prachuap Khiri Khan province on October 31. Flood was reported at Krabi province on October 25 and land slide occurred at Surat Thani province on October 31. However, the moderate to rather active high pressure area from China extended its ridge to cover northern, northeastern and central parts since the middle of the period caused cool weather in the morning over upper Thailand mainly in the upper northern part especially from October 30 onwards.



Tropical storm “AERE (1619)” tracks in October 2016

Note : Rainfall, temperatures and natural disasters in this report were updated up to November 8, 2016.

Climatological Center
 Meteorological Development Bureau
 Meteorological Department

Monthly Current Report
Rainfall and Accumulative Rainfall
October 2016

Northern Thailand

Station	Temperature (°c)		Rainfall (mm)		Accumulative rainfall (mm) Since 1 January	
	Mean	Above or below normal	Actual	Above or below normal	Actual	Above or below normal
Chiang Rai	26.5	1.4	164.0	39.1	1818.7	201.4
Mae Hong Son	27.3	0.9	132.5	18.0	1074.2	-162.9
Phayao	26.4	1.1	192.1	69.5	963.1	-125.7
Chiang Mai	27.6	1.5	141.7	24.1	1068.0	7.2
Tha Wang Pha	27.4	1.6	96.9	13.5	1666.0	296.5
Nan	27.8	1.4	49.9	-20.4	1401.9	194.5
Lamphun	27.2	1.1	136.0	25.9	1282.2	329.9
Lampang	27.2	0.9	172.8	74.5	1075.9	66.9
Mae Sariang	27.1	1.0	189.9	74.7	964.1	-142.0
Phrae	27.6	1.1	132.2	43.4	1278.7	197.3
Uttaradit	28.6	0.9	255.0	144.0	1328.8	-11.1
Bhumibol Dam	27.4	1.0	277.3	73.0	1039.2	47.8
Tak	27.8	1.0	320.5	121.3	1039.9	38.5
Mae Sot	27.0	0.9	135.2	33.1	1182.0	-256.0
Umphang	25.2	1.3	228.7	72.9	1349.1	-81.9
Phitsanulok	28.4	0.6	186.8	24.3	1322.7	50.2
Lom Sak	27.7	0.9	55.0	-33.5	1061.6	36.9
Phetchabun	28.1	1.3	49.1	-41.3	1012.4	-101.6
Wichian Buri	28.4	0.7	131.1	-0.5	1066.5	-129.5
Kamphaeng Phet	28.2	1.0	178.2	-13.5	1147.9	-108.0
Over the area	27.4	1.0	161.2	37.1 30%	1207.1	17.3 1%

Northeastern Thailand

Station	Temperature (°c)		Rainfall (mm)		Accumulative rainfall (mm) Since 1 January	
	Mean	Above or below normal	Actual	Above or below normal	Actual	Above or below normal
Nong Khai	28.4	1.7	189.4	98.5	1929.3	340.6
Loei	27.0	1.4	133.5	10.2	1276.7	64.5
Udon Thani	28.0	1.1	125.6	35.5	1414.8	9.6
Nakhon Phanom	27.9	1.5	62.5	-34.5	2343.6	11.3
Sakon Nakhon	27.8	1.4	46.2	-30.7	1322.8	-304.7
Mukdahan	27.9	1.6	58.7	-41.9	1282.0	-182.1
Khon Kaen	27.5	1.0	154.9	37.2	1224.6	-2.2
Kosum Phisai	28.3	1.2	118.6	7.2	1695.9	453.4
Roi Et	28.3	1.6	99.9	-7.4	1460.7	136.0
Chaiyaphum	28.1	1.1	144.3	7.3	1209.4	95.3
Ubon Ratchathani	28.1	1.3	93.0	-30.1	1885.7	327.6
Tha Tum	28.3	1.3	141.1	14.8	1319.5	-46.4
Surin	27.8	1.1	135.8	7.6	1357.8	-43.8
Nakhon Ratchasima	27.9	1.2	118.8	-27.5	1184.8	139.9
Chok Chai	27.7	1.1	165.2	0.9	973.9	-68.3
Nang Rong	27.4	0.9	122.0	-11.9	1260.9	107.6
Over the area	27.9	1.3	119.3	2.2 2%	1446.4	64.9 5%

- NOTES :
- 1) Mean temperature is the average of daily dry-bulb temperature
 - 2) "T" is trace, rainfall amount less than 0.1 mm.
 - 3) "blank" is incomplete data.
 - 4) Temperature and rainfall are preliminary data.

Monthly Current Report
Rainfall and Accumulative Rainfall
October 2016

Central Thailand

Station	Temperature (°c)		Rainfall (mm)		Accumulative rainfall (mm) Since 1 January	
	Mean	Above or below normal	Actual	Above or below normal	Actual	Above or below normal
Nakhon Sawan	28.4	0.7	320.5	167.1	1480.0	362.3
Bua Chum	28.0	0.8	173.0	45.7	1092.7	32.0
Lop Buri	28.5	0.7	130.7	-23.0	1097.8	10.3
Suphan Buri	28.9	0.9	245.8	49.1	1001.9	77.3
Thong Pha Phum	27.5	0.9	186.0	13.7	1325.9	-430.3
Kanchanaburi	28.4	1.1	388.3	179.1	1182.3	190.7
Bangkok Airport	28.5	0.3	312.7	120.8	1655.7	323.9
Bangkok Metropolis	28.7	0.6	293.8	1.7	1876.8	284.4
Over the area	28.4	0.8	256.4	69.3 37%	1339.1	106.3 9%

Eastern Thailand

Station	Temperature (°c)		Rainfall (mm)		Accumulative rainfall (mm) Since 1 January	
	Mean	Above or below normal	Actual	Above or below normal	Actual	Above or below normal
Prachin Buri	28.8	0.7	240.7	79.8	1702.9	-83.7
Kabin Buri	28.0	0.5	286.4	131.9	1549.8	-14.0
Aranyaprathet	28.4	0.9	100.2	-74.0	958.6	-345.9
Chon Buri	28.9	1.0	261.3	52.4	1369.7	128.4
Ko Sichang	28.3	0.8	187.2	-19.9	980.9	-168.9
Pattaya	27.8	0.8	367.5	151.4	1278.9	248.6
Sattahip	27.6	0.3	300.6	40.8	1378.9	198.9
Rayong	27.9	0.3	190.1	-4.3	1231.5	-95.0
Chanthaburi	27.6	0.6	437.3	139.7	3277.2	344.3
Khlong Ya	26.9	0.1	671.8	294.4	5575.6	824.7
Over the area	28.0	0.6	304.3	79.2 35%	1930.4	103.6 6%

- NOTES :
- 1) Mean temperature is the average of daily dry-bulb temperature
 - 2) "T" is trace, rainfall amount less than 0.1 mm.
 - 3) "blank" is incomplete data.
 - 4) Temperature and rainfall are preliminary data.

Monthly Current Report
Rainfall and Accumulative Rainfall
October 2016

Southern Thailand, east coast

Station	Temperature (°c)		Rainfall (mm)		Accumulative rainfall (mm) Since 1 January	
	Mean	Above or below normal	Actual	Above or below normal	Actual	Above or below normal
Phetchaburi	28.1	0.4	448.5	170.1	1054.2	172.3
Hua Hin	27.7	0.3	354.1	107.9	804.2	-41.8
Prachuap Khiri Khan	27.4	0.3	367.5	139.7	1023.0	100.7
Chumphon	26.9	0.3	287.3	35.7	1198.9	-262.6
Surat Thani	26.8	0.4	180.3	-56.1	804.5	-358.2
Ko Samui	28.3	1.1	187.3	-122.5	855.1	-388.1
Nakhon Si Thammarat	27.3	0.6	272.3	-30.7	958.5	-455.1
Songkhla	28.2	0.9	253.5	-3.6	1013.1	-63.0
Hat Yai Airport	27.3	0.8	137.2	-90.6	772.4	-369.1
Pattani Airport	27.5	0.6	249.0	32.8	915.9	-164.3
Narathiwat	28.0	1.1	224.2	-30.2	1314.5	-25.7
Over the area	27.6	0.6	269.2	13.9 5%	974.0	-168.8 -15%

Southern Thailand, west coast

Station	Temperature (°c)		Rainfall (mm)		Accumulative rainfall (mm) Since 1 January	
	Mean	Above or below normal	Actual	Above or below normal	Actual	Above or below normal
Ranong	26.4	0.0	872.8	448.3	4619.4	748.8
Takua Pa	26.3	-0.2	1156.7	638.9	5550.0	2195.0
Phuket	27.6	0.2	449.9	129.8	2304.5	334.8
Phuket Airport	27.5	0.5	614.4	261.0	3516.0	1316.2
Ko Lanta	28.2	0.9	281.3	-44.1	2259.8	285.9
Trang Airport	27.2	0.8	306.3	20.8	2055.4	236.2
Satun	27.1	0.3	392.1	53.1	1550.9	-418.2
Over the area	27.2	0.4	581.9	215.4 59%	3122.3	671.3 27%

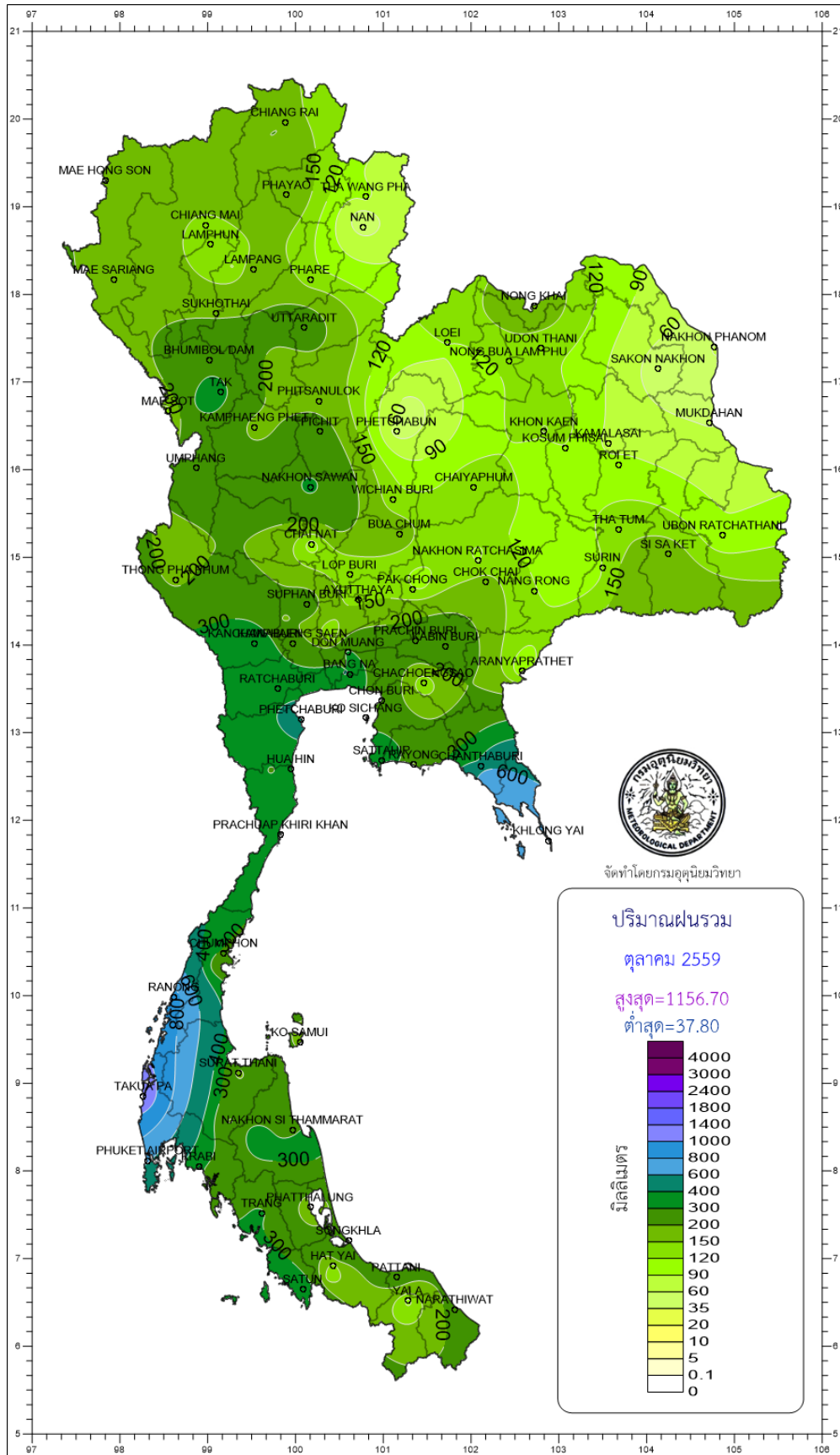
- NOTES :
- 1) Mean temperature is the average of daily dry-bulb temperature
 - 2) "T" is trace, rainfall amount less than 0.1 mm.
 - 3) "blank" is incomplete data.
 - 4) Temperature and rainfall are preliminary data.

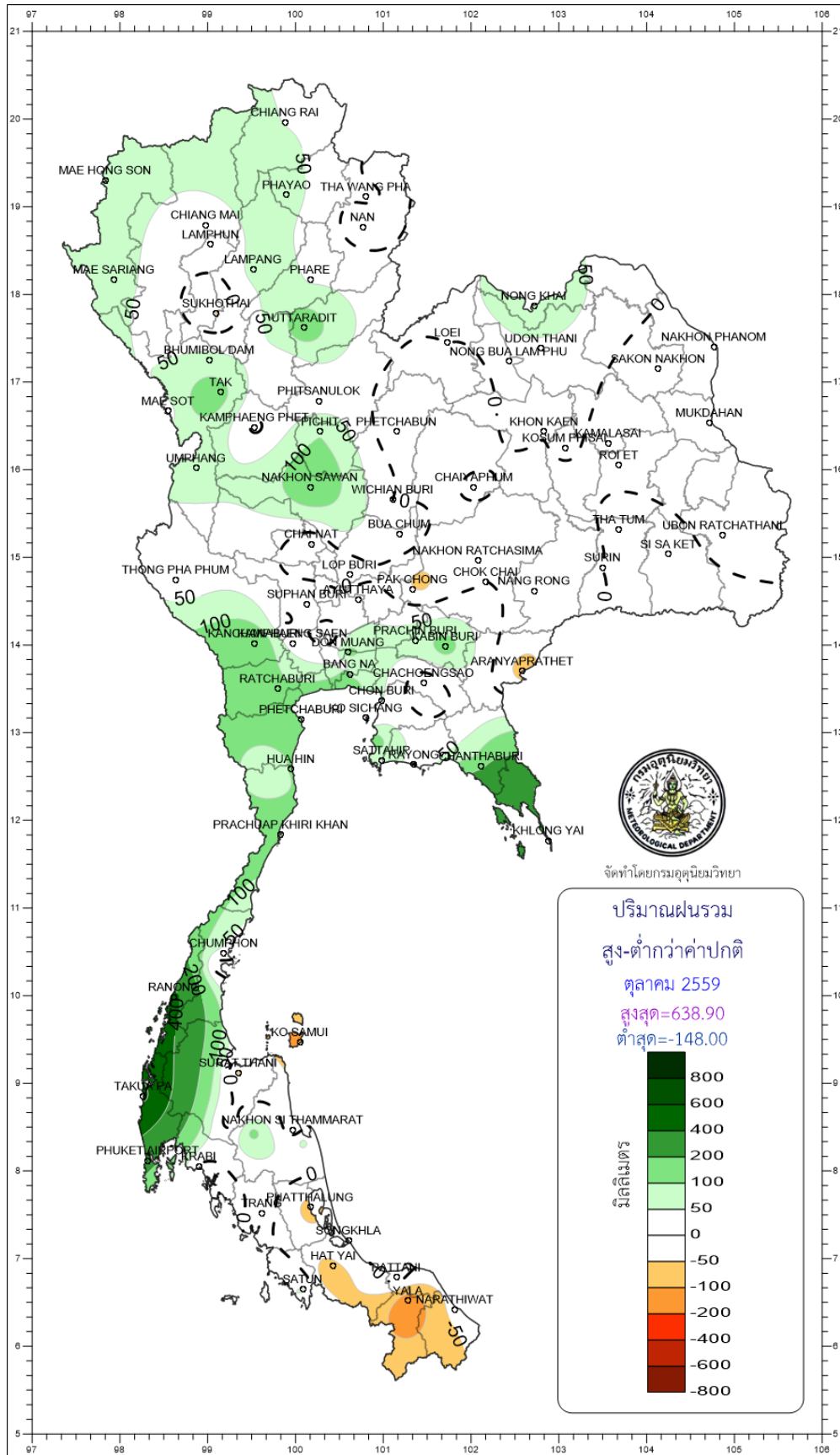
Monthly Current Report

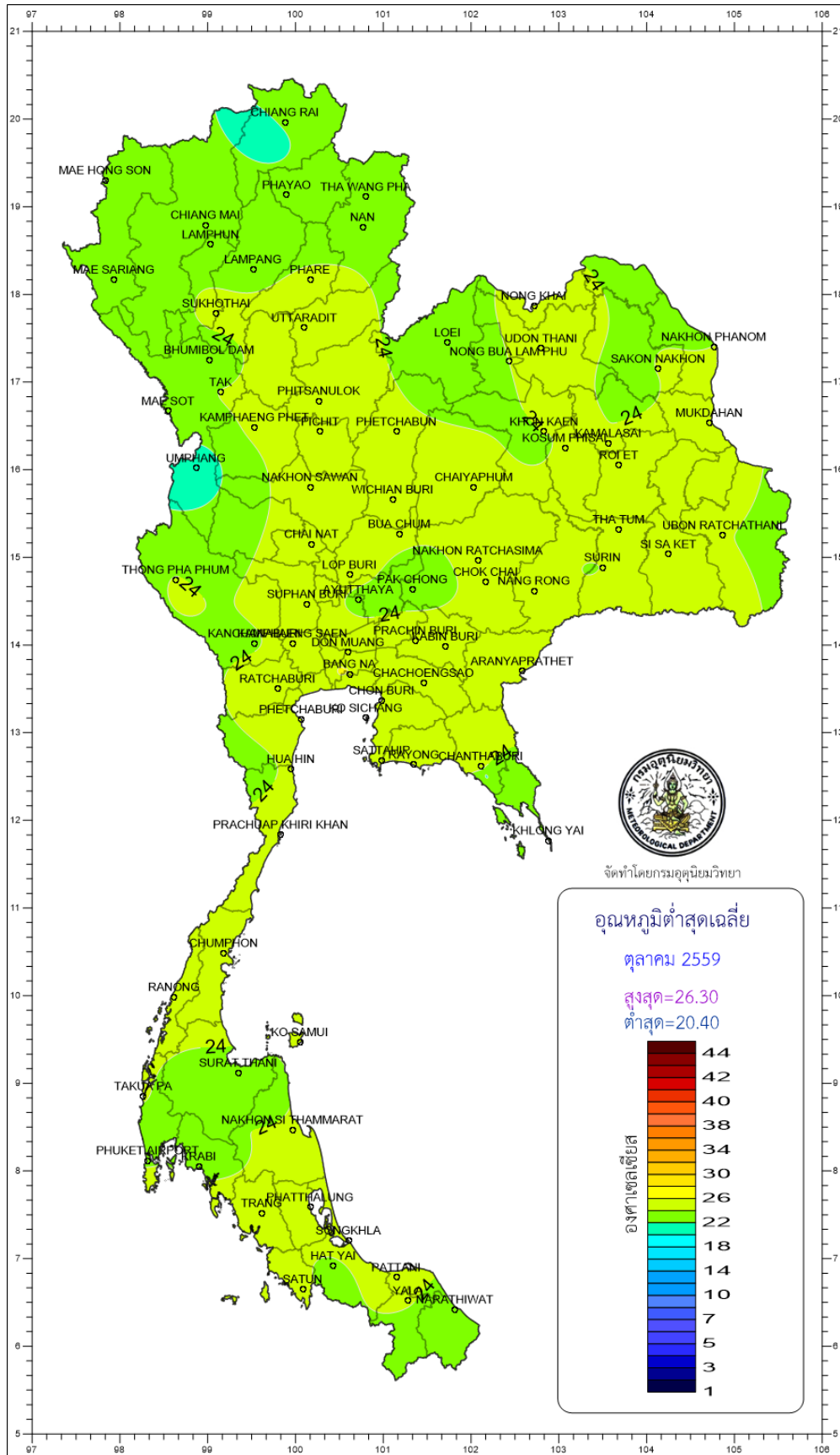
October 2016

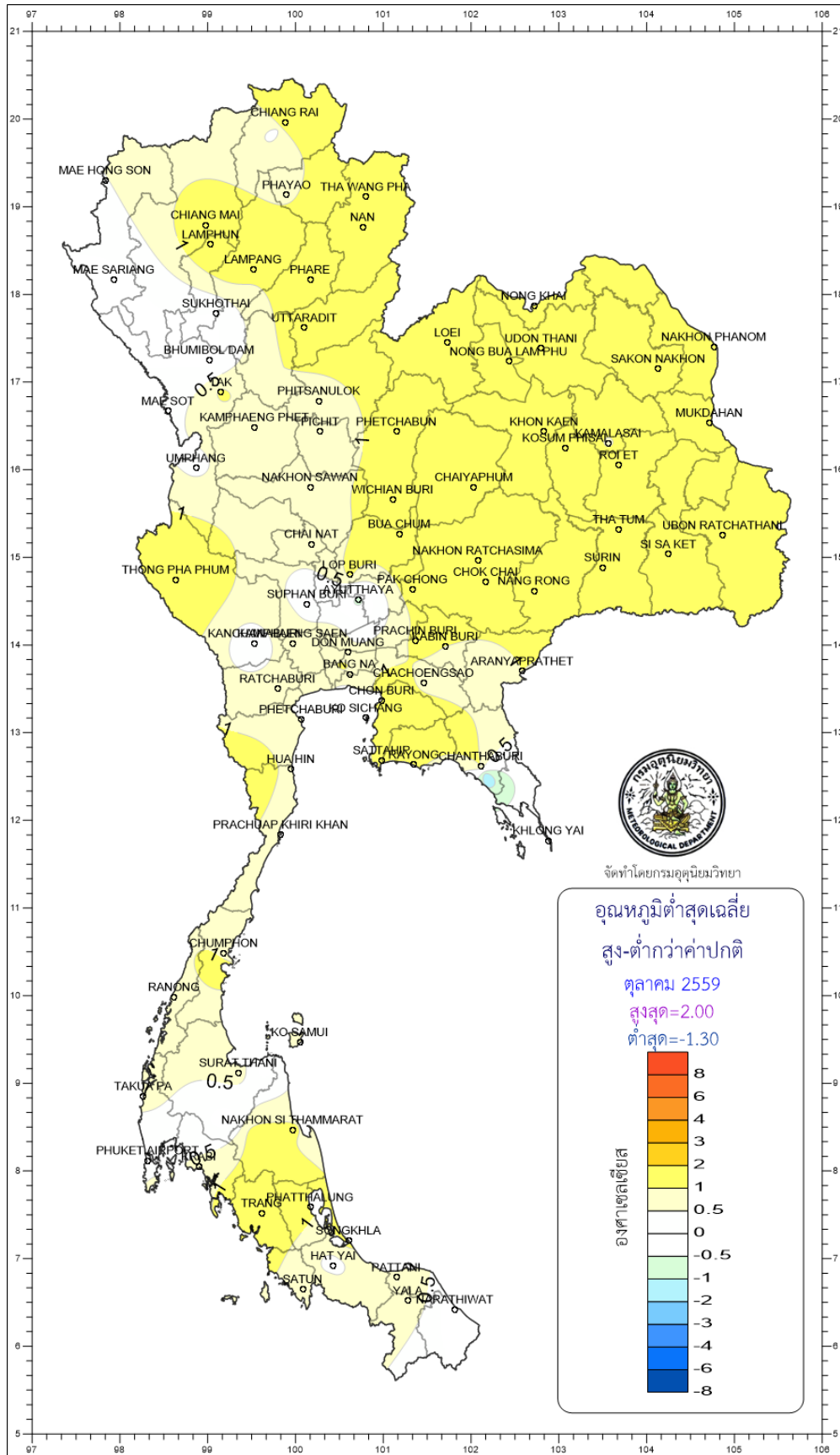
Region	Station	Temperature (°c)		Rainfall (mm)		Accumulative rainfall (mm) Since 1 January	
		Mean	Above or below normal	Actual	Above or below normal	Actual	Above or below normal
North	Chiang Rai	26.5	1.4	164.0	39.1	1818.7	201.4
	Mae Hong Son	27.3	0.9	132.5	18.0	1074.2	-162.9
	Phayao	26.4	1.1	192.1	69.5	963.1	-125.7
	Chiang Mai	27.6	1.5	141.7	24.1	1068.0	7.2
	Tha Wang Pha	27.4	1.6	96.9	13.5	1666.0	296.5
	Nan	27.8	1.4	49.9	-20.4	1401.9	194.5
	Lamphun	27.2	1.1	136.0	25.9	1282.2	329.9
	Lampang	27.2	0.9	172.8	74.5	1075.9	66.9
	Mae Sariang	27.1	1.0	189.9	74.7	964.1	-142.0
	Phrae	27.6	1.1	132.2	43.4	1278.7	197.3
	Uttaradit	28.6	0.9	255.0	144.0	1328.8	-11.1
	Bhumibol Dam	27.4	1.0	277.3	73.0	1039.2	47.8
	Tak	27.8	1.0	320.5	121.3	1039.9	38.5
	Mae Sot	27.0	0.9	135.2	33.1	1182.0	-256.0
	Umphang	25.2	1.3	228.7	72.9	1349.1	-81.9
	Phitsanulok	28.4	0.6	186.8	24.3	1322.7	50.2
	Lom Sak	27.7	0.9	55.0	-33.5	1061.6	36.9
	Phetchabun	28.1	1.3	49.1	-41.3	1012.4	-101.6
	Wichian Buri	28.4	0.7	131.1	-0.5	1066.5	-129.5
Kamphaeng Phet	28.2	1.0	178.2	-13.5	1147.9	-108.0	
Northeast	Nong Khai	28.4	1.7	189.4	98.5	1929.3	340.6
	Loei	27.0	1.4	133.5	10.2	1276.7	64.5
	Udon Thani	28.0	1.1	125.6	35.5	1414.8	9.6
	Nakhon Phanom	27.9	1.5	62.5	-34.5	2343.6	11.3
	Sakon Nakhon	27.8	1.4	46.2	-30.7	1322.8	-304.7
	Mukdahan	27.9	1.6	58.7	-41.9	1282.0	-182.1
	Khon Kaen	27.5	1.0	154.9	37.2	1224.6	-2.2
	Kosum Phisai	28.3	1.2	118.6	7.2	1695.9	453.4
	Roi Et	28.3	1.6	99.9	-7.4	1460.7	136.0
	Chaiyaphum	28.1	1.1	144.3	7.3	1209.4	95.3
	Ubon Ratchathani	28.1	1.3	93.0	-30.1	1885.7	327.6
	Tha Tum	28.3	1.3	141.1	14.8	1319.5	-46.4
	Surin	27.8	1.1	135.8	7.6	1357.8	-43.8
	Nakhon Ratchasima	27.9	1.2	118.8	-27.5	1184.8	139.9
	Chok Chai	27.7	1.1	165.2	0.9	973.9	-68.3
Nang Rong	27.4	0.9	122.0	-11.9	1260.9	107.6	
Central	Nakhon Sawan	28.4	0.7	320.5	167.1	1480.0	362.3
	Bua Chum	28.0	0.8	173.0	45.7	1092.7	32.0
	Lop Buri	28.5	0.7	130.7	-23.0	1097.8	10.3
	Suphan Buri	28.9	0.9	245.8	49.1	1001.9	77.3
	Thong Pha Phum	27.5	0.9	186.0	13.7	1325.9	-430.3
	Kanchanaburi	28.4	1.1	388.3	179.1	1182.3	190.7
	Bangkok Airport	28.5	0.3	312.7	120.8	1655.7	323.9
	Bangkok Metropolis	28.7	0.6	293.8	1.7	1876.8	284.4
East	Prachin Buri	28.8	0.7	240.7	79.8	1702.9	-83.7
	Kabin Buri	28.0	0.5	286.4	131.9	1549.8	-14.0
	Aranyaprathet	28.4	0.9	100.2	-74.0	958.6	-345.9
	Chon Buri	28.9	1.0	261.3	52.4	1369.7	128.4
	Ko Sichang	28.3	0.8	187.2	-19.9	980.9	-168.9
	Pattaya	27.8	0.8	367.5	151.4	1278.9	248.6
	Sattahip	27.6	0.3	300.6	40.8	1378.9	198.9
	Rayong	27.9	0.3	190.1	-4.3	1231.5	-95.0
	Chanthaburi	27.6	0.6	437.3	139.7	3277.2	344.3
Khlung Yai	26.9	0.1	671.8	294.4	5575.6	824.7	
South (East Coast)	Phetchaburi	28.1	0.4	448.5	170.1	1054.2	172.3
	Hua Hin	27.7	0.3	354.1	107.9	804.2	-41.8
	Prachuap Khiri Khan	27.4	0.3	367.5	139.7	1023.0	100.7
	Chumphon	26.9	0.3	287.3	35.7	1198.9	-262.6
	Surat Thani	26.8	0.4	180.3	-56.1	804.5	-358.2
	Ko Samui	28.3	1.1	187.3	-122.5	855.1	-388.1
	Nakhon Si Thammarat	27.3	0.6	272.3	-30.7	958.5	-455.1
	Songkhla	28.2	0.9	253.5	-3.6	1013.1	-63.0
	Hat Yai Airport	27.3	0.8	137.2	-90.6	772.4	-369.1
	Pattani Airport	27.5	0.6	249.0	32.8	915.9	-164.3
Narathiwat	28.0	1.1	224.2	-30.2	1314.5	-25.7	
South (West Coast)	Ranong	26.4	0.0	872.8	448.3	4619.4	748.8
	Takua Pa	26.3	-0.2	1156.7	638.9	5550.0	2195.0
	Phuket	27.6	0.2	449.9	129.8	2304.5	334.8
	Phuket Airport	27.5	0.5	614.4	261.0	3516.0	1316.2
	Ko Lanta	28.2	0.9	281.3	-44.1	2259.8	285.9
	Trang Airport	27.2	0.8	306.3	20.8	2055.4	236.2
	Satun	27.1	0.3	392.1	53.1	1550.9	-418.2
	Over the area	27.7	0.9	239.8	52.6	1526.0	84.9
					28%		6%

- NOTES :
- 1) Mean temperature is the average of daily dry-bulb temperature
 - 2) "T" is trace, rainfall amount less than 0.1 mm.
 - 3) "blank" is incomplete data
 - 4) Temperature and rainfall are preliminary data









CHIANG RAI
 MAE HONG SON
 PHAYAO
 THA WANG PHA
 NAN
 CHIANG MAI
 LAMPHUN
 LAMPANG
 PHARE
 MAE SARIANG
 SUKHOTHAI
 UTTARADIT
 NONG KHAI
 LOEI
 UDON THANI
 NAKHON PHANOM
 BHUMBOL DAM
 NONG BUA LAMPHU
 SAKON NAKHON
 MAE SOT
 PHITSANULOK
 KHON KAEN
 KAMALASAI
 MUKDAHAN
 KAMPHAENG PHET
 PHICHIT
 PHETCHABUN
 KOSUM PHISA
 ROTET
 UMPHANG
 NAKHON SAWAN
 WICHIAN BURI
 CHAIYAPHUM
 THONG PHA PHUM
 CHAI NAT
 BUA CHUM
 CHAYAPHUM
 THA TUM
 UBON RATCHATHANI
 LOP BURI
 NAKHON RATCHASIMA
 SURIN
 SI SA KET
 SUPHAN BURI
 PAK CHONG
 CHOK CHAI
 NANG RONG
 KANGKRAPIANG
 PHRAE
 DON MUANG
 PRACHIN BURI
 BABIN BURI
 RATCHABURI
 BANG NAI
 NACHOENGSAO
 ARANYAPRATHET
 CHON BURI
 PHETCHABURI
 SICHANG
 HUAHIN
 SATTAKU
 WONGCHANTHABURI
 PRACHUAP KHIRI KHAN
 KHLONG YAI
 CHUMPHON
 RANONG
 KO SAMUI
 SURAT THANI
 TAKUAPA
 NAKHON SI THAMMARAT
 PHUKET AIRPORT
 TRANG
 PHATTHALUNG
 SONGKHLA
 HAT YAI
 RATTANI
 SATUN
 YALA
 NARATHIWAT