

Monthly Weather Summary in Thailand March 2017

In March 2017, the weather condition still remained cool in the morning in the northern and northeastern parts with cold weather in some areas of the upper northern during early and mid-month. Meanwhile, daytime temperature was obviously increased and successive hot weather was pronounced since March 3 which regarded as the beginning of summer in Thailand. Besides, during mid and late month, the heat low pressure cell dominating over the upper Thailand caused increasing temperature with the occurring of very hot weather in some areas at that time. Mean temperature of March were above normal in almost regions except for in the northeastern part and southern part (west coast) were slightly below normal. For rainfall, due to the influence of the high pressure area from China extending its ridge to cover upper Thailand, the passage of the westerly trough over the northern and northeastern parts accompanied with the prevailing of the southerly and southeasterly wind for few days, upper Thailand received unseasonable rain mainly during the second half of the period with thundershower, gusty wind and hail occurred in some areas. In southern part, the easterly wind prevailed over the southern part and the Gulf of Thailand, much rainfall was observed at that time. Monthly rainfall was above normal in almost parts of the country i.e. northeastern part 63.4 mm (142%), central part 29.0 mm (81%), eastern part 17.5 mm (28%), southern part (east coast) 16.5 mm (24%) and southern part (west coast) 44.6 mm (50%) while the northern part was slightly below normal 0.3 mm (1%).

1 – 10 March: During early period, the high pressure areas from China extending its ridge to cover upper Thailand and the South China Sea coupled with the prevailing of the active northeast monsoon over the Gulf of Thailand and southern part. These caused morning cool weather in the northern and northeastern parts with cold weather in some areas. The lowest minimum temperature was 13.6 °C at Mae Sariang in Mae Hong Son province on March 1. However, daytime temperature was increasing with generally hot weather in upper Thailand from the middle of the period. The highest maximum temperature was 39.0 °C at Bua Chum, Chai Badan in Lop Buri province on March 7. For rainfall, there was unseasonable rainfall in upper Thailand during late period mainly in the northeastern part where obtained scattered rain with heavy to very heavy rainfall in some areas. The maximum daily rainfall of 101.0 mm was measured at Tao Ngoi in Sakon Nakhon province on March 8. Thundershower occurred at Khon Kean and Mahasarakham provinces on March 7 and at Tak, Buriram and Nakhon Sawan provinces on March 8 and at Phrae, Kamphaeng Phet, Sukhothai and Chaiyaphum [provinces on March 9. Southern part obtained scattered rain with heavy rainfall in some areas along the east coast during early period after that isolated rain. The highest daily rainfall was 59.0 mm at Surat Thani Agrometeorological Station on March 1.

11 – 20 March: During the first half of the period, heat low pressure cell covering upper Thailand accompanied with the prevailing of the southeasterly wind over the northeastern and eastern parts after that the high pressure areas from China extended its ridge to cover upper Thailand and the South China Sea coupled with the passage of the westerly trough over upper northern part. These caused generally hot weather in most areas of upper Thailand with very hot weather in some areas except for the northeastern part that decreasing in temperature in several places during the second half of the period. The highest maximum temperature was 41.0 °C at Amphoe Mueang in Kanchanaburi province on March 14. For rainfall, unexpected rainfall was found in the northeastern and eastern parts during the second half of the period while scanty rain was observed in the northern and central parts for few days. The highest daily rainfall of 110.7 mm was recorded at Tha Uthen in Nakhon Phanom province on March 16. Thunderstorm occurred at Ubon Ratchathani province on March 14 and at Surin province on March 15 and at Lop Buri and Prachin Buri provinces on March 16 and at Sukhothai, Nakhon Ratchasima, Kalasin and Nong Khai provinces on March 17. Hail was reported at Phetchabun and Loei provinces on March 16 and at Loei and Sakon Nakhon provinces on March 17 and at Chiang Rai and Udon Thani on March 19. In southern Thailand, rainfall was measured during the second half of the period especially during late period that obtained scattered rainfall with the highest daily rainfall of 133.0 mm at Ban Na San in Surat Thani province on March 20.

21 – 31 March: The combination of the high pressure area extending to cover upper Thailand, the passage of the westerly trough to the northern and upper northeastern parts and the prevailing of the southerly and southeasterly wind over upper Thailand led to more rain nearly all areas of Thailand especially in upper Thailand that experienced unusual rainfall during the second half of the period inducing temperature decreased in several places. The maximum daily rainfall in upper Thailand was 141.5 mm at Don Tum in Nakhon Pathom province on March 26 with flooding in Nakhon Ratchasima province on March 26 and at Rayong province on March 29. In southern part, isolated to scattered rain with heavy rainfall in some areas was observed during the first half of the period after that rainfall relatively increased to fairly widespread to widespread rain with heavy rainfall in many areas and very heavy rainfall in some areas mainly along the east coast by the effect of the easterly wind prevailed over the southern part and the Gulf of Thailand at that time. The maximum daily rainfall of 96.7 mm was recorded at Khuan Don in Satun province on March 27. However, hot weather remained in upper Thailand in particularly the northern and central parts that observed generally hot weather nearly the whole period with very hot weather in some areas. The highest temperature was of 41.3 °C at Thoen in Lampang province on April 26.

Note : Rainfall, temperatures and natural disasters in this report were updated up to April 7, 2017.

Climatological Center
Meteorological Development Bureau
Meteorological Department

Monthly Current Report
Rainfall and Accumulative Rainfall
March 2017

Northern Thailand

Station	Temperature (°c)		Rainfall (mm)		Accumulative rainfall (mm) Since 1 January	
	Mean	Above or below normal	Actual	Above or below normal	Actual	Above or below normal
Chiang Rai	25.9	1.3	12.2	-16.0	86.7	37.2
Mae Hong Son	27.6	0.9	0.0	-16.8	11.1	-18.1
Phayao	27.5	1.1	1.2	-29.0	64.2	19.1
Chiang Mai	29.1	2.0	0.0	-17.8	27.4	-3.5
Tha Wang Pha	27.2	1.3	25.1	-8.4	62.9	13.4
Nan	28.4	1.6	43.6	10.9	87.4	38.4
Lamphun	28.8	1.1	0.0	-13.1	36.4	15.6
Lampang	29.4	1.4	109.4	86.6	189.8	155.4
Mae Sariang	26.8	0.8	0.0	-14.2	9.9	-12.3
Phrae	28.7	0.8	47.8	20.2	74.9	32.7
Uttaradit	29.4	0.7	33.8	10.4	74.1	30.7
Bhumibol Dam	30.7	1.0	1.2	-19.9	32.9	2.3
Tak	30.8	0.6	0.0	-12.1	43.9	21.0
Mae Sot	28.6	1.4	0.0	-15.5	12.3	-13.1
Umphang	25.6	1.2	43.7	-4.2	51.3	-12.5
Phitsanulok	29.5	0.3	77.3	50.6	119.7	75.6
Lom Sak	28.7	0.7	33.2	-10.6	37.3	-28.4
Phetchabun	29.4	0.7	40.9	-7.0	102.0	32.4
Wichian Buri	30.0	0.5	29.4	-21.2	34.3	-36.6
Kamphaeng Phet	29.5	0.8	56.9	20.2	73.1	21.0
Over the area	28.6	1.0	27.8	-0.3 -1%	61.6	18.5 43%

Northeastern Thailand

Station	Temperature (°c)		Rainfall (mm)		Accumulative rainfall (mm) Since 1 January	
	Mean	Above or below normal	Actual	Above or below normal	Actual	Above or below normal
Nong Khai	27.9	0.3	79.0	39.2	81.6	16.2
Loei	26.8	-0.1	71.8	32.5	82.1	20.5
Udon Thani	27.7	-0.3	132.9	83.2	146.5	68.5
Nakhon Phanom	27.1	0.1	122.6	62.5	145.7	51.6
Sakon Nakhon	26.7	-0.5	191.6	134.1	209.0	117.5
Mukdahan	27.5	-0.2	84.4	45.6	85.3	25.4
Khon Kaen	28.1	-0.4	44.4	2.3	50.2	-17.3
Kosum Phisai	28.2	-0.2	129.8	78.0	136.3	66.0
Roi Et	27.9	-0.3	104.9	63.7	111.5	47.5
Chaiyaphum	28.8	0.0	111.5	60.2	113.0	42.9
Ubon Ratchathani	28.8	-0.1	43.8	13.3	44.6	-3.3
Tha Tum	28.8	0.1	53.8	9.6	58.3	-7.1
Surin	28.6	-0.1	94.4	48.8	100.7	38.0
Nakhon Ratchasima	28.7	-0.2	248.1	211.0	254.2	192.8
Chok Chai	28.7	0.2	111.8	74.3	121.2	64.9
Nang Rong	28.0	-0.4	104.6	56.7	108.1	35.9
Over the area	28.0	-0.2	108.1	63.4 142%	115.5	47.5 70%

- NOTES :
- 1) Mean temperature is the average of daily dry-bulb temperature
 - 2) "T" is trace, rainfall amount less than 0.1 mm.
 - 3) "blank" is incomplete data.
 - 4) Temperature and rainfall are preliminary data.

Monthly Current Report
Rainfall and Accumulative Rainfall
March 2017

Central Thailand

Station	Temperature (°c)		Rainfall (mm)		Accumulative rainfall (mm) Since 1 January	
	Mean	Above or below normal	Actual	Above or below normal	Actual	Above or below normal
Nakhon Sawan	30.6	0.4	26.1	-7.0	73.9	24.6
Bua Chum	29.6	0.1	37.4	-8.4	41.4	-20.2
Lop Buri	30.1	0.6	80.9	48.8	95.0	50.3
Suphan Buri	30.1	1.1	96.9	78.0	110.9	81.4
Thong Pha Phum	29.6	0.8	50.8	4.4	76.5	8.3
Kanchanaburi	30.5	0.8	41.4	12.4	89.1	38.6
Bangkok Airport	30.0	0.5	80.2	39.8	97.3	36.5
Bangkok Metropolis	30.2	0.7	106.3	64.2	151.4	76.0
Over the area	30.1	0.6	65.0	29.0 81%	91.9	36.9 67%

Eastern Thailand

Station	Temperature (°c)		Rainfall (mm)		Accumulative rainfall (mm) Since 1 January	
	Mean	Above or below normal	Actual	Above or below normal	Actual	Above or below normal
Prachin Buri	29.9	0.4	54.9	5.0	64.9	-8.5
Kabin Buri	28.9	-0.2	54.6	3.1	66.8	-18.6
Aranyaprathet	29.2	-0.4	123.5	71.1	262.3	176.9
Chon Buri	29.6	0.4	53.0	5.5	112.6	40.9
Ko Sichang	28.9	0.2	52.9	3.3	176.7	100.5
Pattaya	28.5	0.3	43.0	-10.3	167.2	84.0
Sattahip	28.4	-0.2	29.2	-29.6	154.2	50.4
Rayong	28.8	-0.2	148.2	77.9	256.3	128.8
Chanthaburi	28.5	0.4	73.3	1.4	159.2	32.2
Khlong Yai	28.0	0.1	163.7	48.4	276.9	38.4
Over the area	28.9	0.1	79.6	17.5 28%	169.7	62.4 58%

- NOTES :
- 1) Mean temperature is the average of daily dry-bulb temperature
 - 2) "T" is trace, rainfall amount less than 0.1 mm.
 - 3) "blank" is incomplete data.
 - 4) Temperature and rainfall are preliminary data.

Monthly Current Report
Rainfall and Accumulative Rainfall
March 2017

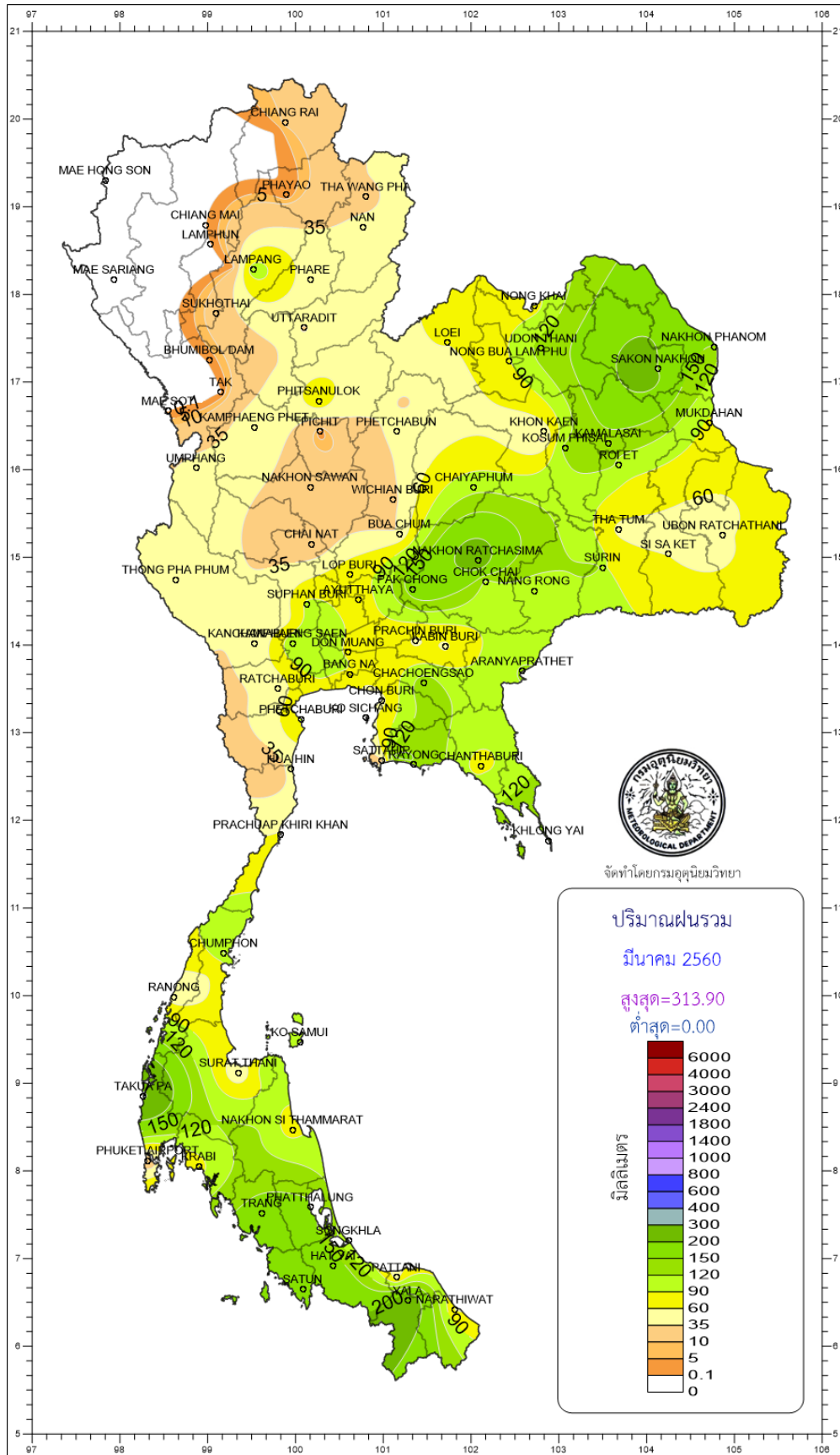
Southern Thailand, east coast

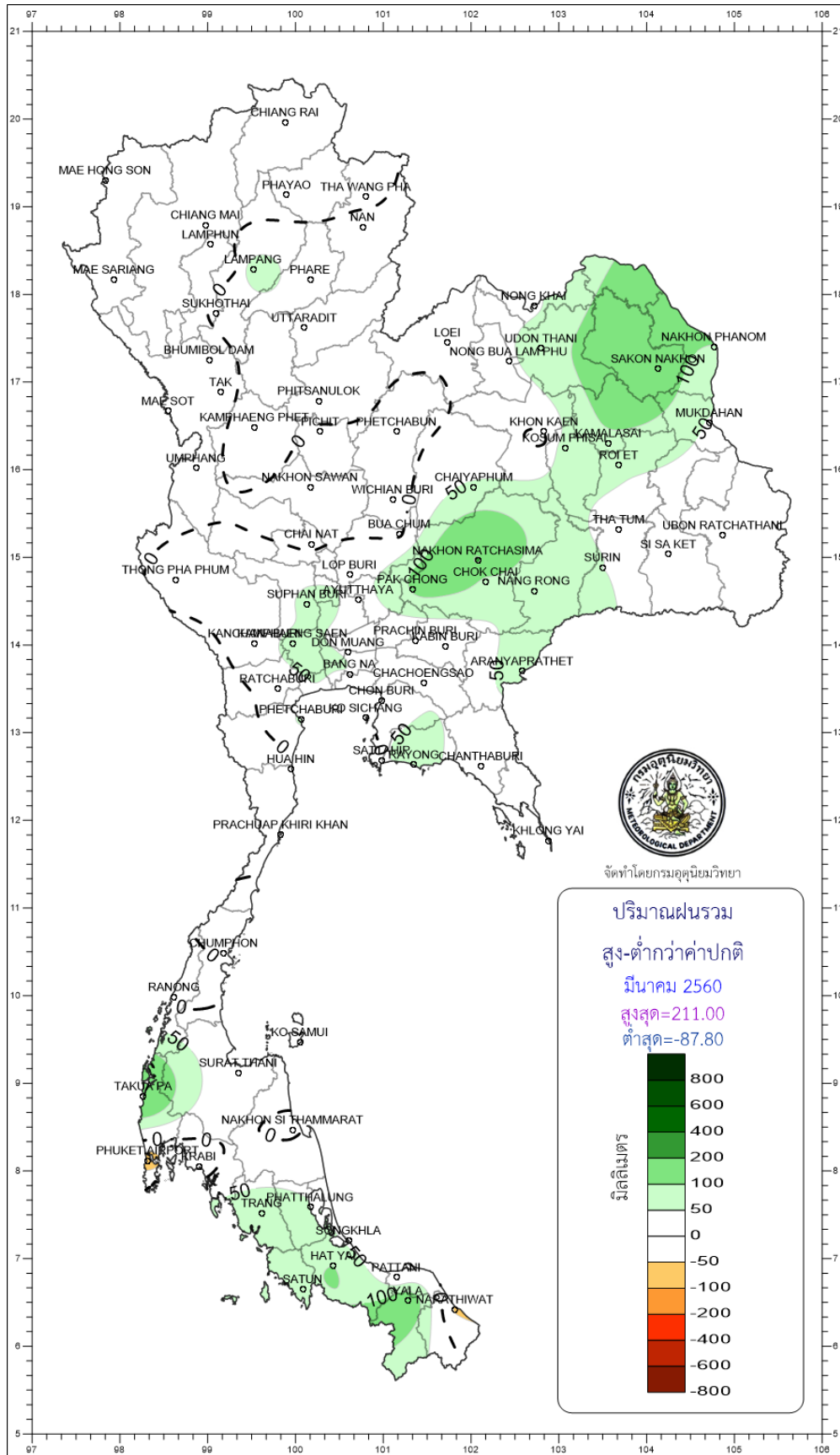
Station	Temperature (°c)		Rainfall (mm)		Accumulative rainfall (mm) Since 1 January	
	Mean	Above or below normal	Actual	Above or below normal	Actual	Above or below normal
Phetchaburi	29.4	0.9	94.2	61.1	263.0	214.6
Hua Hin	28.8	0.4	42.7	-11.2	286.6	205.6
Prachuap Khiri Khan	28.4	0.5	62.0	-9.8	542.9	424.9
Chumphon	27.7	-0.1	120.9	23.7	813.6	612.3
Surat Thani	27.6	0.1	34.9	10.9	366.1	293.0
Ko Samui	27.9	-0.3	120.2	39.4	849.5	628.1
Nakhon Si Thammarat	27.5	0.1	74.6	-15.1	1962.6	1659.3
Songkhla	28.0	-0.1	99.2	39.5	804.1	621.0
Hat Yai Airport	27.5	-0.1	175.2	100.1	597.2	443.9
Pattani Airport	27.6	0.3	51.1	1.7	670.5	538.2
Narathiwat	27.5	0.2	59.2	-58.2	1372.9	1100.2
Over the area	28.0	0.2	84.9	16.5 24%	775.4	612.8 377%

Southern Thailand, west coast

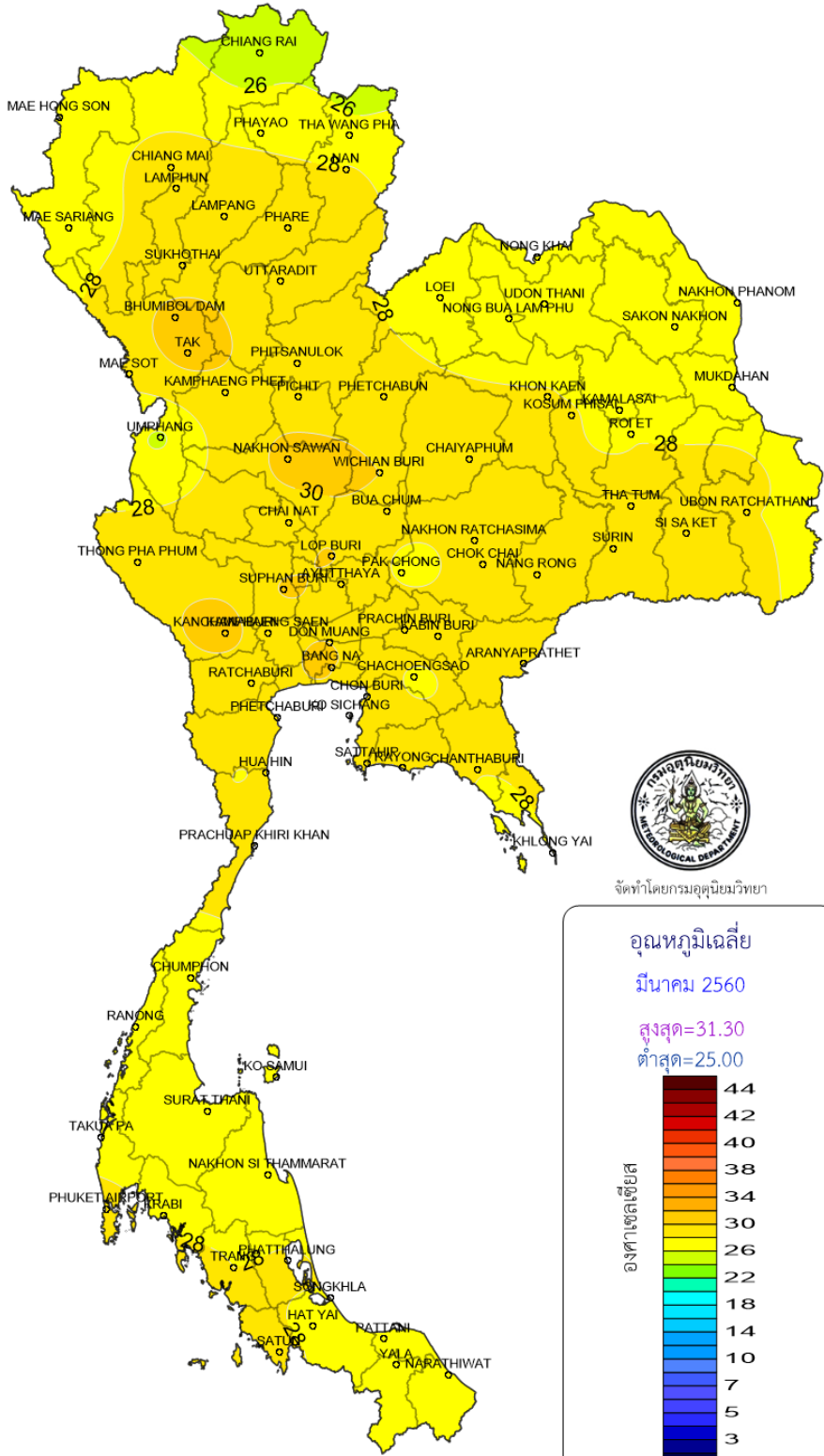
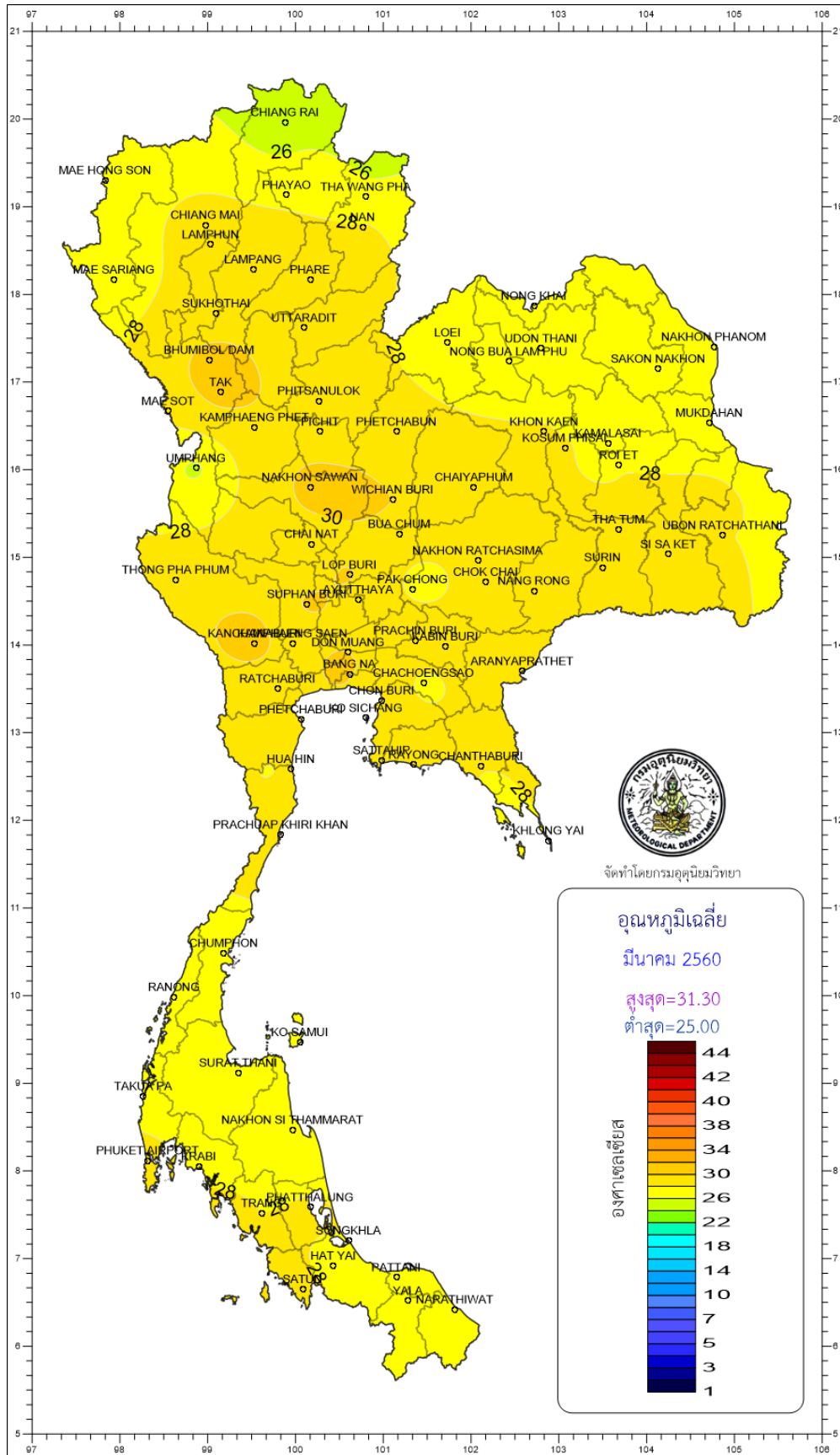
Station	Temperature (°c)		Rainfall (mm)		Accumulative rainfall (mm) Since 1 January	
	Mean	Above or below normal	Actual	Above or below normal	Actual	Above or below normal
Ranong	28.0	-0.4	47.9	-17.3	536.9	445.7
Takua Pa	27.4	-0.3	313.9	199.3	527.8	332.7
Phuket	29.1	-0.1	73.6	0.1	424.2	296.5
Phuket Airport	28.6	0.3	12.5	-87.8	265.6	101.9
Ko Lanta	28.5	-0.3	137.9	75.4	393.0	297.6
Trang Airport	28.0	-0.1	166.5	83.1	532.9	396.2
Satun	28.3	-0.1	181.8	59.8	388.4	199.4
Over the area	28.3	-0.1	133.4	44.6 50%	438.4	295.7 207%

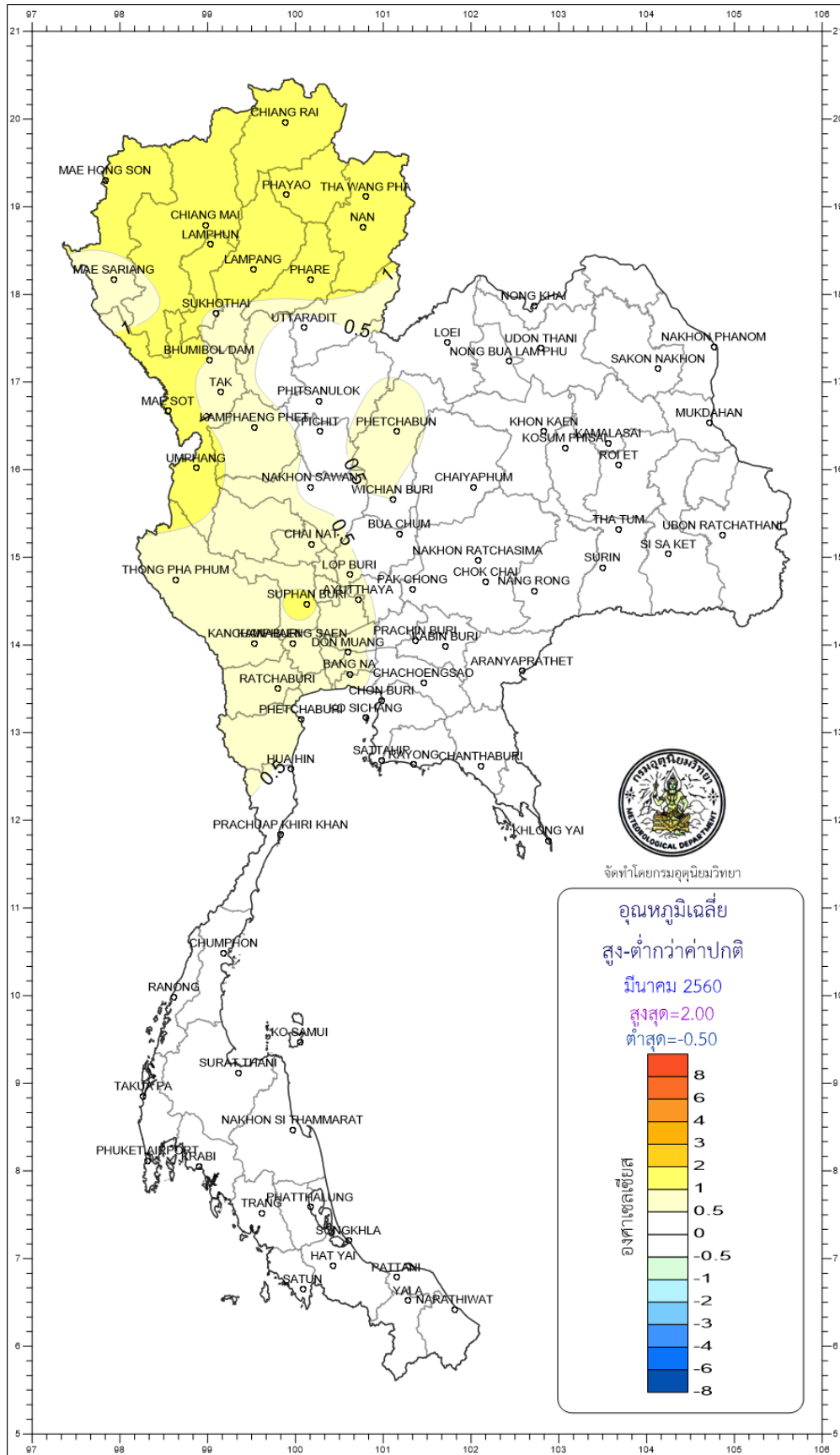
- NOTES :
- 1) Mean temperature is the average of daily dry-bulb temperature
 - 2) "T" is trace, rainfall amount less than 0.1 mm.
 - 3) "blank" is incomplete data.
 - 4) Temperature and rainfall are preliminary data.

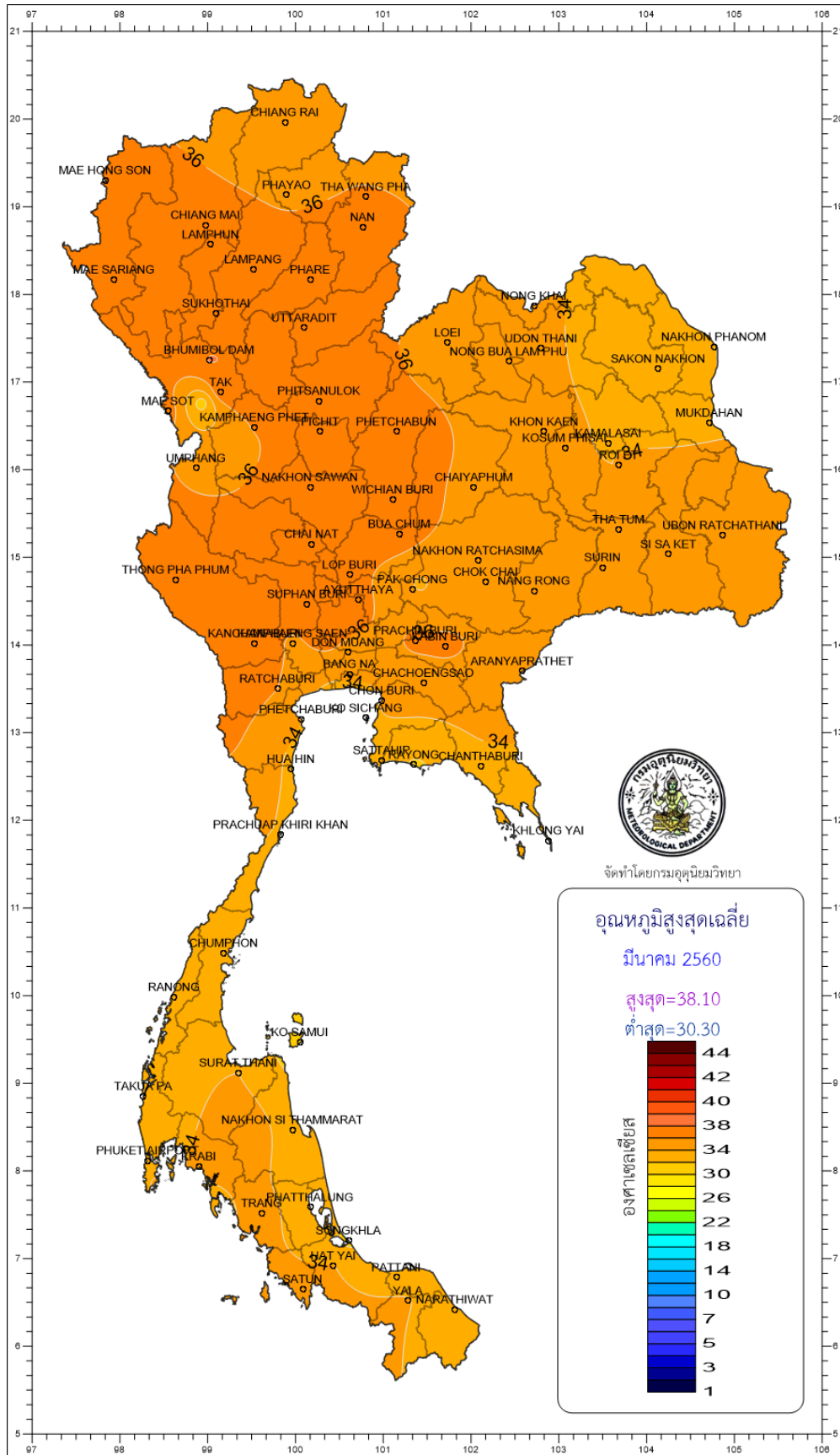


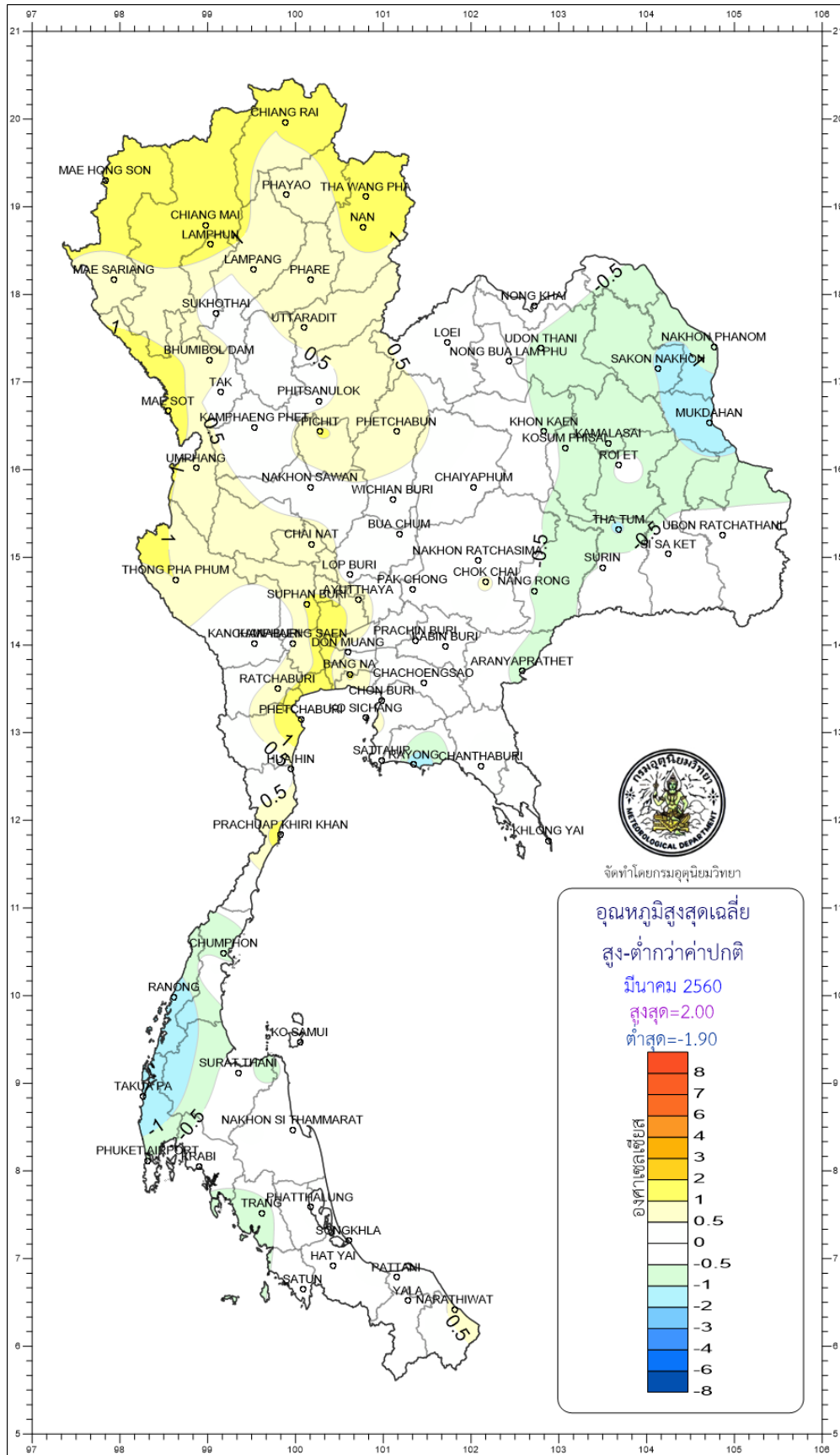


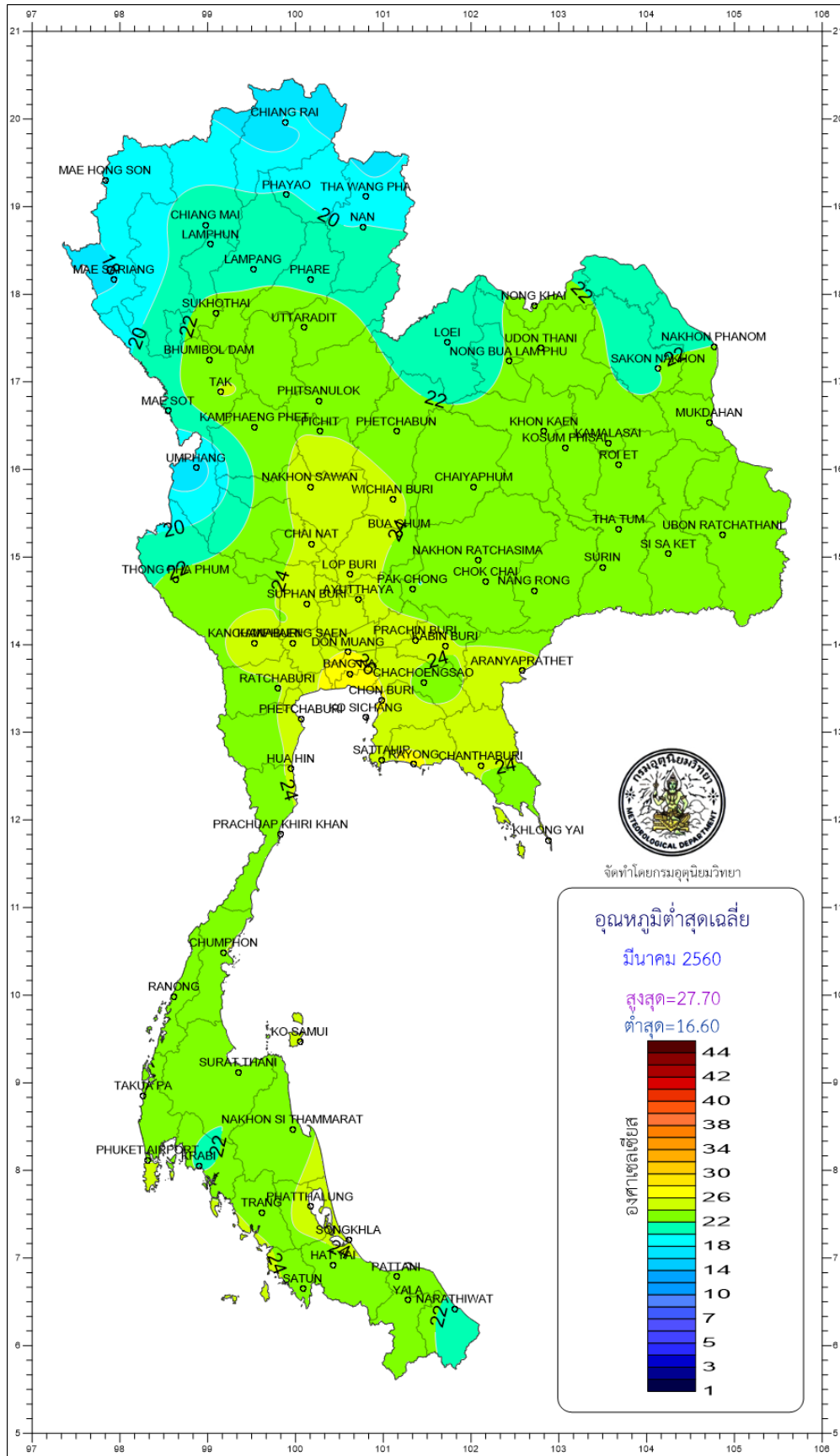
จัดทำโดยกรมอุตุนิยมวิทยา











จัดทำโดยกรมอุตุนิยมวิทยา

