

## Monthly Weather Summary in Thailand January 2015

High pressure area from China occasionally extended its ridge to cover upper Thailand throughout the month. During middle of the month, the weather was dominated by an intense surge of high pressure coupled with an active northeast monsoon, bringing cold with very cold in some areas of northern and northeastern parts. Frosts were also reported in mountainous and mountain top. Mean temperatures for January were slightly below normal nearly the whole country.

By the way, with the passage of the westerly trough, unseasonal rainfall occasionally occurred in some areas of upper Thailand especially northern part. However, monthly rainfall was below normal in northeastern part 0.4 mm (8%), eastern part 10.1 mm (63%), southern part (east coast) 15.4 mm (26%) and southern part (west coast) 8.4 mm (32%) while it was above normal in northern part 39.8 mm (865%) and central part 4.5 mm (67%).

**1-10 January:** High pressure area covered upper Thailand throughout the period and another rather active high pressure area from China extended its ridge to cover the mentioned areas during late period. In addition, northeast monsoon prevailing over Thailand and the Gulf of Thailand intensified at that time. These caused cold weather nearly the whole area in northern and northeastern parts during the first half of the period, then temperature increased but cold weather persisted in some areas. Central, eastern and upper southern parts were generally cool weather with cold in some areas during the first half the period, then temperature slightly increased. The minimum temperature of the period was 8.2 °C, at Umphang in Tak province on January 3. In the Mountainous areas and mountain tops, temperature climbed down to 4.0 °C at Phluang Wildlife Sanctuary in Loei province on January 2. For rainfall, widely scattered to scattered rain with isolated heavy rainfall in upper Thailand during late period particularly in northern part that experienced fairly widespread rain with heavy rainfall in several areas caused by the passage of the westerly trough to the northern and upper northeastern parts at that time. The heaviest daily rainfall of 55.6 mm was measured at Lampang Agromet Stn. in Lampang province on January 9. Southern part obtained widely scattered to scattered rain nearly the whole period with heavy rainfall in some areas. The heaviest daily rainfall of 87.2 mm was measured at Amphoe Waeng in Narathiwat province on January 7.

**11-20 January:** Due to the continuation of the rather active high pressure area covering upper Thailand and rather active northeast monsoon, cold to very cold weather remained in northern and northeastern parts. Cool with cold weather occurred in some areas of central, eastern and upper southern parts. The minimum temperature of the period was 5.7 °C at Nakhon Phanom Agromet Stn. in Nakhon Phanom province on January 14 and was 4.0 °C at Doi Inthanon in Chiang Mai province on January 13-14 and at Phluang Wildlife Sanctuary, Loei province on January 13 and 17. Besides, scanty rainfall was observed in upper Thailand while southern part experienced isolated to widely scattered rain with isolated heavy rainfall mainly along east coast. The heaviest daily rainfall of 76.3 mm was measured at Amphoe Phaprom in Nakhon Si Thammarat province on January 14.

**21-31 January:** Under the influence of the high pressure area, an active northeast monsoon during late period, cold weather persisted in upper northern part with cold weather mainly during the first half of the period from elsewhere. The lowest temperature 4.7 °C was measured at Amphoe Umphang in Tak province on January 24 and was 3.6 °C at Doi Angkhang in Chiang Mai province on January 26 with frost on January 26 and 29. For rainfall, isolated rain occurred in central, eastern and southern parts for few days. The heaviest daily rainfall of 29.0 mm was measured at Bang Na Agromet Stn. In Bangkok on January 31.

**Note :** Rainfall, temperatures and natural disasters in this report were updated up to February 13, 2015.

Monthly Current Report  
Rainfall and Accumulative Rainfall  
January 2015

Northern Thailand

| Station        | Temperature ( °c) |                             | Rainfall (mm) |                             | Accumulative rainfall (mm)<br>Since 1 January |                             |
|----------------|-------------------|-----------------------------|---------------|-----------------------------|---|-----------------------------|
|                | Mean              | Above<br>or below<br>normal | Actual        | Above<br>or below<br>normal | Actual  | Above<br>or below<br>normal |
| Chiang Rai     | 19.6              | -0.1                        | 58.5          | 51.0                        | 58.5  | 51.0                        |
| Mae Hong Son   | 21.3              | 0.7                         | 9.2           | 2.8                         | 9.2   | 2.8                         |
| Phayao         | 19.9              | -0.7                        | 77.2          | 71.5                        | 77.2  | 71.5                        |
| Chiang Mai     | 22.2              | 0.7                         | 78.9          | 74.7                        | 78.9  | 74.7                        |
| Tha Wang Pha   | 20.1              | -0.5                        | 65.5          | 58.5                        | 65.5  | 58.5                        |
| Nan            | 20.9              | -0.5                        | 55.3          | 50.9                        | 55.3  | 50.9                        |
| Lamphun        | 21.8              | 0.1                         | 62.2          | 59.4                        | 62.2  | 59.4                        |
| Lampang        | 21.6              | -0.6                        | 79.5          | 76.7                        | 79.5  | 76.7                        |
| Mae Sariang    | 21.0              | 0.6                         | 28.4          | 26.9                        | 28.4  | 26.9                        |
| Phrae          | 21.4              | -0.9                        | 53.1          | 47.3                        | 53.1  | 47.3                        |
| Uttaradit      | 23.2              | -0.9                        | 43.2          | 37.7                        | 43.2  | 37.7                        |
| Bhumibol Dam   | 22.3              | -1.4                        | 66.5          | 63.9                        | 66.5  | 63.9                        |
| Tak            | 22.9              | -1.2                        | 55.8          | 53.7                        | 55.8  | 53.7                        |
| Mae Sot        | 22.2              | -0.2                        | 66.6          | 64.9                        | 66.6  | 64.9                        |
| Umphang        | 20.0              | -0.2                        | 27.2          | 20.4                        | 27.2  | 20.4                        |
| Phitsanulok    | 23.1              | -1.7                        | 14.8          | 10.9                        | 14.8  | 10.9                        |
| Lom Sak        | 23.1              | -1.2                        | 5.1           | 0.3                         | 5.1   | 0.3                         |
| Phetchabun     | 23.2              | -0.9                        | 0.7           | -4.9                        | 0.7   | -4.9                        |
| Wichian Buri   | 23.6              | -1.7                        | 0.0           | -7.7                        | 0.0   | -7.7                        |
| Kamphaeng Phet | 23.1              | -1.7                        | 40.1          | 37.8                        | 40.1  | 37.8                        |
| Over the area  | 21.8              | -0.6                        | 44.4          | 39.8<br>865%                | 44.4  | 39.8<br>865%                |

Northeastern Thailand

| Station           | Temperature ( °c) |                             | Rainfall (mm) |                             | Accumulative rainfall (mm)<br>Since 1 January |                             |
|-------------------|-------------------|-----------------------------|---------------|-----------------------------|---|-----------------------------|
|                   | Mean              | Above<br>or below<br>normal | Actual        | Above<br>or below<br>normal | Actual  | Above<br>or below<br>normal |
| Nong Khai         | 21.9              | -0.6                        | 15.4          | 7.1                         | 15.4  | 7.1                         |
| Loei              | 20.6              | -1.1                        | 12.0          | 5.8                         | 12.0  | 5.8                         |
| Udon Thani        | 21.7              | -1.1                        | 2.4           | -3.9                        | 2.4   | -3.9                        |
| Nakhon Phanom     | 21.6              | -0.6                        | 6.0           | 3.0                         | 6.0   | 3.0                         |
| Sakon Nakhon      | 21.2              | -0.9                        | 3.2           | -1.5                        | 3.2   | -1.5                        |
| Mukdahan          | 22.1              | -0.5                        | 0.0           | -3.7                        | 0.0   | -3.7                        |
| Khon Kaen         | 22.6              | -0.8                        | 0.0           | -4.0                        | 0.0   | -4.0                        |
| Kosum Phisai      | 22.8              | -0.9                        | 0.0           | -3.5                        | 0.0   | -3.5                        |
| Roi Et            | 23.0              | -0.3                        | 0.0           | -3.6                        | 0.0   | -3.6                        |
| Chaiyaphum        | 23.5              | -0.7                        | 0.0           | -4.5                        | 0.0   | -4.5                        |
| Ubon Ratchathani  | 23.5              | -0.7                        | 0.0           | -2.0                        | 0.0   | -2.0                        |
| Tha Tum           | 23.2              | -0.8                        | 0.0           | -5.1                        | 0.0   | -5.1                        |
| Surin             | 23.6              | -0.5                        | 0.1           | -5.5                        | 0.1   | -5.5                        |
| Nakhon Ratchasima | 23.7              | -0.6                        | 0.9           | -7.3                        | 0.9   | -7.3                        |
| Chok Chai         | 23.2              | -1.2                        | 27.6          | 23.6                        | 27.6  | 23.6                        |
| Nang Rong         | 23.0              | -1.3                        | 2.9           | -1.8                        | 2.9   | -1.8                        |
| Over the area     | 22.6              | -0.8                        | 4.4           | -0.4<br>-8%                 | 4.4   | -0.4<br>-8%                 |

- NOTES :
- 1) Mean temperature is the average of daily dry-bulb temperature
  - 2) "T" is trace, rainfall amount less than 0.1 mm.
  - 3) "blank" is incomplete data.
  - 4) Temperature and rainfall are preliminary data.

Monthly Current Report  
Rainfall and Accumulative Rainfall  
January 2015

Central Thailand

| Station            | Temperature ( °c) |                             | Rainfall (mm) |                             | Accumulative rainfall (mm)<br>Since 1 January |                             |
|--------------------|-------------------|-----------------------------|---------------|-----------------------------|---|-----------------------------|
|                    | Mean              | Above<br>or below<br>normal | Actual        | Above<br>or below<br>normal | Actual  | Above<br>or below<br>normal |
| Nakhon Sawan       | 23.9              | -1.6                        | 7.3           | 3.0                         | 7.3   | 3.0                         |
| Bua Chum           | 23.7              | -1.3                        | 0.4           | -6.3                        | 0.4   | -6.3                        |
| Lop Buri           | 25.3              | -1.1                        | 6.2           | 0.5                         | 6.2   | 0.5                         |
| Suphan Buri        | 24.6              | -1.1                        | 11.5          | 7.8                         | 11.5  | 7.8                         |
| Thong Pha Phum     | 23.3              | -1.5                        | 32.0          | 26.6                        | 32.0  | 26.6                        |
| Kanchanaburi       | 25.0              | -1.0                        | 25.7          | 22.4                        | 25.7  | 22.4                        |
| Bangkok Airport    | 25.7              | -1.3                        | 2.7           | -8.7                        | 2.7   | -8.7                        |
| Bangkok Metropolis | 26.5              | -0.5                        | 3.5           | -9.8                        | 3.5   | -9.8                        |
| Over the area      | 24.8              | -1.1                        | 11.2          | 4.5<br>67%                  | 11.2  | 4.5<br>67%                  |

Eastern Thailand

| Station       | Temperature ( °c) |                             | Rainfall (mm) |                             | Accumulative rainfall (mm)<br>Since 1 January |                             |
|---------------|-------------------|-----------------------------|---------------|-----------------------------|---|-----------------------------|
|               | Mean              | Above<br>or below<br>normal | Actual        | Above<br>or below<br>normal | Actual  | Above<br>or below<br>normal |
| Prachin Buri  | 26.2              | -0.6                        | 6.0           | -1.7                        | 6.0   | -1.7                        |
| Kabin Buri    | 24.7              | -1.6                        | 4.8           | -4.2                        | 4.8   | -4.2                        |
| Aranyaprathet | 25.7              | -0.4                        | 0.0           | -5.4                        | 0.0   | -5.4                        |
| Chon Buri     | 26.5              | -0.4                        | 0.0           | -9.9                        | 0.0   | -9.9                        |
| Ko Sichang    | 25.8              | -0.7                        | 6.2           | -4.7                        | 6.2   | -4.7                        |
| Pattaya       | 25.7              | -0.6                        | 9.4           | -6.2                        | 9.4   | -6.2                        |
| Sattahip      | 25.2              | -1.0                        | 3.8           | -21.8                       | 3.8   | -21.8                       |
| Rayong        | 25.3              | -0.9                        | 1.4           | -19.3                       | 1.4   | -19.3                       |
| Chanthaburi   | 26.3              | -0.1                        | 12.3          | -6.4                        | 12.3  | -6.4                        |
| Khlong Yai    | 26.4              | -0.1                        | 16.2          | -21.0                       | 16.2  | -21.0                       |
| Over the area | 25.8              | -0.6                        | 6.0           | -10.1<br>-63%               | 6.0   | -10.1<br>-63%               |

- NOTES :
- 1) Mean temperature is the average of daily dry-bulb temperature
  - 2) "T" is trace, rainfall amount less than 0.1 mm.
  - 3) "blank" is incomplete data.
  - 4) Temperature and rainfall are preliminary data.

Monthly Current Report  
Rainfall and Accumulative Rainfall  
January 2015

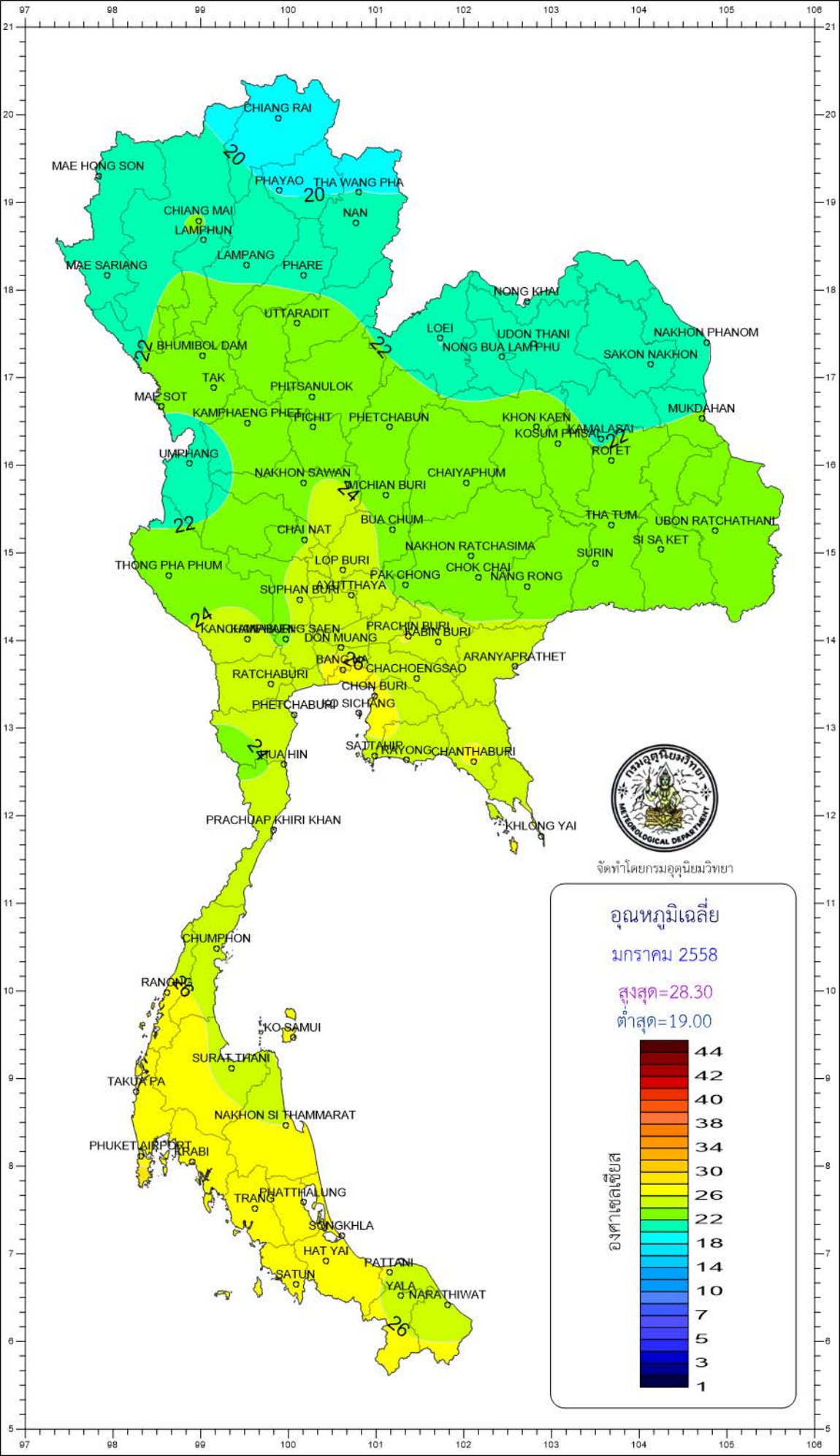
Southern Thailand, east coast

| Station             | Temperature ( °c) |                             | Rainfall (mm) |                             | Accumulative rainfall (mm)<br>Since 1 January |                             |
|---------------------|-------------------|-----------------------------|---------------|-----------------------------|---|-----------------------------|
|                     | Mean              | Above<br>or below<br>normal | Actual        | Above<br>or below<br>normal | Actual  | Above<br>or below<br>normal |
| Phetchaburi         | 25.0              | -0.8                        | 17.3          | 5.9                         | 17.3  | 5.9                         |
| Hua Hin             | 25.3              | -0.7                        | 25.2          | 13.4                        | 25.2  | 13.4                        |
| Prachuap Khiri Khan | 25.1              | -0.3                        | 11.4          | -13.0                       | 11.4  | -13.0                       |
| Chumphon            | 25.2              | -0.5                        | 104.2         | 44.8                        | 104.2   | 44.8                        |
| Surat Thani         | 25.7              | 0.1                         | 28.1          | -8.7                        | 28.1  | -8.7                        |
| Ko Samui            | 26.7              | -0.1                        | 78.1          | -8.1                        | 78.1  | -8.1                        |
| Nakhon Si Thammarat | 26.0              | 0.0                         | 69.5          | -75.9                       | 69.5  | -75.9                       |
| Songkhla            | 27.0              | -0.1                        | 43.2          | -31.6                       | 43.2  | -31.6                       |
| Hat Yai Airport     | 26.0              | 0.0                         | 6.6           | -47.2                       | 6.6   | -47.2                       |
| Pattani Airport     | 26.0              | 0.0                         | 10.2          | -40.7                       | 10.2  | -40.7                       |
| Narathiwat          | 25.9              | -0.2                        | 93.4          | -8.2                        | 93.4  | -8.2                        |
| Over the area       | 25.8              | -0.2                        | 44.3          | -15.4<br>-26%               | 44.3  | -15.4<br>-26%               |

Southern Thailand, west coast

| Station        | Temperature ( °c) |                             | Rainfall (mm) |                             | Accumulative rainfall (mm)<br>Since 1 January |                             |
|----------------|-------------------|-----------------------------|---------------|-----------------------------|---|-----------------------------|
|                | Mean              | Above<br>or below<br>normal | Actual        | Above<br>or below<br>normal | Actual  | Above<br>or below<br>normal |
| Ranong         | 26.5              | -0.2                        | 0.4           | -9.6                        | 0.4   | -9.6                        |
| Takua Pa       | 27.0              | 0.6                         | 32.1          | -7.3                        | 32.1  | -7.3                        |
| Phuket         | 28.3              | 0.2                         | 2.4           | -27.9                       | 2.4   | -27.9                       |
| Phuket Airport | 27.7              | 0.7                         | 18.5          | -17.7                       | 18.5  | -17.7                       |
| Ko Lanta       | 27.6              | 0.0                         | 11.0          | -3.9                        | 11.0  | -3.9                        |
| Trang Airport  | 26.7              | -0.1                        | 26.0          | -6.5                        | 26.0  | -6.5                        |
| Satun          | 27.6              | 0.1                         | 35.9          | 14.7                        | 35.9  | 14.7                        |
| Over the area  | 27.3              | 0.1                         | 18.0          | -8.4<br>-32%                | 18.0  | -8.4<br>-32%                |

- NOTES :
- 1) Mean temperature is the average of daily dry-bulb temperature
  - 2) "T" is trace, rainfall amount less than 0.1 mm.
  - 3) "blank" is incomplete data.
  - 4) Temperature and rainfall are preliminary data.

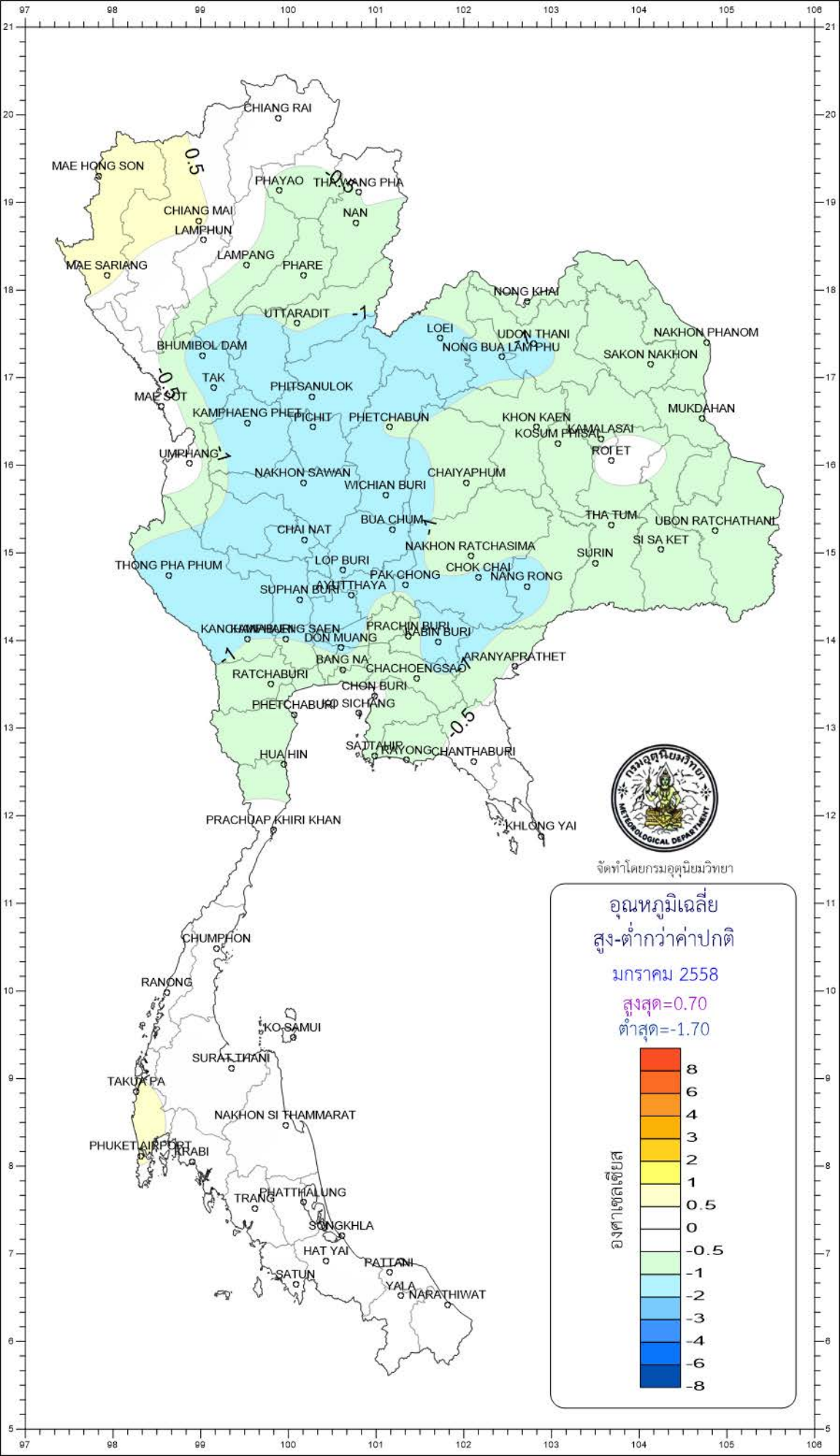


จัดทำโดยกรมอุตุนิยมวิทยา

**อุณหภูมิเฉลี่ย**  
**มกราคม 2558**  
**สูงสุด=28.30**  
**ต่ำสุด=19.00**

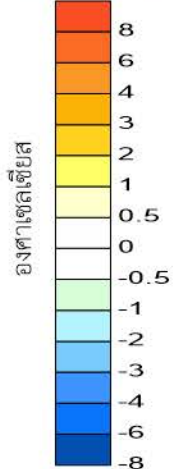
**องศาเซลเซียส**

|    |
|----|
| 44 |
| 42 |
| 40 |
| 38 |
| 34 |
| 30 |
| 26 |
| 22 |
| 18 |
| 14 |
| 10 |
| 7  |
| 5  |
| 3  |
| 1  |

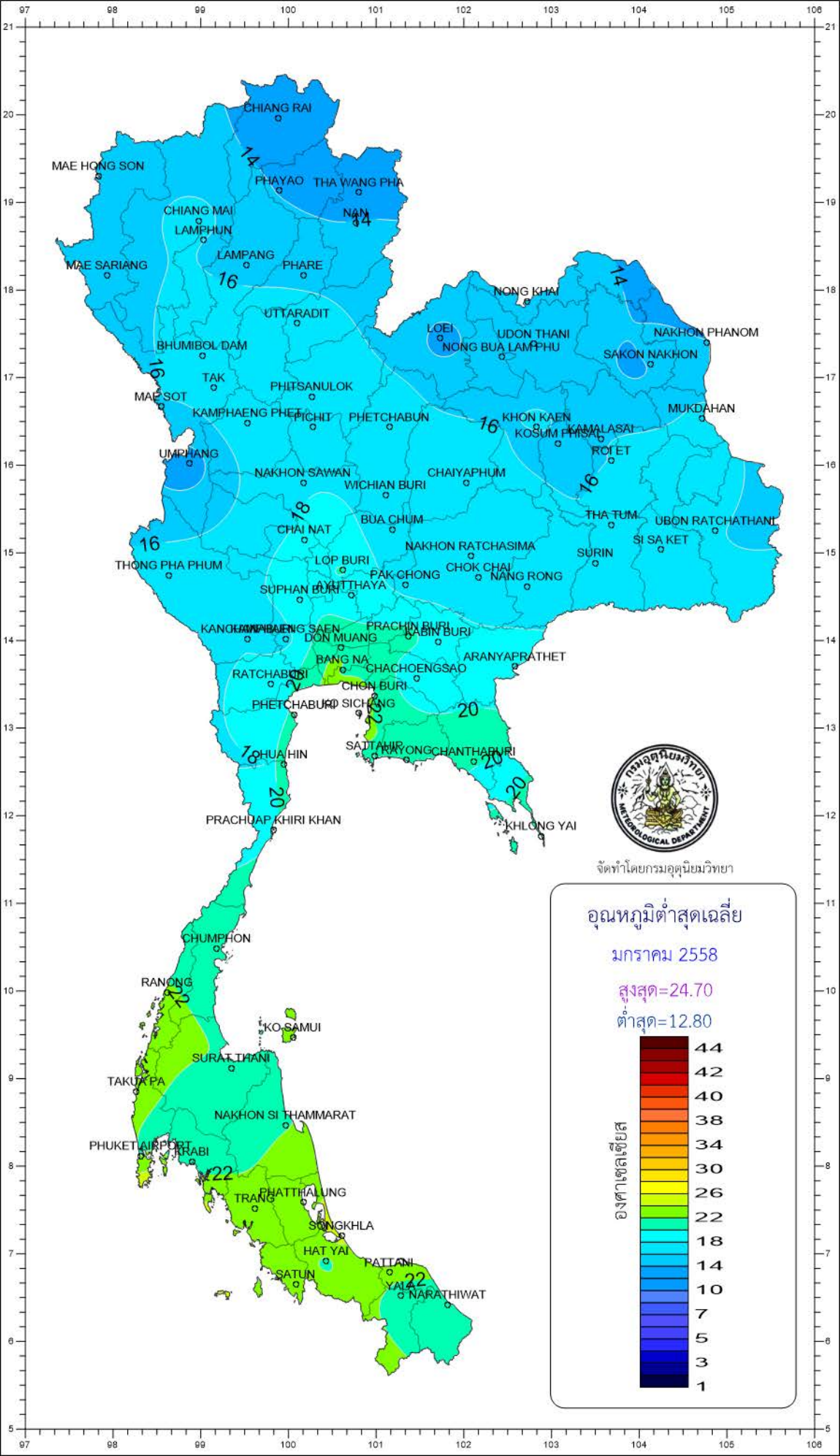


จัดทำโดยกรมอุตุนิยมวิทยา

อุณหภูมิเฉลี่ย  
สูง-ต่ำกว่าค่าปกติ  
มกราคม 2558  
สูงสุด=0.70  
ต่ำสุด=-1.70







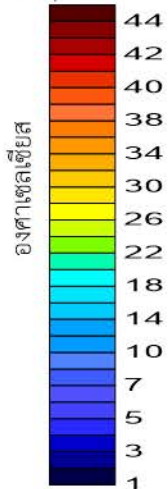
จัดทำโดยกรมอุตุนิยมวิทยา

### อุณหภูมิต่ำสุดเฉลี่ย

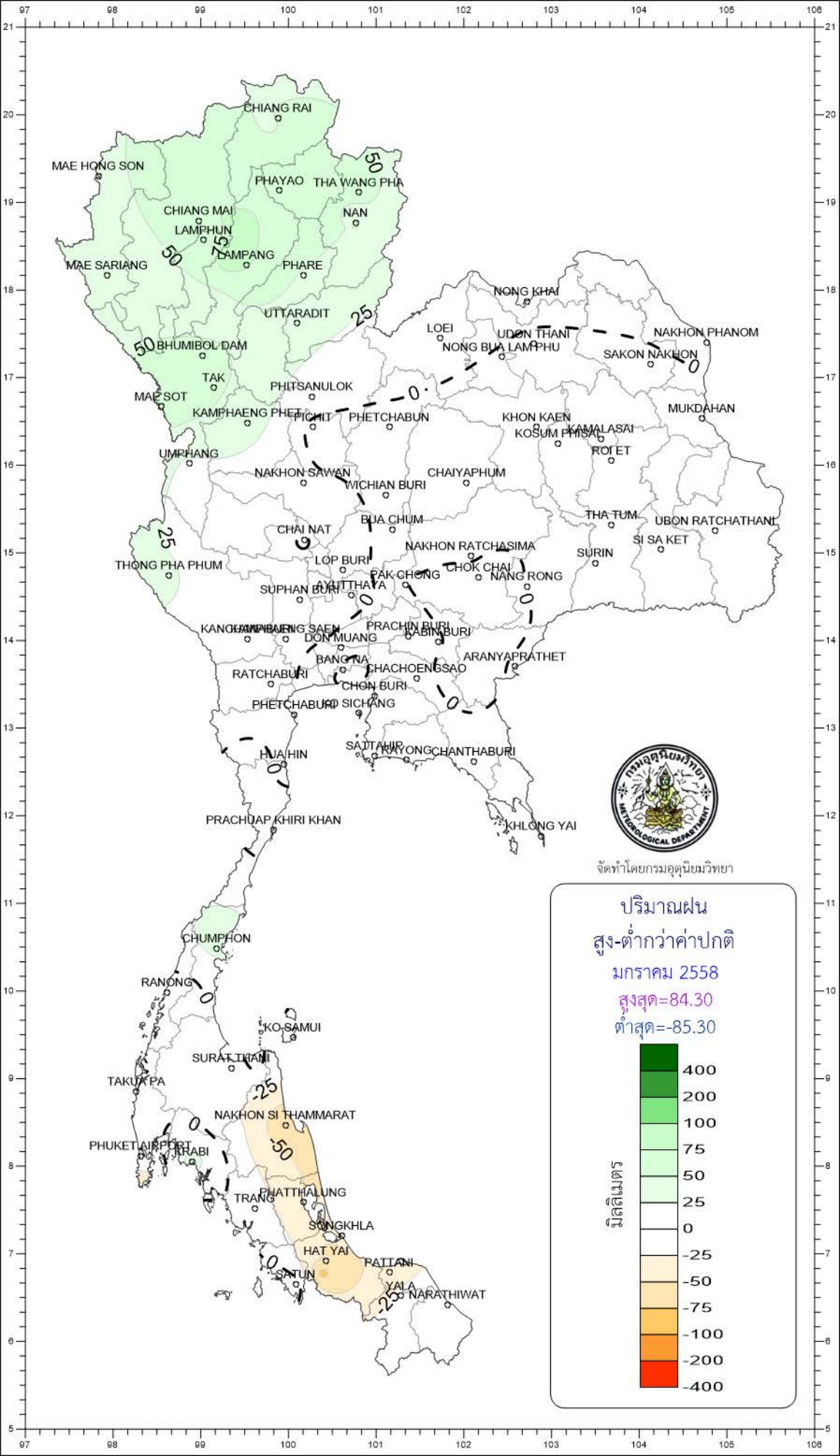
มกราคม 2558

สูงสุด=24.70

ต่ำสุด=12.80



องศาเซลเซียส



จัดทำโดยกรมอุตุนิยมวิทยา

ปริมาณฝน  
สูง-ต่ำกว่าค่าปกติ

มกราคม 2558

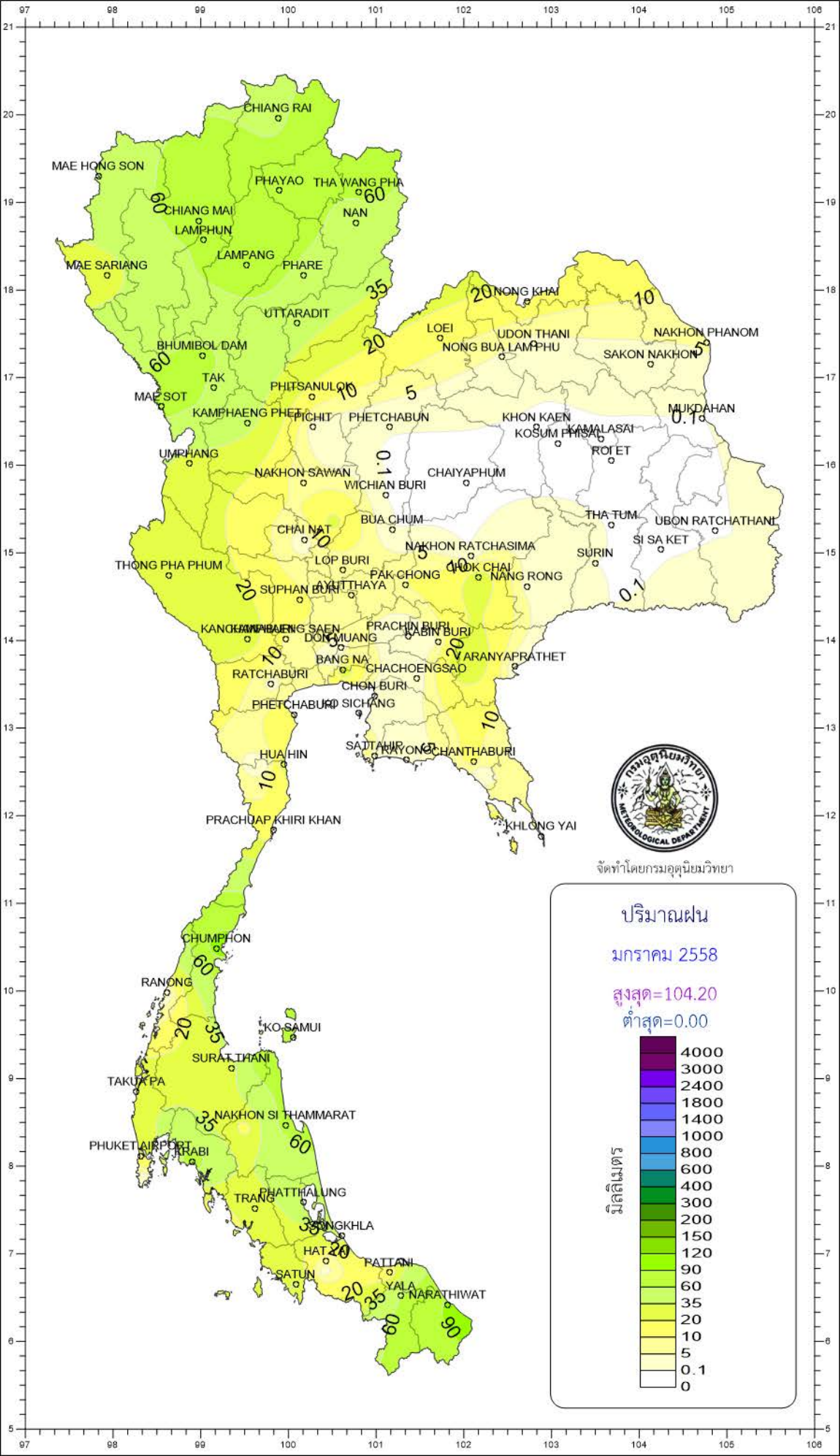
สูงสุด=84.30

ต่ำสุด=-85.30

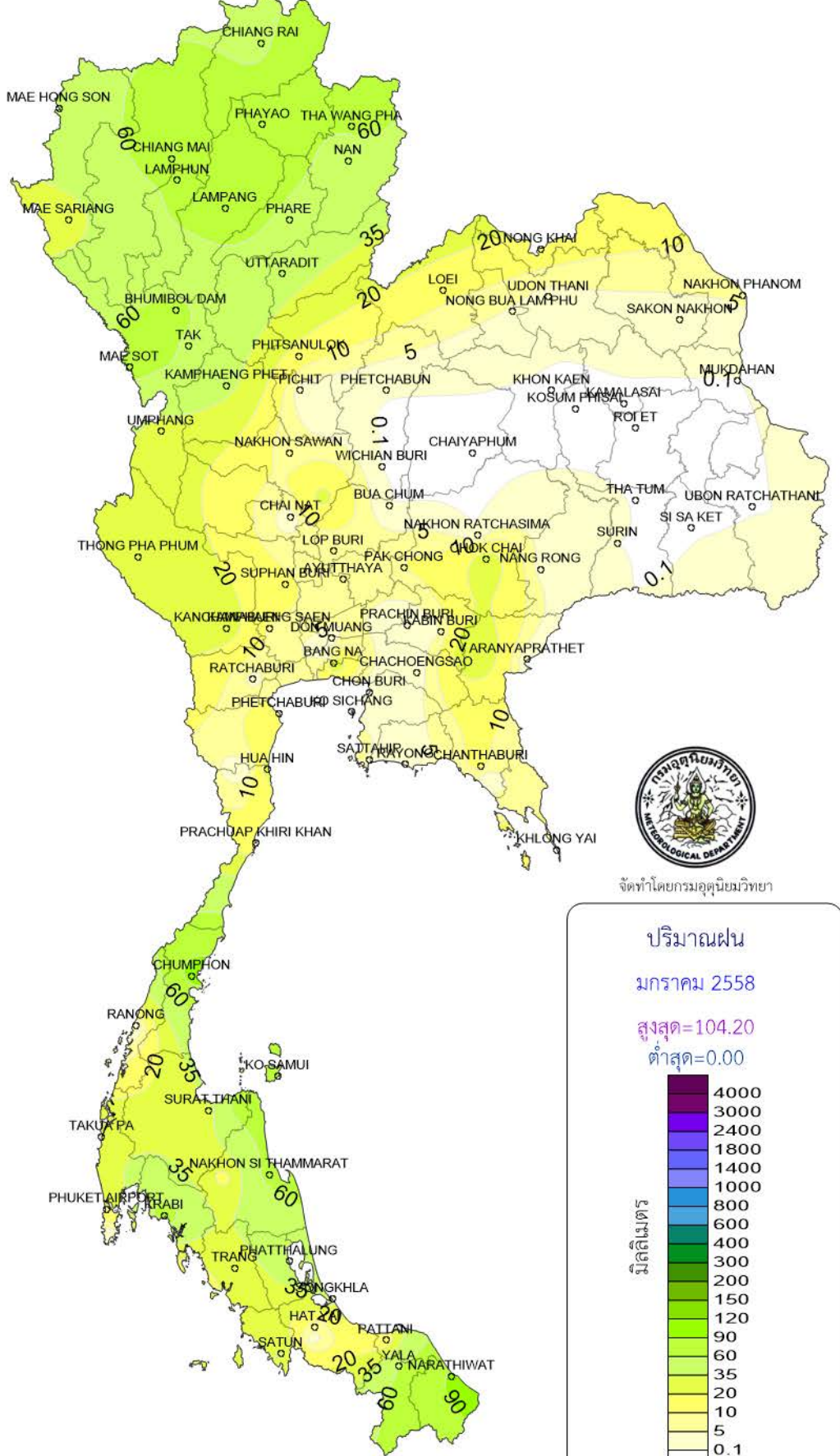
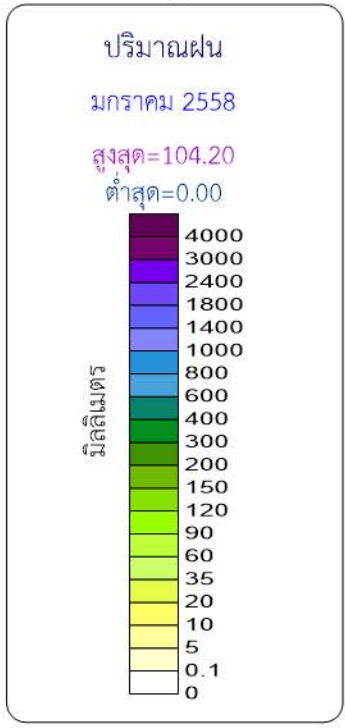
มิลลิเมตร

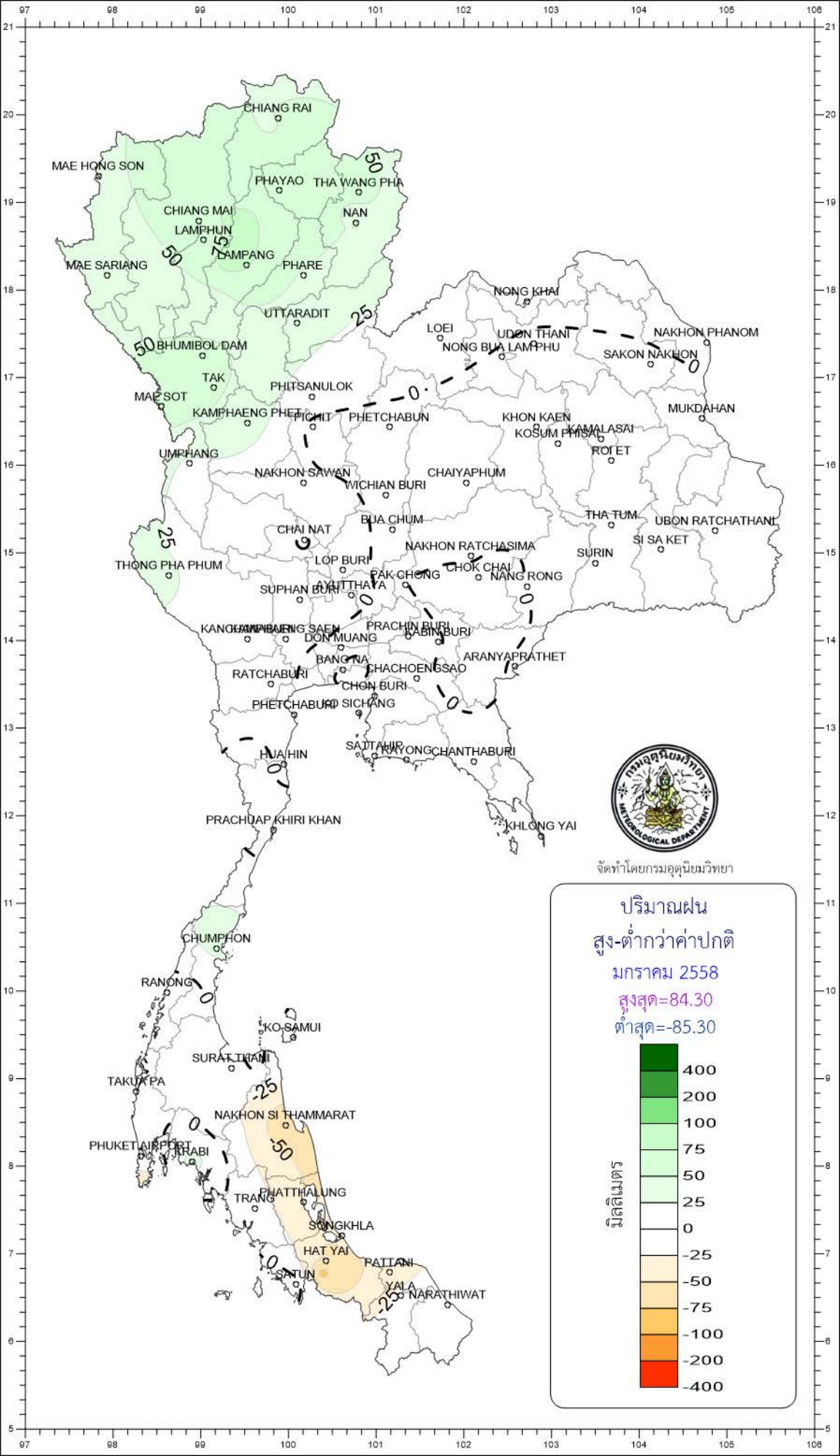
|      |
|------|
| 400  |
| 200  |
| 100  |
| 75   |
| 50   |
| 25   |
| 0    |
| -25  |
| -50  |
| -75  |
| -100 |
| -200 |
| -400 |





จัดทำโดยกรมอุตุนิยมวิทยา





จัดทำโดยกรมอุตุนิยมวิทยา

ปริมาณฝน  
สูง-ต่ำกว่าค่าปกติ  
มกราคม 2558  
สูงสุด=84.30  
ต่ำสุด=-85.30

|      |
|------|
| 400  |
| 200  |
| 100  |
| 75   |
| 50   |
| 25   |
| 0    |
| -25  |
| -50  |
| -75  |
| -100 |
| -200 |
| -400 |

มิลลิเมตร