

Monthly Weather Summary in Thailand February 2016

The weather during February 2016 was cooler than usual over upper Thailand affected by the frequent arrival of active high pressure area from China extended its ridge to cover upper Thailand and the replenishment of the northeast monsoon over the Gulf of Thailand and southern part especially during February 7-12 that active high pressure area from China extended its ridge to cover Thailand, temperature was sharply decreased nationwide with very cold weather in northern and northeastern parts. The minimum temperature during the mention period reached the new lowest record of February in several areas. However daytime temperature was relatively increased during middle month and hot weather occurred in several areas. For rainfall, upper Thailand received isolated rainfall for few days while southern Thailand obtained abundant rainfall mainly during early and late month. Monthly rainfall was below normal in northern part 5.9 mm (57%), northeastern part 18.2 mm (98%), central part 12.3 mm (100%) and eastern part 18.8 mm (65%) while it was above normal in southern part (east coast) 5.5 mm (16%) and southern part (west coast) 4.5 mm (16%).

1-10 February: Under the influence of moderate high pressure and rather active northeast monsoon during early and middle period, the weather in upper Thailand was generally cool with cold weather in several areas and very cold weather in some areas. After that, another active high pressure area bringing cooler weather to Thailand and temperature sharply decreased over the territory especially in northern and northeastern parts which cold weathers nearly the whole areas and very cold weather in some areas. The temperature at Umphang in Tak province in the morning of February 9 fell to a minimum of 2.3 °C, the lowest of the month. In the mountainous areas and mountain tops, temperature climbed down to 1.0 °C at Phluang Wildlife Sanctuary in Loei province on February 8. Frost was reported at Royal Agricultural Station Angkhang and Doi Intanon in Chiang Mai province on February 9. For rainfall, upper Thailand experienced unseasonable rainfall during early period while southern part obtained isolated to widely scattered rain excepted for scattered to fairly widespread with heavy rainfall in some areas during middle period. The heaviest daily rainfall was 60.0 mm at khuan khanun in Phatthalung province on February 6. Strong wind wave occurred at Prachuap Khiri Khan, Chumphon, Surat Thani, Nakhon si Thammarat and Narathiwat provinces on February 7.

11-20 February : The weather remained cool and cold in the morning mainly in northern and northeastern parts while very cold weather located in some areas of northern part and mountain top areas during the first half of the period. The minimum

temperature of the period was 6.4°C at Umphang in Tak province on February 11 and dropped to 3.6°C in the area of mountain top at Royal Agricultural Station Angkhang in Chiang Mai province on February 11. However daytime temperatures increased with hot weather in several areas nearly the whole period. The highest maximum temperature was 39.2 °C at Thong Pha Phum in Kanchanaburi province on February 15. Moreover the northeast monsoon which prevailed over the Gulf of Thailand and southern part strengthened during middle period, bringing isolated rain and heavy rainfall to eastern part, Bangkok and vicinity areas during middle period with highest daily rainfall of 50.1 mm at Phatthaya in Chon Buri province on February 16 while southern part obtained isolated rain and heavy rainfall in some areas almost the whole period with 38.7 mm of highest daily rainfall at Sukhirin in Narathiwat province on February 18.

21–31 February : Affected by the active high pressure area from China extended its ridge to cover upper Thailand since the middle period and the northeast monsoon which prevailed over the Gulf of Thailand and southern part was strengthened during middle period and late period, **the weather in** northern and northeastern parts stayed mainly cool with cold in some areas during early period after that temperature decreased to generally cool with cold weather in several areas. For the rest parts, cool weather in several areas mainly during the second half of the period. The lowest temperature of 11.8 °C was measured at Nakhon Phanom Agromet. Stn.in Nakhon Phanom province and Sakon Nakhon Agromet Stn. in Sakon Nakhon province on February 27 and dropped to 5.0 °C at Phuluang Wild Life Sanctuary in Loei province on February 26. For rainfall, isolated to widely scattered rain occurred in northern and southern parts during middle and late period with heavy rainfall in some areas while isolated rain in central and eastern parts during middle period. The maximum daily rainfall in upper Thailand was 46.4 mm at Doi Ang Kang in Chiang Mai province on February 25. Thundershower occurred at Lampang and Lamphun provinces on February 24 and hail was reported at Phayao province on the same day. The highest daily rainfall in southern part was 79.0 mm at Tha Sala in Nakhon Si Thammarat province on February 25 and thundershower occurred at Satun province on February 25.

Note : Rainfall, temperatures and natural disasters in this report were updated up to March 24, 2016.

Climatological Center
Meteorological Development Bureau
Meteorological Department

Breaking record of daily minimum temperature over Thailand in February 2016

Station	New Record 2016		Previous Record		Start Year
	Temp (°C)	Date	Temp (°C)	Date / Year	
Doi Ang Kang	6.7	7	7.5	3/2007	2006
Thung Chang	6.4	9	8.6	16/1998	1997
Lampang Agromet. Stn.	8.8	9	10.8	3,4/2007	2004
Sukhothai	11.1	9	12.8	2/2007	2000
Bhumibol Dam	9.6	9	11.0	12,13/1974	1960
Tak	9.2	9	10.5	14/1974	1954
Mae Sot	8.5	9	9.2	21/1957	1951
Umphang	2.3	9	3.9	13/1992	1977
Doi Mu Soe Agromet. Stn.	5.9	9	6.0	3/2007	1992
Phitsanulok	10.0	9	13.0	1/1993	1951
Lom Sak	9.8	9	10.6	13/1974	1970
Wichian Buri	10.1	9	10.9	13/1974	1970
Kamphaeng Phet	10.5	9	12.2	1/1993	1981
Pichit Agromet. Stn	10.7	9	11.7	1/1993	1992
Nong Khai	9.1	8	9.6	13/1993	1968
Udon Thani	7.8	8	9.4	28/2506	1954
Nakhon Phanom Agromet.	4.2	8	6.5	3/2007	1983
Khon Kaen	10.3	8	10.4	11/1974	1951
Khon Kaen Agromet. Stn.	8.0	8	9.7	12/1974	1969
Kalasin	8.2	8	10.2	2/2000	1998
Roi Et Agromet. Stn	10.4	8	11.1	4/2007	1983
Ubon Ratchathani	11.5	8	11.7	11/1977	1951
Surin	8.0	8	11.0	5/1967	1951
Surin Agromet. Stn.	9.5	9	10.2	13/1974	1969
Burirum	8.5	10	10.5	4/2007	2003
Nakhon Sawan	10.4	9	12.0	1/1993	1951
Chai Nat Agromet. Stn	12.2	9	14.0	13/1974	1970
Bua Chum	9.8	9	11.6	4/2007	1970
Don Muang Airport	14.9	8	16.0	11/1974	1951
Sa Kaew	13.0	8	13.7	5/2007	1998
Phiu Agromet. Stn	14.0	10	14.5	18/1981	1969

Monthly Current Report						
Rainfall and Accumulative Rainfall						
February 2016						
Northern Thailand						
Station	Temperature (°c)		Rainfall (mm)		Accumulative rainfall (mm) Since 1 January	
	Mean	Above or below normal	Actual	Above or below normal	Actual	Above or below normal
Chiang Rai	21.6	0.0	7.4	-6.4	37.4	16.1
Mae Hong Son	23.0	0.4	10.5	4.5	28.2	15.8
Phayao	22.6	-0.2	0.9	-8.3	49.8	34.9
Chiang Mai	24.2	0.3	45.3	36.4	79.5	66.4
Tha Wang Pha	21.6	-0.9	0.1	-8.9	46.2	30.2
Nan	22.8	-0.8	0.1	-11.8	68.6	52.3
Lamphun	23.9	-0.4	0.0	-4.9	44.8	37.1
Lampang	23.7	-1.0	17.5	8.7	116.5	104.9
Mae Sariang	22.0	-0.2	7.4	0.9	34.8	26.8
Phrae	23.9	-0.7	0.0	-8.8	33.3	18.7
Uttaradit	25.6	-0.5	0.0	-14.5	27.3	7.3
Bhumibol Dam	25.6	-1.1	0.0	-6.9	41.7	32.2
Tak	25.8	-1.5	0.0	-8.7	38.9	28.1
Mae Sot	24.2	-0.3	0.0	-8.2	53.6	43.7
Umphang	21.6	0.0	0.6	-8.5	30.4	14.5
Phitsanulok	25.8	-1.2	0.0	-13.5	43.1	25.7
Lom Sak	25.2	-0.7	0.0	-17.1	47.5	25.6
Phetchabun	25.4	-1.1	0.0	-16.1	42.2	20.5
Wichian Buri	26.2	-1.3	0.0	-12.6	0.1	-20.2
Kamphaeng Phet	26.2	-0.6	0.0	-13.1	22.9	7.5
Over the area	24.0	-0.6	4.5	-5.9	44.3	29.3
				-57%		195%
Northeastern Thailand						
Station	Temperature (°c)		Rainfall (mm)		Accumulative rainfall (mm) Since 1 January	
	Mean	Above or below normal	Actual	Above or below normal	Actual	Above or below normal
Nong Khai	22.9	-2.0	0.0	-17.3	81.8	56.2
Loei	22.6	-1.6	0.0	-16.1	34.5	12.2
Udon Thani	23.1	-2.2	0.0	-22.0	30.1	1.8
Nakhon Phanom	22.0	-2.4	0.0	-31.0	29.7	-4.3
Sakon Nakhon	21.8	-2.6	0.0	-29.3	14.6	-19.4
Mukdahan	22.4	-2.5	0.0	-17.4	13.8	-7.3
Khon Kaen	24.0	-1.9	0.0	-21.4	27.9	2.5
Kosum Phisai	23.9	-1.9	0.0	-15.0	40.8	22.3
Roi Et	23.8	-1.9	0.0	-19.2	22.9	0.1
Chaiyaphum	24.9	-1.8	0.0	-14.3	105.7	86.9
Ubon Ratchathani	24.7	-1.8	0.0	-15.4	25.5	8.1
Tha Tum	24.2	-2.0	4.2	-11.9	31.4	10.2
Surin	24.7	-1.9	0.0	-11.5	16.0	-1.1
Nakhon Ratchasima	25.3	-1.6	0.0	-16.1	38.0	13.7
Chok Chai	25.3	-1.2	0.0	-14.8	33.7	14.9
Nang Rong	24.6	-1.8	0.0	-19.6	15.2	-9.1
Over the area	23.8	-1.9	0.3	-18.2	35.1	11.8
				-98%		51%
NOTES : 1) Mean temperature is the average of daily dry-bulb temperature						
2) "T" is trace, rainfall amount less than 0.1 mm.						
3) "blank" is incomplete data.						
4) Temperature and rainfall are preliminary data.						

Monthly Current Report
Rainfall and Accumulative Rainfall
February 2016

Central Thailand

Station	Temperature (°c)		Rainfall (mm)		Accumulative rainfall (mm) Since 1 January	
	Mean	Above or below normal	Actual	Above or below normal	Actual	Above or below normal
Nakhon Sawan	27.4	-0.7	0.0	-11.9	6.8	-9.4
Bua Chum	26.2	-1.2	0.0	-9.1	6.0	-9.8
Lop Buri	27.7	-0.4	0.0	-6.9	54.8	42.2
Suphan Buri	27.3	-0.1	0.0	-6.9	48.7	38.1
Thong Pha Phum	26.5	-0.3	0.0	-16.4	3.8	-18.0
Kanchanaburi	27.5	-0.5	0.0	-18.2	55.8	34.3
Bangkok Airport	27.7	-0.6	0.0	-9.0	53.0	32.6
Bangkok Metropolis	28.1	-0.2	0.0	-20.0	72.6	39.3
Over the area	27.3	-0.5	0.0	-12.3	37.7	18.7
				-100%		98%

Eastern Thailand

Station	Temperature (°c)		Rainfall (mm)		Accumulative rainfall (mm) Since 1 January	
	Mean	Above or below normal	Actual	Above or below normal	Actual	Above or below normal
Prachin Buri	28.0	-0.2	0.0	-15.8	24.6	1.1
Kabin Buri	27.1	-0.7	0.0	-24.9	19.0	-14.9
Aranyaprathet	27.8	-0.4	0.0	-27.6	4.9	-28.1
Chon Buri	28.0	0.0	0.0	-14.3	102.9	78.7
Ko Sichang	27.4	-0.2	4.1	-11.6	55.1	28.5
Pattaya	27.1	-0.2	54.2	39.9	93.9	64.0
Sattahip	26.5	-1.0	13.5	-5.9	82.6	37.6
Rayong	27.1	-0.8	5.3	-31.2	113.7	56.5
Chanthaburi	27.7	0.4	3.5	-32.9	41.4	-13.7
Khlong Yai	27.6	0.4	22.6	-63.4	169.4	46.2
Over the area	27.4	-0.3	10.3	-18.8	70.8	25.6
				-65%		57%

- NOTES :
- 1) Mean temperature is the average of daily dry-bulb temperature
 - 2) "T" is trace, rainfall amount less than 0.1 mm.
 - 3) "blank" is incomplete data.
 - 4) Temperature and rainfall are preliminary data.

Monthly Current Report
Rainfall and Accumulative Rainfall
February 2016

Southern Thailand, east coast

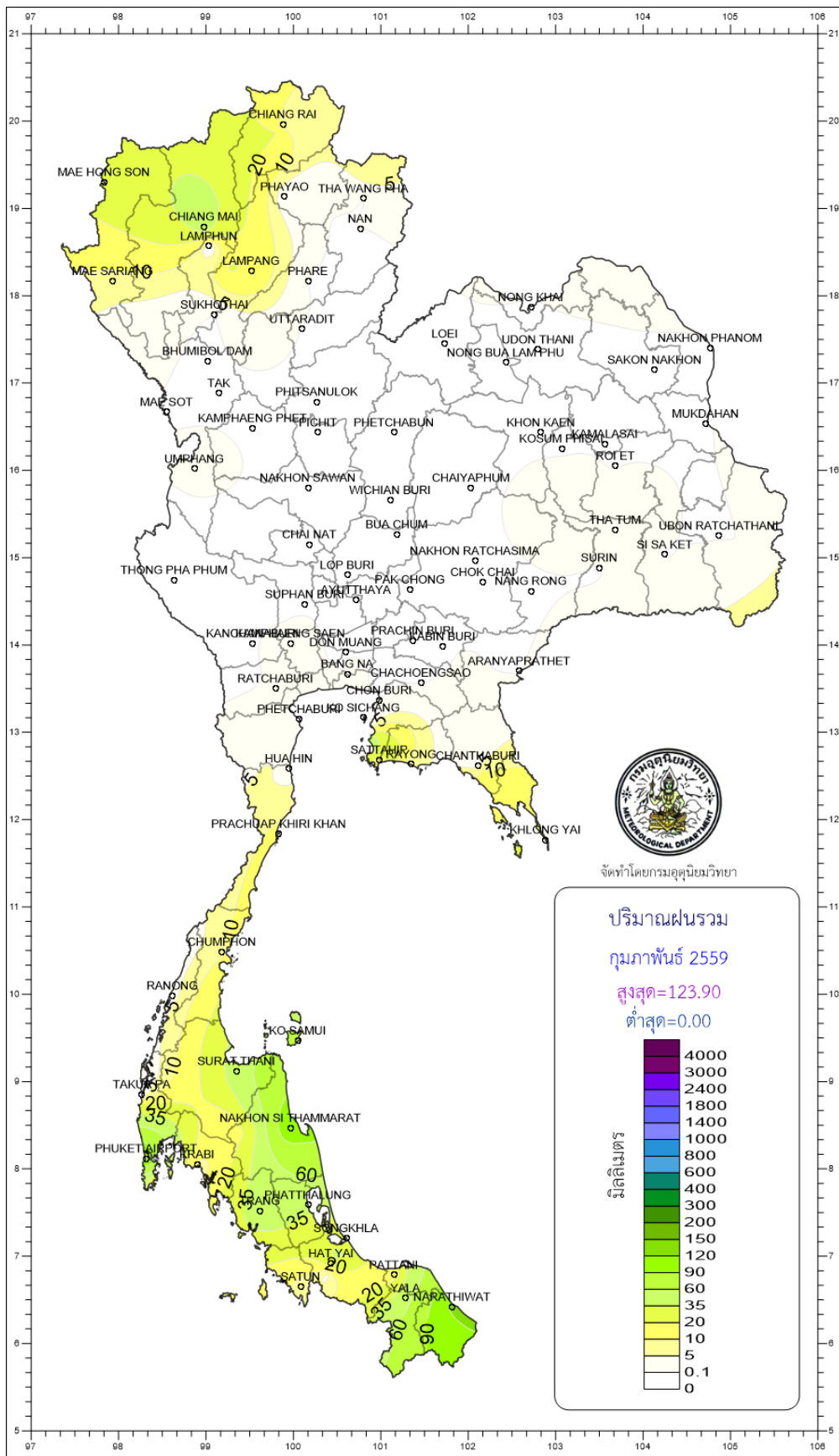
Station	Temperature (°c)		Rainfall (mm)		Accumulative rainfall (mm) Since 1 January	
	Mean	Above or below normal	Actual	Above or below normal	Actual	Above or below normal
Phetchaburi	27.3	0.1	2.1	-1.8	4.5	-10.8
Hua Hin	27.2	0.0	0.3	-15.0	41.8	14.7
Prachuap Khiri Khan	26.6	0.0	11.7	-10.1	51.7	5.5
Chumphon	26.8	0.1	8.5	-36.2	116.5	12.4
Surat Thani	26.7	0.3	44.4	32.1	89.1	40.0
Ko Samui	27.9	0.5	67.5	13.1	164.9	24.3
Nakhon Si Thammarat	26.7	0.2	118.3	50.1	233.0	19.4
Songkhla	28.2	0.7	24.5	-24.1	217.0	93.6
Hat Yai Airport	27.3	0.6	24.6	0.2	153.6	75.4
Pattani Airport	27.4	0.9	13.8	-18.2	76.8	-6.1
Narathiwat	27.5	0.9	123.9	70.2	348.0	192.7
Over the area	27.2	0.4	40.0	5.5	136.1	41.9
				16%		44%

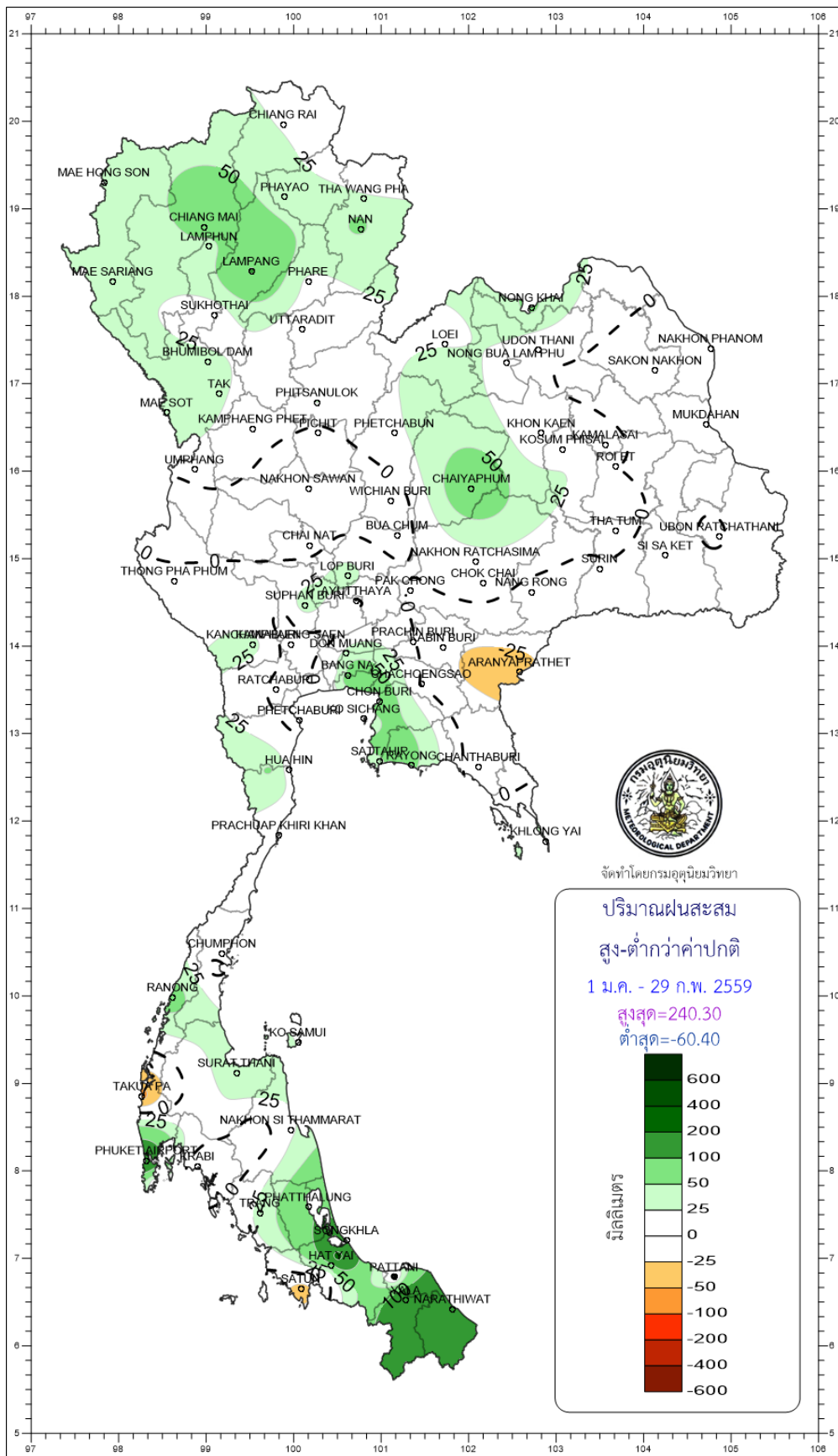
Southern Thailand, west coast

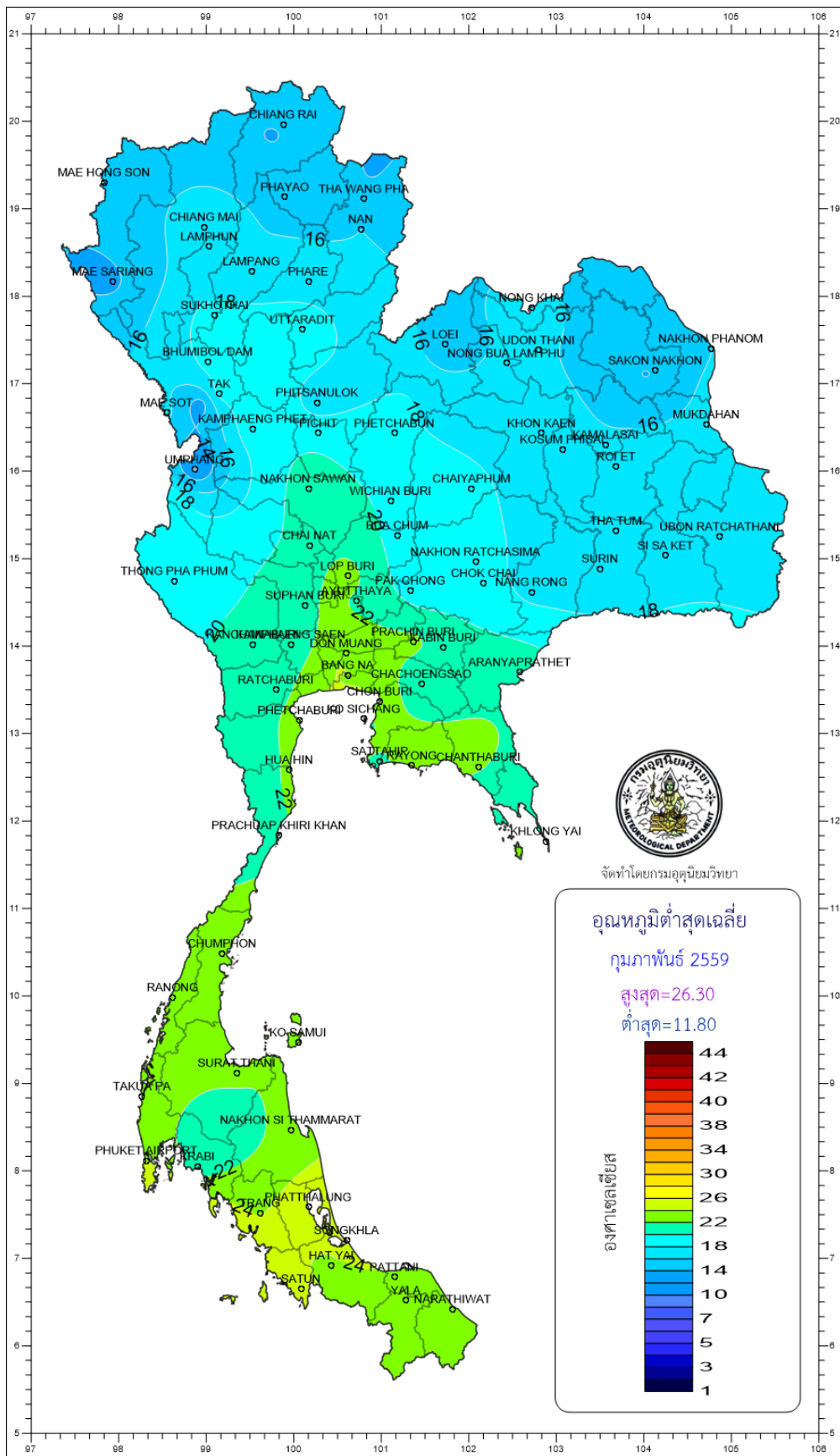
Station	Temperature (°c)		Rainfall (mm)		Accumulative rainfall (mm) Since 1 January	
	Mean	Above or below normal	Actual	Above or below normal	Actual	Above or below normal
Ranong	27.9	0.4	3.6	-12.4	94.3	68.3
Takua Pa	28.0	1.0	2.4	-38.7	20.1	-60.4
Phuket	29.5	0.8	24.2	0.3	65.8	11.6
Phuket Airport	28.4	0.7	122.1	94.9	249.2	185.8
Ko Lanta	29.0	0.8	17.4	-0.6	35.2	2.3
Trang Airport	28.1	0.6	46.9	26.1	85.8	32.5
Satun	29.1	1.0	7.4	-38.4	32.5	-34.5
Over the area	28.6	0.8	32.0	4.5	83.3	29.4
				16%		55%

NOTES : 1) Mean temperature is the average of daily dry-bulb temperature
2) "T" is trace, rainfall amount less than 0.1 mm.
3) "blank" is incomplete data.
4) Temperature and rainfall are preliminary data.

Monthly Current Report							
February 2016							
Region	Station	Temperature (°C)		Rainfall (mm)		Accumulative rainfall (mm) Since 1 January	
		Mean	Above or below normal	Actual	Above or below normal	Actual	Above or below normal
North	Chiang Rai	21.6	0.0	7.4	-6.4	37.4	16.1
	Mae Hong Son	23.0	0.4	10.5	4.5	28.2	15.8
	Phayao	22.6	-0.2	0.9	-8.3	49.8	34.9
	Chiang Mai	24.2	0.3	45.3	36.4	79.5	66.4
	Tha Wang Pha	21.6	-0.9	0.1	-8.9	46.2	30.2
	Nan	22.8	-0.8	0.1	-11.8	68.6	52.3
	Lamphun	23.9	-0.4	0.0	-4.9	44.8	37.1
	Lampang	23.7	-1.0	17.5	8.7	116.5	104.9
	Mae Sariang	22.0	-0.2	7.4	0.9	34.8	26.8
	Phrae	23.9	-0.7	0.0	-8.8	33.3	18.7
	Uttaradit	25.6	-0.5	0.0	-14.5	27.3	7.3
	Bhumibol Dam	25.6	-1.1	0.0	-6.9	41.7	32.2
	Tak	25.8	-1.5	0.0	-8.7	38.9	28.1
	Mae Sot	24.2	-0.3	0.0	-8.2	53.6	43.7
	Umphang	21.6	0.0	0.6	-8.5	30.4	14.5
	Phitsanulok	25.8	-1.2	0.0	-13.5	43.1	25.7
	Lom Sak	25.2	-0.7	0.0	-17.1	47.5	25.6
Phetchabun	25.4	-1.1	0.0	-16.1	42.2	20.5	
Wichian Buri	26.2	-1.3	0.0	-12.6	0.1	-20.2	
Kamphaeng Phet	26.2	-0.6	0.0	-13.1	22.9	7.5	
Northeast	Nong Khai	22.9	-2.0	0.0	-17.3	81.8	56.2
	Loei	22.6	-1.6	0.0	-16.1	34.5	12.2
	Udon Thani	23.1	-2.2	0.0	-22.0	30.1	1.8
	Nakhon Phanom	22.0	-2.4	0.0	-31.0	29.7	-4.3
	Sakon Nakhon	21.8	-2.6	0.0	-29.3	14.6	-19.4
	Mukdahan	22.4	-2.5	0.0	-17.4	13.8	-7.3
	Khon Kaen	24.0	-1.9	0.0	-21.4	27.9	2.5
	Kosum Phisai	23.9	-1.9	0.0	-15.0	40.8	22.3
	Roi Et	23.8	-1.9	0.0	-19.2	22.9	0.1
	Chaiyaphum	24.9	-1.8	0.0	-14.3	105.7	86.9
	Ubon Ratchathani	24.7	-1.8	0.0	-15.4	25.5	8.1
	Tha Tum	24.2	-2.0	4.2	-11.9	31.4	10.2
	Surin	24.7	-1.9	0.0	-11.5	16.0	-1.1
Nakhon Ratchasima	25.3	-1.6	0.0	-16.1	38.0	13.7	
Chok Chai	25.3	-1.2	0.0	-14.8	33.7	14.9	
Nang Rong	24.6	-1.8	0.0	-19.6	15.2	-9.1	
Central	Nakhon Sawan	27.4	-0.7	0.0	-11.9	6.8	-9.4
	Bua Chum	26.2	-1.2	0.0	-9.1	6.0	-9.8
	Lop Buri	27.7	-0.4	0.0	-6.9	54.8	42.2
	Suphan Buri	27.3	-0.1	0.0	-6.9	48.7	38.1
	Thong Pha Phum	26.5	-0.3	0.0	-16.4	3.8	-18.0
	Kanchanaburi	27.5	-0.5	0.0	-18.2	55.8	34.3
	Bangkok Airport	27.7	-0.6	0.0	-9.0	53.0	32.6
Bangkok Metropolis	28.1	-0.2	0.0	-20.0	72.6	39.3	
East	Prachin Buri	28.0	-0.2	0.0	-15.8	24.6	1.1
	Kabin Buri	27.1	-0.7	0.0	-24.9	19.0	-14.9
	Aranyaprathet	27.8	-0.4	0.0	-27.6	4.9	-28.1
	Chon Buri	28.0	0.0	0.0	-14.3	102.9	78.7
	Ko Sichang	27.4	-0.2	4.1	-11.6	55.1	28.5
	Pattaya	27.1	-0.2	54.2	39.9	93.9	64.0
	Sattahip	26.5	-1.0	13.5	-5.9	82.6	37.6
	Rayong	27.1	-0.8	5.3	-31.2	113.7	56.5
	Chanthaburi	27.7	0.4	3.5	-32.9	41.4	-13.7
Khlong Yai	27.6	0.4	22.6	-63.4	169.4	46.2	
South (East Coast)	Phetchaburi	27.3	0.1	2.1	-1.8	4.5	-10.8
	Hua Hin	27.2	0.0	0.3	-15.0	41.8	14.7
	Prachuap Khiri Khan	26.6	0.0	11.7	-10.1	51.7	5.5
	Chumphon	26.8	0.1	8.5	-36.2	116.5	12.4
	Surat Thani	26.7	0.3	44.4	32.1	89.1	40.0
	Ko Samui	27.9	0.5	67.5	13.1	164.9	24.3
	Nakhon Si Thammarat	26.7	0.2	118.3	50.1	233.0	19.4
	Songkhla	28.2	0.7	24.5	-24.1	217.0	93.6
	Hat Yai Airport	27.3	0.6	24.6	0.2	153.6	75.4
	Pattani Airport	27.4	0.9	13.8	-18.2	76.8	-6.1
Narathiwat	27.5	0.9	123.9	70.2	348.0	192.7	
South (West Coast)	Ranong	27.9	0.4	3.6	-12.4	94.3	68.3
	Takua Pa	28.0	1.0	2.4	-38.7	20.1	-60.4
	Phuket	29.5	0.8	24.2	0.3	65.8	11.6
	Phuket Airport	28.4	0.7	122.1	94.9	249.2	185.8
	Ko Lanta	29.0	0.8	17.4	-0.6	35.2	2.3
	Trang Airport	28.1	0.6	46.9	26.1	85.8	32.5
Satun	29.1	1.0	7.4	-38.4	32.5	-34.5	
	Over the area	25.7	-0.6	12.0	-8.4	63.0	25.6
					-41%		68%
NOTES : 1) Mean temperature is the average of daily dry-bulb temperature							
2) "T" is trace, rainfall amount less than 0.1 mm.							
3) "blank" is incomplete data.							
4) Temperature and rainfall are preliminary data.							







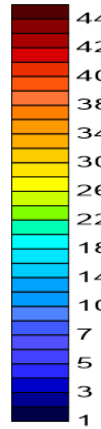
จัดทำโดยกรมอุตุนิยมวิทยา

อุณหภูมิต่ำสุดเฉลี่ย

กุมภาพันธ์ 2559

สูงสุด=26.30

ต่ำสุด=11.80



องศาเซลเซียส

