

Monthly Weather Summary in Thailand December 2014

Under the influence of a rather active high pressure areas accompanied with northeast monsoon, dry condition with cool and cold weather occurred in upper Thailand almost the whole month. Especially during the middle and late of the month, Thailand was generally cold with very cold weather in some areas mainly in the north and northeastern parts. Mountainous areas and mountaintop experienced cold and very cold weather throughout the month with frosts in some areas. However, the mean temperatures for December were higher than normal over the whole parts.

By the way, unseasonal rainfall occasionally occurred in some areas of upper Thailand during early and late December while the weather in southern Thailand was cool in some areas of upper portion and wet condition almost the month with flash floods in some areas. Monthly rainfall was below normal in northern part 7.5 mm (91%) and northeastern part 1.9 mm (54%) while it was inversely higher than normal in central part 2.8 mm (54%), eastern part 6.8 mm (84%), southern part (east coast) 127.0 mm (54%) and southern part (west coast) 88.9 mm (119%).

1-10 December: The rather active high pressure area from China extended its ridge to cover upper Thailand and the South China Sea during the first half of the period then downgraded. These caused cool weather mainly in northern and northeastern parts throughout the period with cold weather nearly the whole areas of upper northern part during early period. The minimum temperature of the period was 12.2 °C, at Amphoe Mueang in Mae Hong Son province on December 1 and at Chiang Rai Agromet Stn. in Chiang Rai province on December 2. In the Mountainous areas and mountain tops, temperature climbed down to 3.0 °C at Royal Agricultural Station Angkhang in Chiang Mai province on December 1. Besides, upper Thailand received isolated heavy mainly during the first half of the period, with the heaviest daily rainfall of 39.7 mm at Pattaya in Chon Buri province on December 4. Moreover the moderate northeast monsoon brought scattered to fairly widespread rain to southern Thailand almost the whole period with isolated heavy to very heavy rainfall in some areas. The heaviest daily rainfall was 109.8 mm at Amphoe Betong in Yala province on December 2.

11-20 December: Due to the continuation of the rather active high pressure area covering upper Thailand and active northeast monsoon, cool and cold weather areas persisted in upper Thailand especially in northern and northeastern parts. The minimum temperature of the period was 10.6 °C at Agrometeorological Station in Nakhon Phanom province on December 20 and dropped to 4.5 °C in the area of mountain top at at Doi Intanon, Chiang Mai province on December 19. Dry condition was reported in upper Thailand except for isolated light rain with 0.3 mm at Amphoe Tha Wang Pha in Nan province on December 16. Southern part obtained

widespread rain mainly in east coast from Surat Thani province southward nearly the whole period with heavy to very heavy rainfall in several areas with the heaviest daily rainfall of 407.0 mm at Amphoe Su-ngai Padi in Narathiwat province on December 17. Flash floods were reported at Surat Thani, Nahkon Si Thammarat and Phattalung provinces on December 14, with floods at Yala and Songkhla provinces on December 17 and at Narathiwat province on December 18. Moreover, landslide was occurred at Yala province on December 18.

21-31 December: The period was generally cold weather in the northern and northeastern parts with very cold weather in some areas caused by the rather active high pressure area covering upper Thailand during the beginning and late period. The lowest minimum temperature of 7.7 °C was measured at Agrometeorological Station in Chiang Rai province on December 23 and was 2.2 °C in the area of mountaintop at Royal Agricultural Station Angkhang, Chiang Mai province on December 24. Frost occurred at Royal Agricultural Station Angkhang and Doi Intanon in Chiang Mai province on December 25 and 26, respectively. While it was generally cool with cold weather in some areas of upper central and eastern parts mainly during early and late periods, there was unseasonal rainfall in some areas of upper Thailand during middle period with 27.1 mm heaviest daily rainfall at Center for Education Materia, Khet Khlong Toei in Bangkok on December 27. Southern part experienced cool weather in upper portion and fairly widespread rain with heavy to very heavy rainfall in some areas from Chumphon province southward with the heaviest daily rainfall of 135.0 mm at Amphoe Phra Phrom in Nahkon Si Thammarat province on December 26. Floods were reported at Narathiwat, Yala, Pattani, Phattalung and Songkhla provinces.

Note : *Rainfall, temperatures and natural disasters in this report were updated up to January 8, 2015.*

Climatological Center
Meteorological Development Bureau
Meteorological Department

Monthly Current Report
Rainfall and Accumulative Rainfall
December 2014

Northern Thailand

Station	Temperature (°c)		Rainfall (mm)		Accumulative rainfall (mm) Since 1 January	
	Mean	Above or below normal	Actual	Above or below normal	Actual	Above or below normal
Chiang Rai	20.9	1.5	0.0	-14.0	1626.7	-63.8
Mae Hong Son	21.5	0.6	0.0	-10.4	1026.0	-266.4
Phayao	21.5	1.5	0.0	-10.9	1169.8	32.8
Chiang Mai	23.5	2.1	0.0	-15.9	1074.9	-55.7
Tha Wang Pha	22.1	1.6	0.3	-10.7	1173.9	-234.2
Nan	22.8	1.8	0.0	-8.6	1090.0	-144.1
Lamphun	22.9	1.6	0.0	-7.4	788.0	-215.8
Lampang	23.1	1.5	0.0	-7.0	1145.8	100.3
Mae Sariang	22.2	1.3	0.0	-7.6	966.9	-168.9
Phrae	23.3	1.5	0.0	-7.8	1062.4	-52.4
Uttaradit	25.3	1.6	0.5	-4.5	1337.2	-34.4
Bhumibol Dam	23.7	1.0	0.0	-7.2	878.1	-165.3
Tak	24.4	1.4	7.0	1.9	926.7	-134.4
Mae Sot	24.1	2.1	0.8	-5.1	1027.5	-440.1
Umphang	21.6	1.8	2.9	-2.2	1242.2	-219.1
Phitsanulok	25.4	1.1	0.0	-11.1	1329.4	12.4
Lom Sak	24.9	1.1	0.0	-4.5	745.0	-298.1
Phetchabun	25.0	1.5	0.0	-7.8	1215.6	82.2
Wichian Buri	25.3	0.5	0.0	-4.3	1231.0	10.4
Kamphaeng Phet	25.0	0.9	1.9	-4.8	1280.8	-23.8
Over the area	23.4	1.4	0.7	-7.5 -91%	1116.9	-114.0 -9%

Station	Temperature (°c)		Rainfall (mm)		Accumulative rainfall (mm) Since 1 January	
	Mean	Above or below normal	Actual	Above or below normal	Actual	Above or below normal
Nong Khai	23.2	1.1	0.0	-4.3	1584.3	-23.9
Loei	22.1	1.0	0.0	-8.7	1078.1	-162.8
Udon Thani	22.9	0.5	0.0	-2.9	1374.2	-44.2
Nakhon Phanom	22.5	0.5	0.1	-4.7	2410.2	63.4
Sakon Nakhon	22.0	0.1	0.2	-5.4	1701.1	56.1
Mukdahan	22.5	0.3	2.6	0.0	1441.7	-38.3
Khon Kaen	23.5	0.5	0.1	-4.0	973.0	-273.8
Kosum Phisai	23.8	0.3	0.0	-3.1	1491.9	228.2
Roi Et	23.6	0.7	1.7	-0.4	1441.1	99.1
Chaiyaphum	24.6	0.8	0.3	-3.8	804.5	-332.7
Ubon Ratchathani	24.0	0.3	3.6	2.6	1900.4	318.7
Tha Tum	23.9	0.2	1.5	0.5	1100.8	-287.1
Surin	24.1	0.5	2.1	0.2	1388.5	-43.7
Nakhon Ratchasima	24.6	1.0	0.4	-2.3	1048.7	-22.8
Chok Chai	24.1	0.5	3.5	0.3	956.7	-118.1
Nang Rong	23.7	0.1	9.7	6.3	1330.5	136.6
Over the area	23.4	0.5	1.6	-1.9 -54%	1376.6	-27.9 -2%

- NOTES :
- 1) Mean temperature is the average of daily dry-bulb temperature
 - 2) "T" is trace, rainfall amount less than 0.1 mm.
 - 3) "blank" is incomplete data.
 - 4) Temperature and rainfall are preliminary data.

Monthly Current Report
Rainfall and Accumulative Rainfall
December 2014

Central Thailand

Station	Temperature (°c)		Rainfall (mm)		Accumulative rainfall (mm) Since 1 January	
	Mean	Above or below normal	Actual	Above or below normal	Actual	Above or below normal
Nakhon Sawan	25.6	1.0	0.9	-3.7	1072.8	-76.9
Bua Chum	25.1	0.8	0.5	-2.0	856.4	-228.9
Lop Buri	26.7	0.9	0.4	-4.1	914.2	-210.9
Suphan Buri	25.9	0.9	3.2	-3.5	953.7	-21.7
Thong Pha Phum	24.9	1.0	1.8	-2.9	1411.4	-375.1
Kanchanaburi	26.3	1.4	12.3	6.1	824.4	-232.0
Bangkok Airport	26.8	0.4	13.8	7.7	1268.8	-106.1
Bangkok Metropolis	27.5	1.0	31.0	24.7	1130.1	-518.1
Over the area	26.1	0.9	8.0	2.8 54%	1054.0	-221.2 -17%

Eastern Thailand

Station	Temperature (°c)		Rainfall (mm)		Accumulative rainfall (mm) Since 1 January	
	Mean	Above or below normal	Actual	Above or below normal	Actual	Above or below normal
Prachin Buri	27.2	1.0	2.0	-3.0	1495.7	-327.6
Kabin Buri	25.5	-0.1	7.2	3.3	1346.8	-250.0
Aranyaprathet	26.2	0.9	11.3	6.5	1461.5	116.7
Chon Buri	27.7	1.2	2.6	-2.9	1116.4	-179.2
Ko Sichang	27.1	0.9	14.8	6.3	910.2	-308.7
Pattaya	26.8	0.9	47.3	39.0	924.5	-186.2
Sattahip	26.3	0.3	14.7	4.2	1220.9	-45.7
Rayong	26.6	0.6	6.2	0.3	1049.8	-333.4
Chanthaburi	26.9	0.9	12.3	5.5	2824.4	-169.8
Khlong Yai	27.7	0.9	31.0	9.7	5361.0	515.2
Over the area	26.8	0.7	14.9	6.8 84%	1771.1	-117.1 -6%

- NOTES :
- 1) Mean temperature is the average of daily dry-bulb temperature
 - 2) "T" is trace, rainfall amount less than 0.1 mm.
 - 3) "blank" is incomplete data.
 - 4) Temperature and rainfall are preliminary data.

Monthly Current Report
Rainfall and Accumulative Rainfall
December 2014

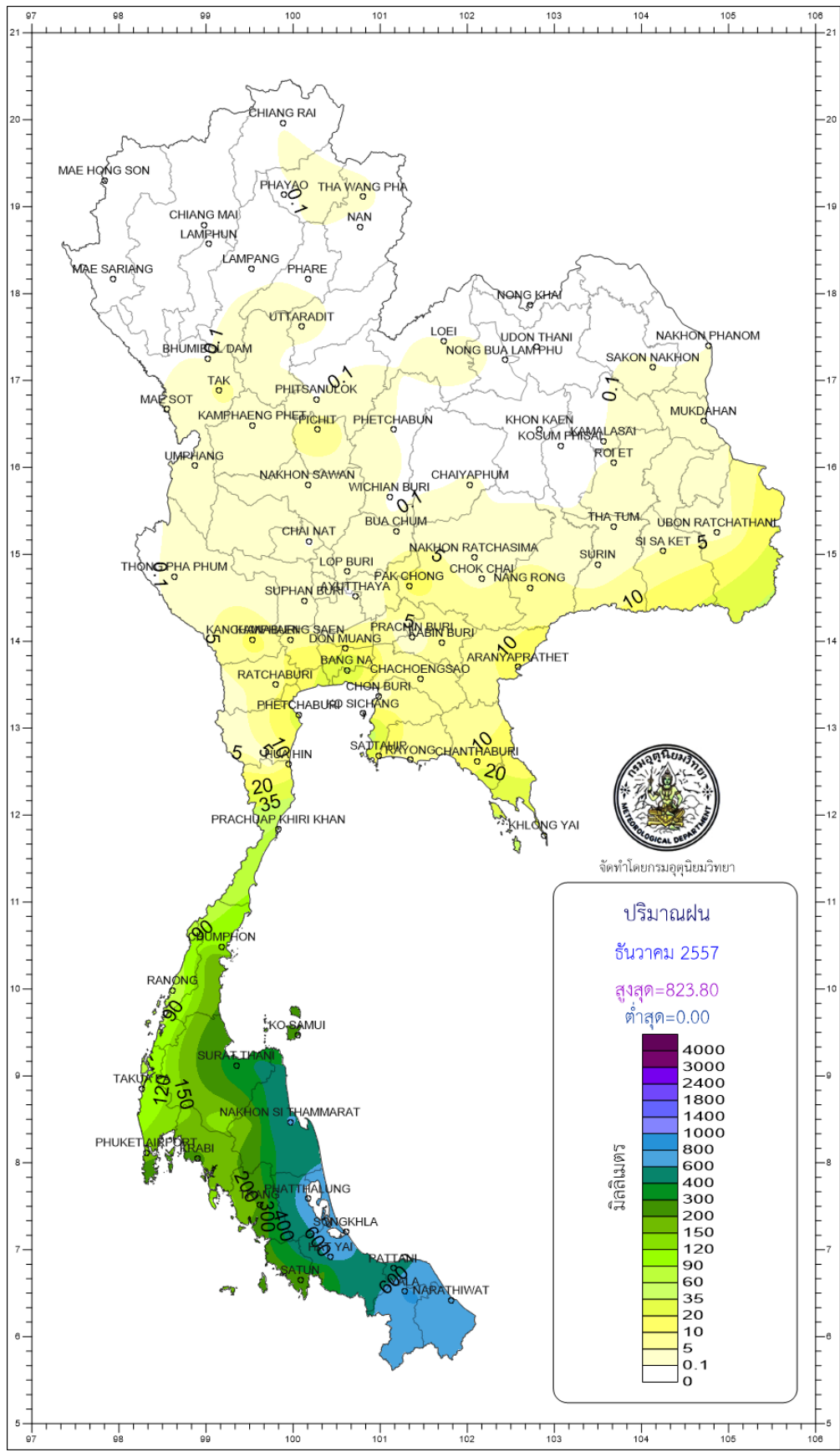
Southern Thailand, east coast

Station	Temperature (°c)		Rainfall (mm)		Accumulative rainfall (mm) Since 1 January	
	Mean	Above or below normal	Actual	Above or below normal	Actual	Above or below normal
Phetchaburi	26.5	1.1	26.1	14.5	930.5	-56.8
Hua Hin	27.0	1.2	10.4	2.5	610.3	-344.8
Prachuap Khiri Khan	26.6	1.1	63.7	48.7	1000.5	-91.3
Chumphon	26.5	1.2	118.3	-5.0	1687.9	-184.8
Surat Thani	26.0	0.5	382.7	253.3	1676.5	54.5
Ko Samui	27.4	0.8	251.7	41.4	1403.2	-556.9
Nakhon Si Thammarat	26.4	0.7	639.2	187.5	2318.4	-178.1
Songkhla	27.4	0.6	595.6	150.9	1940.8	-125.9
Hat Yai Airport	25.9	0.3	684.8	417.1	1752.9	26.6
Pattani Airport	26.5	0.6	465.1	86.8	2013.9	148.8
Narathiwat	26.6	0.7	765.3	199.7	2653.2	192.5
Over the area	26.6	0.8	363.9	127.0 54%	1635.3	-101.6 -6%

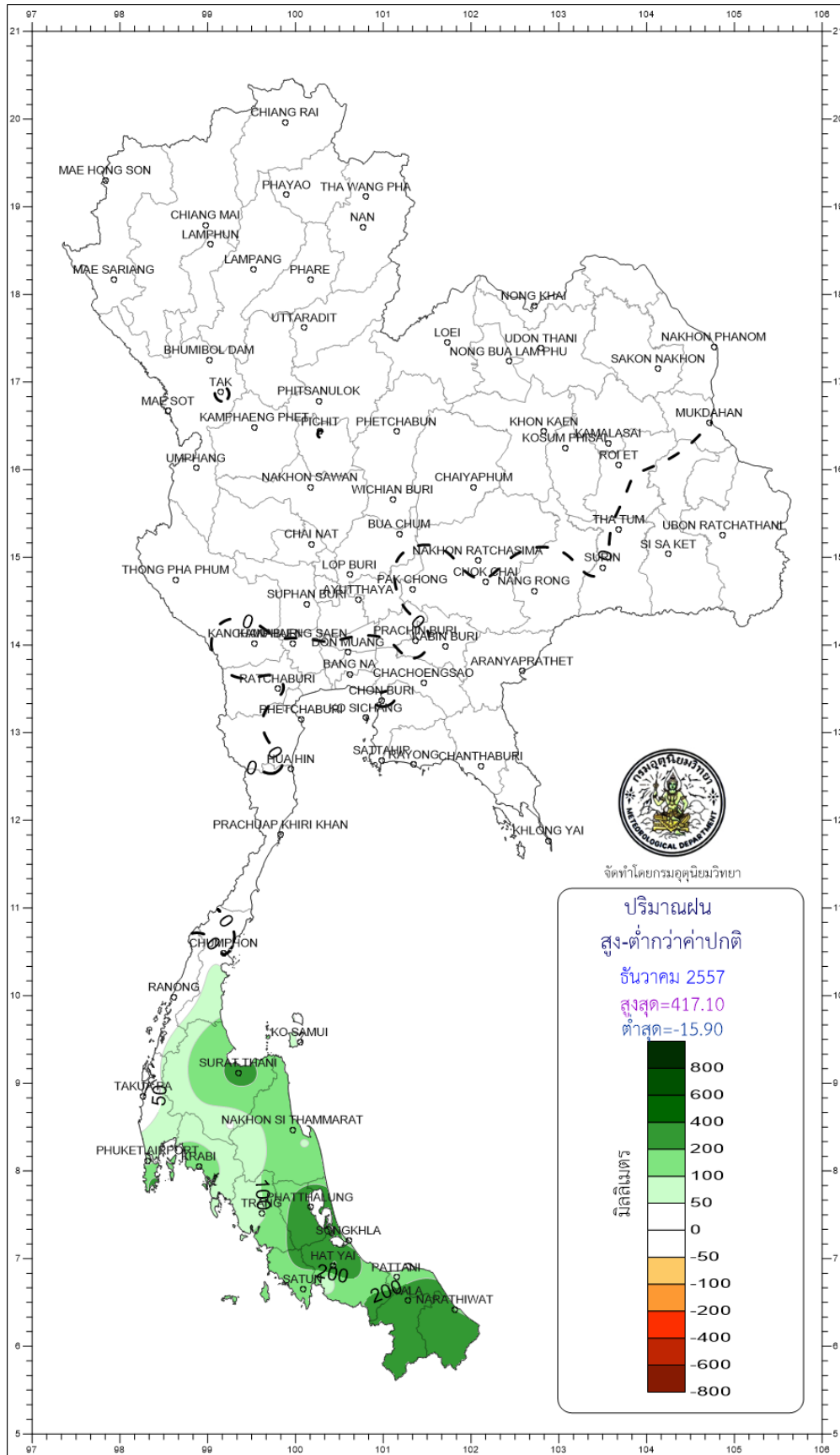
Southern Thailand, west coast

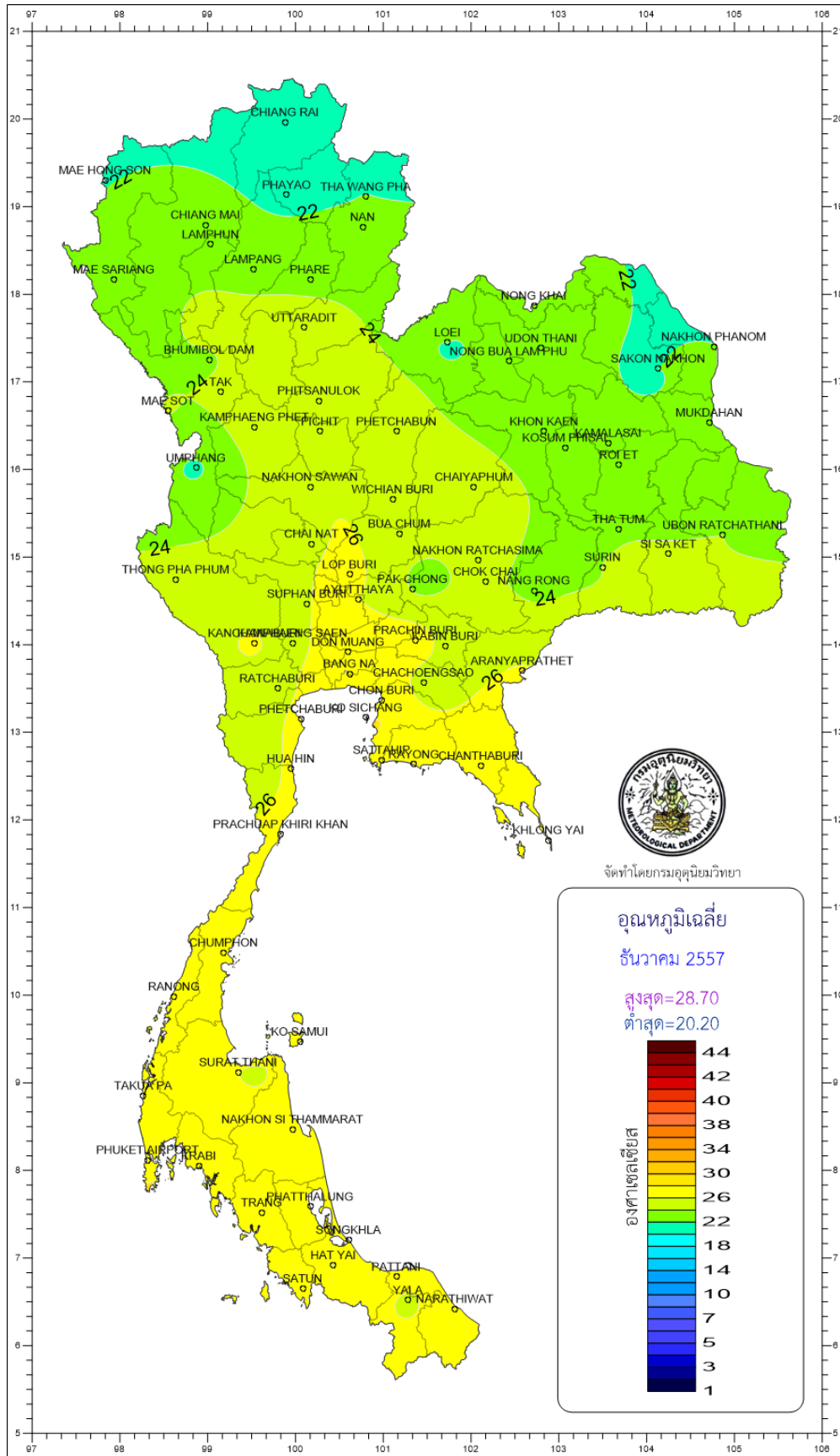
Station	Temperature (°c)		Rainfall (mm)		Accumulative rainfall (mm) Since 1 January	
	Mean	Above or below normal	Actual	Above or below normal	Actual	Above or below normal
Ranong	27.1	0.8	48.3	2.8	4801.6	733.2
Takua Pa	27.0	0.6	84.3	22.6	3588.5	-69.1
Phuket	28.0	0.4	296.4	224.0	2829.2	609.7
Phuket Airport	27.6	0.9	139.2	71.8	2524.8	49.8
Ko Lanta	27.4	0.5	107.9	52.3	2540.7	364.1
Trang Airport	26.6	0.4	208.3	82.9	2195.1	46.6
Satun	27.1	0.1	262.8	165.9	2496.6	206.7
Over the area	27.3	0.6	163.9	88.9 119%	2996.6	277.3 10%

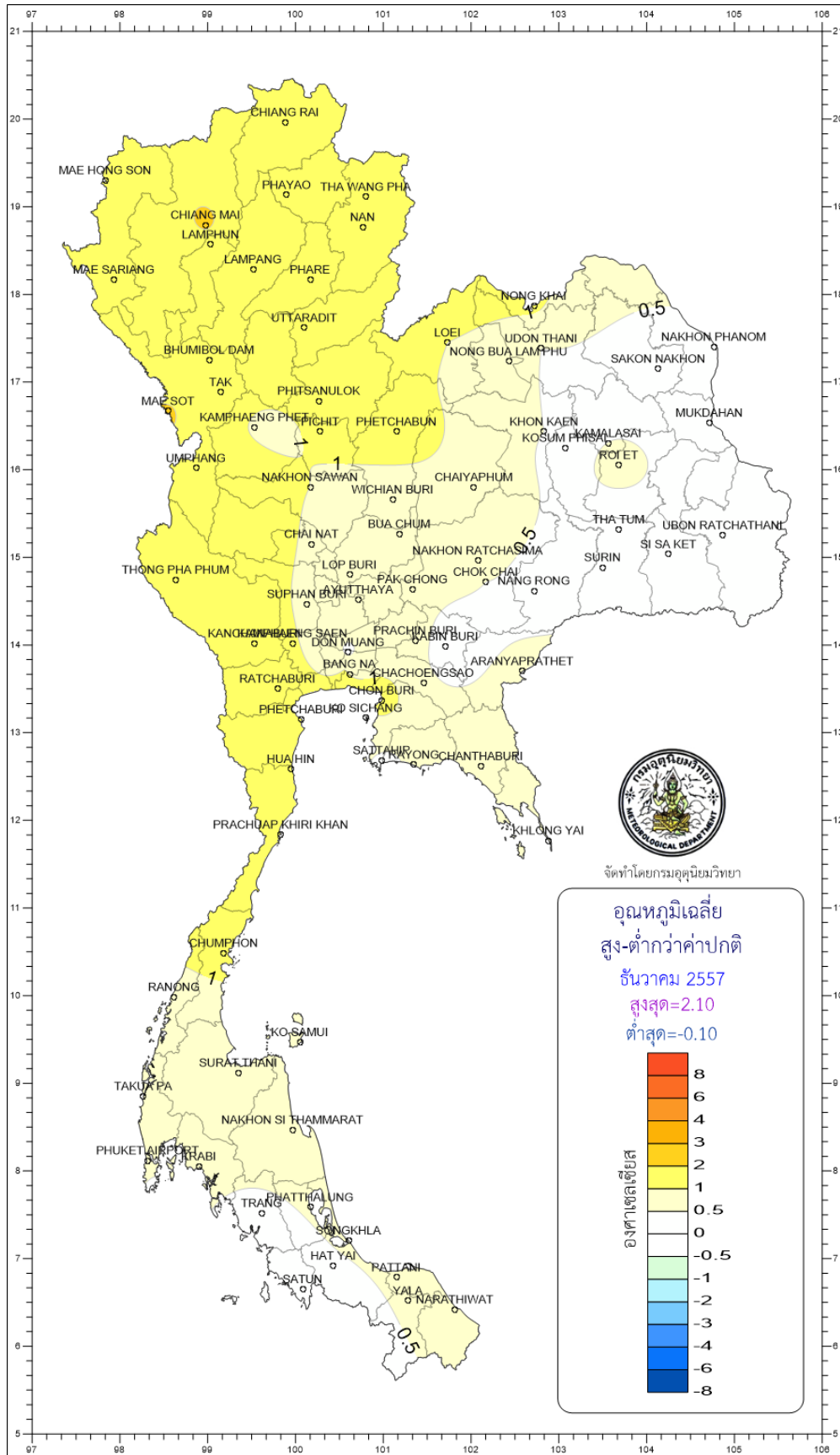
- NOTES :
- 1) Mean temperature is the average of daily dry-bulb temperature
 - 2) "T" is trace, rainfall amount less than 0.1 mm.
 - 3) "blank" is incomplete data.
 - 4) Temperature and rainfall are preliminary data.

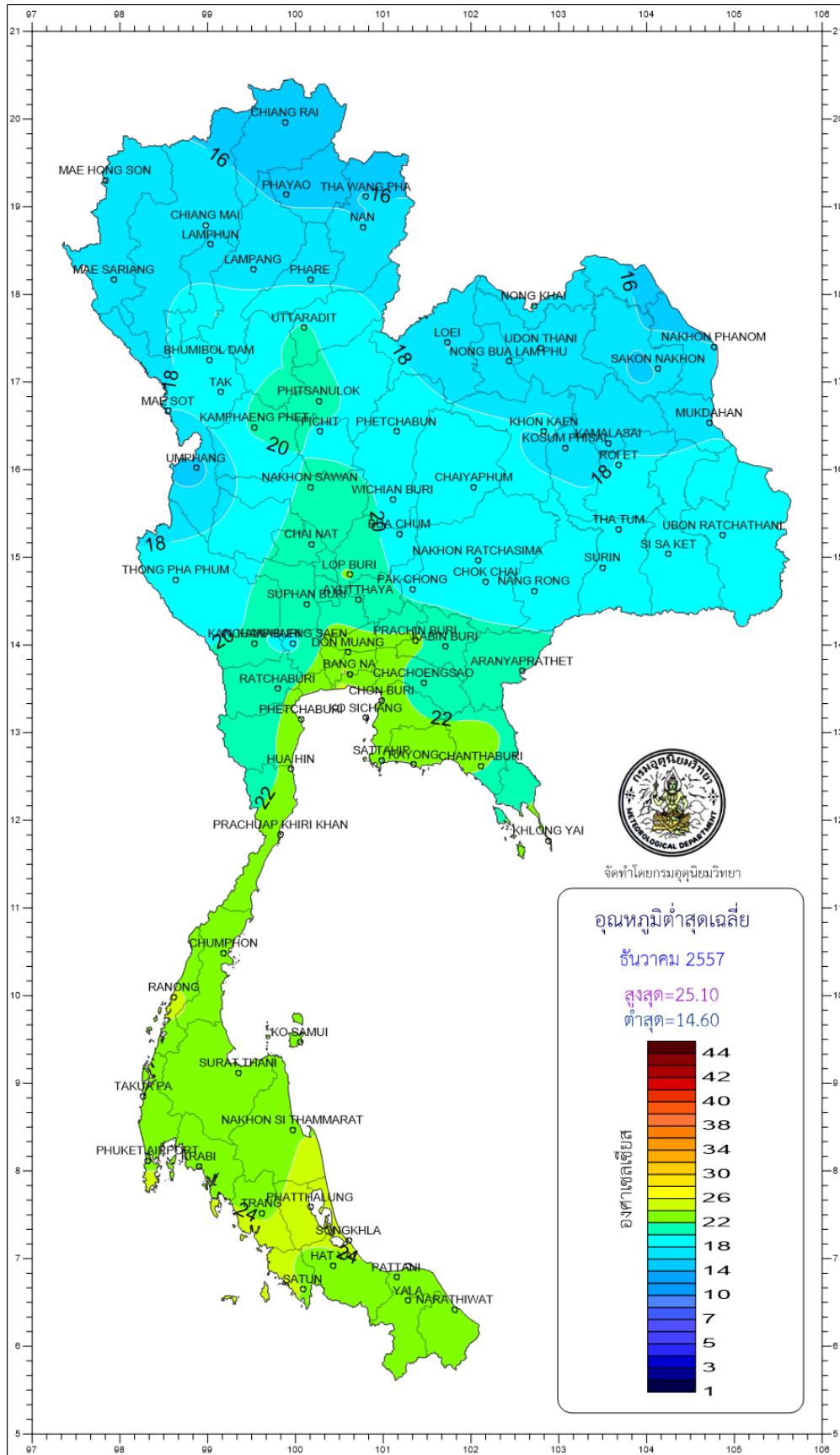


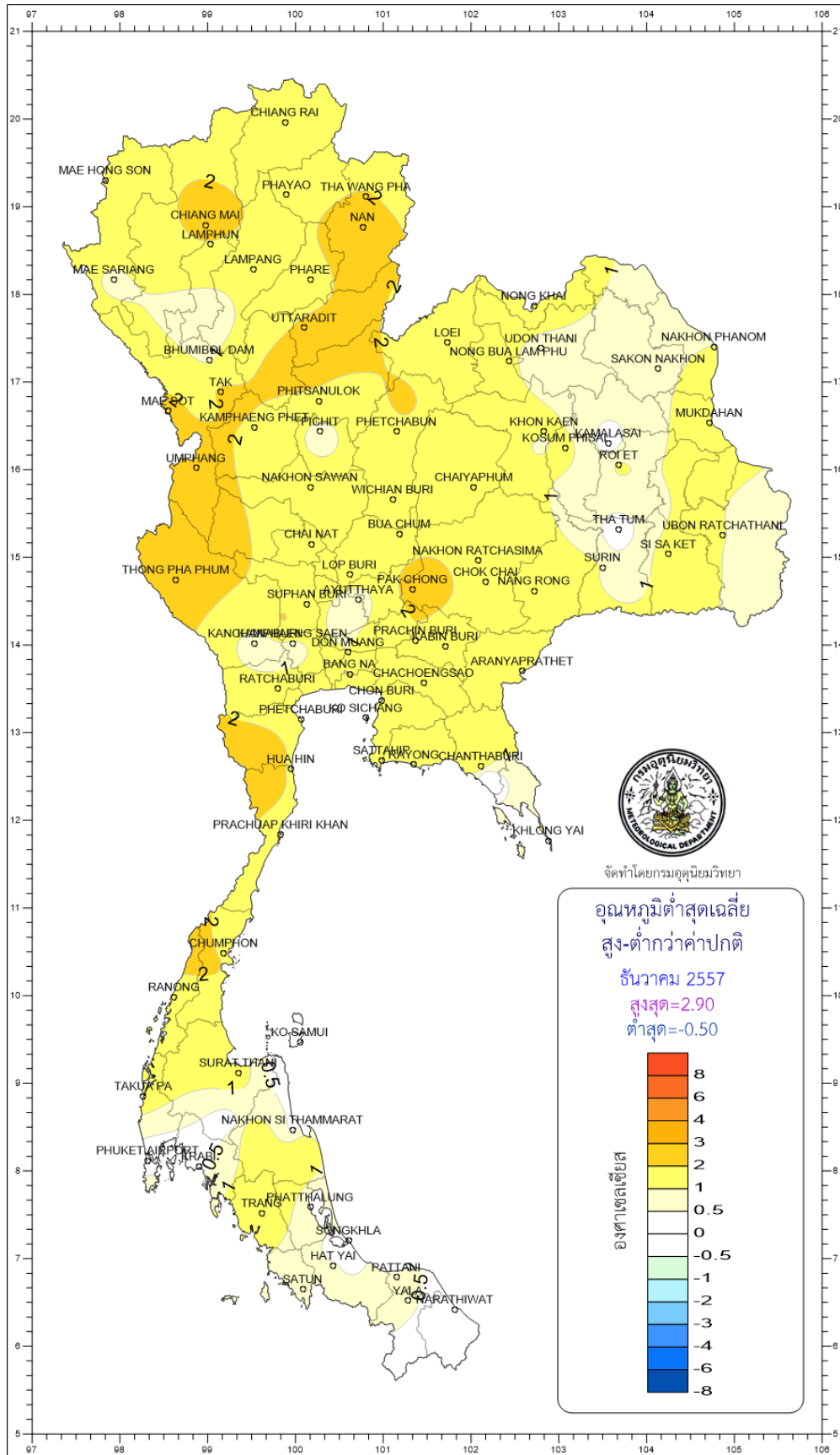
จัดทำโดยกรมอุตุนิยมวิทยา



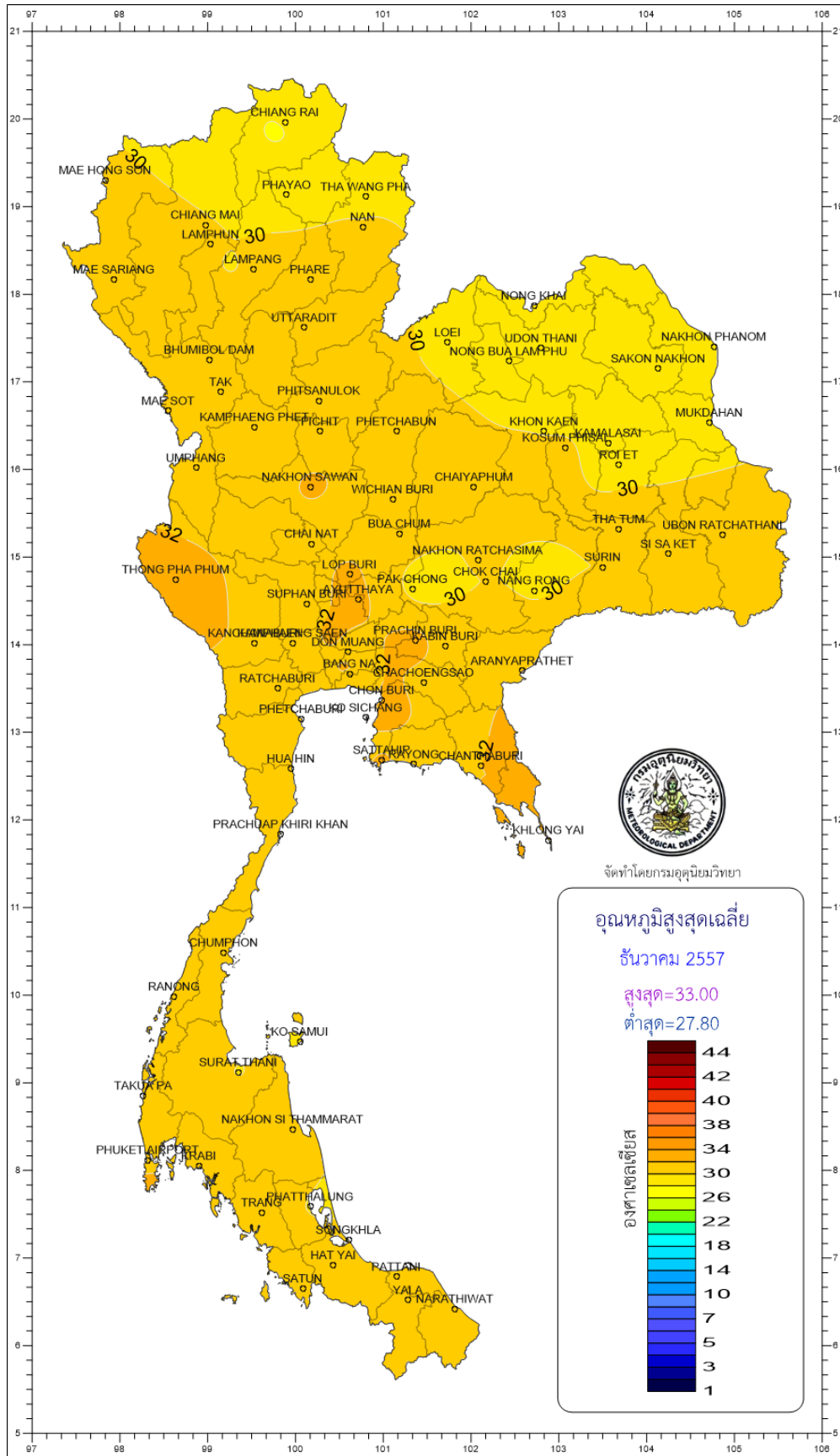








จัดทำโดยกรมอุตุนิยมวิทยา



จัดทำโดยกรมอุตุนิยมวิทยา

