

Monthly Weather Summary in Thailand December 2013

Under the influence of a high pressure areas dominating over upper Thailand, dry condition with cool and cold weather occurred in upper Thailand almost the whole month. Moreover, an intense ridge of high pressure frequently reached the upper Thailand during the second half of the month. Thailand experienced cold with very cold weather in some areas and temperature dropped sharply during the second half of the month. Mountainous areas and mountaintop experienced cold and very cold weather throughout the month with frosts in some areas. Mean monthly temperatures were lower than normal nearly the whole regions. By the way, the weather turned out to be much wetter than usual during mid-December as westerly trough from Myanmar covered the north and northeastern parts respectively. An active low pressure cell covering Malaysia during early month with the northeast monsoon prevailing over the Gulf of Thailand, southern Thailand experienced cold weather in some areas during the second half of the month and received scattered to fairly widespread rain from Chumphon province southward almost the whole month with flash floods in some places of the east coast during early month. Monthly rainfall was above normal in northern part 19.6 mm (239%), northeastern part 28.0 mm (800%) and eastern part 1.0 mm (12%) while it was inversely lower than normal in central part 4.2 mm (81%), southern part (east coast) 50.5 mm (21%) and southern part (west coast) 28.7 mm (38%).

1-10 December: Cool and cold weather occurred in upper Thailand almost the whole period with morning fog and generally cold weather in the north and northeastern parts. The minimum temperature of the period was 10.3 °C, at Agrometeorological station in Nakhon Phanom province on December 2 and drop to 4.0 °C at Phluang Wildlife Sanctuary in Loei province on December 7 and at Doi Intanon in Chiang Mai province on December 8. Upper Thailand only received isolated light rain in northern part on December 1 and 10 with 7.2 mm maximum daily rainfall at Doi Angkhang Meteorological station in Chiang Mai province on December 1. Southern Thailand from Chumphon province southward experienced scattered to fairly widespread rain with isolated heavy to very heavy rainfall during the first half of the period by the influence of the low pressure over Malaysia and Malacca strait coupled with the rather active northeast monsoon prevailed over the Gulf of Thailand and southern part. The heaviest daily rainfall was 290.5 mm at Amphoe Muang in Songkhla province on December 5. Flash floods were reported at Yala, Phattalung, Trang, Songkhla and Narathiwat on the same day.

11-20 December: Under the influence of the weak high pressure area from China during early period, temperature was increasing over upper Thailand and producing isolated rain in upper portion of northern part. After that, an intense ridge of high pressure reached upper Thailand. Meanwhile, the westerly trough moved from Myanmar to cover northern and

northeastern parts respectively. It brought fairly widespread rain with isolated heavy to very heavy rainfall in upper Thailand from 15 to 16 December. The heaviest daily rainfall of 103.0 mm was measured at Amphoe Na Chaluai in Ubon Ratchathani province on December 16. Moreover, temperature was decreased by 4 - 7 °C nationwide and cold weather occurred in much of upper Thailand. The lowest minimum temperature was 7.0 °C at Amphoe Muang in Payao province on December 18. Cold and very cold weather in the mountainous areas and mountain top, 0.2 °C was measured at Doi Inthanon, Amphoe Chom Thong in Chiang Mai province on December 17 where frost was reported on the mornings of 15 - 18 December and also occurred at Amphoe Nakhon Thai in Phitsanulok province on December 18 and December 20. The southern part obtained widely scattered to scattered rain in the east coast nearly the whole period with isolated heavy to very heavy rainfall while the west coast received isolated to widely scattered rain with heavy rainfall in some areas during early and mid-period. The heaviest daily rainfall of 140.0 mm was measured at Amphoe Khanom in Nakhon Si Thammarat province on December 11.

21-31 December: Cold weather remained in the northern and northeastern parts with very cold weather in some areas. The lowest minimum temperature of 7.3 °C was measured at Agrometeorological Station in Nakhon Phanom province on December 21 and was 2.0 °C in the area of mountaintop at Doi Angkhang, Chiang Mai province on December 22 and December 23. Frost occurred at Amphoe Phu Ruea and Phu Kradueng National Park in Loei province on December 26. There was cold weather in several areas of upper central and eastern parts while southern part experienced cool weather almost the whole areas and cold weather at Phetchaburi and Prachuap Khiri Khan provinces. Rainfall was found only in the east coast from Surat Thani southward with 74.8 mm daily rainfall was at Amphoe Muang in Narathiwat province on December 28.

Note : *Rainfall, temperatures and natural disasters in this report were updated up to January 6, 2014.*

Climatological Center
Meteorological Development Bureau
Meteorological Department

Monthly Current Report
Rainfall and Accumulative Rainfall
December 2013

Northern Thailand

Station	Temperature (°c)		Rainfall (mm)		Accumulative rainfall (mm) Since 1 January	
	Mean	Above or below normal	Actual	Above or below normal	Actual	Above or below normal
Chiang Rai	18.5	-0.9	109.3	95.3	2141.5	451.0
Mae Hong Son	20.4	-0.5	56.9	46.5	1250.6	-41.8
Phayao	18.7	-1.3	22.0	11.1	1174.1	37.1
Chiang Mai	21.0	-0.4	26.8	10.9	1288.0	157.4
Tha Wang Pha	19.7	-0.8	101.6	90.6	1460.5	52.4
Nan	20.0	-1.0	22.2	13.6	1053.2	-180.9
Lamphun	20.2	-1.1	11.4	4.0	1137.0	133.2
Lampang	20.0	-1.6	6.9	-0.1	1101.4	55.9
Mae Sariang	20.5	-0.4	42.4	34.8	1014.4	-121.4
Phrae	20.3	-1.5	41.4	33.6	1147.9	33.1
Uttaradit	22.0	-1.7	7.7	2.7	1345.6	-26.0
Bhumibol Dam	20.8	-1.9	10.6	3.4	823.6	-219.8
Tak	21.2	-1.8	8.4	3.3	1142.5	81.4
Mae Sot	21.2	-0.8	23.5	17.6	1669.1	201.5
Umphang	18.8	-1.0	3.4	-1.7	1757.1	295.8
Phitsanulok	22.2	-2.1	19.8	8.7	1470.8	153.8
Lom Sak	21.8	-2.0	17.5	13.0	964.5	-78.6
Phetchabun	22.0	-1.5	20.3	12.5	1381.4	248.0
Wichian Buri	22.2	-2.6	0.8	-3.5	1348.9	128.3
Kamphaeng Phet	22.0	-2.1	2.7	-4.0	1526.9	222.3
Over the area	20.7	-1.3	27.8	19.6 239%	1310.0	79.1 6%

Station	Temperature (°c)		Rainfall (mm)		Accumulative rainfall (mm) Since 1 January	
	Mean	Above or below normal	Actual	Above or below normal	Actual	Above or below normal
Nong Khai	20.3	-1.8	61.5	57.2	1526.8	-81.4
Loei	19.1	-2.0	26.4	17.7	1548.7	307.8
Udon Thani	19.8	-2.6	57.9	55.0	1352.4	-66.0
Nakhon Phanom	19.8	-2.2	19.5	14.7	2054.5	-292.3
Sakon Nakhon	19.2	-2.7	33.7	28.1	2044.3	399.3
Mukdahan	20.0	-2.2	21.9	19.3	1751.7	271.7
Khon Kaen	20.9	-2.1	32.1	28.0	943.0	-303.8
Kosum Phisai	20.9	-2.6	17.7	14.6	1214.0	-49.7
Roi Et	20.9	-2.0	7.4	5.3	1606.5	264.5
Chaiyaphum	21.5	-2.3	62.1	58.0	1333.3	196.1
Ubon Ratchathani	21.2	-2.5	111.0	110.0	1796.9	215.2
Tha Tum	21.1	-2.6	20.4	19.4	1294.9	-93.0
Surin	21.4	-2.2	27.3	25.4	1608.3	176.1
Nakhon Ratchasima	21.5	-2.1	0.3	-2.4	1306.0	234.5
Chok Chai	21.4	-2.2	4.8	1.6	1410.7	335.9
Nang Rong	20.8	-2.8	0.2	-3.2	1288.1	94.2
Over the area	20.6	-2.3	31.5	28.0 800%	1505.0	100.5 7%

- NOTES :
- 1) Mean temperature is the average of daily dry-bulb temperature
 - 2) "T" is trace, rainfall amount less than 0.1 mm.
 - 3) "blank" is incomplete data.
 - 4) Temperature and rainfall are preliminary data.

Monthly Current Report
Rainfall and Accumulative Rainfall
December 2013

Central Thailand

Station	Temperature (°c)		Rainfall (mm)		Accumulative rainfall (mm) Since 1 January	
	Mean	Above or below normal	Actual	Above or below normal	Actual	Above or below normal
Nakhon Sawan	22.7	-1.9	0.0	-4.6	1050.8	-98.9
Bua Chum	21.8	-2.5	2.5	0.0	1546.4	461.1
Lop Buri	23.8	-2.0	0.0	-4.5	1125.5	0.4
Suphan Buri	23.0	-2.0	0.1	-6.6	1048.9	73.5
Thong Pha Phum	21.8	-2.1	3.6	-1.1	1940.2	153.7
Kanchanaburi	23.0	-1.9	0.0	-6.2	1088.9	32.5
Bangkok Airport	24.7	-1.7	0.4	-5.7	1430.0	55.1
Bangkok Metropolis	25.2	-1.3	1.6	-4.7	1772.9	124.7
Over the area	23.3	-1.9	1.0	-4.2 -81%	1375.5	100.3 8%

Eastern Thailand

Station	Temperature (°c)		Rainfall (mm)		Accumulative rainfall (mm) Since 1 January	
	Mean	Above or below normal	Actual	Above or below normal	Actual	Above or below normal
Prachin Buri	24.7	-1.5	6.7	1.7	2128.7	305.4
Kabin Buri	23.2	-2.4	2.0	-1.9	1810.1	213.3
Aranyaprathet	23.4	-1.9	0.0	-4.8	1799.6	454.8
Chon Buri	25.1	-1.4	4.0	-1.5	1755.9	460.3
Ko Sichang	24.7	-1.5	4.0	-4.5	1604.6	385.7
Pattaya	24.6	-1.3	5.6	-2.7	1222.0	111.3
Sattahip	23.9	-2.1	35.9	25.4	-	-
Rayong	24.1	-1.9	11.4	5.5	1743.8	360.6
Chanthaburi	24.5	-1.5	2.7	-4.1	3711.2	717.0
Khlong Yai	26.2	-0.6	18.7	-2.6	5111.3	265.5
Over the area	24.4	-1.7	9.1	1.0 12%	2320.8	432.6 23%

- NOTES :
- 1) Mean temperature is the average of daily dry-bulb temperature
 - 2) "T" is trace, rainfall amount less than 0.1 mm.
 - 3) "blank" is incomplete data.
 - 4) Temperature and rainfall are preliminary data.

Monthly Current Report
Rainfall and Accumulative Rainfall
December 2013

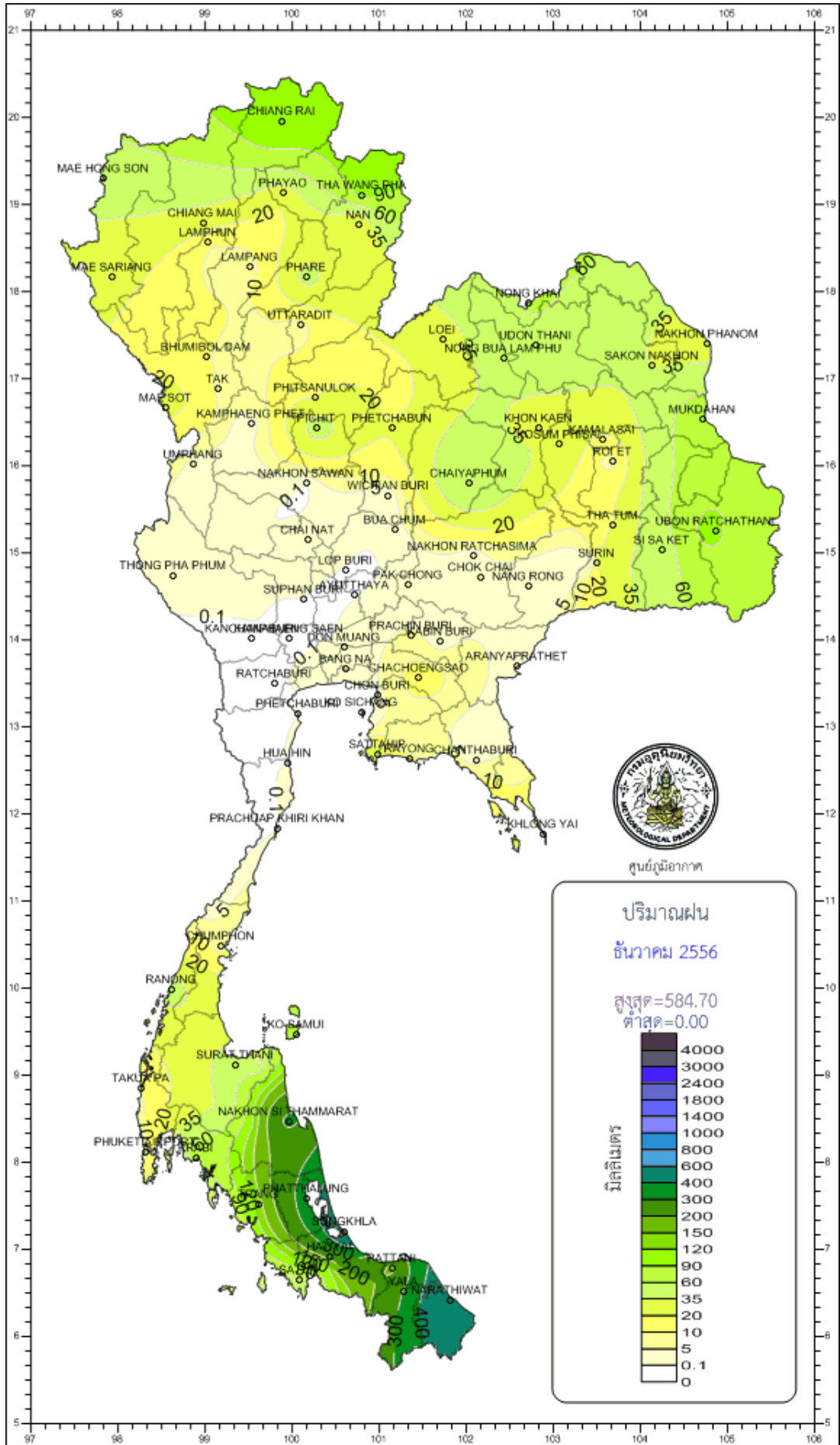
Southern Thailand, east coast

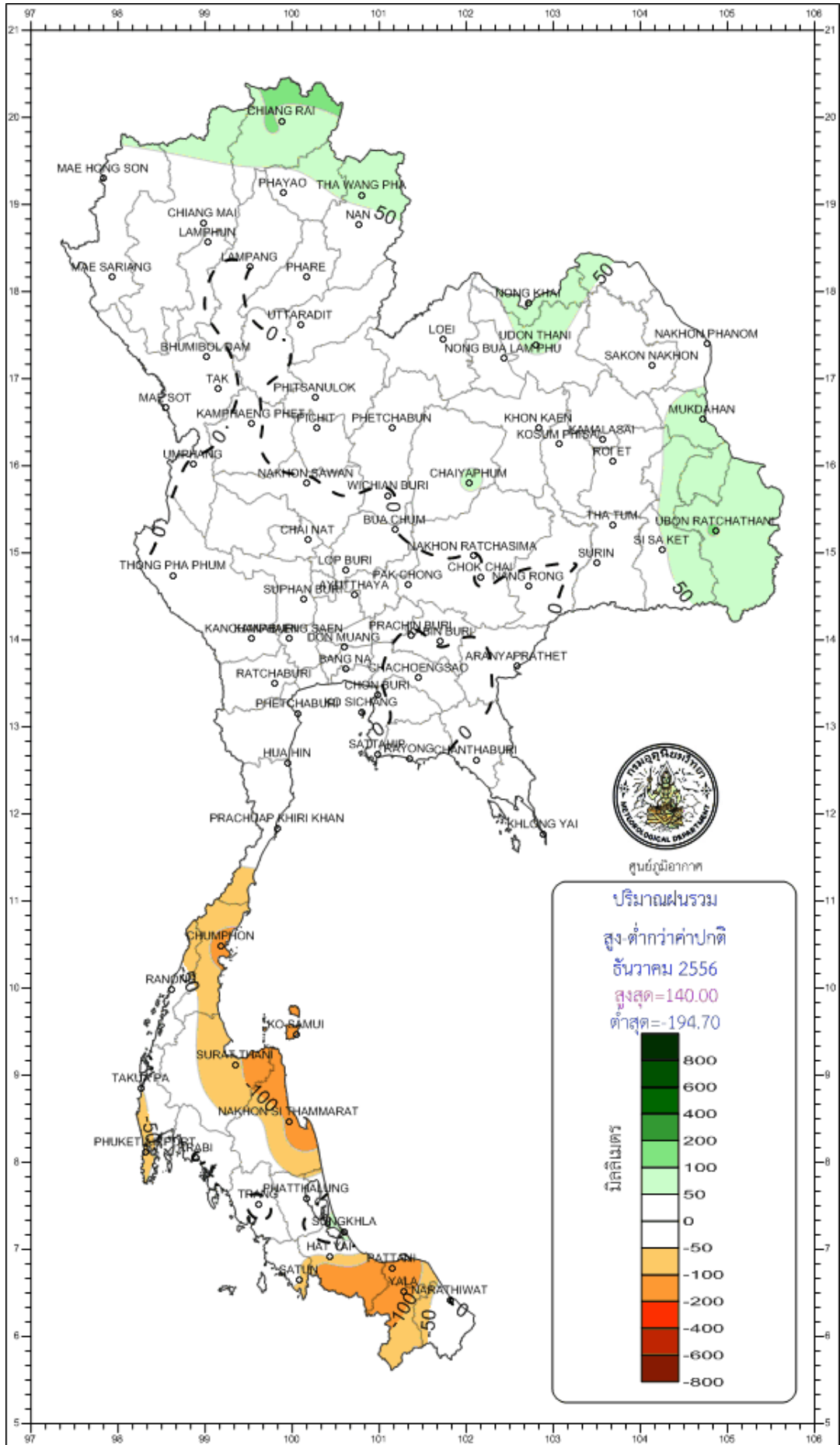
Station	Temperature (°c)		Rainfall (mm)		Accumulative rainfall (mm) Since 1 January	
	Mean	Above or below normal	Actual	Above or below normal	Actual	Above or below normal
Phetchaburi	23.8	-1.6	0.0	-11.6	1137.8	150.5
Hua Hin	24.6	-1.2	0.0	-7.9	1112.5	157.4
Prachuap Khiri Khan	24.5	-1.0	0.0	-15.0	1418.5	326.7
Chumphon	24.8	-0.5	7.3	-116.0	1930.5	57.8
Surat Thani	25.5	0.0	51.7	-77.7	1637.6	15.6
Ko Samui	26.7	0.1	84.3	-126.0	1562.6	-397.5
Nakhon Si Thammarat	25.8	0.1	342.2	-109.5	2868.6	372.1
Songkhla	27.0	0.2	584.7	140.0	2793.6	726.9
Hat Yai Airport	25.9	0.3	228.9	-38.8	1968.4	242.1
Pattani Airport	26.2	0.3	183.6	-194.7	1625.8	-239.3
Narathiwat	26.3	0.4	567.5	1.9	2995.6	534.9
Over the area	25.6	-0.2	186.4	-50.5 -21%	1913.8	176.9 10%

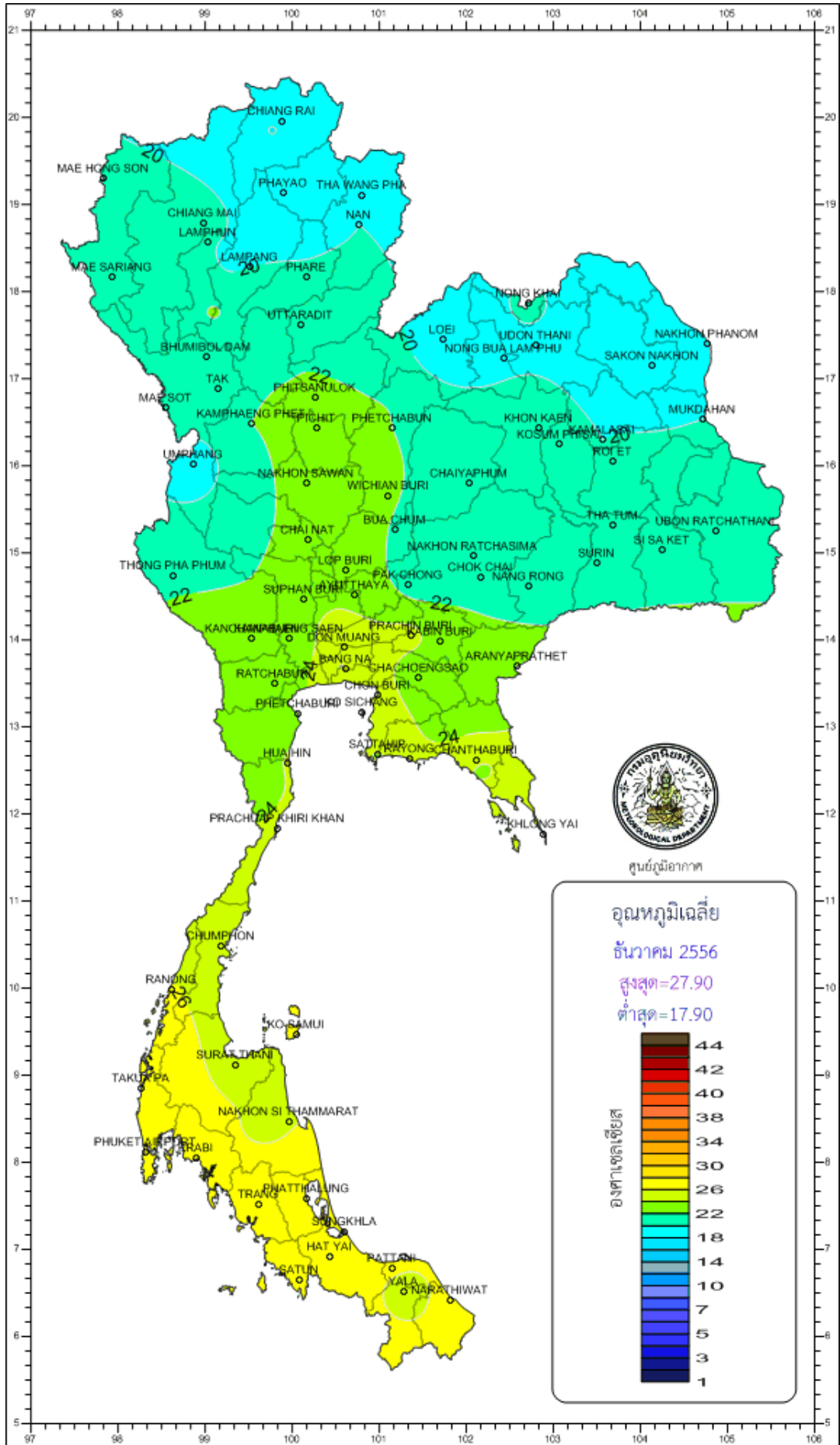
Southern Thailand, west coast

Station	Temperature (°c)		Rainfall (mm)		Accumulative rainfall (mm) Since 1 January	
	Mean	Above or below normal	Actual	Above or below normal	Actual	Above or below normal
Ranong	26.2	-0.1	41.8	-3.7	4534.8	466.4
Takua Pa	27.1	0.7	10.6	-51.1	4776.5	1118.9
Phuket	27.9	0.3	24.4	-48.0	2603.4	383.9
Phuket Airport	27.4	0.7	6.1	-61.3	2948.9	473.9
Ko Lanta	27.1	0.2	13.2	-42.4	2750.2	573.6
Trang Airport	26.4	0.2	170.3	44.9	2488.7	340.2
Satun	27.3	0.3	57.8	-39.1	2213.1	-76.8
Over the area	27.1	0.4	46.3	-28.7 -38%	3187.9	468.6 17%

- NOTES :
- 1) Mean temperature is the average of daily dry-bulb temperature
 - 2) "T" is trace, rainfall amount less than 0.1 mm.
 - 3) "blank" is incomplete data.
 - 4) Temperature and rainfall are preliminary data.







ศูนย์ภูมิอากาศ

