

## Monthly Weather Summary in Thailand August 2014

The southwest monsoon prevailed over the Andaman Sea, Thailand and the Gulf of Thailand throughout the month. The monsoon trough lay across Myanmar, Laos and upper Vietnam during early and mid-month. After that it moved southward to lie across the northern, central and northeastern parts toward the low pressure cell in the Gulf of Tonkin coupled with the covering of low pressure cell over the northern part of Thailand for few days. These caused fairly widespread rain especially during late month that downpour of rain occurred in much of upper Thailand. In southern Thailand, abundant rainfall was periodically observed with isolated heavy to very heavy rainfall mainly along the west coast. The total rainfall over Thailand in August was 4 percent higher than normal with above normal in most parts of Thailand i.e. northern part 20.9 mm (9%), central part 13.0 mm (7%), southern part (east coast) 16.7 mm (13%) and southern part (west coast) 46.9 mm (12%) except for below normal in northeastern part 5.3 mm (2%) and eastern part 17.1 mm (6%). Mean temperatures were above normal in almost areas.

**1 – 10 August:** The moderate southwest monsoon prevailed over Andaman Sea, Thailand and The Gulf of Thailand throughout the period. In addition, the monsoon trough lay over upper Myanmar, Laos and upper Vietnam during mid-period with the covering of low pressure cell over upper Vietnam during early period. These caused plentiful of rain over upper Thailand nearly the whole period, heavy to very heavy rainfall was found in several areas of the northern, northeastern and along the coastal areas of eastern parts mainly during early and mid-period. Flash flooding occurred at Chiang Rai province on August 2 with flooding at Amnat Charoen province on August 3 and at Mukdahan province on August 6. Mudslide occurred at Tak province on August 2 and at Nan province on August 2 and 4 and also at Mae Hong Son province on August 2 and 6. The maximum daily rainfall in upper Thailand was 155.2 mm at Klong Yai in Trat province on August 5. Southern Thailand obtained abundant rainfall especially along the west coast. The highest daily rainfall amount was 95.3 mm at Ranong province on August 5, including thunderstorm at Trang province on August 8.

**11 – 20 August:** The low pressure trough lay across Myanmar, Laos and upper Vietnam nearly the whole period and the southwest monsoon which prevailed over Thailand was weak during early period. Consequently, rainfall relatively decreased in the northeastern and eastern parts whereas plentiful of rainfall mainly observed in the northern and central parts. The maximum daily rainfall of 134.1 mm was measured at Khet Bang Kapi Office in Bangkok Metropolis on August 16. Flash floods occurred at Phetchabun province on August 16 and at Phrae province on August 19 as well as at Nan and Lampang provinces on August 20. Gusty wind occurred at Loei province on August 20. In southern part, plentiful of rain was observed during mid and late period in particular along the west coast. The heaviest daily rainfall was 159.0 mm at Ko Lanta in Krabi province on August 15, including flash flooding and mudslide at Surat Thani province on August 17.

**21 – 31 August:** The monsoon trough migrated southwards to lie over upper Thailand from the middle of the period. It lay over lower northern, central and northeastern parts towards the low pressure cell in the Gulf of Tonkin during August 27-28. Moreover, low pressure cell covering upper northern part of Thailand moved further to Myanmar during August 29-30. Besides, the southwest monsoon prevailed over the Andaman Sea, Thailand and the Gulf of Thailand throughout the period. These induced an abundant rainfall in upper Thailand nearly the whole period, including heavy to very heavy rainfall in many areas during mid and late period with the maximum daily rainfall of 210.5 mm at Wiang Chiang Rung in Chiang Rai province on August 29. Flash flood occurred at Khamphaeng Phet and Mae Hong Son provinces on August 27 and at Chiang Rai and Phayao provinces on August 29. Flood also affected Pichit province and mudslide at Chiang Mai province on August 30. Gusty wind occurred at Si Sa Ket province on August 26 and at Trat province on August 28. In southern part, rainfall relatively increased with heavy to very heavy rainfall in several areas during mid-period. There was heaviest daily rainfall of 112.6 mm at Chawang in Nakhon Si Thammarat province on August 25 with flash flooding at Phuket and Krabi provinces on August 24.

---

**Note :** Rainfall, temperatures and natural disasters in this report were updated up to September 2, 2014.

Climatological Center  
Meteorological Development Bureau  
Meteorological Department

Monthly Current Report  
Rainfall and Accumulative Rainfall  
August 2014

Northern Thailand

Station	Temperature ( °c)		Rainfall (mm)		Accumulative rainfall (mm) Since 1 January	
	Mean	Above or below normal	Actual	Above or below normal	Actual	Above or below normal
Chiang Rai	26.5	0.0	336.7	-21.7	1173.4	-35.1
Mae Hong Son	26.8	-0.1	327.7	88.4	836.7	-86.9
Phayao	26.8	0.1	279.6	75.6	767.2	4.6
Chiang Mai	27.4	0.6	231.3	14.4	752.1	20.3
Tha Wang Pha	27.1	0.2	245.5	-52.3	894.4	-180.2
Nan	27.6	0.3	184.0	-89.2	844.8	-88.8
Lamphun	27.6	0.3	121.4	-51.3	581.3	-52.7
Lampang	27.4	0.0	150.9	-35.4	834.6	135.5
Mae Sariang	26.5	0.3	191.8	-28.6	750.1	-63.7
Phrae	27.4	0.0	223.7	18.2	837.6	36.7
Uttaradit	28.1	0.1	300.2	36.8	1147.5	166.9
Bhumibol Dam	28.2	0.1	220.6	108.6	566.6	-12.9
Tak	28.3	0.4	146.0	30.2	529.4	-57.3
Mae Sot	26.2	0.6	263.4	-58.3	824.7	-325.8
Umphang	24.9	0.6	228.0	-20.4	776.0	-251.6
Phitsanulok	28.0	-0.1	296.6	49.0	813.9	-49.5
Lom Sak	27.5	0.2	202.5	4.4	517.6	-225.0
Phetchabun	27.7	0.4	423.2	224.2	896.4	78.5
Wichian Buri	28.3	0.2	266.9	57.7	760.8	-57.5
Kamphaeng Phet	27.9	0.1	237.4	66.9	900.4	105.0
Over the area	27.3	0.2	243.9	20.9 9%	800.3	-47.1 -6%

Northeastern Thailand

Station	Temperature ( °c)		Rainfall (mm)		Accumulative rainfall (mm) Since 1 January	
	Mean	Above or below normal	Actual	Above or below normal	Actual	Above or below normal
Nong Khai	27.8	0.3	339.4	16.2	1274.7	34.1
Loei	27.3	0.2	101.5	-83.4	784.9	-69.0
Udon Thani	27.8	0.0	333.0	47.9	1001.2	-74.4
Nakhon Phanom	27.3	0.3	444.6	-135.7	2205.0	259.9
Sakon Nakhon	27.6	0.2	248.2	-109.7	1351.7	25.9
Mukdahan	28.0	0.7	345.4	-5.3	1168.6	16.8
Khon Kaen	27.8	0.1	200.6	-15.8	688.8	-188.3
Kosum Phisai	28.4	0.4	357.5	125.6	1030.7	140.2
Roi Et	28.3	0.4	160.6	-91.6	992.6	-5.0
Chaiyaphum	28.0	0.4	143.6	-52.6	487.9	-259.2
Ubon Ratchathani	28.4	0.8	196.5	-106.8	1593.0	451.8
Tha Tum	28.5	0.3	218.6	-9.3	889.6	-87.0
Surin	27.9	0.3	351.7	95.5	966.2	-51.8
Nakhon Ratchasima	28.6	0.5	245.6	88.4	709.1	38.8
Chok Chai	28.2	0.3	171.7	18.2	439.8	-226.5
Nang Rong	28.0	0.2	315.9	134.2	895.9	116.1
Over the area	28.0	0.3	260.9	-5.3 -2%	1030.0	7.6 1%

- NOTES :
- 1) Mean temperature is the average of daily dry-bulb temperature
  - 2) "T" is trace, rainfall amount less than 0.1 mm.
  - 3) "blank" is incomplete data.
  - 4) Temperature and rainfall are preliminary data.

Monthly Current Report  
Rainfall and Accumulative Rainfall  
August 2014

Central Thailand

Station	Temperature ( °c)		Rainfall (mm)		Accumulative rainfall (mm) Since 1 January	
	Mean	Above or below normal	Actual	Above or below normal	Actual	Above or below normal
Nakhon Sawan	28.5	0.1	220.5	42.2	810.7	83.4
Bua Chum	28.2	0.2	172.7	3.5	556.9	-124.8
Lop Buri	28.5	0.2	167.7	16.8	523.5	-144.8
Suphan Buri	28.7	0.2	151.9	33.5	391.9	-112.6
Thong Pha Phum	27.0	0.7	195.2	-148.5	1045.3	-297.4
Kanchanaburi	28.7	0.3	119.1	20.8	431.6	-130.3
Bangkok Airport	28.7	-0.1	249.3	78.4	847.2	-7.8
Bangkok Metropolis	28.8	0.0	276.0	56.7	671.0	-295.0
Over the area	28.4	0.2	194.1	13.0 7%	659.8	-128.6 -16%

Eastern Thailand

Station	Temperature ( °c)		Rainfall (mm)		Accumulative rainfall (mm) Since 1 January	
	Mean	Above or below normal	Actual	Above or below normal	Actual	Above or below normal
Prachin Buri	28.5	0.2	303.6	-54.9	877.7	-398.6
Kabin Buri	27.8	0.1	255.8	-34.6	961.6	-144.4
Aranyaprathet	28.2	0.4	356.9	148.3	923.4	45.4
Chon Buri	29.4	0.4	106.9	-47.2	576.6	-186.9
Ko Sichang	29.0	0.3	135.9	-0.9	432.9	-240.6
Pattaya	28.7	0.3	52.5	-45.1	270.9	-338.6
Sattahip	29.0	0.2	133.9	24.9	478.8	-222.4
Rayong	28.7	-0.1	133.3	1.0	418.9	-458.0
Chanthaburi	28.0	0.5	298.0	-199.2	1731.4	-406.3
Khlong Yai	27.1	0.1	1077.3	36.9	3970.5	278.0
Over the area	28.4	0.2	285.4	-17.1 -6%	1064.3	-207.3 -16%

- NOTES :
- 1) Mean temperature is the average of daily dry-bulb temperature
  - 2) "T" is trace, rainfall amount less than 0.1 mm.
  - 3) "blank" is incomplete data.
  - 4) Temperature and rainfall are preliminary data.

Monthly Current Report  
Rainfall and Accumulative Rainfall  
August 2014

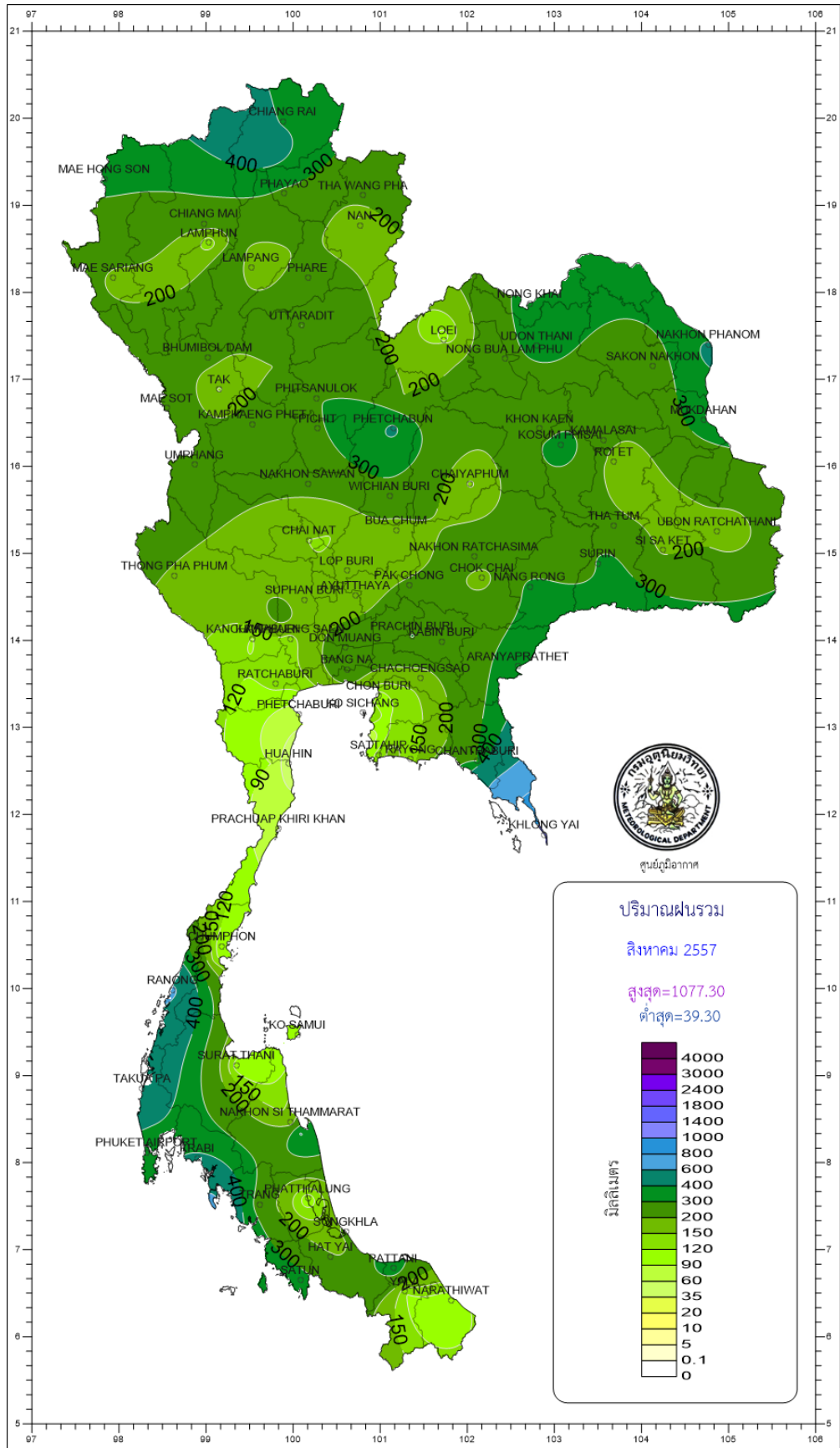
Southern Thailand, east coast

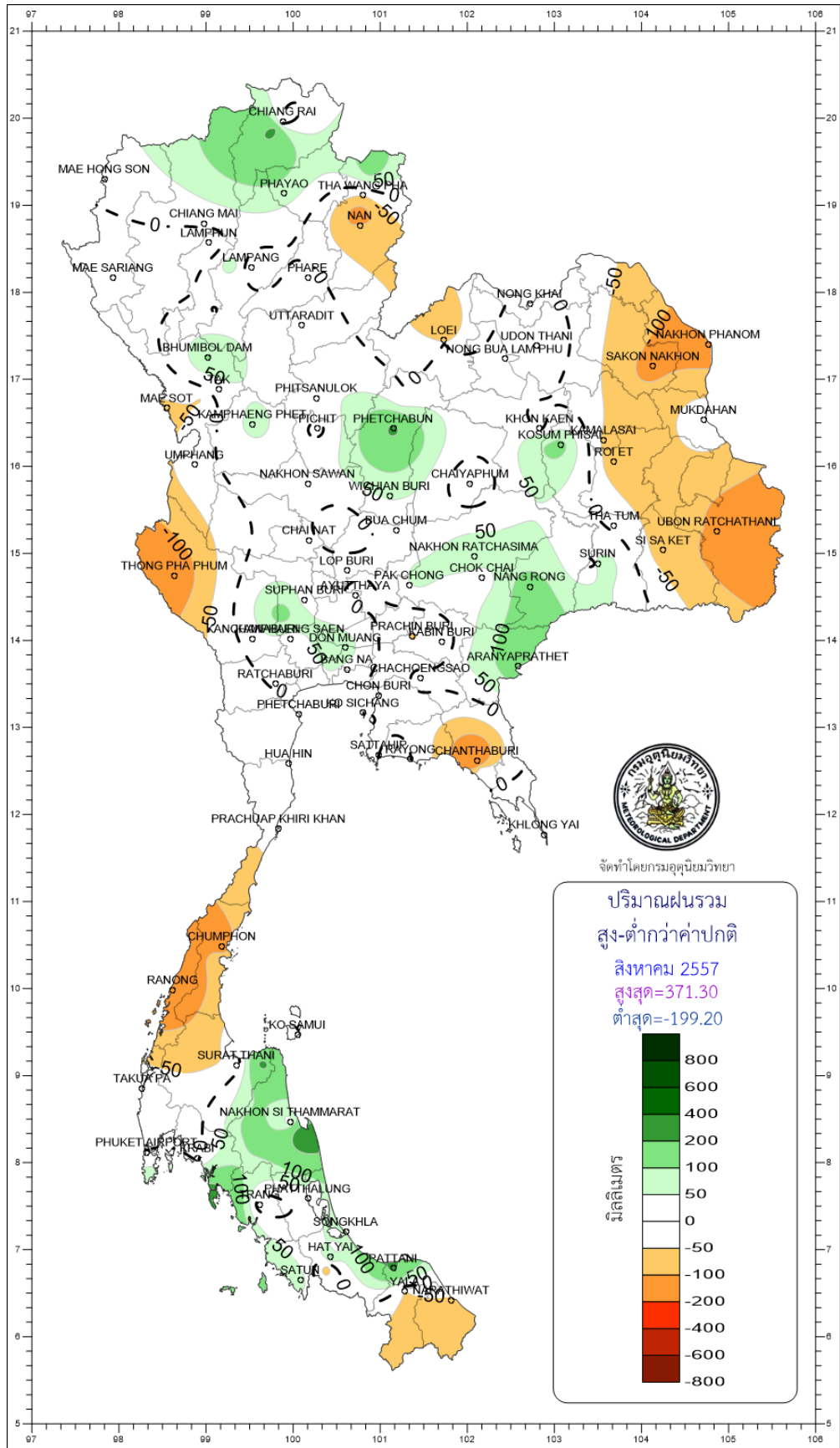
Station	Temperature ( °c)		Rainfall (mm)		Accumulative rainfall (mm) Since 1 January	
	Mean	Above or below normal	Actual	Above or below normal	Actual	Above or below normal
Phetchaburi	29.2	0.6	67.3	-25.0	330.2	-119.7
Hua Hin	29.3	0.8	39.3	-31.9	184.6	-294.8
Prachuap Khiri Khan	28.4	0.6	68.1	-31.0	406.4	-188.6
Chumphon	27.6	0.5	95.2	-112.3	859.4	-172.2
Surat Thani	27.3	0.3	103.9	-35.7	638.6	-99.3
Ko Samui	28.5	0.3	112.7	1.8	507.3	-304.4
Nakhon Si Thammarat	27.8	0.0	159.1	29.3	799.7	-149.3
Songkhla	28.4	0.2	220.2	110.8	649.6	-32.5
Hat Yai Airport	27.4	0.0	224.1	111.1	528.7	-227.7
Pattani Airport	27.6	0.1	359.5	225.5	718.9	2.0
Narathiwat	27.6	0.2	99.3	-59.0	731.4	-171.7
Over the area	28.1	0.3	140.8	16.7 13%	577.7	-160.0 -22%

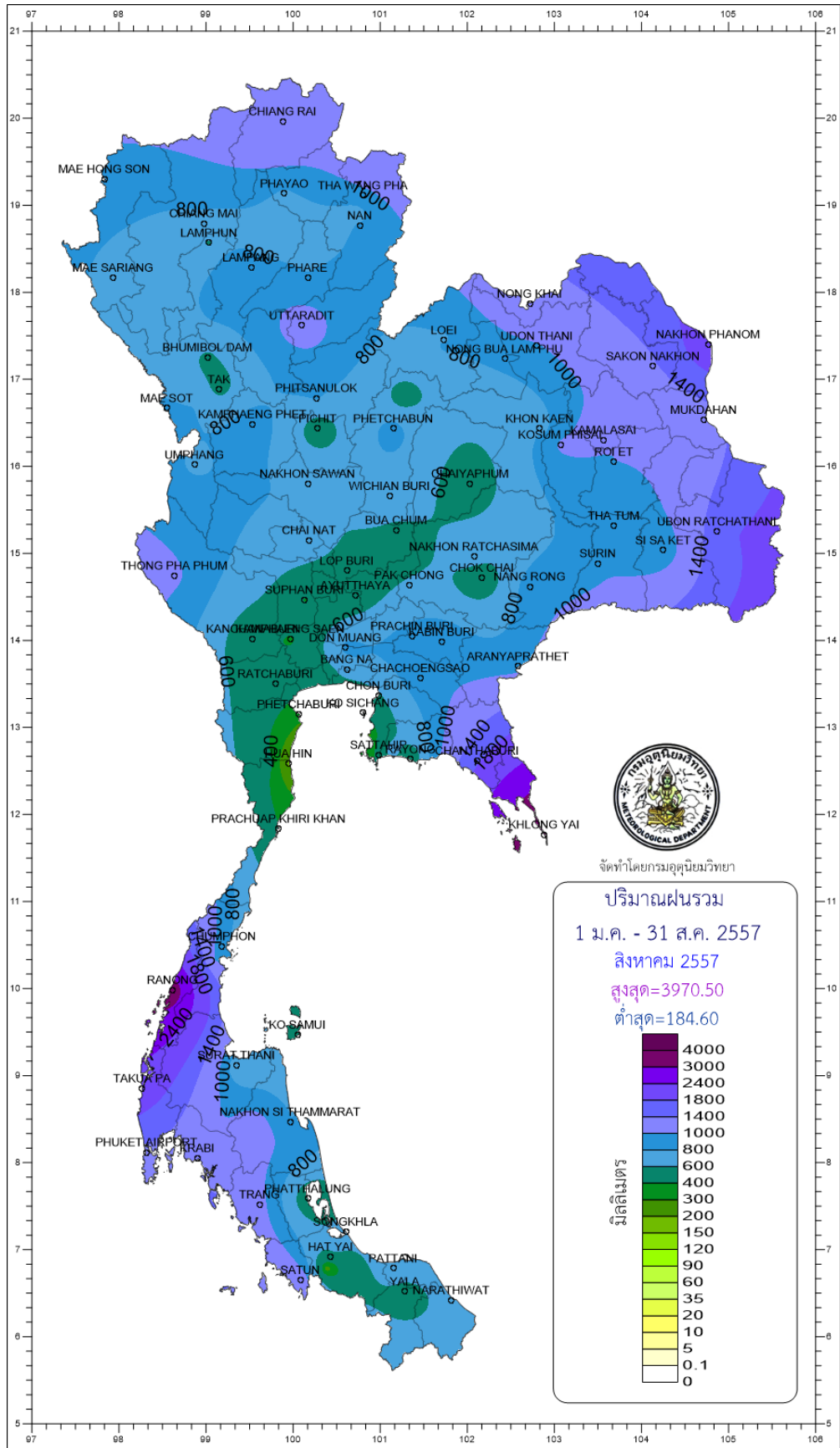
Southern Thailand, west coast

Station	Temperature ( °c)		Rainfall (mm)		Accumulative rainfall (mm) Since 1 January	
	Mean	Above or below normal	Actual	Above or below normal	Actual	Above or below normal
Ranong	26.9	0.1	634.8	-154.3	3377.4	577.8
Takua Pa	26.8	-0.6	534.5	-10.5	2164.7	-77.0
Phuket	28.1	0.0	361.6	74.8	1308.8	20.4
Phuket Airport	28.0	0.0	332.2	2.4	1317.6	-129.7
Ko Lanta	28.1	-0.1	675.5	371.3	1493.5	175.3
Trang Airport	27.2	0.2	246.4	-28.7	1080.6	-148.0
Satun	27.3	-0.1	332.9	73.6	1242.4	-59.3
Over the area	27.5	-0.1	445.4	46.9 12%	1712.1	51.3 3%

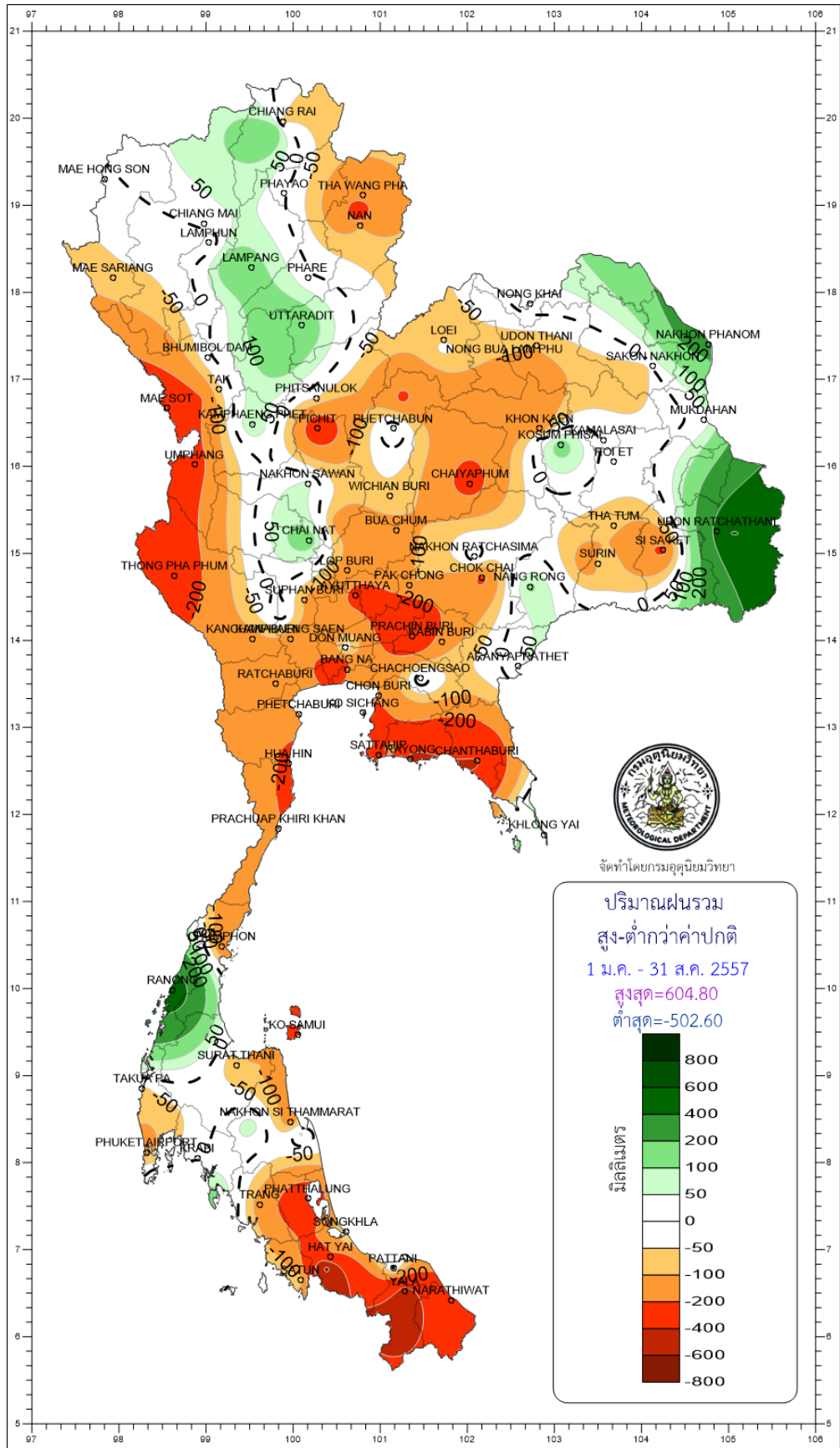
- NOTES :
- 1) Mean temperature is the average of daily dry-bulb temperature
  - 2) "T" is trace, rainfall amount less than 0.1 mm.
  - 3) "blank" is incomplete data.
  - 4) Temperature and rainfall are preliminary data.

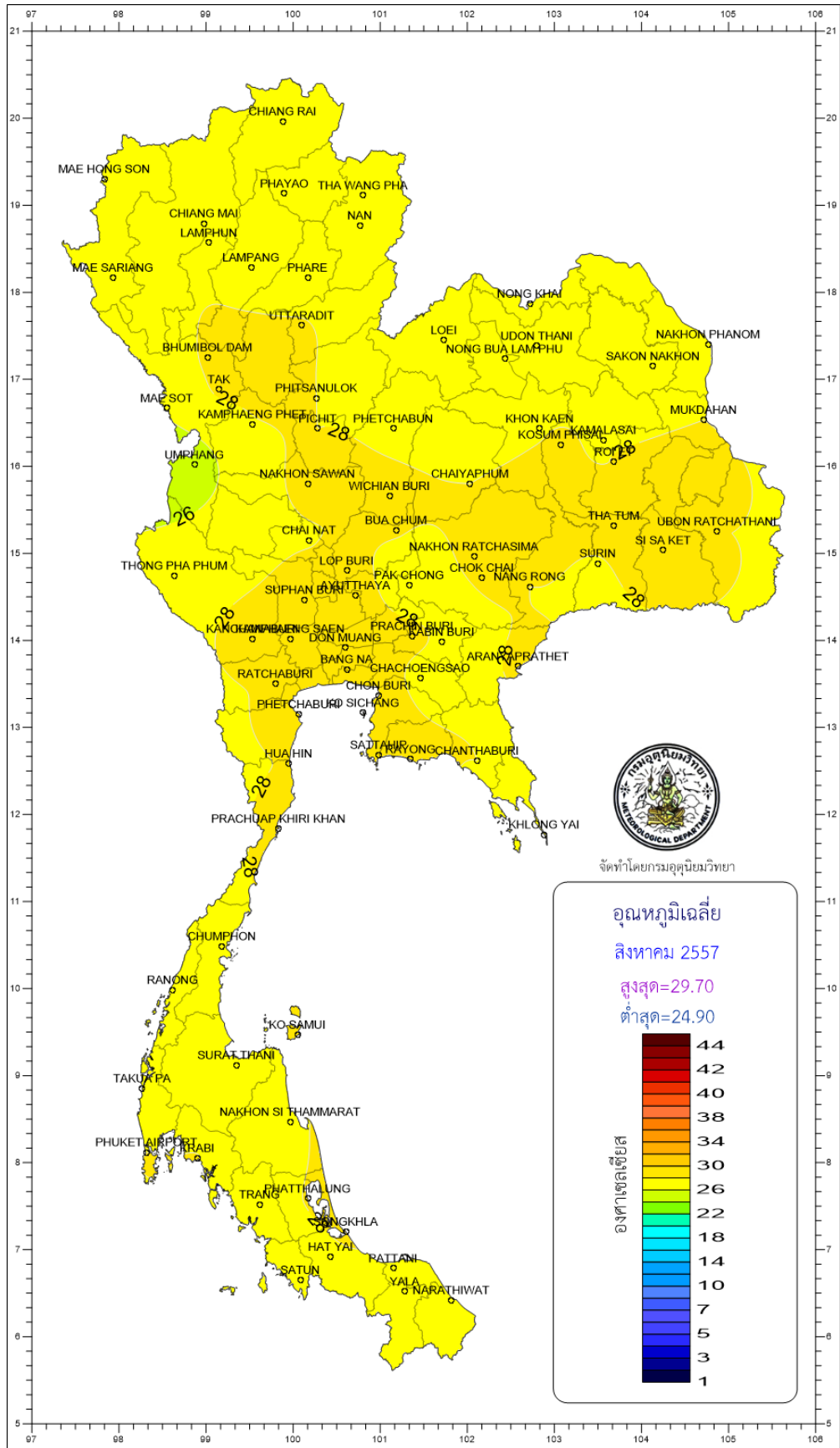




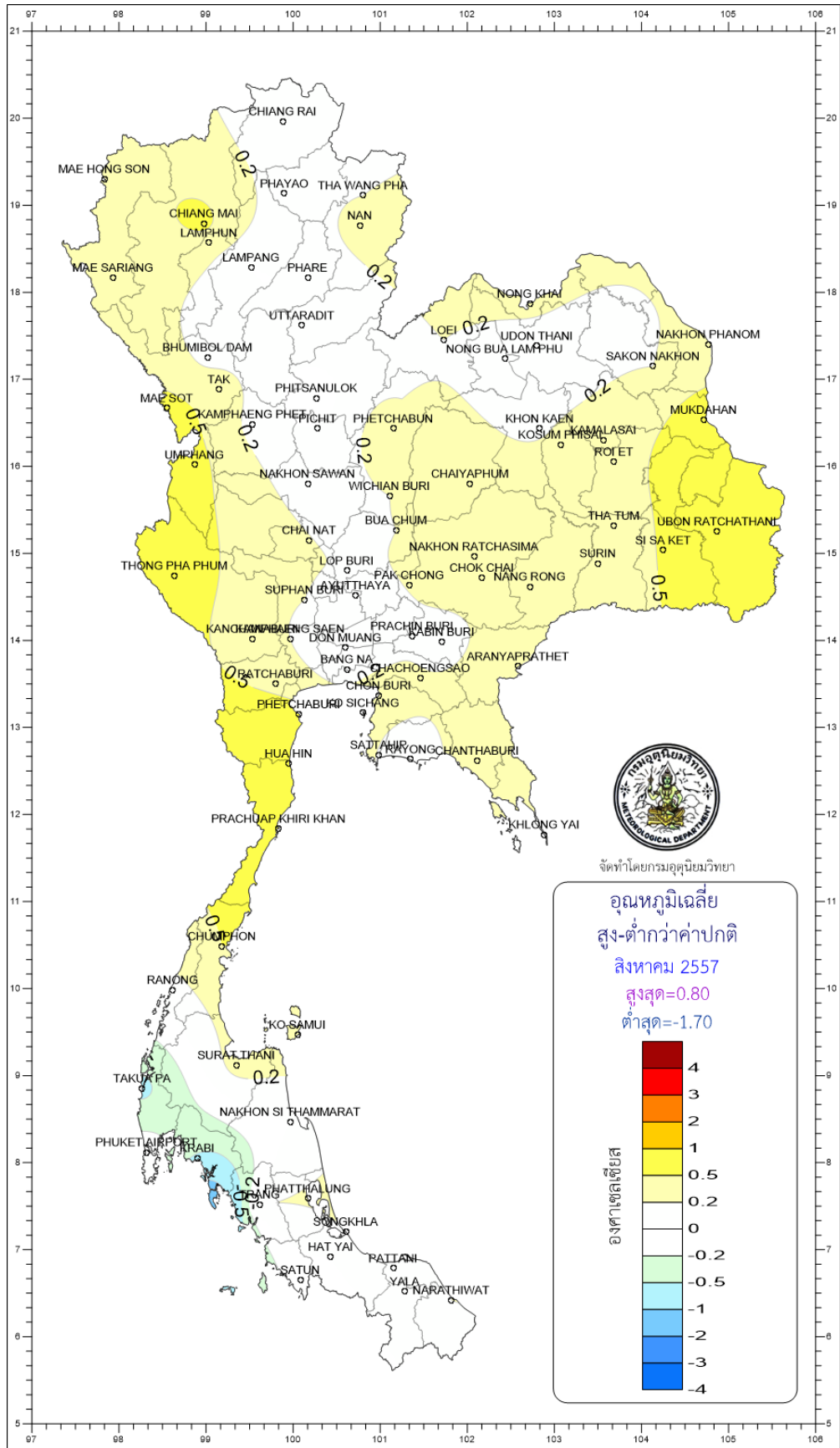








CHIANG RAI  
MAE HONG SON  
PHAYAO  
THA WANG PHA  
CHIANG MAI  
LAMPHUN  
NAN  
LAMPANG  
PHARE  
MAE SARIANG  
UTTARADIT  
NONG KHAI  
LOEI  
UDON THANI  
NAKHON PHANOM  
BHUMBOL DAM  
NONG BUA LAMPHU  
SAKON NAKHON  
TAK  
PHITSANULOK  
KHAMPHANG PHET  
PHICHIT  
PHETCHABUN  
KHON KAEN  
KAMALASAI  
MAE SOT  
KOSUM PHISAI  
MUKDAHAN  
UMPHANG  
NAKHON SAWAN  
WICHIAN BURI  
CHAIYAPHUM  
RONG  
CHAI NAT  
BUA CHUM  
THA TUM  
UBON RATCHATHANI  
THONG PHA PHUM  
LOP BURI  
NAKHON RATCHASIMA  
SURIN  
SI SA KET  
SUPHAN BURI  
PAK CHONG  
CHOK CHAI  
NANG RONG  
KANKAMPHANG  
SAEN  
DON MUANG  
PRACHIN BURI  
BANG NA  
RATCHABURI  
CHACHOENGSAO  
ARANG  
PRATHET  
CHON BURI  
PHETCHABURI  
SICHANG  
HUA HIN  
SATTARIP  
WYONGCHANTHABURI  
PRACHUAP KHIRI KHAN  
KHLONG YAI  
CHUMPHON  
RANONG  
KO SAMUI  
SURAT THANI  
TAKU PA  
NAKHON SI THAMMARAT  
PHUKET AIRPORT  
RABAI  
PHATTHALUNG  
TRANG  
SANGKHLA  
HAT YAI  
PATTANI  
SATUN  
YALA  
NARATHIWAT



จัดทำโดยกรมอุตุนิยมวิทยา

อุณหภูมิเฉลี่ย  
สูง-ต่ำกว่าค่าปกติ  
สิงหาคม 2557  
สูงสุด=0.80  
ต่ำสุด=-1.70

