

Monthly Weather Summary in Thailand April 2019

Under the influence of the heat low pressure cell and the southerly winds, the weather of upper Thailand induced average temperature of April higher than normal and the new highest record of maximum temperature was established in some places. Generally hot weather and very hot weather in several areas which hot weather almost the areas of the southern part. For rainfall, the high pressure area from China extended its ridge to cover upper Thailand during the beginning and the end of the month in addition with the passage of the westerly trough from Myanmar over the northern and northeastern parts during late month. Moreover, the easterly wind prevailed over the southern part throughout the month. These conditional caused thundershower, gusty wind and hail occurred in some places especially during the beginning and the end of the month. Monthly rainfall was below normal in all parts i.e. northern part 42.7 mm (60%), northeastern part 27.4 mm (32%), central part 43.6 mm (55%), eastern part 12.9 mm (13%), southern part (east coast) 55.4 mm (73%) and southern part (west coast) 13.4 mm (8%). The average amount of rainfall in April was lower than normal with the deviation of 34.4 millimeter or about 39%.

1 – 10 April: The high pressure area from China extended its ridge to cover upper Thailand and the South China Sea during early period. After that the heat low pressure cell covering upper Thailand throughout the period in addition with the southerly and southeasterly wind prevailing over the mentioned areas brought rainfall to upper Thailand mainly during early period and mid-period and hot weather nearly the whole areas with very hot weather in some areas especially increasing in temperature with very hot weather was found in several areas during late period. The highest maximum temperature was 42.3 °C at Thoen in Lampang province on April 10. The maximum daily rainfall was 107.6 mm at Mueang in Rayong province on April 7. Thundershower and gusty wind was reported at Phichit, Uttaradit, Kalasin, Nakhon Sawan and Uthai Thani provinces on April 1, at Ubon Ratchathani, Khon Khen and Lop Buri provinces on April 3, at Phrae, Maha Sarakham and Ubon Ratchathani provinces on April 5 and at Phetchabun with Loei provinces on April 7. In southern part, scattered to fairly widespread rain was found mainly along west coast with heavy to very heavy rainfall in some areas by the prevailing of the easterly wind over southern part throughout the period. The highest daily rainfall of 102.3 mm at Sadao in Songkhla province on April 3.

11 – 20 April: Heat low pressure cell covering upper Thailand and the southerly and southeasterly wind prevailing over upper Thailand throughout the period. The high pressure areas from China covered the upper Thailand and the South China Sea during mid-period. The weather in Thailand was hot weather almost the whole areas with very hot weather in some areas in the northern, northeastern and upper central parts. The highest maximum temperature was 44.2 °C at Thoen in Lampang province on April 18. For rainfall, less rainfall was mainly observed in upper Thailand almost the period except for isolated to scattered rain was found in northeastern part during mid-period. The highest daily rainfall in upper Thailand was 151.0 mm at Chaibadan in Lop Buri province on April 12 and thundershower with gusty wind was reported at Kamphaeng Phet, Ubon Ratchathani, Si Saket, Nakhon Ratchasima, Nakhon Phanom, Sakon Nakhon and Lop Buri provinces on April 12-14. In southern part, isolated to scattered rain almost the whole period with heavy rainfall in some areas mainly along west coast. The maximum daily rainfall of 65.0 mm at Ban Na Doem in Surat Thani province on April 13.

21 – 30 April: The heat low pressure cell covered upper Thailand almost the whole period in addition with the southerly and southeasterly wind prevailed over the mentioned areas. The weather in upper Thailand was generally hot weather with very hot weather in some areas. The maximum daily temperature was 43.5 °C at Thoen in Lamphang province on April 21. For rainfall, the effect of westerly trough moved through the northern and northeastern parts during late period resulted in increasing rainfall over upper Thailand from last period with isolated to scattered rain except for fairly widespread rain with heavy to very heavy rainfall in some areas on April 22 with the maximum rainfall of 98.0 mm at Non Daeang in Nakhon Ratchasima province. Thundershower and gusty wind occurred at Chiang Mai, Nan, Phetchabun, Phitsanulok, Phayao, Uttaradit, Lamphang, Phare, Kamphaeng Phet, Loei, Khon Khen, Surin, Nakhon Ratchasima, Nakhon Phanom, Maha Sarakham, Chaiyaphum, Nong Bua Lam Phu, Roi Et, Buriram, Udon Thani, Ubon Ratchathani, Sakon Nakhon, Ang Thong, Sara Buri, Uthai Thani, Chainat, Lop Buri, Nakhon Sawan, Prachinburi, Nakhon Nayok and Trat provinces on April 22 – 27 and hail was reported at Chiang Mai and Payao provinces on April 25 and at Surin province on April 28. In southern part, the easterly wind prevailed over southern part almost the whole period caused less rainfall during early period and mid-period then scattered to fairly widespread rain with heavy rainfall in some areas. The highest daily rainfall of 90.0 millimeter at Thung Yai in Nakhon Si Thammarat province on April 29

Breaking records of the highest maximum temperature in March

Station	New Record 2019		Previous Record		Start since
	Temperature (°C)	Date	Temperature (°C)	Date / Year	
Thoen(Lamphang)	44.2	18	43.8	11/2559	2547
Loei	43.4	20	43.1	25/2501	2498
Kosum Phisai (Maha Sarakham)	43.3	20	42.5	11/2559	2513
Pathum Thani Agromet Stn.	41.2	20	41.7	10/2559	2541
Bangkok Port	39.5	20	39.2	24/2552	2537
Laem Chabang (Chon Buri)	39.2	24	38.5	15/2558	2537
Phetchaburi	38.4	20	37.8	23/2533	2524
Pattani	38.9	25	38.7	21/2559	2507
Phuket	38.0	10,25	37.8	9/2522	2495
				1/2541	
				20/2559	

Note : Rainfall, temperatures and natural disasters in this report were updated up to May 7, 2019

Climatological Center
 Meteorological Development Division
 Meteorological Department

Monthly Current Report
Rainfall and Accumulative Rainfal
April 2019

Northern Thailand

Station	Temperature (°c)		Rainfall (mm)		Accumulative rainfall (mm) Since 1 January	
	Mean	Above or below normal	Actual	Above or below normal	Actual	Above or below normal
Chiang Rai	29.2	2.1	14.7	-83.2	79.8	-67.6
Mae Hong Son	31.4	1.3	0.0	-63.2	55.4	-37.0
Phayao	30.0	1.3	13.7	-75.5	72.3	-62.0
Chiang Mai	31.2	1.9	22.3	-35.0	90.1	1.9
Tha Wang Pha	30.0	1.7	47.5	-55.0	85.8	-66.2
Nan	30.8	1.8	65.6	-34.0	162.0	13.4
Lamphun	31.2	1.1	13.5	-31.0	52.1	-13.2
Lampang	32.6	2.6	8.7	-57.2	45.5	-54.8
Mae Sariang	30.6	1.3	0.0	-44.7	46.7	-20.2
Phrae	32.7	2.7	64.5	-17.6	107.9	-16.4
Uttaradit	32.8	2.0	0.6	-70.4	11.6	-102.8
Bhumibol Dam	33.2	2.3	3.0	-63.1	15.7	-81.0
Tak	33.5	2.0	47.8	-9.8	63.9	-16.6
Mae Sot	30.9	1.8	0.0	-44.8	80.3	10.1
Umphang	27.6	1.5	35.0	-66.3	124.7	-40.4
Phitsanulok	32.1	1.3	18.9	-36.8	139.3	39.5
Lom Sak	30.6	1.4	12.3	-50.9	129.0	0.1
Phetchabun	31.5	1.7	64.9	-11.1	154.7	9.1
Wichian Buri	31.7	1.3	96.4	6.5	139.2	-21.6
Kamphaeng Phet	32.2	1.8	42.0	-10.8	76.0	-28.9
Over the area	31.3	1.8	28.6	-42.7 -60%	86.6	-27.8 -24%

Northeastern Thailand

Station	Temperature (°c)		Rainfall (mm)		Accumulative rainfall (mm) Since 1 January	
	Mean	Above or below normal	Actual	Above or below normal	Actual	Above or below normal
Nong Khai	31.7	2.2	36.6	-46.8	139.8	-9.0
Loei	30.5	2.1	8.7	-94.0	38.1	-126.2
Udon Thani	31.8	2.0	14.6	-59.5	87.2	-64.9
Nakhon Phanom	30.8	1.8	117.8	16.7	182.4	-12.8
Sakon Nakhon	30.9	1.8	64.0	-29.3	96.6	-88.2
Mukdahan	31.6	2.0	27.3	-49.1	107.6	-28.7
Khon Kaen	31.6	1.7	57.6	-32.0	116.4	-40.7
Kosum Phisai	32.1	2.0	28.1	-60.9	61.9	-97.4
Roi Et	31.6	1.8	112.4	36.5	149.8	9.9
Chaiyaphum	31.9	1.9	66.9	-25.7	82.8	-79.9
Ubon Ratchathani	31.9	1.9	91.4	4.6	110.9	-23.8
Tha Tum	30.7	0.3	113.1	26.4	137.4	-14.7
Surin	31.2	1.4	49.8	-43.5	83.9	-72.1
Nakhon Ratchasima	31.7	1.7	21.2	-51.0	48.5	-85.1
Chok Chai	31.0	1.4	57.1	-24.2	60.1	-77.5
Nang Rong	30.6	1.1	75.9	-5.7	80.6	-73.2
Over the area	31.4	1.7	58.9	-27.4 -32%	99.0	-55.3 -36%

- NOTES : 1) Mean temperature is the average of daily dry-bulb temperature
2) "T" is trace, rainfall amount less than 0.1 mm.
3) "blank" is incomplete data.
4) Temperature and rainfall are preliminary data.

Monthly Current Report
Rainfall and Accumulative Rainfall
April 2019

Central Thailand

Station	Temperature (°c)		Rainfall (mm)		Accumulative rainfall (mm) Since 1 January	
	Mean	Above or below normal	Actual	Above or below normal	Actual	Above or below normal
Nakhon Sawan	33.2	1.8	37.4	-26.3	79.4	-33.6
Bua Chum	31.8	1.5	21.8	-59.6	63.0	-80.0
Lop Buri	31.9	1.5	18.4	-63.1	20.9	-105.3
Suphan Buri	32.2	1.8	50.5	1.4	51.3	-27.3
Thong Pha Phum	31.5	1.7	11.0	-90.8	45.6	-124.4
Kanchanaburi	32.4	1.4	13.6	-64.9	27.5	-101.5
Bangkok Airport	31.9	1.5	95.8	7.3	98.6	-50.7
Bangkok Metropolis	31.7	1.2	38.8	-52.6	49.1	-117.7
Over the area	32.1	1.6	35.9	-43.6 -55%	54.4	-80.1 -60%

Eastern Thailand

Station	Temperature (°c)		Rainfall (mm)		Accumulative rainfall (mm) Since 1 January	
	Mean	Above or below normal	Actual	Above or below normal	Actual	Above or below normal
Prachin Buri	31.9	1.8	57.1	-60.9	81.6	-109.8
Kabin Buri	30.6	0.8	57.7	-41.1	156.4	-27.8
Aranyaprathet	31.4	1.3	39.0	-46.7	140.2	-30.9
Chon Buri	31.2	1.0	79.5	5.4	148.7	2.9
Ko Sichang	31.1	1.3	6.7	-70.6	29.5	-124.0
Pattaya	30.5	1.2	88.5	24.5	170.9	23.7
Sattahip	31.1	1.3	15.7	-63.2	119.0	-63.7
Rayong	30.7	0.7	133.3	51.7	249.9	40.8
Chanthaburi	29.9	1.2	103.5	-21.7	217.9	-34.3
Khlong Yai	29.3	0.8	278.8	93.4	478.8	54.9
Over the area	30.8	1.2	86.0	-12.9 -13%	179.3	-26.9 -13%

- NOTES :
- 1) Mean temperature is the average of daily dry-bulb temperature
 - 2) "T" is trace, rainfall amount less than 0.1 mm.
 - 3) "blank" is incomplete data.
 - 4) Temperature and rainfall are preliminary data.

Monthly Current Report
Rainfall and Accumulative Rainfall
April 2019

Southern Thailand, east coast

Station	Temperature (°c)		Rainfall (mm)		Accumulative rainfall (mm) Since 1 January	
	Mean	Above or below normal	Actual	Above or below normal	Actual	Above or below normal
Phetchaburi	31.1	1.4	0.0	-36.9	16.6	-68.7
Hua Hin	30.7	1.1	0.0	-46.4	28.6	-98.8
Prachuap Khiri Khan	30.7	1.5	0.0	-55.5	140.4	-33.1
Chumphon	29.9	1.2	10.3	-75.5	294.6	7.5
Surat Thani	29.8	1.5	5.3	-68.1	115.8	-30.7
Ko Samui	30.2	1.1	10.7	-72.4	275.7	-28.8
Nakhon Si Thammarat	29.6	1.2	16.2	-90.8	454.7	44.4
Songkhla	29.7	0.8	21.1	-54.0	233.1	-25.1
Hat Yai Airport	28.9	0.9	96.8	-21.8	255.8	-16.1
Pattani Airport	29.4	1.2	39.6	-35.0	313.7	106.8
Narathiwat	29.2	0.9	19.9	-52.9	333.8	-11.7
Over the area	29.9	1.1	20.0	-55.4 -73%	223.9	-14.1 -6%

Southern Thailand, west coast

Station	Temperature (°c)		Rainfall (mm)		Accumulative rainfall (mm) Since 1 January	
	Mean	Above or below normal	Actual	Above or below normal	Actual	Above or below normal
Ranong	29.6	0.8	216.5	63.9	332.1	88.3
Takua Pa	29.0	0.8	195.5	-14.5	367.0	-38.1
Phuket	30.9	1.5	124.6	-18.3	188.8	-81.8
Phuket Airport	30.0	1.4	78.2	-75.8	270.0	-47.7
Ko Lanta	29.5	0.5	133.0	14.0	163.8	-50.6
Trang Airport	29.3	1.0	208.2	68.5	369.6	93.2
Satun	29.1	0.7	74.6	-131.4	219.6	-175.4
Over the area	29.6	0.9	147.2	-13.4 -8%	273.0	-30.3 -10%

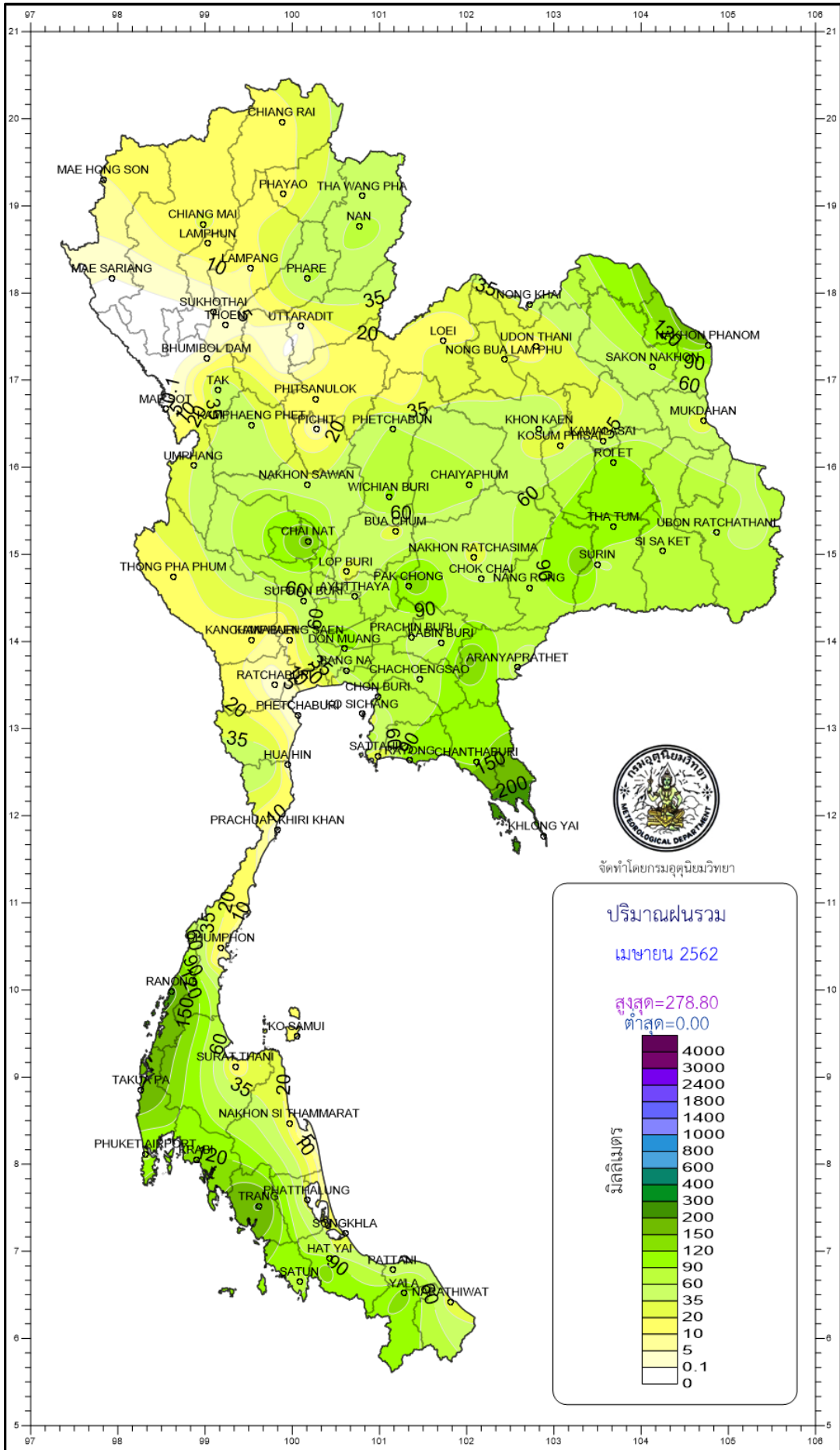
- NOTES :
- 1) Mean temperature is the average of daily dry-bulb temperature
 - 2) "T" is trace, rainfall amount less than 0.1 mm.
 - 3) "blank" is incomplete data.
 - 4) Temperature and rainfall are preliminary data.

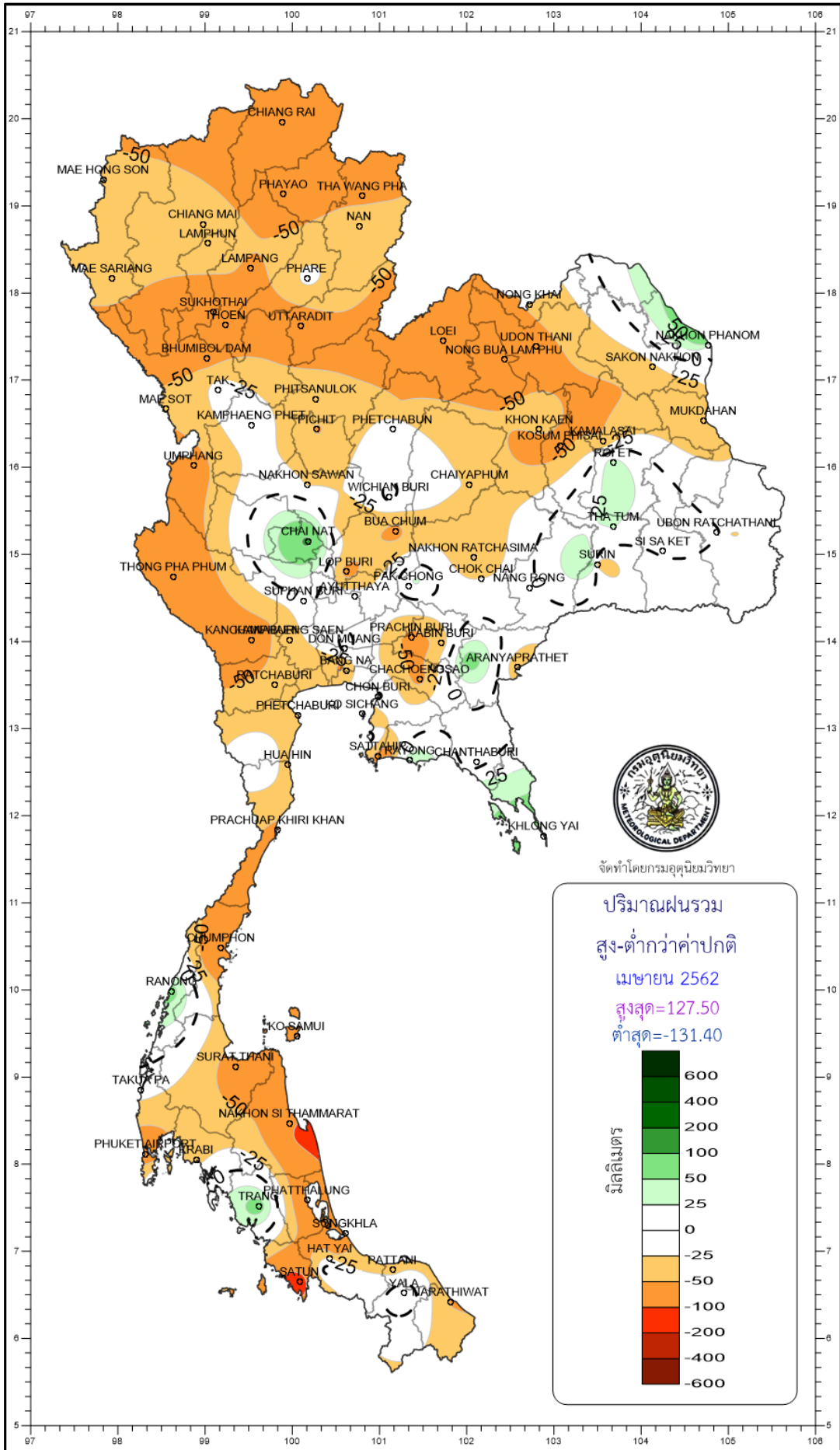
Monthly Current Report

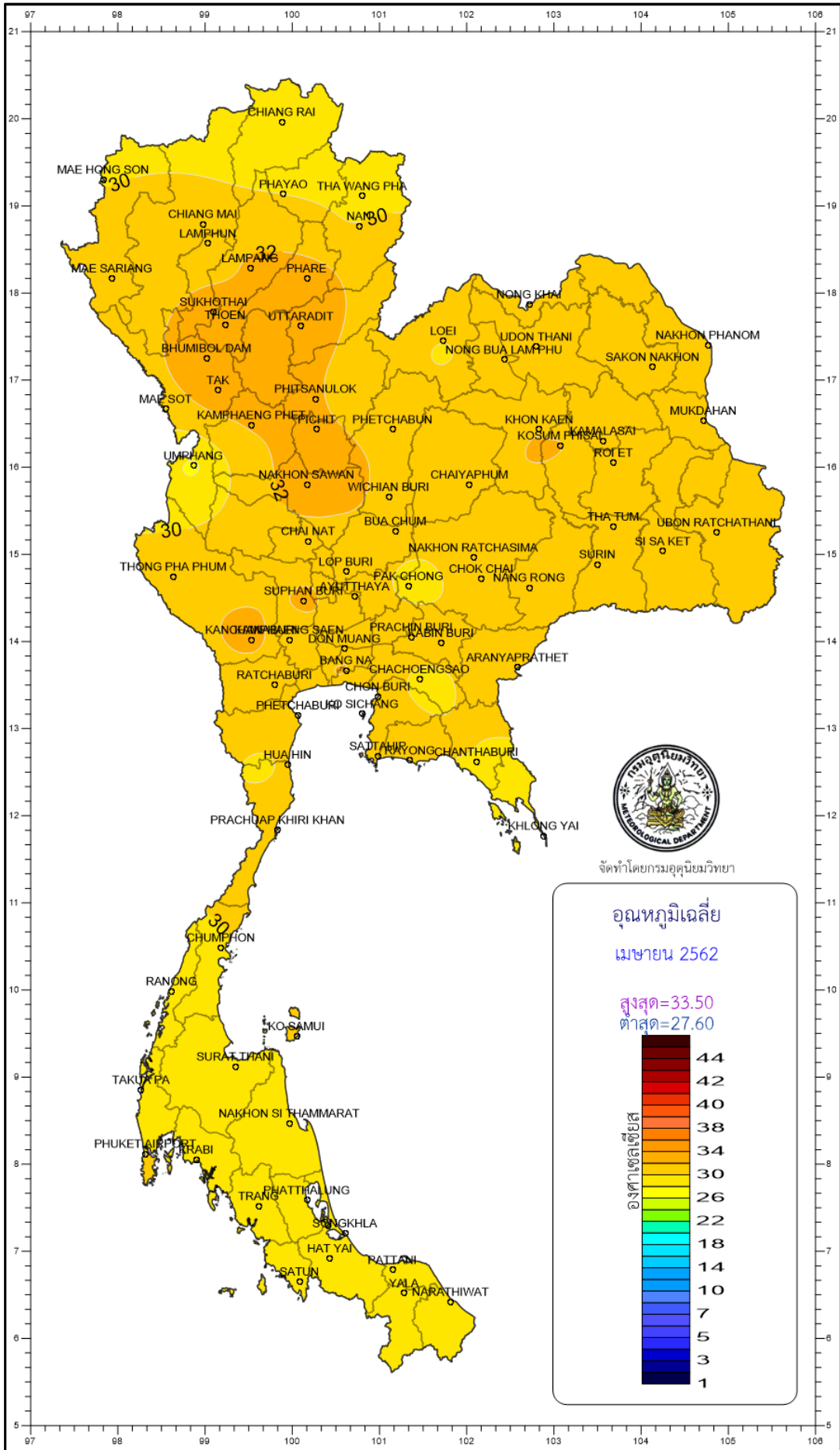
April 2019

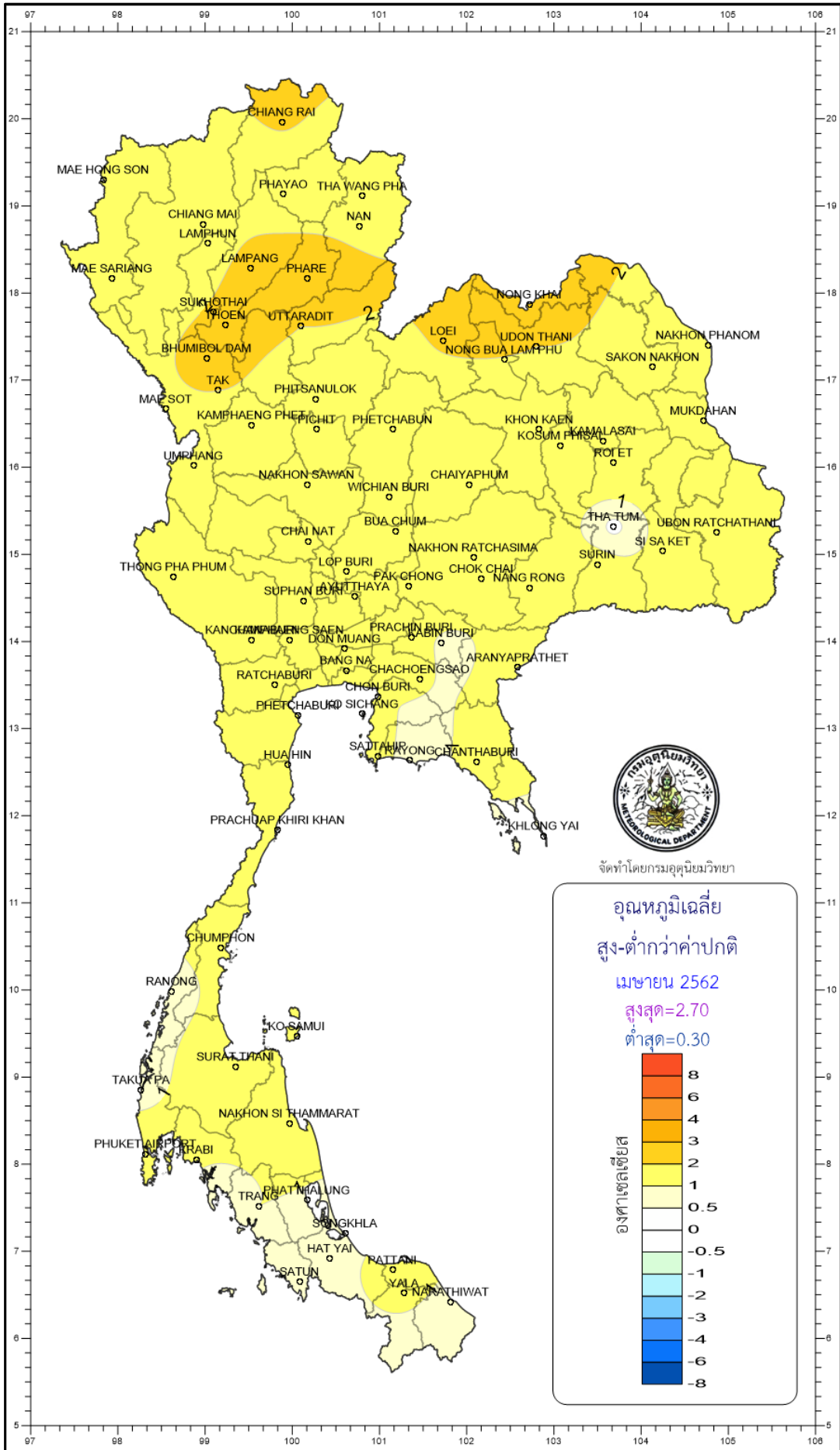
Region	Station	Temperature (°c)		Rainfall (mm)		Accumulative rainfall (mm) Since 1 January	
		Mean	Above or below normal	Actual	Above or below normal	Actual	Above or below normal
North	Chiang Rai	29.2	2.1	14.7	-83.2	79.8	-67.6
	Mae Hong Son	31.4	1.3	0.0	-63.2	55.4	-37.0
	Phayao	30.0	1.3	13.7	-75.5	72.3	-62.0
	Chiang Mai	31.2	1.9	22.3	-35.0	90.1	1.9
	Tha Wang Pha	30.0	1.7	47.5	-55.0	85.8	-66.2
	Nan	30.8	1.8	65.6	-34.0	162.0	13.4
	Lamphun	31.2	1.1	13.5	-31.0	52.1	-13.2
	Lampang	32.6	2.6	8.7	-57.2	45.5	-54.8
	Mae Sariang	30.6	1.3	0.0	-44.7	46.7	-20.2
	Phrae	32.7	2.7	64.5	-17.6	107.9	-16.4
	Uttaradit	32.8	2.0	0.6	-70.4	11.6	-102.8
	Bhumibol Dam	33.2	2.3	3.0	-63.1	15.7	-81.0
	Tak	33.5	2.0	47.8	-9.8	63.9	-16.6
	Mae Sot	30.9	1.8	0.0	-44.8	80.3	10.1
	Umphang	27.6	1.5	35.0	-66.3	124.7	-40.4
	Phitsanulok	32.1	1.3	18.9	-36.8	139.3	39.5
	Lom Sak	30.6	1.4	12.3	-50.9	129.0	0.1
	Phetchabun	31.5	1.7	64.9	-11.1	154.7	9.1
Wichian Buri	31.7	1.3	96.4	6.5	139.2	-21.6	
Kamphaeng Phet	32.2	1.8	42.0	-10.8	76.0	-28.9	
Northeast	Nong Khai	31.7	2.2	36.6	-46.8	139.8	-9.0
	Loei	30.5	2.1	8.7	-94.0	38.1	-126.2
	Udon Thani	31.8	2.0	14.6	-59.5	87.2	-64.9
	Nakhon Phanom	30.8	1.8	117.8	16.7	182.4	-12.8
	Sakon Nakhon	30.9	1.8	64.0	-29.3	96.6	-88.2
	Mukdahan	31.6	2.0	27.3	-49.1	107.6	-28.7
	Khon Kaen	31.6	1.7	57.6	-32.0	116.4	-40.7
	Kosum Phisai	32.1	2.0	28.1	-60.9	61.9	-97.4
	Roi Et	31.6	1.8	112.4	36.5	149.8	9.9
	Chaiyaphum	31.9	1.9	66.9	-25.7	82.8	-79.9
	Ubon Ratchathani	31.9	1.9	91.4	4.6	110.9	-23.8
	Tha Tum	30.7	0.3	113.1	26.4	137.4	-14.7
	Surin	31.2	1.4	49.8	-43.5	83.9	-72.1
	Nakhon Ratchasima	31.7	1.7	21.2	-51.0	48.5	-85.1
Chok Chai	31.0	1.4	57.1	-24.2	60.1	-77.5	
Nang Rong	30.6	1.1	75.9	-5.7	80.6	-73.2	
Central	Nakhon Sawan	33.2	1.8	37.4	-26.3	79.4	-33.6
	Bua Chum	31.8	1.5	21.8	-59.6	63.0	-80.0
	Lop Buri	31.9	1.5	18.4	-63.1	20.9	-105.3
	Suphan Buri	32.2	1.8	50.5	1.4	51.3	-27.3
	Thong Pha Phum	31.5	1.7	11.0	-90.8	45.6	-124.4
	Kanchanaburi	32.4	1.4	13.6	-64.9	27.5	-101.5
	Bangkok Airport	31.9	1.5	95.8	7.3	98.6	-50.7
	Bangkok Metropolis	31.7	1.2	38.8	-52.6	49.1	-117.7
East	Prachin Buri	31.9	1.8	57.1	-60.9	81.6	-109.8
	Kabin Buri	30.6	0.8	57.7	-41.1	156.4	-27.8
	Aranyaprathet	31.4	1.3	39.0	-46.7	140.2	-30.9
	Chon Buri	31.2	1.0	79.5	5.4	148.7	2.9
	Ko Sichang	31.1	1.3	6.7	-70.6	29.5	-124.0
	Pattaya	30.5	1.2	88.5	24.5	170.9	23.7
	Sattahip	31.1	1.3	15.7	-63.2	119.0	-63.7
	Rayong	30.7	0.7	133.3	51.7	249.9	40.8
	Chanthaburi	29.9	1.2	103.5	-21.7	217.9	-34.3
	Khlung Yai	29.3	0.8	278.8	93.4	478.8	54.9
South (East Coast)	Phetchaburi	31.1	1.4	0.0	-36.9	16.6	-68.7
	Hua Hin	30.7	1.1	0.0	-46.4	28.6	-98.8
	Prachuap Khiri Khan	30.7	1.5	0.0	-55.5	140.4	-33.1
	Chumphon	29.9	1.2	10.3	-75.5	294.6	7.5
	Surat Thani	29.8	1.5	5.3	-68.1	115.8	-30.7
	Ko Samui	30.2	1.1	10.7	-72.4	275.7	-28.8
	Nakhon Si Thammarat	29.6	1.2	16.2	-90.8	454.7	44.4
	Songkhla	29.7	0.8	21.1	-54.0	233.1	-25.1
	Hat Yai Airport	28.9	0.9	96.8	-21.8	255.8	-16.1
	Pattani Airport	29.4	1.2	39.6	-35.0	313.7	106.8
	Narathiwat	29.2	0.9	19.9	-52.9	333.8	-11.7
South (West Coast)	Ranong	29.6	0.8	216.5	63.9	332.1	88.3
	Takua Pa	29.0	0.8	195.5	-14.5	367.0	-38.1
	Phuket	30.9	1.5	124.6	-18.3	188.8	-81.8
	Phuket Airport	30.0	1.4	78.2	-75.8	270.0	-47.7
	Ko Lanta	29.5	0.5	133.0	14.0	163.8	-50.6
	Trang Airport	29.3	1.0	208.2	68.5	369.6	93.2
	Satun	29.1	0.7	74.6	-131.4	219.6	-175.4
	Over the area	30.9	1.4	54.3	-34.4	137.8	-37.7
					-39%		-21%

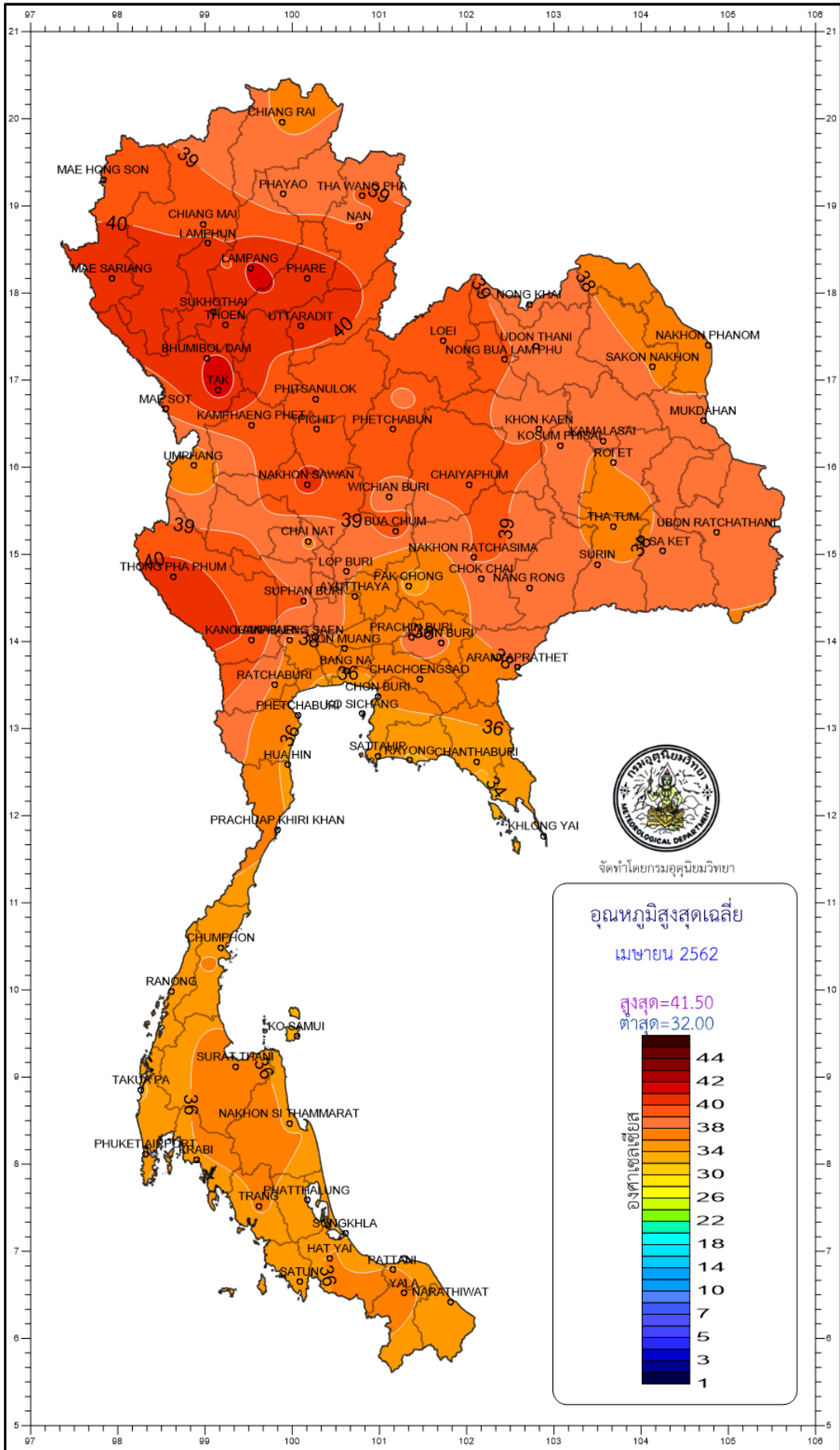
- NOTES :
- 1) Mean temperature is the average of daily dry-bulb temperature
 - 2) "T" is trace, rainfall amount less than 0.1 mm.
 - 3) "blank" is incomplete data.
 - 4) Temperature and rainfall are preliminary data.

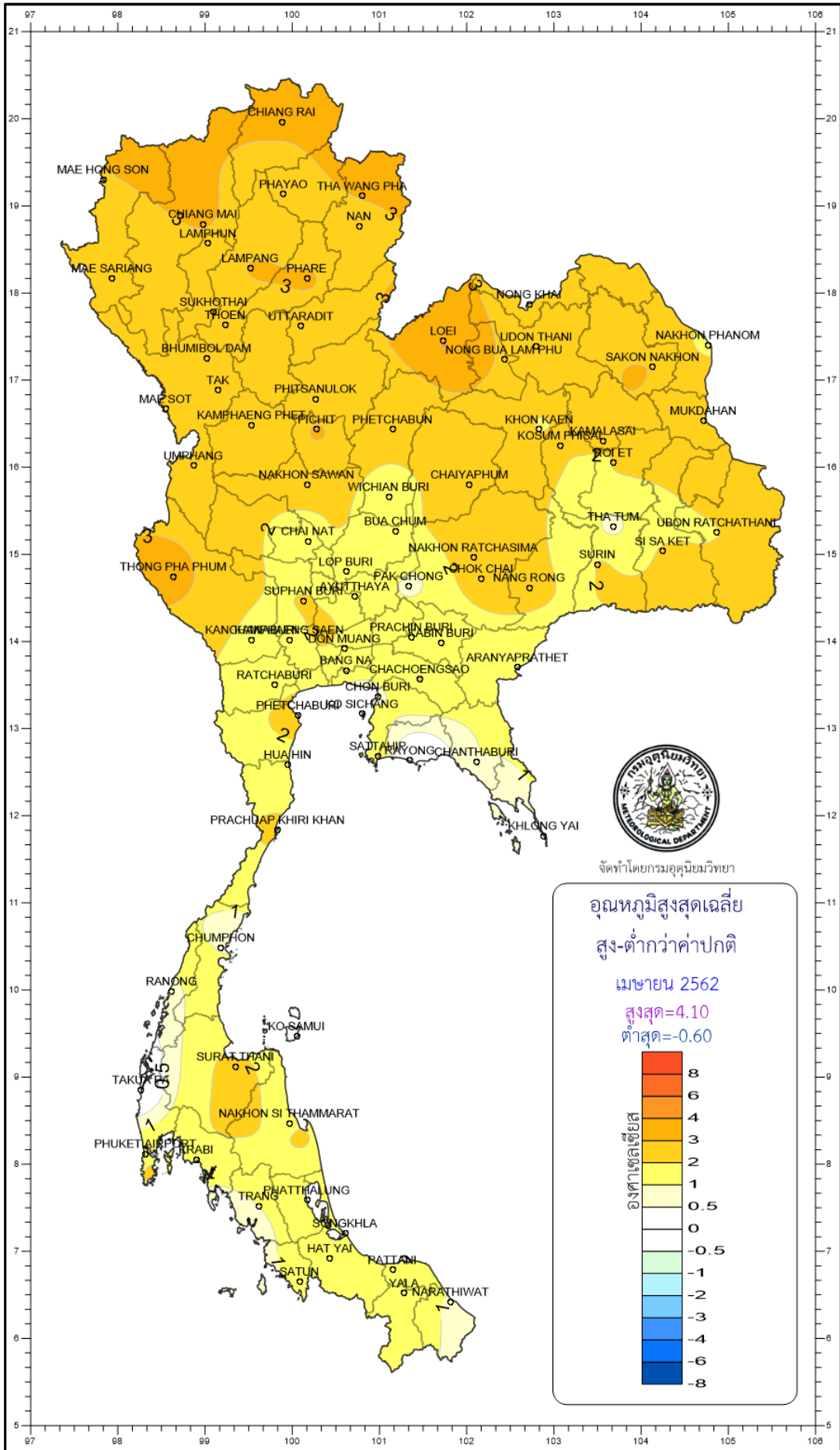












จัดทำโดยกรมอุตุนิยมวิทยา

