

Monthly Weather Summary in Thailand April 2013

Under the influence of the heat low pressure cell which covered upper Thailand associated with the southerly and southeasterly winds, Thailand experienced hot weather almost the month with very hot in several areas especially on April 4-6. Mean temperatures in all regions were well above normal. Moreover, the high pressure area from China occasionally extended its ridge to cover upper Thailand, bringing the periodical rain and thunderstorms to Thailand. However, most areas in upper Thailand received below normal rainfall i.e. northern part 37.7 mm (53%) northeastern part 29.6 mm (34%) and central part 21.6 mm (27%) while it was above normal at eastern part 8.7 mm (9%), southern part (east coast) 69.6 mm (92%) and southern part (west coast) 70.2 mm (44%)

1 – 10 April: During this period, generally hot to very hot weather persisted in several areas. In addition with affected by the heat low pressure cell cover upper Thailand during April 4-6, it became very hot weather nearly the whole areas in northeastern part. The highest temperature of 42.6 °C was measured at Tha Pra Agromet Stn. in Khon Kaen province and Amphoe Muang in Nong Bua Lamphu province on April 6. Besides, due to the high pressure area from China extended its ridge to cover northeastern and eastern parts, it brought isolated rain with isolated heavy rainfall to the northeastern and eastern parts mainly during early period. The maximum daily rainfall of 68.0 mm was recorded in upper Thailand at Amphoe Khlong Hat in Sa Kaew province on April 1. Thunderstorms and gusty winds were reported at Loei, Chaiyaphum, Sisaket, Nong Bua Lumphu, Amnat Charoen and Surin provinces. In southern Thailand, isolated to widely scattered rain occurred from Surat Thani province southward almost the period with heavy rainfall in some areas. The highest daily rainfall of 62.9 mm was measured at Amphoe Muang in Yala province on April 9.

11 – 20 April: The moderate high pressure area from China extended its ridge to covered northeastern part of Thailand and the South China Sea during early period. In addition, the heat low pressure cell covered upper Thailand on the last day of the period, leading to hot weather almost the whole areas especially on April 19-20 when very hot weather remained in several areas. The highest temperature was 41.8 °C at Amphoe Muang in Tak province on April 20. The maximum daily rainfall of 112.0 mm was recorded in upper Thailand at Amphoe Lue Amnat in Amnat Charoen province on April 17. Thunderstorms and gusty winds occurred at Chiang Rai, Tak, Lampang, Surin, Maharakam, Amnat Charoen, Chon Buri, Sing Buri and Chanthaburi provinces. Moreover, affected by the low pressure cell over the upper Malaca Strait during the first half of the period, southern Thailand received scattered to fairly widespread rain with heavy to very heavy rainfall in some areas mainly along east coast during early and middle period. The highest daily rainfall of 218.4 mm was measured at Amphoe Muang in Nakhon Si Thammarat province on April 13.

21 – 30 April: Southeasterly wind prevailed over the northeastern, central and eastern parts throughout the period. In addition, the westerly trough moved through the northern part during the first half of the period and the low pressure cell covered the Andaman Sea during April 26-27. The weather was generally hot in upper Thailand with very hot mainly in northern part. The highest temperature was of 41.4 °C at Amphoe Muang in Nan province on April 28. For rainfall, northern and northeastern parts experienced scattered to fairly widespread rain with heavy to very heavy rainfall in some areas during the first half of the period then isolated rain and heavy to very heavy rainfall. Central and eastern parts received isolated to widely scattered rain with heavy rainfall in some areas. The maximum daily rainfall of 120.0 mm was recorded in upper Thailand at Amphoe Muang in Sakon Nakhon province on April 27. Thunderstorms with gusty wind occurred at Phitsanulok, Uthai Thani, Sakon Nakhon, Amnat Charoen, Kalasin, Nakon Sawan, Sing Buri, Ratcha Buri, and Prachin Buri provinces. In Southern part isolated rain during early period and then widely scattered to scattered rain with isolated heavy rainfall. The highest daily rainfall of 73.5 mm was measured at Amphoe Ko Lanta in Krabi province on April 29.

Note : Rainfall, temperatures and natural disasters in this report were updated up to May 14, 2013.

Monthly Current Report
Rainfall and Accumulative Rainfall
April 2013

Northern Thailand

Station	Temperature (°c)		Rainfall (mm)		Accumulative rainfall (mm) Since 1 January	
	Mean	Above or below normal	Actual	Above or below normal	Actual	Above or below normal
Chiang Rai	28.5	1.4	2.2	-95.7	93.5	-53.9
Mae Hong Son	31.4	1.3	16.6	-46.6	61.2	-31.2
Phayao	29.6	0.9	10.6	-78.6	74.3	-60.0
Chiang Mai	31.2	1.9	1.2	-56.1	74.9	-13.3
Tha Wang Pha	30.0	1.7	16.2	-86.3	101.4	-50.6
Nan	30.8	1.8	13.9	-85.7	70.6	-78.0
Lamphun	31.0	0.9	46.2	1.7	68.3	3.0
Lampang	30.9	0.9	67.3	1.4	123.8	23.5
Mae Sariang	31.0	1.7	1.5	-43.2	24.4	-42.5
Phrae	30.3	0.3	119.1	37.0	235.0	110.7
Uttaradit	31.3	0.5	134.9	63.9	146.8	32.4
Bhumibol Dam	32.2	1.3	11.9	-54.2	44.7	-52.0
Tak	32.5	1.0	1.1	-56.5	93.2	12.7
Mae Sot	29.6	0.5	16.9	-27.9	28.7	-41.5
Umphang	26.2	0.1	56.3	-45.0	251.9	86.8
Phitsanulok	31.5	0.7	1.2	-54.5	60.7	-39.1
Lom Sak	30.4	1.2	20.7	-42.5	63.7	-65.2
Phetchabun	31.2	1.4	36.6	-39.4	135.8	-9.8
Wichian Buri	31.0	0.6	78.6	-11.3	256.9	96.0
Kamphaeng Phet	31.3	0.9	19.3	-33.5	52.1	-52.8
Over the area	30.6	1.1	33.6	-37.7 -53%	103.1	-11.3 -10%

Northeastern Thailand

Station	Temperature (°c)		Rainfall (mm)		Accumulative rainfall (mm) Since 1 January	
	Mean	Above or below normal	Actual	Above or below normal	Actual	Above or below normal
Nong Khai	30.5	1.0	43.7	-39.7	113.1	-35.7
Loei	29.8	1.4	109.6	6.9	126.6	-37.7
Udon Thani	30.8	1.0	8.2	-65.9	38.6	-113.5
Nakhon Phanom	29.1	0.1	79.5	-21.6	166.9	-28.3
Sakon Nakhon	29.6	0.5	85.5	-7.8	109.1	-75.7
Mukdahan	29.6	0.0	88.2	11.8	201.7	65.4
Khon Kaen	30.6	0.7	7.3	-82.3	68.4	-88.7
Kosum Phisai	30.9	0.8	26.3	-62.7	55.5	-103.8
Roi Et	30.5	0.7	12.2	-63.7	63.1	-76.8
Chaiyaphum	30.9	0.9	16.7	-75.9	89.7	-73.0
Ubon Ratchathani	29.9	-0.1	45.2	-41.6	83.1	-51.6
Tha Tum	30.9	0.5	113.1	26.4	126.4	-25.7
Surin	30.5	0.7	30.6	-62.7	54.1	-101.9
Nakhon Ratchasima	30.6	0.6	19.7	-52.5	57.4	-76.2
Chok Chai	30.2	0.6	117.6	36.3	157.1	19.5
Nang Rong	30.0	0.5	104.2	22.6	118.5	-35.3
Over the area	30.3	0.6	56.7	-29.6 -34%	101.8	-52.5 -34%

- NOTES :
- 1) Mean temperature is the average of daily dry-bulb temperature
 - 2) "T" is trace, rainfall amount less than 0.1 mm.
 - 3) "blank" is incomplete data.
 - 4) Temperature and rainfall are preliminary data.

Monthly Current Report
Rainfall and Accumulative Rainfall
April 2013

Central Thailand

Station	Temperature (°c)		Rainfall (mm)		Accumulative rainfall (mm) Since 1 January	
	Mean	Above or below normal	Actual	Above or below normal	Actual	Above or below normal
Nakhon Sawan	31.8	0.4	63.2	-0.5	138.2	25.2
Bua Chum	30.4	0.1	173.5	91.1	249.2	105.2
Lop Buri	30.9	0.5	27.0	-54.5	64.9	-61.2
Suphan Buri	31.0	0.6	3.0	-46.1	4.2	-74.4
Thong Pha Phum	30.0	0.2	78.8	-23.0	169.7	-0.3
Kanchanaburi	31.7	0.7	11.5	-67.0	13.5	-115.5
Bangkok Airport	31.3	0.9	17.3	-71.2	145.5	-3.8
Bangkok Metropolis	31.0	0.5	89.9	-1.5	176.5	9.7
Over the area	31.0	0.5	58.0	-21.6 -27%	120.2	-14.4 -11%

Eastern Thailand

Station	Temperature (°c)		Rainfall (mm)		Accumulative rainfall (mm) Since 1 January	
	Mean	Above or below normal	Actual	Above or below normal	Actual	Above or below normal
Prachin Buri	30.7	0.6	42.2	-75.8	67.9	-123.5
Kabin Buri	29.3	-0.5	98.3	-0.5	130.5	-54.7
Aranyaprathet	30.3	0.2	142.2	56.5	169.0	-2.1
Chon Buri	30.4	0.2	151.9	77.8	248.3	99.8
Ko Sichang	29.8	0.0	35.9	-41.4	212.2	58.7
Pattaya	29.4	0.1	59.2	-4.8	108.6	-41.6
Sattahip	29.6	-0.2	63.0	-15.9	271.3	88.6
Rayong	29.8	-0.2	96.9	15.3	254.6	45.5
Chanthaburi	29.2	0.5	223.8	98.6	395.5	143.3
Khlong Yai	28.9	0.4	162.2	-23.2	423.7	-0.2
Over the area	29.7	0.1	107.6	8.7 9%	228.2	21.3 10%

- NOTES :
- 1) Mean temperature is the average of daily dry-bulb temperature
 - 2) "T" is trace, rainfall amount less than 0.1 mm.
 - 3) "blank" is incomplete data.
 - 4) Temperature and rainfall are preliminary data.

Monthly Current Report
Rainfall and Accumulative Rainfall
April 2013

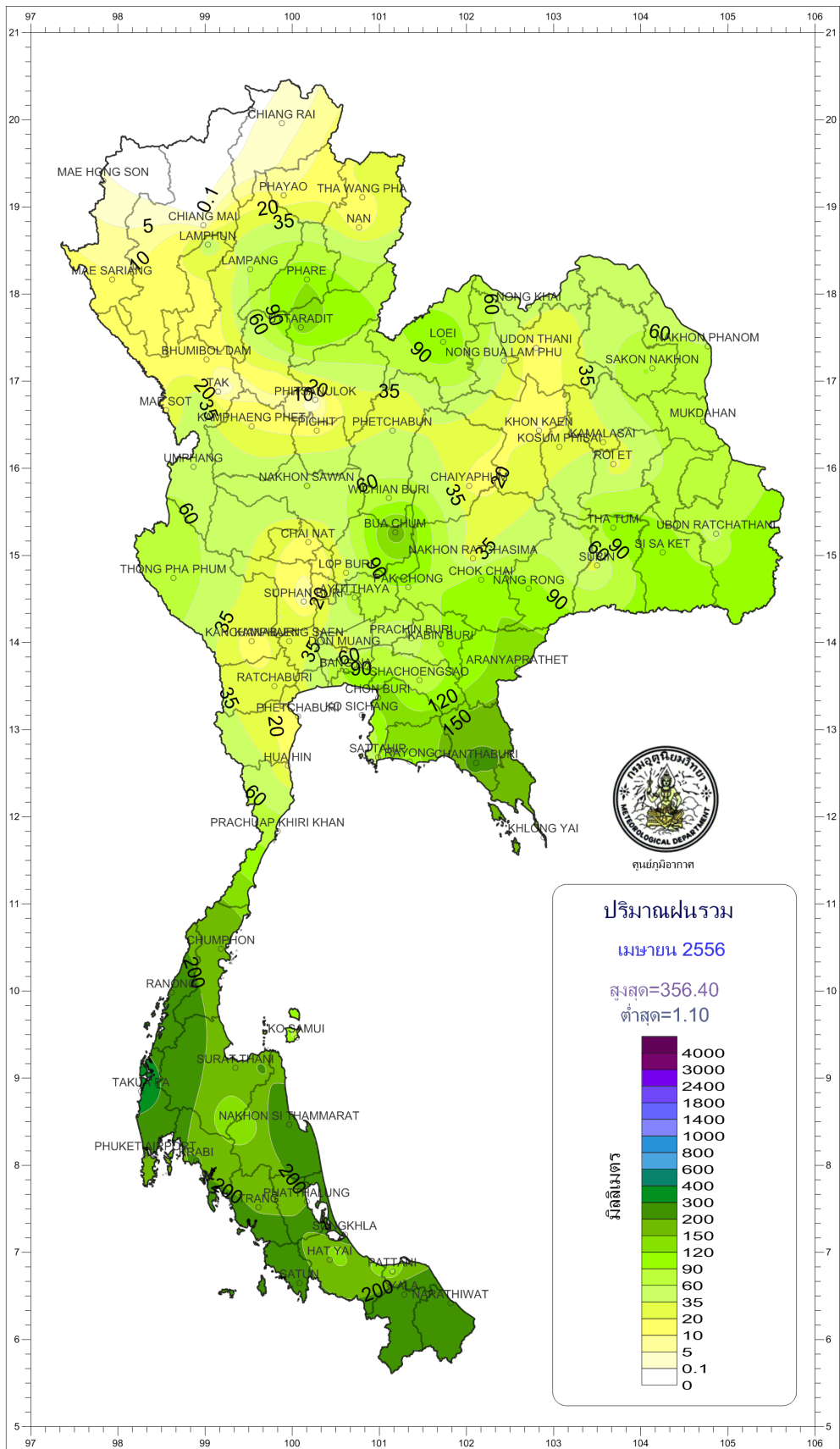
Southern Thailand, east coast

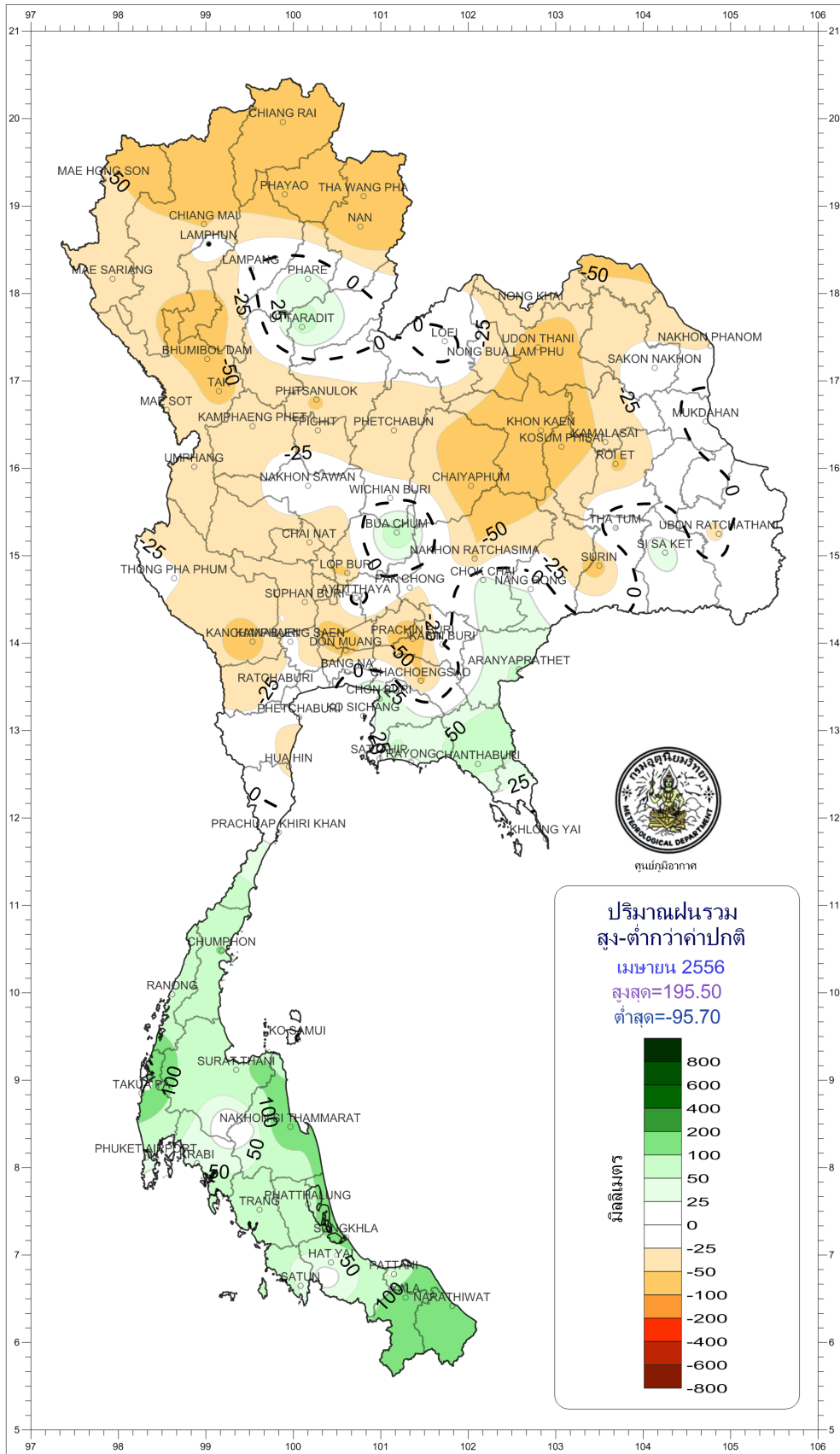
Station	Temperature (°c)		Rainfall (mm)		Accumulative rainfall (mm) Since 1 January	
	Mean	Above or below normal	Actual	Above or below normal	Actual	Above or below normal
Phetchaburi	30.1	0.4	13.7	-23.2	47.9	-37.4
Hua Hin	29.8	0.2	14.7	-31.7	66.1	-61.3
Prachuap Khiri Khan	29.5	0.3	73.3	17.8	209.7	36.2
Chumphon	29.0	0.3	189.3	103.5	442.2	155.1
Surat Thani	28.7	0.4	155.6	82.2	252.9	106.4
Ko Samui	29.1	0.0	79.3	-3.8	229.2	-75.3
Nakhon Si Thammarat	28.4	0.0	290.0	183.0	540.6	130.3
Songkhla	28.8	-0.1	270.6	195.5	464.8	206.6
Hat Yai Airport	28.0	0.0	160.0	41.4	395.6	123.7
Pattani Airport	28.5	0.3	114.7	40.1	361.1	154.2
Narathiwat	28.4	0.1	233.8	161.0	735.6	390.1
Over the area	28.9	0.1	145.0	69.6 92%	340.5	102.5 43%

Southern Thailand, west coast

Station	Temperature (°c)		Rainfall (mm)		Accumulative rainfall (mm) Since 1 January	
	Mean	Above or below normal	Actual	Above or below normal	Actual	Above or below normal
Ranong	28.5	-0.3	230.3	77.7	253.2	9.4
Takua Pa	28.0	-0.2	356.4	146.4	603.1	198.0
Phuket	29.5	0.1	151.6	8.7	271.9	1.3
Phuket Airport	28.9	0.3	205.5	51.5	268.8	-48.9
Ko Lanta	28.9	-0.1	219.8	100.8	329.1	112.8
Trang Airport	28.5	0.2	196.4	56.7	355.7	79.3
Satun	28.4	0.0	255.4	49.4	433.2	38.2
Over the area	28.7	0.0	230.8	70.2 44%	359.3	55.7 18%

- NOTES :
- 1) Mean temperature is the average of daily dry-bulb temperature
 - 2) "T" is trace, rainfall amount less than 0.1 mm.
 - 3) "blank" is incomplete data.
 - 4) Temperature and rainfall are preliminary data.





ศูนย์ภูมิอากาศ

