

Annual Weather Summary of Thailand in 2011

2011 was the wettest year for Thailand in the 61- years (1951-2011) record. This resulted mainly from widespread rain in Thailand especially during summer and rainy seasons. The annual rainfall was about 24 % above normal and 19 % higher than the previous year. Consequently, Thailand experienced severe floods in several provinces in southern part during March followed by the period July to early December was particularly seriously affected the lower northern and central parts. The enormous damages from the floods affected all sectors of the country. Despite monthly mean air temperatures slightly above normal almost the whole year, the annual temperature averaged of 26.8 °C was 0.2 °C below normal. Summer was remarkable for the unusual cool weather, Thailand experienced a spell of very low temperature which affected in most areas with breaking records of daily minimum temperatures in several areas. Moreover there were 5 tropical cyclones having some effects on rainfall of Thailand, with only one namely the tropical storm NOCK-TEN (1108) hit Thailand on July 31. More details on the weather are as follow:

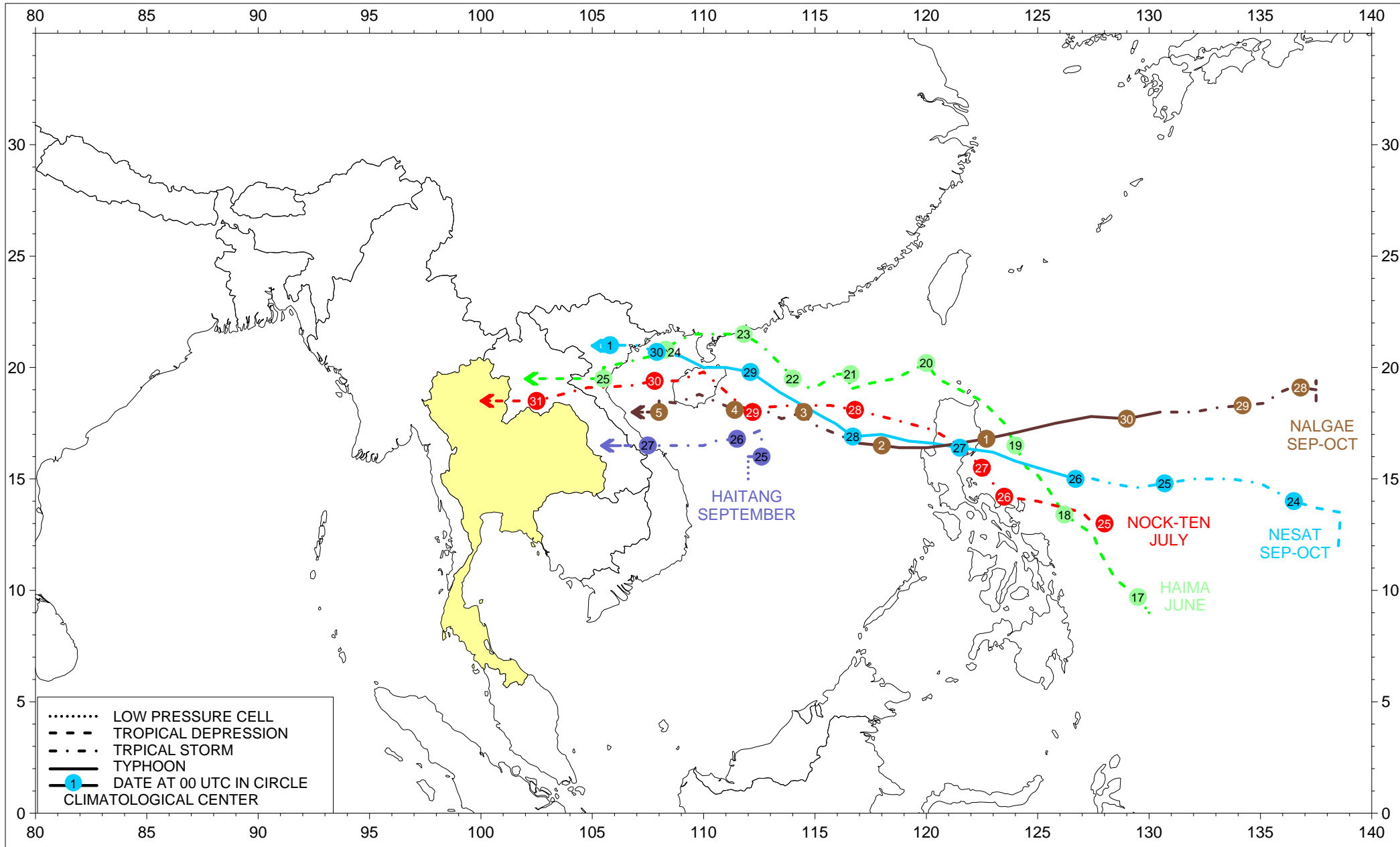
In January, the weather was generally cool and cold in upper Thailand with cold and very cold in the mountainous areas and mountain top caused by the surge of rather active high pressure area from China. Unseasonable rainfall occurred during the passage of the westerly trough over the upper Thailand. Conditions were also cool in the upper southern Thailand and abundant rainfall occurred across the southern part throughout the month. Mean air temperatures in January were considered to be normal while there was 1.5 °C and 0.5 °C below normal in northeastern and central part respectively. The extreme minimum air temperature of the year, 8.5 °C, occurred in the northeastern part at Nakhon Phanom Agrometeorological station in Nakhon Phanom province on January 13 while it was 2.5 °C in mountainous area at Phluang Wildlife Sanctuary in Loei province on January 18.

Summer in Thailand began normally around mid February. Summer months were exceptionally cool especially in March, when the high pressure area from China occasionally extended its ridge to cover upper Thailand. Temperature sharply dropped mainly in northern and northeastern parts. The combination influence of the westerly trough, the prevailing of easterly wind and the low pressure cell dominating over the middle southern part produced significant rain over southern part led to widely severe floods and mudslide in much of southern Thailand. Moreover, torrential rain triggered massive flooding seriously destroyed homes and croplands. Summer rainfalls were above normal with 369 % above normal in March. In April, hot weather occurred in several areas and very hot in some areas of northeastern part. The extreme maximum air temperature of the year was 40.7 °C at Amphoe Satuek in Buriram province on April 18. However, mean air temperature of March and April were below normal in general with the new lowest record of minimum temperature in some stations.

The rainy season started approximately one week earlier than normal on May 6 and prolonged till mid October. Under the influence of monsoon trough which lay across upper Thailand and southwest monsoon, mean monthly rainfalls were above normal throughout the season in most places. In addition, tropical storm "HAIMA (1104)" in the upper South China Sea made landfall over upper Vietnam on June 24. After making landfall, it downgraded to the tropical depression and passed through Lao before weakening to the

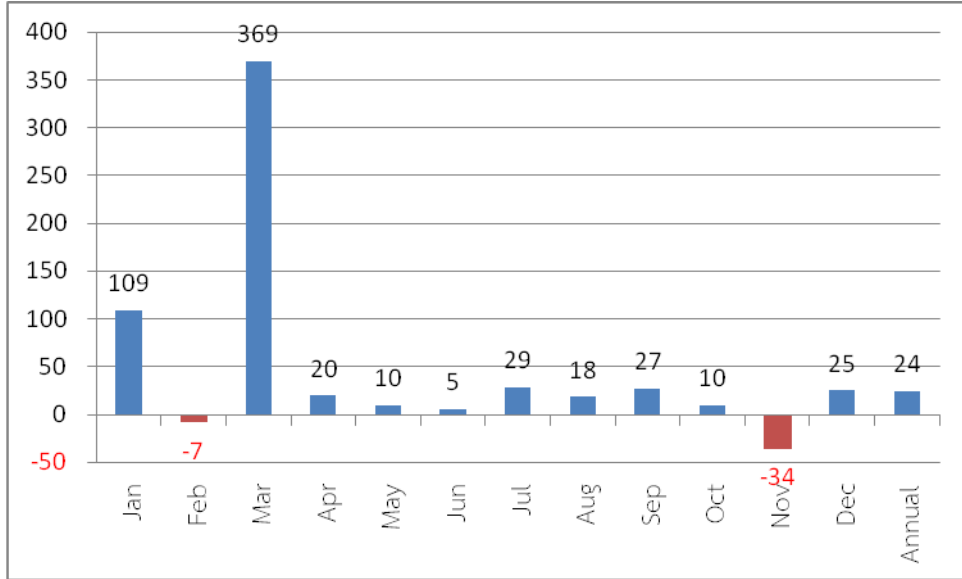
active low pressure cell and moved further to cover Nan province in northern part of Thailand on June 26. As HAIMA neared upper Thailand, the southwest monsoon became more strength which resulted in plentiful of rainfall in many areas, producing massive floods that seriously destroyed homes and croplands mainly in northern part during June 25 and 26. Furthermore, the tropical storm "NOCK-TEN" in the middle South China Sea made landfall over upper Vietnam during late July. It moved into Laos and downgraded to tropical depression before heading to Nan province in Thailand on July 31. It later weakened to the low pressure cell for the next time. Stormy conditions caused scattered to fairly widespread rain almost the whole period particularly in the northern and northeastern parts where heavy to very heavy rainfall was observed in several areas during the end of the period. The maximum daily rainfall of 405.9 mm was reported in upper Thailand at Amphoe Muang in Nong Khai province on July 30 and was the highest for the station in 61 years. Flash floods occurred at Mae Hong Son, Nan, Phrae, Uttaradit, Phitsanulok Phicit, Nong Khai, Loei Udon Thani, Sakon Nakhon, and Nakhon Phanom provinces on July 31. Afterward, abundant rainfall prolonged especially in northern and northeastern parts nearly the whole August. During late September till early October the strength of southwest monsoon, monsoon trough lying across upper Thailand, the remnants of tropical storm "HAITANG(1118)", typhoon "NESAT(1117)" and "NALGAE(1119)", associated with high tide during the second half of October resulted in abundant rainfall with widely major flooding across upper Thailand mainly in lower northern and central parts at Phitsanulok, Sukhothai, Phichit, Nakhon Sawan, Lop Buri, Uthai thani, Ayutthaya, Sing Buri, Ang Thong, Sara Buri, Nakhon Nayok, Prachin Buri, Pathum Thani, Nonthaburi and Nakhon Pathom provinces. Extensive flooding in some areas continued the period October to early December.

Moreover high pressure area from China which extended its ridge to cover upper Thailand accompanied with the prevailing of the northeast monsoon during the second half of October brought cool to upper portion of northern and northeastern parts. Then rainfalls and temperatures in upper Thailand were clearly decreasing with generally cool and cold weather in some areas, especially during the second half of December. Extreme minimum temperature was 9.0 °C at Agrometeorological Station in Sakon Nakhon province on December 25 and Agrometeorological Station in Nakhon Phanom province on December 27. The temperature dropped to 1.5 °C at Doi Angkhang, Amphoe Fang in Chiang Mai province on December 21. However mean temperatures in November and December were above normal in all regions. In southern part, cool weather in several areas of the upper portion. As the active northeast monsoon and the low pressure cell in the lower South China Sea moved to cover Malaysia and the lower southern Thailand during late December, several places mainly in east coast experienced plentiful of rainfall with heavy and very heavy rainfall. The maximum daily rainfall was 325.3 mm at Ru So in Narathiwat province on December 31. Strong wind wave occurred at Prachuap Khiri Khan, Chumphon, Surat Thani and Nahkon Si Thammarat provinces on December 25. Floods were also reported at Prachuap Khiri Khan province on December 25 and Narathiwat province on December 31. ❀



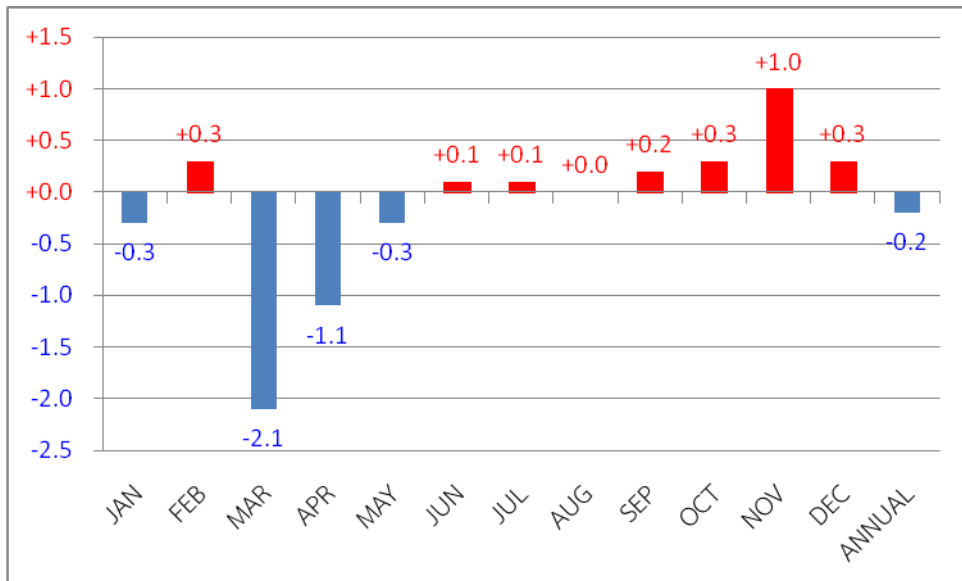
Track of Tropical cyclone affecting Thailand in 2011

Monthly and Annual rainfall anomalies (%) in 2011



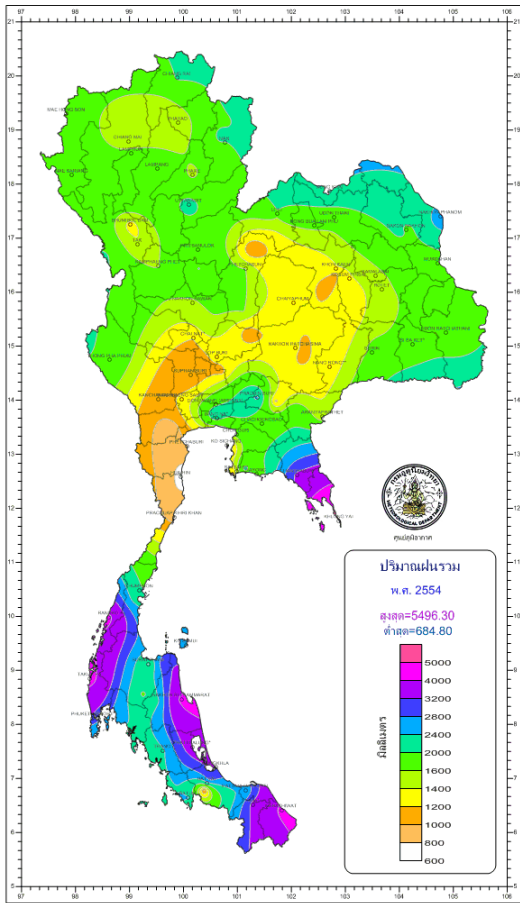
■ Above normal ■ Below normal

Monthly and Annual Mean Temperature anomalies (°C) in 2011

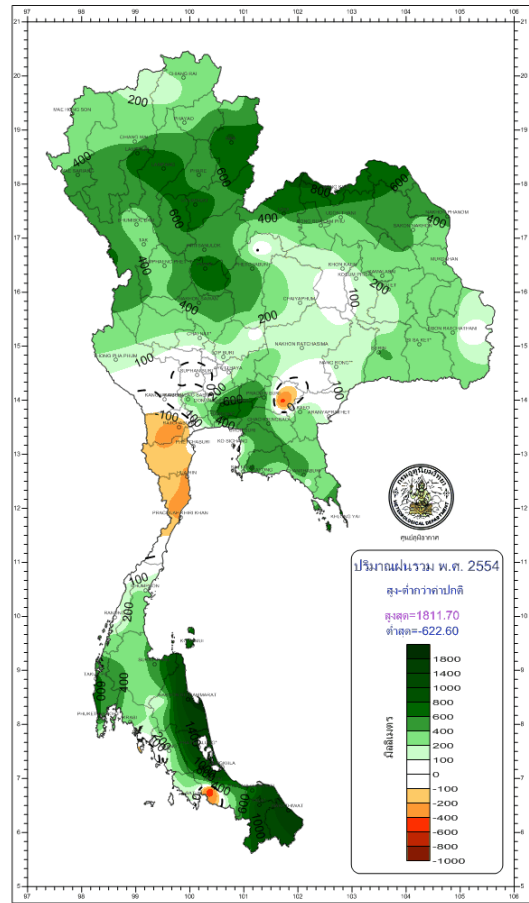


■ Above normal ■ Below normal

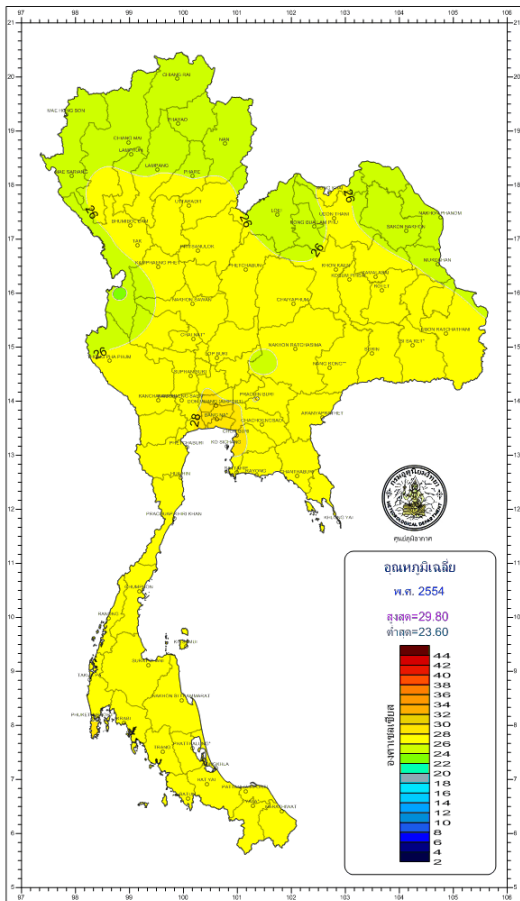
Remark: Based on 1971-2000 normal.



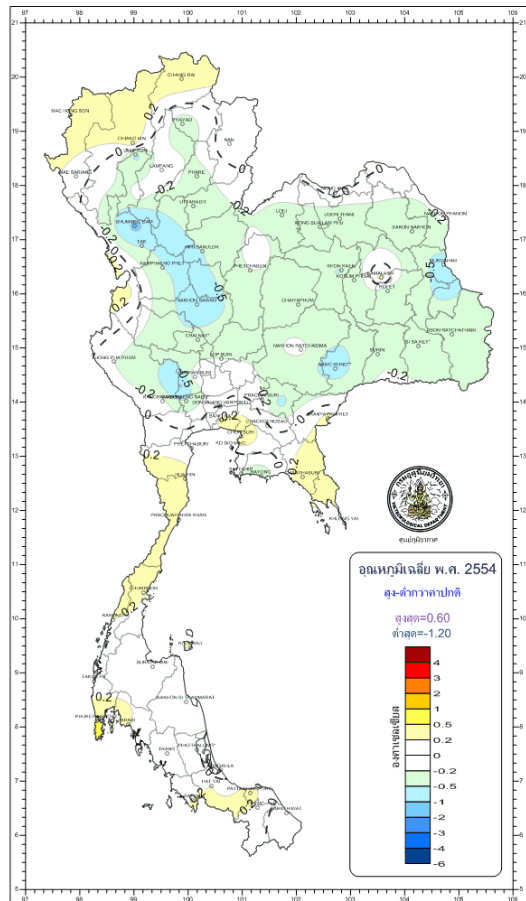
Annual Rainfall (mm.) in 2011



Annual Rainfall anomalies (mm.) in 2011



Annual Mean Temperature (°C) in 2011



Annual Mean Temperature anomalies (°C) in 2011

Monthly and Annual rainfall of Thailand in 2011

Part	JAN	FEB	MAR	APR	MAY	JUN	JUL	AUG	SEP	OCT	NOV	DEC	ANNUAL
NORTH													
Rainfall amount (mm.)	5.3	6.8	106.7	120.0	245.0	216.3	256.9	274.9	309.8	133.0	13.4	0.6	1688.7
Departure from normal (mm.)	-0.6	-4.6	82.1	51.7	71.6	64.8	77.1	49.6	97.5	9.9	-20.7	-7.5	470.9
Departure from normal (%)	-10	-40	334	76	41	43	43	22	46	8	-61	-93	39
NORTHEAST													
Rainfall amount (mm.)	0.2	15.1	23.1	79.0	201.1	187.2	319.8	324.8	352.2	182.5	5.8	0.1	1690.9
Departure from normal (mm.)	-3.9	-2.6	-14.6	-7.1	18.8	-22.7	111.9	66.0	110.3	71.2	-12.1	-3.4	311.8
Departure from normal (%)	-95	-15	-39	-8	10	-11	54	26	46	64	-68	-97	23
CENTRAL													
Rainfall amount (mm.)	1.4	21.5	123.8	112.9	222.6	165.9	214.9	211.8	256.9	177.0	4.9	0.8	1514.4
Departure from normal (mm.)	-4.8	9.1	93.2	38.3	62.7	27.3	62.4	27.9	-4.1	-3.7	-31.9	-4.6	271.8
Departure from normal (%)	-77	73	305	51	39	20	41	15	-2	-2	-87	-85	22
EAST													
Rainfall amount (mm.)	0.0	47.4	116.2	136.3	169.4	277.5	258.4	333.5	465.9	272.9	13.6	3.4	2094.5
Departure from normal (mm.)	-14.7	18.4	61.6	40.0	-42.0	5.3	-7.5	22.0	132.7	44.5	-47.7	-4.2	208.4
Departure from normal (%)	-100	63	113	42	-20	2	-3	7	40	20	-78	-55	11
SOUTH (EAST COAST)													
Rainfall amount (mm.)	176.8	20.7	557.0	63.9	124.8	121.4	141.4	157.6	122.3	241.3	277.7	312.6	2317.5
Departure from normal (mm.)	116.8	-15.3	506.6	-9.1	-12.7	12.3	28.0	29.4	-21.3	-11.0	-100.0	83.6	607.3
Departure from normal (%)	195	-43	1005	-13	-9	11	25	23	-15	-4	-27	37	36
SOUTH (WEST COAST)													
Rainfall amount (mm.)	63.7	20.1	424.2	118.0	267.1	231.7	361.9	461.3	446.9	308.0	176.5	84.7	2964.1
Departure from normal (mm.)	40.8	-8.6	353.7	-43.0	-47.9	-88.5	9.5	57.2	6.7	-49.7	-26.2	19.4	223.4
Departure from normal (%)	178	-30	502	-27	-15	-28	3	14	2	-14	-13	30	8
OVER COUNTRY													
Rainfall amount (mm.)	34.9	19.3	191.0	103.6	206.1	199.7	259.0	287.3	319.7	201.9	67.9	57.5	1947.9
Departure from normal (mm.)	18.2	-1.5	150.3	17.0	18.6	10.0	57.4	44.6	67.0	17.9	-35.6	11.5	375.4
Departure from normal (%)	109	-7	369	20	10	5	29	18	27	10	-34	25	24

Remark : Based on 1971 - 2000 normal

Climatological Center

Meteorological Development Bureau

Breaking records of daily rainfall in Thailand

Station	New Record 2011		Previous Record		Start since
	Rainfall (mm.)	Date	Rainfall (mm.)	Date / Year	
<u>January</u>					
Surat Thani (Agromet Stn.)	106.2	7	102.6	19/2001	1993
<u>February</u>					
Maharakham(Kosumphisai)	37.2	20	34.2	22/1985	1966
Ayutthaya (Agromet.Stn.)	17.2	23	10.4	6/1994	1993
Chonburi (Phatthaya)	51.4	15	33.3	9/1988	1980
Chonburi (Lam Chabang)	35.7	15	32.4	7/2004	1992
Surat Thani (Pra Saeng)	79.2	7	49.1	25/2008	1998
<u>March</u>					
Sukhothai	49.5	17	13.0	22/2007	2000
Tak (Mae Sot)	84.0	17	48.0	19/2005	1951
Tak (Doi Mu Soe Agromet Stn.)	52.8	17	46.5	8/2001	1992
Bangkok (Don Muang Airport)	90.5	22	77.0	30/2006	1951
Surat Thani	241.5	29	67.2	21/1994	1988
Surat Thani (Agromet Stn.)	275.1	25	96.0	26/2000	1993
Surat Thani (Ko Samui)	414.7	28	163.8	11/2001	1969
Nakhon Si Thammarat	290.4	25	119.8	25/2005	1952
Nakhon Si Thammarat (Agromet Stn.)	215.0	25	133.7	27/2000	1984
Phatthalung (Agromet Stn.)	199.1	24	108.4	1/2000	1981
Songkhla(Kho Hong Agromet Stn.)	106.8	28	94.8	20/1999	1969
Narathiwat	395.9	28	154.2	25/1973	1956
Phang-nga (Takua Pa)	105.2	29	85.2	31/2010	1981
Phuket Airport	185.4	29	184.7	25/2003	1952
Krabi	161.4	29	62.2	21/2009	1994
Trang	121.1	28	101.3	25/1966	1951
<u>April</u>					
Sukhothai	107.1	30	67.3	28/2008	2000
Buriram	40.5	18	36.4	14/2007	2003
Chonburi (Lam Chabang)	78.4	24	61.6	15/1994	1992
<u>May</u>					
Lampang	191.2	9	89.0	20/1970	1951
Buriram	92.7	16	69.9	10/2010	2003
Nakhon Sawan (Takfa Agromet.)	102.7	25	101.0	4/1986	1969
Chachoengsao (Agromet Stn.)	90.1	25	68.1	22/1993	1989
<u>June</u>					
Phayao	93.6	25	82.0	27/1983	1981
Tak(Mae Sot)	110.1	25	98.5	22/2004	1951
Nan(Thung Chang Agromet Stn.)	153.4	25	82.3	10/2002	1996
Bangkok (Bangkok port)	152.2	30	96.7	28/1998	1994
<u>July</u>					
Nongkhai	405.9	30	151.0	11/1969	1951
Nakhon Ratchasima	116.3	28	104.1	10/1975	1951
Bangkok(Don Muang Airport)	100.9	11	99.4	5/1995	1951
Pattani	87.8	2	86.2	22/2007	1964

Breaking records of daily rainfall in Thailand(Cont.)

Station	New Record 2011		Previous Record		Start since
	Rainfall (mm.)	Date	Rainfall (mm.)	Date / Year	
August					
Mae Hong Son (Mae Sariang)	135.5	2	106.1	14/1988	1956
Nakhonsawan	124.9	15	103.6	3/2003	1951
Nakhonpathom(Kamphengsaen)	90.3	15	75.9	6/1998	1973
Sa Kaew	98.6	24	89.4	17/2003	2000
Phang-nga (Takua Pa)	205.4	25	193.5	23/1995	1981
Phuket Airport	211.9	25	185.4	25/1954	1951
September					
Sukhothai	114.8	12	99.7	19/2008	2000
Uttaradit	141.6	4	138.8	21/1978	1951
Chonburi (Phatthaya)	135.6	10	117.1	22/1991	1980
Chanthaburi	221.2	10	202.5	20/1969	1951
Songkhla (Sa Dao)	73.0	10	52.1	7/2006	1999
Krabi	94.2	10	84.0	15/2000	1994
October					
Lampang	79.2	2	77.3	29/2001	1951
Lampang (Thoen)	65.5	2	64.8	1/2009	2004
Kamphaengphet	112.1	3	86.2	16/1999	1981
Loei	111.4	2	102.5	9/1964	1954
Rayong (Huai Pong Agromet Stn.)	183.9	7	128.0	16/1988	1969
November					
Pichit (Agromet Stn.)	40.0	9	39.2	15/1999	1992
December					
Krabi	83.2	12	45.8	31/1997	1994

Breaking records of monthly rainfall in Thailand

Station	New Record 2011	Previous Record		Start since
	Rainfall (mm.)	Rainfall (mm.)	Year	
March				
Mae Hong Son (Mae Sariang)	156.6	109.0	2001	1956
Lampang (Thoen)	115.4	86.4	2009	2004
Uttaradit	160.7	136.8	2001	1951
Sukhothai	117.1	22.8	2007	2000
Tak (Bhumibol Dam)	242.8	193.8	2001	1960
Tak (Mae Sot)	147.7	79.8	1952	1951
Tak (Doi Mu Soe Agromet Stn.)	193.3	128.3	2001	1992
Kamphaengphet	124.7	123.7	2002	1981
Pichit (Agromet Stn.)	101.3	81.0	1994	1992
Kanchanaburi (Thong Pha Phum)	193.1	154.0	1977	1965
Kanchanaburi	240.6	213.0	1974	1955
Chumphon (Sawi Agromet Stn.)	604.3	470.7	2001	1969
Surat Thani	809.4	251.1	2001	1988
Surat Thani (Agromet Stn.)	1461.5	243.5	2000	1993

Breaking records of monthly rainfall in Thailand (Cont.)

Station	New Record 2011	Previous Record		Start since
	Rainfall (mm.)	Rainfall (mm.)	Year	
<u>March(Cont.)</u>				
Surat Thani (Ko Samui)	1170.1	531.9	2001	1969
Surat Thani (Pra Saeng)	418.5	216.7	2009	1998
Nakhon Si Thammarat (Chawang)	511.1	338.9	1999	1998
Nakhon Si Thammarat	1543.7	340.5	2001	1952
Nakhon Si Thammarat (Agromet Stn.)	1267.5	338.0	1994	1984
Phatthalung (Agromet Stn.)	855.8	439.5	1994	1982
Songkhla	527.1	184.1	1959	1951
Songkhla (Hat Yai)	249.0	214.9	2000	1973
Songkhla (Kho Hong Agromet Stn.)	287.9	213.0	1999	1969
Songkhla (Sa Dao)	151.2	141.5	2003	1999
Pattani	213.1	196.6	1994	1964
Narathiwat	764.6	444.2	1994	1951
Ranong	393.3	274.4	2001	1951
Phang-nga (Takua Pa)	561.3	314.3	2001	1981
Phuket	377.1	212.7	2009	1951
Phuket Airport	547.5	459.0	2001	1951
Krabi	544.4	258.3	2009	1994
Trang	448.7	261.0	1966	1951
Satun	409.1	294.4	2005	1977
<u>July</u>				
Lamphun	253.4	239.3	1995	1980
Lampang (Agromet Stn.)	248.5	221.8	2010	1982
Pichit (Agromet Stn.)	362.8	265.6	2010	1992
Nongkhai	700.8	626.7	1997	1951
Maharakham (Kosumphisai)	375.9	347.9	2009	1966
Nakhon Ratchasima	291.9	263.2	1956	1951
Buriram	356.0	261.2	2007	2003
Bangkok(Don Muang Airport)	350.3	348.9	1998	1951
<u>August</u>				
Buriram	456.6	194.6	2007	2003
Sa Kaew	335.1	321.7	2003	2000
Chonburi	509.5	408.6	1983	1952
Yala (Agromet Stn.)	318.4	297.4	1993	1999

Monthly and Annual Mean Temperature of Thailand 2011

PART	JAN	FEB	MAR	APR	MAY	JUN	JUL	AUG	SEP	OCT	NOV	DEC	ANNUAL
NORTH													
Mean Temperature (°C)	22.5	24.9	25.4	27.7	27.6	27.6	27.4	27.0	27.1	26.5	24.8	22.7	25.9
Departure from normal (°C)	+0.3	+0.5	-2.1	-1.8	-1.0	-0.2	+0.1	+0.1	+0.2	+0.3	+0.6	+1.0	-0.2
NORTHEAST													
Mean Temperature (°C)	21.7	25.7	25.1	28.6	28.6	28.5	28.0	27.4	27.0	26.4	25.9	22.2	26.3
Departure from normal (°C)	-1.5	+0.3	-3.1	-0.9	-0.1	+0.1	+0.1	-0.1	-0.2	+0.0	+1.3	-0.4	-0.3
CENTRAL													
Mean Temperature (°C)	25.2	27.8	26.7	29.1	29.0	28.8	28.3	28.1	27.9	27.8	27.7	25.1	27.6
Departure from normal (°C)	-0.5	+0.3	-2.7	-1.3	-0.6	+0.0	-0.1	+0.1	+0.2	+0.4	+1.4	+0.2	-0.2
EASTERN													
Mean Temperature (°C)	26.4	27.5	26.9	28.4	29.1	28.6	28.4	28.1	27.8	27.7	28.2	26.0	27.8
Departure from normal (°C)	+0.2	+0.0	-1.8	-1.1	+0.0	+0.0	+0.2	+0.1	+0.2	+0.4	+1.4	+0.3	+0.0
SOUTH (EAST COAST)													
Mean Temperature (°C)	26.0	27.1	26.6	28.1	28.6	28.4	27.9	27.8	27.7	27.2	27.2	26.0	27.4
Normal	25.9	26.7	27.7	28.7	28.5	28.1	27.8	27.7	27.3	26.9	26.2	25.6	27.2
Departure from normal (°C)	+0.1	+0.4	-1.1	-0.6	+0.1	+0.3	+0.1	+0.1	+0.4	+0.3	+1.0	+0.4	+0.2
SOUTH (WEST COAST)													
Mean Temperature (°C)	27.0	28.0	27.0	28.3	28.4	28.3	27.6	27.5	27.3	27.2	27.5	27.2	27.6
Departure from normal (°C)	+0.1	+0.3	-1.4	-0.2	+0.4	+0.5	+0.2	+0.2	+0.4	+0.5	+0.9	+0.7	+0.2
OVER COUNTRY													
Mean Temperature (°C)	24.1	26.4	26.0	28.3	28.4	28.3	27.9	27.5	27.4	27.0	26.4	24.2	26.8
Departure from normal (°C)	-0.3	+0.3	-2.1	-1.1	-0.3	+0.1	+0.1	+0.0	+0.2	+0.3	+1.0	+0.3	-0.2

Remark : Based on 1971-2000 normals

Climatological Center, Meteorological Department

Monthly and Annual Mean Maximum Temperature of Thailand in 2011

PART	JAN	FEB	MAR	APR	MAY	JUN	JUL	AUG	SEP	OCT	NOV	DEC	ANNUAL
NORTH													
Mean Maximum Temperature (°C)	30.0	33.6	31.6	34.4	33.4	32.3	32.2	31.6	31.9	31.9	32.0	29.8	32.1
Departure from normal (°C)	-0.8	+0.1	-4.4	-2.5	-1.3	-0.5	+0.2	+0.0	-0.1	+0.2	+1.4	+0.3	-0.6
NORTHEAST													
Mean Maximum Temperature (°C)	28.6	32.8	31.1	34.9	34.0	33.2	32.7	31.8	31.2	30.7	31.6	28.5	31.8
Departure from normal (°C)	-1.7	+0.1	-4.0	-1.0	-0.3	+0.1	+0.2	-0.1	-0.5	-0.4	+1.5	-0.6	-0.5
CENTRAL													
Mean Maximum Temperature (°C)	31.3	34.4	31.6	35.0	34.6	33.4	33.0	32.8	32.5	32.3	33.3	30.9	32.9
Departure from normal (°C)	-1.1	+0.1	-4.4	-1.8	-0.6	-0.3	-0.2	+0.1	+0.0	+0.2	+1.8	-0.1	-0.6
EASTERN													
Mean Maximum Temperature (°C)	32.2	32.5	31.4	33.2	33.5	32.3	32.2	31.9	31.4	32.0	33.4	31.3	32.3
Departure from normal (°C)	+0.3	-0.2	-2.3	-1.2	-0.1	-0.1	+0.2	+0.2	-0.2	+0.2	+1.7	+0.0	-0.1
SOUTH (EAST COAST)													
Mean Maximum Temperature (°C)	30.0	31.4	30.4	32.3	33.8	33.4	32.9	32.8	32.5	31.6	31.4	29.6	31.8
Departure from normal (°C)	-0.2	+0.2	-2.1	-1.3	+0.4	+0.6	+0.3	+0.4	+0.4	+0.4	+1.4	+0.1	+0.0
SOUTH (WEST COAST)													
Mean Maximum Temperature (°C)	31.7	33.1	31.7	33.0	32.5	32.1	31.6	31.6	31.2	31.5	32.1	31.5	32.0
Departure from normal (°C)	-0.9	-0.6	-2.7	-1.1	-0.2	+0.3	+0.1	+0.3	+0.3	+0.3	+0.9	+0.2	-0.2
OVER COUNTRY													
Mean Maximum Temperature (°C)	30.3	33.0	31.3	34.0	33.6	32.7	32.4	32.0	31.8	31.6	32.1	30.0	32.1
Departure from normal (°C)	-0.8	+0.1	-3.5	-1.5	-0.5	-0.1	+0.1	+0.1	+0.0	+0.1	+1.4	+0.0	-0.4

Remark : Based on 1971-2000 normals

Climatological Center, Meteorological Department

Monthly and Annual Mean Minimum Temperature of Thailand 2011

PART	JAN	FEB	MAR	APR	MAY	JUN	JUL	AUG	SEP	OCT	NOV	DEC	ANNUAL
NORTH													
Mean Minimum Temperature (°C)	16.6	17.9	20.6	22.8	24.1	24.5	24.3	24.1	24.1	22.9	19.5	17.1	21.5
Departure from normal (°C)	+1.5	+1.2	+0.5	-0.4	+0.1	+0.4	+0.5	+0.4	+0.7	+0.6	+0.3	+1.6	+0.6
NORTHEAST													
Mean Minimum Temperature (°C)	15.8	19.6	19.8	23.4	24.7	25.1	24.5	24.3	24.3	23.0	20.9	16.9	21.9
Departure from normal (°C)	-0.9	+0.4	-2.4	-0.9	+0.1	+0.4	+0.1	+0.1	+0.5	+0.4	+1.1	+0.3	+0.0
CENTRAL													
Mean Minimum Temperature (°C)	19.8	22.6	22.8	24.7	25.1	25.3	24.7	24.6	24.6	24.2	22.4	19.7	23.4
Departure from normal (°C)	+0.4	+1.0	-0.9	-0.5	-0.2	+0.3	+0.1	+0.1	+0.4	+0.4	+0.6	+0.6	+0.2
EASTERN													
Mean Minimum Temperature (°C)	21.5	23.7	23.6	25.0	25.9	26.0	25.7	25.2	25.3	24.7	23.9	21.7	24.4
Departure from normal (°C)	+0.5	+0.6	-1.1	-0.7	+0.2	+0.5	+0.5	+0.1	+0.7	+0.8	+1.2	+0.8	+0.4
SOUTH (EAST COAST)													
Mean Minimum Temperature (°C)	22.8	23.4	23.7	24.4	25.0	25.1	24.5	24.5	24.5	24.1	23.9	23.2	24.1
Departure from normal (°C)	+0.9	+0.9	+0.3	+0.0	+0.3	+0.6	+0.4	+0.4	+0.6	+0.4	+0.7	+0.9	+0.5
SOUTH (WEST COAST)													
Mean Minimum Temperature (°C)	23.0	23.4	23.8	24.3	24.8	25.2	24.3	24.3	24.1	23.9	24.1	23.9	24.1
Departure from normal (°C)	+0.6	+0.7	+0.4	+0.1	+0.3	+0.7	+0.2	+0.1	+0.3	+0.3	+0.8	+1.1	+0.5
OVER COUNTRY													
Mean Minimum Temperature (°C)	19.0	20.9	21.9	23.9	24.8	25.1	24.6	24.4	24.4	23.6	21.9	19.6	22.8
Departure from normal (°C)	+0.5	+0.7	-0.5	-0.4	+0.1	+0.5	+0.3	+0.2	+0.5	+0.5	+0.8	+1.0	+0.3

Remark : Based on 1971-2000 normals

Climatological Center, Meteorological Department

Breaking record of daily minimum temperature of Thailand in March 2011

Station	New Record 2011		Previous Record		Start Year
	Temperature(°C)	Date	Temperature(°C)	Date / Year	
Lamphang (Thoen)	14.8	17	15.1	2 / 2010	2004
Sukhothai	15.2	18	17.4	6/2009	2000
Buriram	14.3	30	15.8	5/2009	2003
Ayutthaya (Agromet.Stn.)	16.7	17	17.0	7 / 2005	1992
Pathumthanil (Agromet.Stn.)	17.2	17	17.6	6/ 2005	1999
Bangkok (Khlomg Toey)	18.0	17	19.2	6 / 2005	1994
Chonburi (Lam Chabang)	18.5	18	19.0	3 / 1997	1992
				6 / 2005	

Note : Rainfall amount, temperatures and natural disaster are the preliminary information

Climatological Center
 Meteorological Development Bureau
 Thai Meteorological Department